

1. Introduction

1.1 Project Location

Ichingo Chobe River Lodge is a tented lodge located on the southern margins of the Impalila Island across which is the Botswana town of Kasane. The Lodge is built in a riverine forest canopy of the Chobe River on an approximately 5 hectares area of land. The mostly utilized route for travelers to the Impalila Island and consequently to Ichingo Chobe River Lodge is through the B8 route passing the Ngoma border post to Kasane border control (Botswana) and crossing the Chobe River by boat back to the island on the Namibian side. Alternatively, during the drier period of the year, a network of less defined undeveloped private roads could be utilized through the extensive floodplains of the east Zambezi region before eventually crossing the Kasaya channel to the island. Figure 1 below provides clearer appreciation of the area and location of the Ichingo Chobe River Lodge.

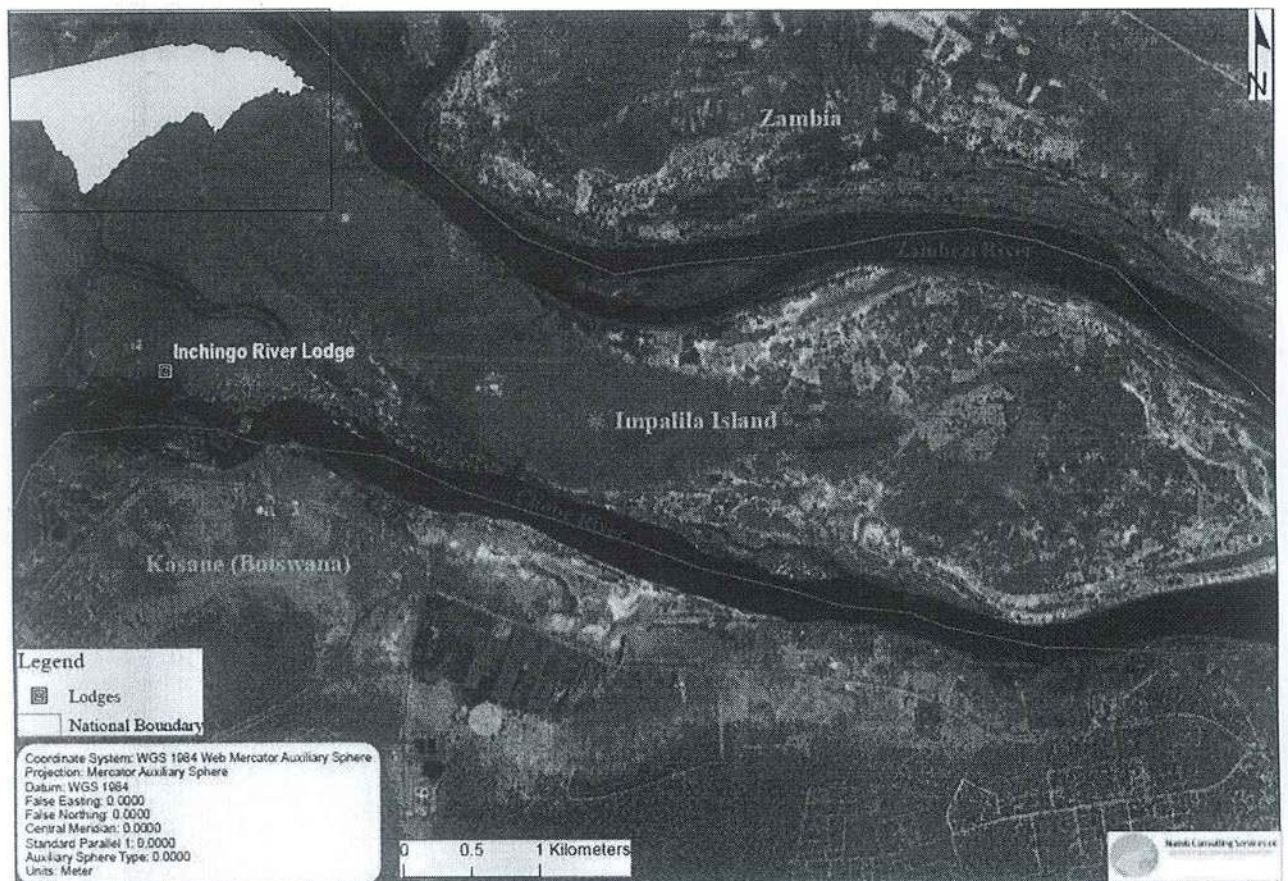


Figure 1 Location of Ichingo Chobe River Lodge on Impalila Island