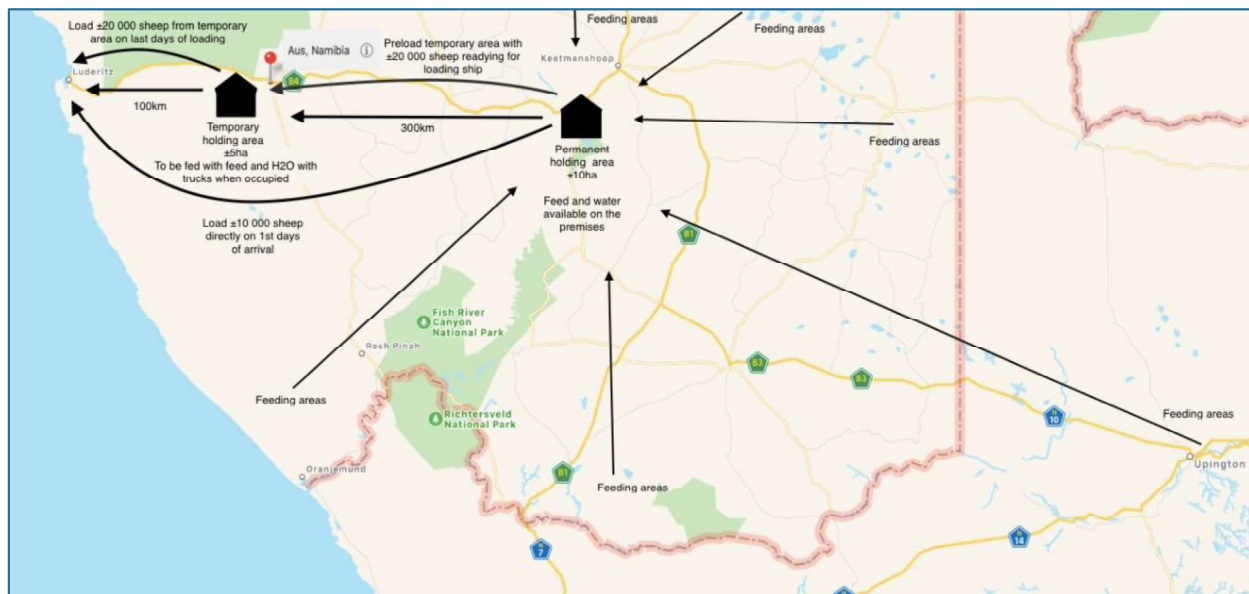


## 2.2. CONSTRUCTION AND OPERATION OF VETERINARY QUARANTINE FACILITIES

### 2.2.1 SITE SELECTION

TradePort Namibia, considers two options with regard to the sites for holding facilities and these are: **Option 1:** TradePort shall lease existing infrastructures such as Meatco / Privately owned Feedlots in Keetmanshoop, and **Option 2:** TradePort shall acquire / lease suitable land (in an appropriately zoned area and preferably in the periphery of a townlands or semi-urban settlements (see **Figure 6 - 8**), and or on privately owned farms along the haulage routes) on which it shall construct its own livestock holding facilities.

As illustrated in **Figure 5**, the operation shall require the use of two feedlot facility along the route (Upington-to-Lüderitz), a permanent and intermediate holding feedlot. Preferably, the facilities for the Lüderitz route will be located at Keetmanshoop and at Aus (both permanent structures), and a temporary structure at the Port of Lüderitz.



**Figure 5:** Illustrate strategic siting of the sheep sources and holding facilities to ensure that the livestock do not travel long distances in one go but are afforded the necessary care, rest and recovery period prior to export by sea

While **Option 1** is the most preferred and recommended scenario, the assessment does take into account the worse-case scenario in which-case **Option 2** is the only practically applicable option.

Hence, in respect to proceeding with **Option 2** the suitable sites were select in accordance to the applicable Town planning Schemes or Integrated Infrastructure Plan, and are Keetmanshoop and Aus for the South Africa-Lüderitz route (see **Table 3** for area coordinates).

Additionally, as TradePort may occasionally require to augment the number of sheep imported from South Africa by sourcing sheep locally (in Namibia), the siting of holding facility's sites also took into account distance to possible stock feeding/sources areas (as illustrated in **Figure 5**).

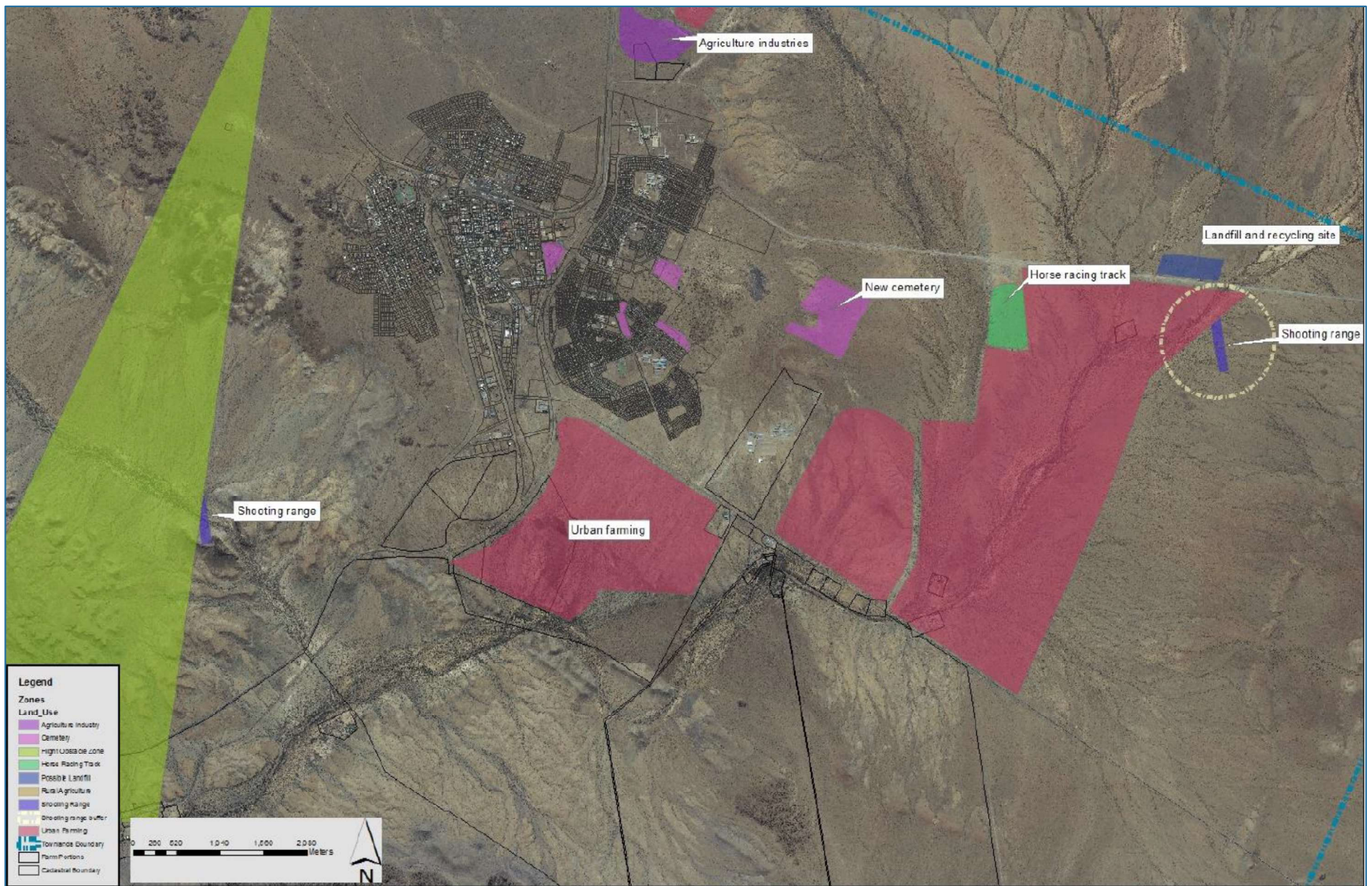
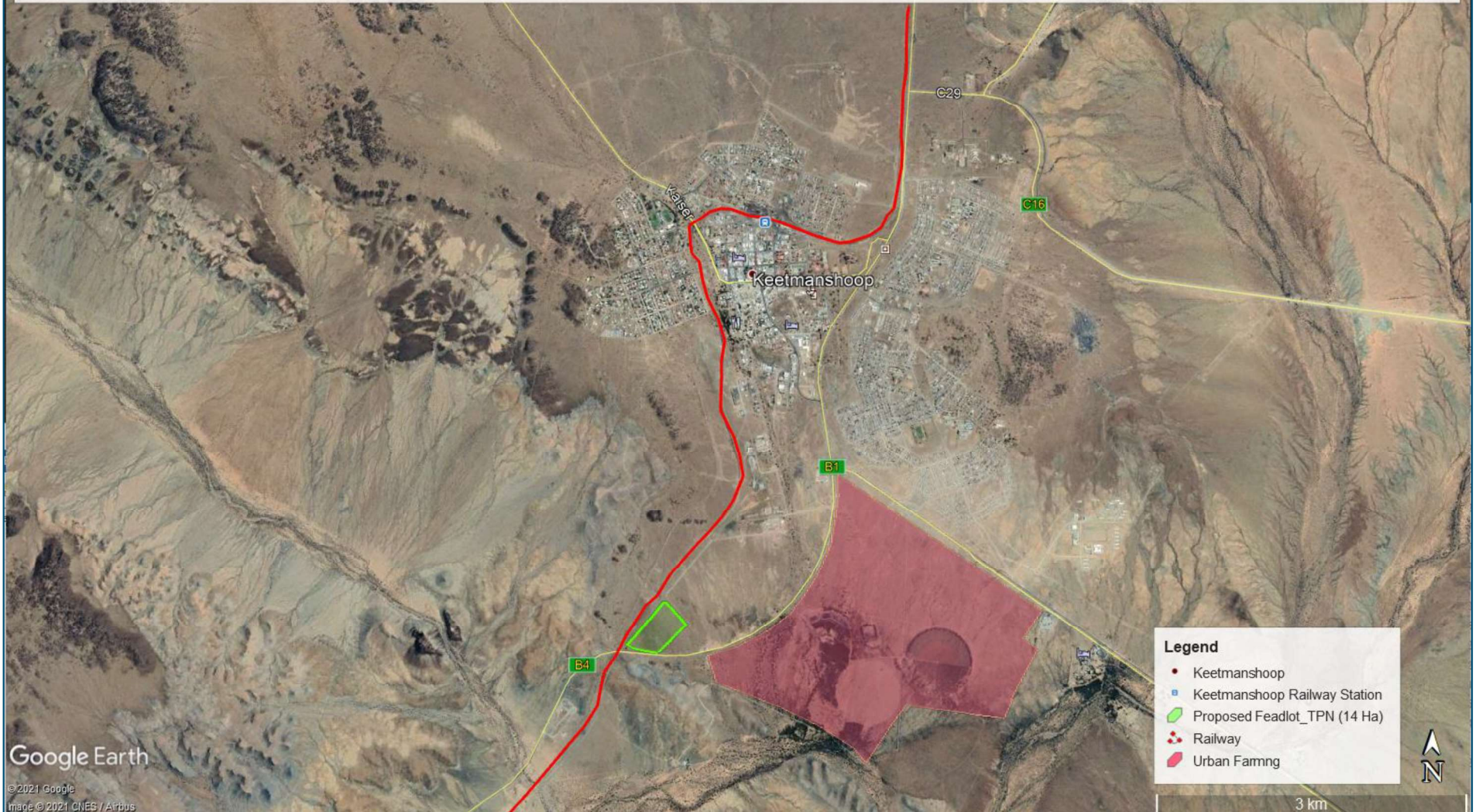


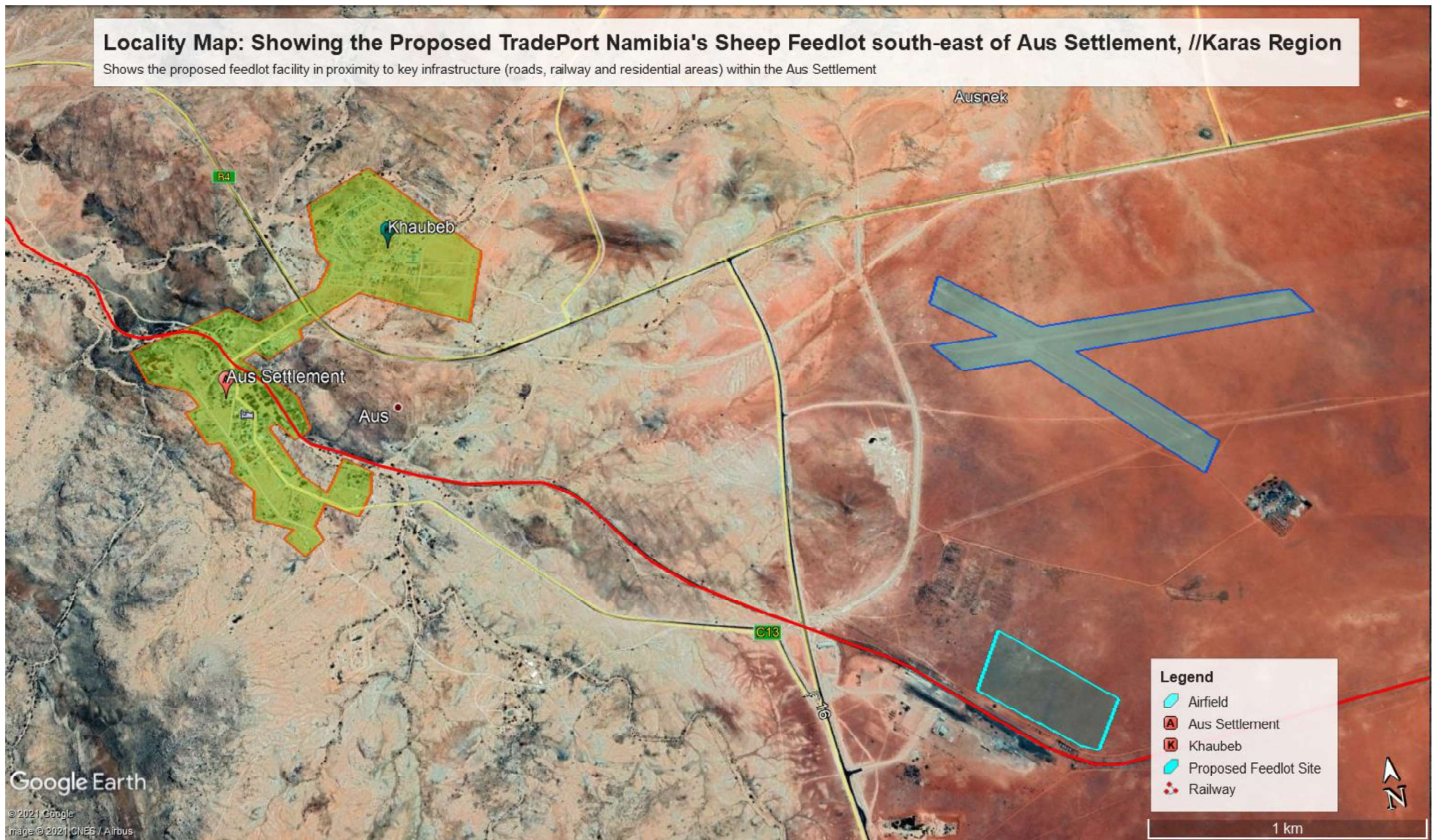
Figure 6: Illustrate strategic siting of the proposed sheep holding facility within the Urban Farming zone of Keetmanshoop Town

### Locality Map: Proposed TradePort Namibia's Sheep Feedlot site, west of the "Urban Farming" zone in Keetmanshoop, //Karas Region

Shows the site of the proposed feedlot in proximity to key infrastructure (main road, railway, residential area and industrial areas) within Keetmanshoop Townlands



**Figure 7:** Illustrate strategic siting of the proposed sheep holding facility in the Urban Farming zone of Keetmanshoop Town



**Figure 8:** Illustrate strategic siting of the proposed sheep holding facility within the Urban Farming zone of Aus Settlement

Both side were selected deliberately within the peripheries of the two towns (corner GPS coordinates presented in **Table 3**), in order to provide sufficient space, close proximity to the needed services including ease of transport and reduce noise nuisance.

**Table 3:** Corner coordinates of the proposed development site

Corner point	Latitude	Longitude
A – Keetmanshoop Point 1	-26.607671°	18.125154°
B – Keetmanshoop Point 2	-26.609697°	18.127273°
C – Keetmanshoop Point 3	-26.612156°	18.124585°
D – Keetmanshoop Point 4	-26.611527°	18.121515°
E – Aus Point 1	-26.678440°	16.288645°
F – Aus Point 2	-26.681330°	16.292364°
G – Aus Point 3	-26.682834°	16.291105°
H – Aus Point 4	-26.680252°	16.287273°
I – Lüderitz Port Area	-26.640786°	15.153682°

The site selection process took into consideration key site selection factors such as land availability, proximity to sensitive receptors, site accessibility, topography, risks, current land use. Most importantly, the sites requires minimum disturbance on the natural environment in terms of land servicing i.e. no vegetation clearing will be required.

#### 2.2.2. CONSTRUCTION DESIGNS AND REQUIREMENTS

The construction activities will take place subsequent to the issuing of an Environmental Clearance Certificate (ECC). The construction activities are expected to extend over a period of between three and six months concurrently for the respective sites (see **Table 4** for technical specifications of the respective Feedlots facilities). These assumes that normal daylight working hours shall be are adhered to in respect to the Labour Act provisions.

**Table 4:** Technical details of the proposed facility as required by the Competent Authority

Component	Description / Dimensions	
	Keetmanshoop and Aus	Lüderitz
Height of Holding facility	1.2 meter	Only for loading
Areas of Holding facility	45 000 sq m	Only for loading
Area occupied by buildings	5 %	Only for loading
Number of Livestock exported Monthly	Sheep	50 000 to 60 000 every 2-3 months
	Cattle	n/a
	Goat	n/a
Power Requirements and source		-
Water Requirements and source	600 000 liters per day	n/a
Feeds Requirements and source	81 000 kg per day	n/a
Height of fencing	1.2 meter	n/a
Type of fencing	Combination of iron piping and woven wire fencing	n/a