

## **BACKGROUND INFORMATION DOCUMENT (BID)**

### **ENVIRONMENTAL IMPACT ASSESSMENT (EIA) STUDY**

**The Proposed Prospecting and Exploration Activities on Two Exclusive Prospecting Licenses (EPLs) No. 8779 & 8780 located northwest of Sesfontein in the Kunene Region, Namibia – An Application for Environmental Clearance Certificate (ECC)**

**ECC Application Number: APP- 01703**

**Proponent: Tamarillo Investments (Pty) Ltd  
P. O. Box 22040 Windhoek, Namibia**

**Prepared by: Serja Hydrogeo-Environmental  
Consultants CC**

**Email: [eias.public@serjaconsultants.com](mailto:eias.public@serjaconsultants.com)**

**Tel No.: +264 (0) 81 749 9223**

**July 2023**

## 1 BACKGROUND

Tamarillo Investments (Pty) Ltd (hereinafter referred to as the *Proponent*) had applied for the rights to prospect and explore on two Exclusive Prospecting Licence (EPL) No. 8779 & 8780 from the Ministry of Mines and Energy (MME) on the 25<sup>th</sup> of February 2022. The letters of the intention to grant the EPLs issued on the 25<sup>th</sup> of August 2022 by MME requires that an Environmental Clearance Certificate (ECC) is obtained first and submitted to the MME for consideration of the EPLs as shown on the Namibia Mines and Energy Portal (“pending ECC”) - Figure 1.

The Proponent intends to prospect and explore for mineral commodities within the boundaries of the EPLs. These commodities are Base & Rare Metals, Dimension Stone, Industrial Minerals, Nuclear Fuel Minerals, Precious Metals, Precious Stones and Semi-Precious Stones. The two EPLs are bordering each other and located about 40km northwest of Sesfontein in the Kunene Region (Figure 2) and overlie the Puros and Sesfontein Conservancies - Figure 3. EPL-8779 and 8780 cover areas of 95,243.9533 and 95,492.8316 hectares (Ha), respectively.

### 1.1 The Need for an EIA Study

Prospecting, exploration, and mining related activities are among listed activities that may not be undertaken without an ECC under the Environmental Management Act (EMA) (2007) and its 2012 Environmental Impact Assessment (EIA) Regulations.

The relevant listed activities as per EIA regulations are:

- *3.1 The construction of facilities for any process or activities which requires a license, right of other forms of authorization, and the renewal of a license, right or other form of authorization, in terms of the Minerals (Prospecting and Mining Act, 1992).*

- *3.2 other forms of mining or extraction of any natural resources whether regulated by law or not.*
- *3.3 Resource extraction, manipulation, conservation, and related activities.*

Subsequently, to comply with the EMA and its Regulations, Tamarillo Investments appointed Serja Hydrogeo-Environmental Consultants CC, Independent Environmental Consultants to apply for the ECC and conduct the required Environmental Impact Assessment (EIA) process.

The EIA process will entail baseline assessment of the biophysical & social environment and public consultation. The findings of the EIA process are then incorporated into an EIA Report and a draft Environmental Management Plan (EMP) will also be developed for the proposed project activities. The ECC application is submitted to and registered with the Ministry of Environment, Forestry and Tourism (MEFT).

Once the ECC is issued by the Environmental Commissioner, the Proponent will submit the ECC to the Mining Commissioner at the Ministry of Mines and Energy for consideration of granting the EPLs. The prospecting and exploration activities will then be planned for and commence thereafter.

### 1.2 The Purpose of this Document

It should be noted that this Background Information Document (BID) is not an EIA Report, but a non-technical summary of the EIA process.

The BID is aimed at sharing first-hand summarized information of the proposed project activities. It also provides public guidance and basis for their participation from the beginning of the EIA process and register as interested and affected parties (I&APs) raise issues with respect to the proposed activities.

The information obtained from the I&APs will then form basis of the EIA Report and EMP to help the Environmental Commissioner make an informed decision on considering the ECC issuance.

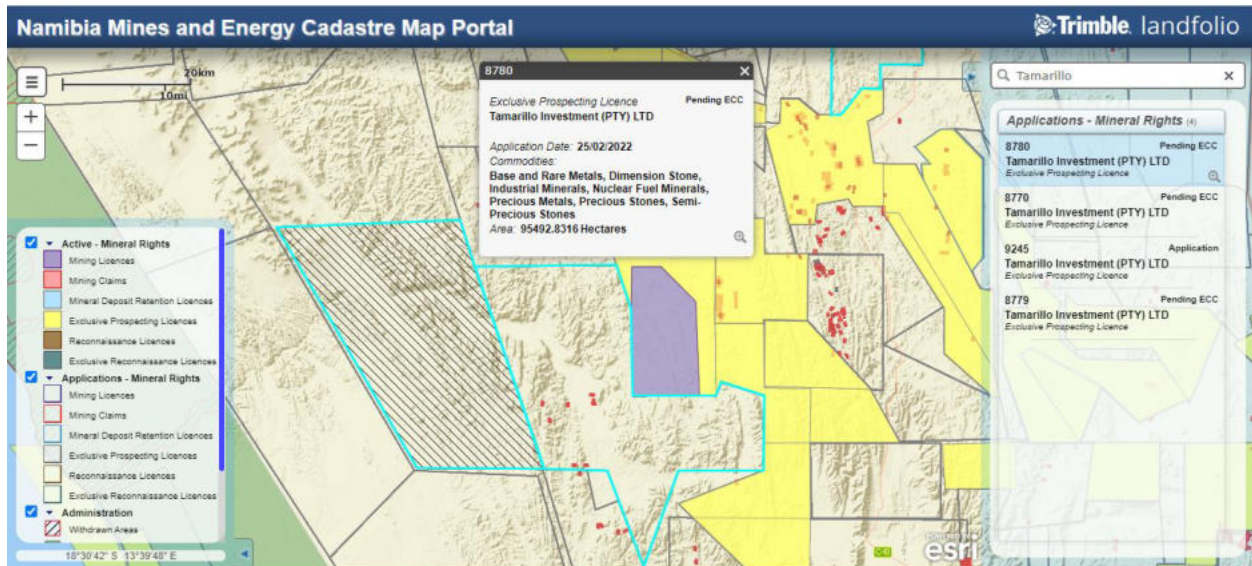
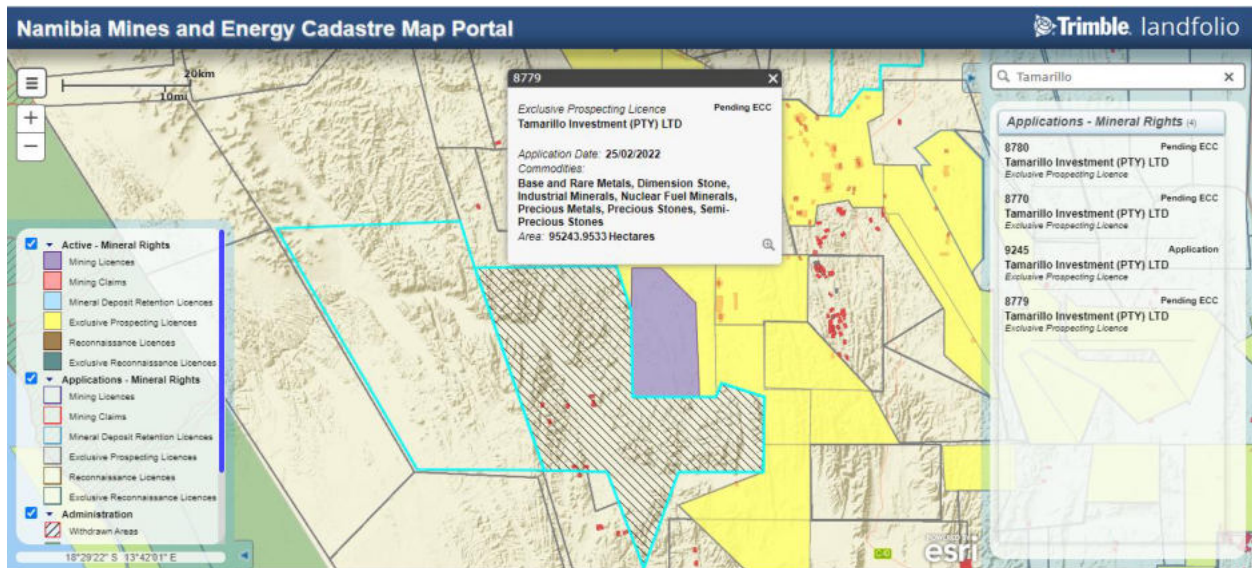


Figure 1: The statuses of EPL-8779 & 8780 on the Namibia Mines and Energy Cadastre <https://maps.landfolio.com/Namibia/>

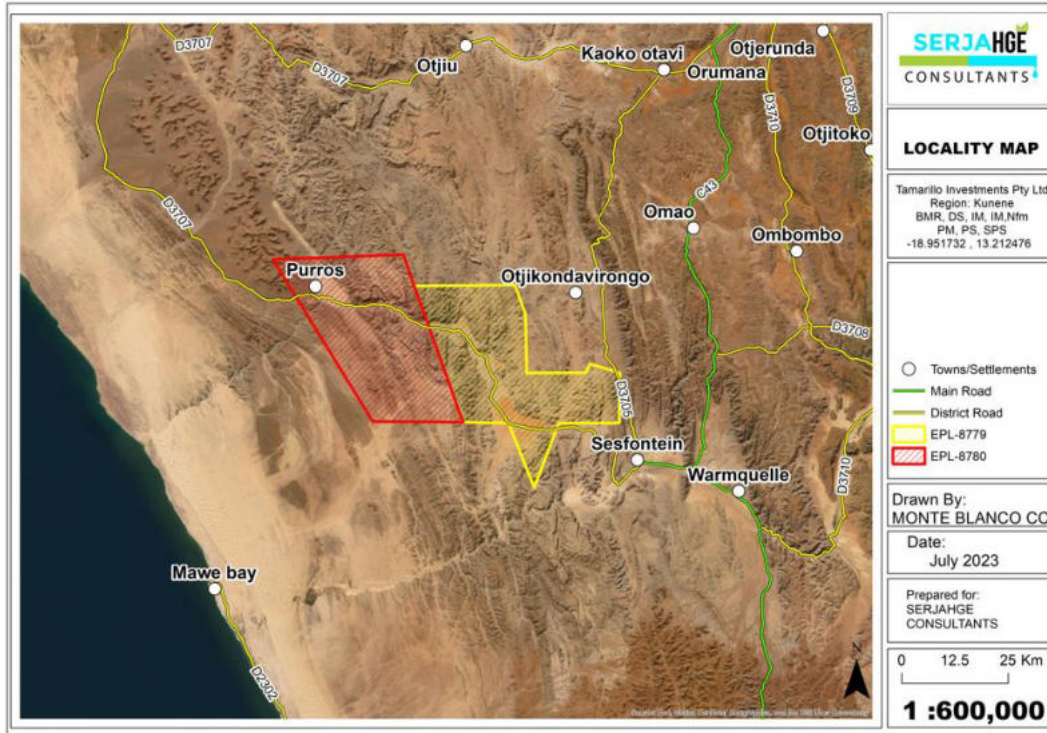


Figure 2: The locality map of EPL-8779 & 8780 northwest of Sesfontein, Kunene Region

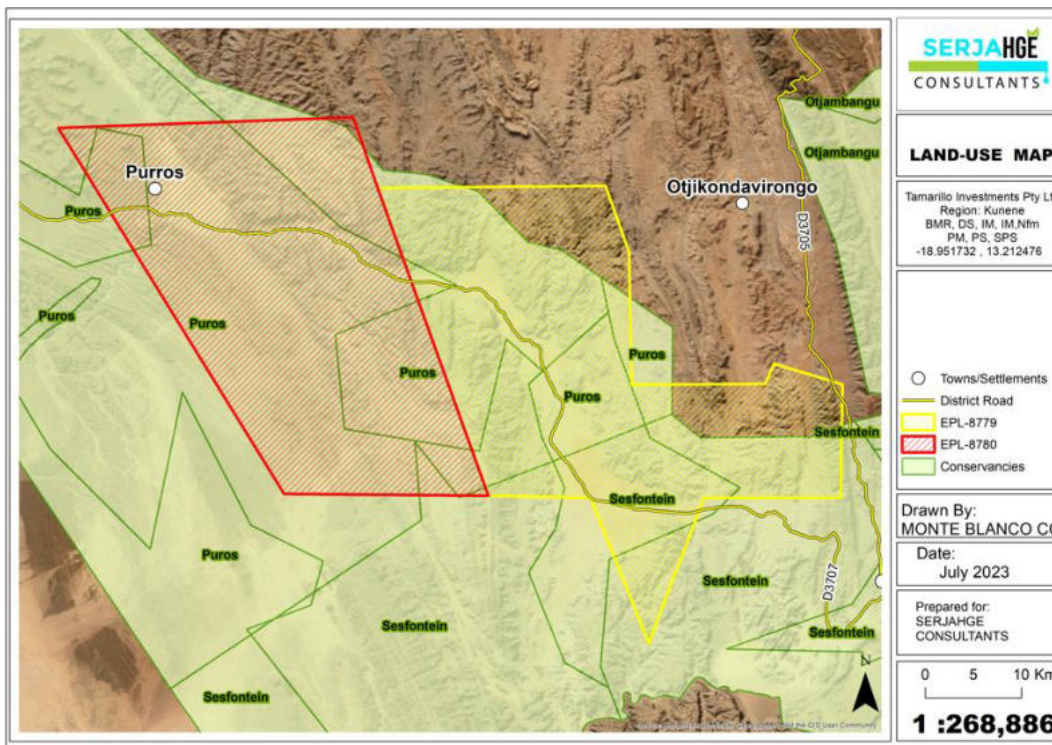


Figure 3: The land use map of EPL-8779 & 8780 in the Kunene Region

## 2 PROJECT DESCRIPTION

### 2.1 Proposed Prospecting and Exploration Methods

Prior to undertaking the proposed activities on the EPLs, the Proponent will be required to sign land use agreements and consent with the land custodians and users (the respective traditional authority and Management Committee of the two Conservancies given that the EPLs fall within a communal land and Conservancy areas, respectively). The anticipated duration of the proposed prospecting and exploration activities is between 6 to 36 months or more, based on the progress of the phased activities.

#### 2.1.1 Base & Rare Metals, Industrial Minerals, Nuclear Fuel Minerals, Precious Metals, Precious Stones and Semi-Precious Stones

The Proponent intends to adopt a systematic prospecting and exploration approach of the following:

- Desktop Study (Non-invasive method): Geological mapping (Non-invasive Technique): The exploration program will commence with a review of geological maps and historical drilling and / or exploration data for the area, if any.
- Geophysical surveys (Non-invasive): This will entail data collection of the substrata. Ground geophysical surveys shall be conducted, where necessary using vehicle-mounted sensors.
- Lithology geochemical surveys (Invasive): Rock and soil sampling from small pits/trenches.
- Detailed Exploration Drilling (Invasive): Should analyses of soil/rock samples by an analytical laboratory be positive, holes are drilled, and drill samples collected for further analysis.

#### 2.1.2 Dimension Stone Exploration

The Proponent intends to adopt a systematic prospecting approach of the following:

- Non-invasive techniques: Geological mapping, reviewing of existing geological maps and historical drilling/quarrying data, Field evaluation.
- Invasive techniques: rock sampling and Down-The-Hole drilling to obtain exploration demonstration blocks. No blasting will be onsite.

### 2.2 Required Resources and Services Infrastructure

The following services and infrastructure as provided below will be required for the project activities:

- Human resources and accommodation: The exploration crew will consist of a minimum of eight people, comprising two skilled, two semi-skilled, four casual workers. However, this number may vary depending on the stages of the activities.
- Accommodation: Exploration (mainly drilling) workers will be housed in tented campsite (temporary accommodation) within the boundaries of the EPLs. However, consents from land custodian (traditional authority) and land users (conservancies) will be obtained prior to setting up accommodation structures.
- Water supply: water will be required for exploration activities such as cooling down and washing of drilling equipment, domestic use (ablution, drinking and cooking). This will be supplied by existing sources with a reliable supply through water purchase agreements.
- Fuel supply: (for personnel use to cook): The Proponent will provide firewood or fuel to be used for food preparation by the site workers. No firewood will be collected onsite neither neighbouring land.

- **Fuel Supply (machinery and equipment):**

Diesel will be used for machinery and equipment and fuel generator. A trailer mounted and banded of about 10,000-litre fuel tank will be onsite to ensure an uninterrupted fuel supply to the project.

- **Accessibility (roads):** the EPLs are accessible from Opuwo/Kaoko-Otavi (northern) side by the D3705 and from the north-western side of EPL-8779 via the D3707 that passes through this EPL. New access tracks will be created to access site specific areas on the EPLs, where required.

- **Waste management:** the different waste will be handled as follows:

**-Sewage:** Two portable ablution facilities with septic tanks will be provided on site and emptied according to manufacturers' instructions.

**-General and domestic waste:** Solid waste bins (containers) will be made available at both exploration sites and campsite. The waste will be disposed of appropriately (at the nearest approved solid waste management facility such as Sesfontein and if necessary, in Opuwo).

**-Hazardous waste:** All vehicles, machinery and fuel consuming equipment will be provided with drip trays to capture potential fuel spills and waste oils. The waste fuel/oils will be carefully stored in a standardized container to be disposed of at an approved hazardous waste management facility in the country.

- **Health and Safety:** Adequate and appropriate Personal Protective Equipment (PPE) will be provided to all project personnel while on and working at site, including site visitors. A minimum of two fully-equipped first aid kits will be readily available onsite.

- **Potential Accidental Fire Outbreaks:** A minimum of two well-serviced fire extinguishers will be readily available in vehicles, at the working sites and campsite. Basic firefighting training will be provided to some project personnel.

### 3 POTENTIAL IMPACTS

#### **Positive:**

-Local socio-economic development through temporary employment creation,

-Payment of land use fees, and if necessary, the payment of rental fees for setting up structures such as campsites in the area.

-Where possible, exploration holes that have good water strike would be donated to the community, after completion of exploration works in such holes.

-Procurement of local goods and services for exploration activities (supporting goods and services).

#### **Preliminary identified potential negative impacts:**

The following potential negative impacts will be assessed in the EIA Report with the management and mitigation measures provided in the Environmental Management Plan (EMP).

-Physical land / soil disturbance resulting in compaction and erosion,

-Disturbance to grazing land for animals

-Impact on local biodiversity (fauna and flora) and habitat disturbance,

-The potential impact of illegal hunting/poaching of wildlife in the area,

-Potential impact on water resources and soils (over-abstraction and pollution),

-Air quality (compromise the surrounding air quality),

-Visual impacts due to unrehabilitated disturbed site areas as result of trenching and drilling activities and dimension stone exploration,

-Potential occupational health and safety risks,

-Noise associated with exploration drilling and movement of heavy trucks to site,

## EPL-8779 & 8780: EIA Study

- Vehicular traffic safety & impact on local roads,
- Environmental pollution (littering), and
- impact on Archaeological and cultural heritage resources.

## 4 THE EIA PROCESS STEPS

The following steps are followed for this EIA Study:

- Step 1: Project initiation - ECC application and registration at the Department of Environmental Affairs and Forestry (DEAF) at MEFT, development of stakeholders list and compilation of Background Information Document (BID).
- Step 2: Baseline assessment - Literature and legal review (desktop study) of applicable data sources.
- Step 3: Ongoing Public Consultation and facilitation (throughout the EIA process)

The EIA notification placed in *New Era* and *Windhoek Observer* on the 17<sup>th</sup> and 24<sup>th</sup> of July 2023.

- Step 4: Information sharing - Circulation of the Background Information Document (BID) to pre-identified I&APs and public who request for EIA registration.
- Step 5: Site visit and assessment combined with a public consultation meeting to be held in the area around the 04<sup>th</sup> and 05<sup>th</sup> August 2023.
- Step 6: Compilation of the EIA Report and Draft Environmental Management Plan (EMP), and Review of Documents.

## Background Information Document (BID)

- Step 7: Final Reporting and Submission of the EIA Report and EMP to the Environmental Commissioner at MEFT for evaluation and consideration of the ECC.
- Stage 8: Follow-Up with MEFT on the status of the evaluation of the submitted EIA documents and decision on the ECC.

Should you wish to send us your inputs, concerns and/or comments to be considered in the Environmental Assessment Report, please send them to us in writing **before or on Friday, 04 August 2023.**

**Contact Person: Ms. Fredrika Shagama**

**Email:** [eias.public@serjaconsultants.com](mailto:eias.public@serjaconsultants.com)  
[fredrika@serjaconsultants.com](mailto:fredrika@serjaconsultants.com)

**Tel. No.:** +264 81 749 9223 (via WhatsApp or SMS for recording purposes)

**Post:** P. O. Box 27318 Windhoek, Namibia