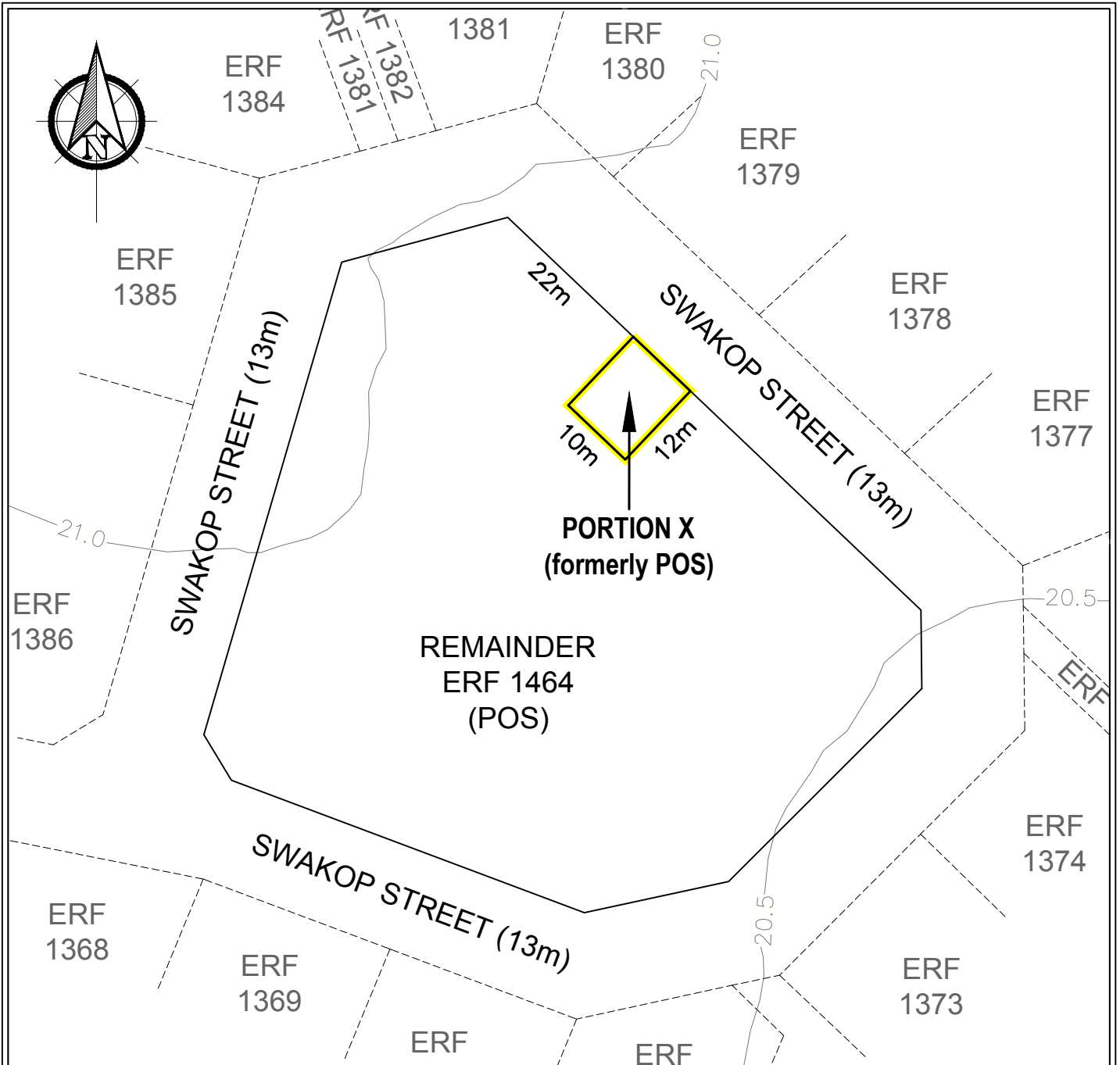




DWG NO:	1464 HB
DATE:	7 JULY 2017
SCALE:	
DRAWN:	H THOMAS

TITLE:
LOCALITY MAP OF ERF 1464, HENTIESBAAI EXT 4





PROPOSED SUBDIVISION:

Subdivision of Erf 1464 Hentiesbaai Extension 4 into Portion X and the Remainder as set out in the schedule below:

SCHEDULE	
ERF NR	SIZE
Portion X	120 m ²
Remainder of Erf 1464	5045 m ²
Total	5165 m ²

NOTES:

Erf 1464 Hentiesbaai Extension 4 is zoned "Public Open Space" in terms of the Henties Bay Zoning Scheme and contains an existing Erongo RED Minisub (MS 1/4 Swakop).

Erongo RED will take transfer of Portion X and build a new substation building to relocate the minisub to the building for improved security and safety.

The Remainder of Erf 1464 Hentiesbaai Ext 4 will remain as "Public Open Space".

Both erven/portions will take access from Swakop Street.

Contour interval: 0.5 metres (flat terrain)

Scale (A4): 1:750

DWG NO:	1464HB/SP
DATE:	29 MAY 2023
SCALE:	1:750 (A4)
DRAWN:	JN OTTO

TITLE: ERONGO RED: RELOCATION OF SWAKOP MINISUB		
Proposed subdivision of Erf 1464 Hentiesbaai Ext 4 into Portion X and the Remainder.		
Version: V1	otto@sp.com.na	064 280 770



STEWART PLANNING
TOWN & REGIONAL PLANNERS