

## Appendix A

| SCIENTIFIC NAME                  | COMMON NAME                   | STATUS                   | OCCURRENCE   |
|----------------------------------|-------------------------------|--------------------------|--------------|
| <i>Eidolon helvum</i>            | STRAW-COLORED FRUIT BAT       | SECURE                   | SEASONAL     |
| <i>Nycteris thebaica</i>         | COMMON SLIT-FACED BAT         | SECURE                   | ABUNDANTLY   |
| <i>Taphozous mauritianus</i>     | TOMB BAT                      | SECURE                   | SEASONAL     |
| <i>Rhinolophus fumigatus</i>     | RÜPPELL'S HORSESHOE BAT       | SECURE                   | OCCASIONALLY |
| <i>Rhinolophus darlingi</i>      | DARLING'S HORSESHOE BAT       | SECURE                   | OCCASIONALLY |
| <i>Rhinolophus denti</i>         | DENT'S HORSESHOE BAT          | SECURE                   | OCCASIONALLY |
| <i>Hipposideros commersoni</i>   | COMMERSON' S LEAF-NOSED BAT   | SECURE                   | ABUNDANTLY   |
| <i>Hipposideros caffer</i>       | SUNDEVALL' S LEAF-NOSED BAT   | SECURE                   | ABUNDANTLY   |
| <i>Chaerephon nigeriae</i>       | NIGERIAN FREE-TAILED BAT      | SECURE                   | ABUNDANTLY   |
| <i>Mops midas</i>                | MIDAS FREE-TAILED BAT         | SECURE                   | ABUNDANTLY   |
| <i>Tadarida aegyptiaca</i>       | EGYPTIAN FREE-TAILED BAT      | SECURE                   | ABUNDANTLY   |
| <i>Miniopterus inflatus</i>      | GREATER LONG-FINGERED BAT     | SECURE                   | RARELY       |
| <i>Miniopterus schreibersi</i>   | SCHREIBERS' LONG-FINGERED BAT | SECURE                   | ABUNDANTLY   |
| <i>Neoromicia capensis</i>       | CAPE SEROTINE BAT             | SECURE                   | ABUNDANTLY   |
| <i>Neoromicia zuluensis</i>      | ALOE SEROTINE BAT             | SECURE                   | RARELY       |
| <i>Nycticeinops schlieffenii</i> | SCHLIEFFEN' S BAT             | SECURE                   | RARELY       |
| <i>Scotophilus dingani</i>       | AFRICAN YELLOW BAT            | SECURE                   | ABUNDANTLY   |
| <i>Atelerix frontalis</i>        | SOUTHERN AFRICAN HEDGEHOG     | UNKNOWN, RARE?           | RARELY       |
| <i>Crociodura fuscomurina</i>    | TINY MUSK SHREW               | SECURE                   | RARELY       |
| <i>Crociodura hirta</i>          | LESSER RED MUSK SHREW         | SECURE                   | ABUNDANTLY   |
| <i>Galago moholi</i>             | SOUTHERN AFRICAN BUSHBABY     | UNKNOWN, RARE?           | ABUNDANTLY   |
| <i>Papio ursinus</i>             | CHACMA BABOON                 | SECURE                   | ABUNDANTLY   |
|                                  |                               |                          |              |
| <i>Lepus victoriae</i>           |                               | SECURE                   | ABUNDANTLY   |
| <i>Xerus inaurus</i>             | CAPE GROUND SQUIRREL          | SECURE                   | ABUNDANTLY   |
| <i>Funisciurus congicus</i>      | STRIPED TREE SQUIRREL         | SECURE                   | RARELY       |
| <i>Saccostomus campestris</i>    | POUCHED MOUSE                 | SECURE                   | ABUNDANTLY   |
| <i>Tatera leucogaster</i>        | BUSHVELD GERBIL               | SECURE                   | ABUNDANTLY   |
| <i>Tatera brantsii</i>           | HIGHVELD GERBIL               | SECURE                   | ABUNDANTLY   |
| <i>Desmodillus auricularis</i>   | SHORT-TAILED GERBIL           | SECURE                   | RARELY       |
| <i>Gerbillurus paeaba</i>        | PYGMY GERBIL                  | SECURE                   | ABUNDANTLY   |
| <i>Steatomys pratensis</i>       | FAT MOUSE                     | SECURE                   | ABUNDANTLY   |
| <i>Malacothrix typica</i>        | LARGE-EARED MOUSE             | SECURE                   | RARELY       |
| <i>Mus indutus</i>               | KALAHARI PYGMY MOUSE          | SECURE                   | ABUNDANTLY   |
| <i>Lemniscomys rosalia</i>       | SINGLE-STRIPED MOUSE          | SECURE                   | RARELY       |
| <i>Rhabdomys pumilio</i>         | STRIPED MOUSE                 | SECURE                   | ABUNDANTLY   |
| <i>Thallomys paedulcus</i>       | TREE RAT                      | SECURE                   | ABUNDANTLY   |
| <i>Thallomys nigricauda</i>      | BLACK-TAILED TREE RAT         | SECURE                   | ABUNDANTLY   |
| <i>Aethomys namaquensis</i>      | NAMAQUA ROCK RAT              | SECURE                   | RARELY       |
| <i>Aethomys chrysophilus</i>     | RED VELD RAT                  | SECURE                   | ABUNDANTLY   |
| <i>Zelotomys woosnami</i>        | WOOSNAM'S DESERT RAT          | RARE                     | RARELY       |
| <i>Mastomys natalensis</i>       | NATAL MULTIMAMMATE MOUSE      | SECURE                   | ABUNDANTLY   |
| <i>Mastomys coucha</i>           | MULTIMAMMATE MOUSE            | SECURE                   | ABUNDANTLY   |
| <i>Graphiurus murinus</i>        | WOODLAND DORMOUSE             | SECURE                   | ABUNDANTLY   |
| <i>Pedetes capensis</i>          | SPRINGHARE                    | SECURE                   | ABUNDANTLY   |
| <i>Hystrix africae australis</i> | SOUTHERN AFRICAN PORCUPINE    | SECURE                   | ABUNDANTLY   |
| <i>Cryptomys damarensis</i>      | DAMARA MOLE RAT               | SECURE                   | ABUNDANTLY   |
| <i>Felis lybica</i>              | AFRICAN WILD CAT              | ENDANGERED & SUPERFICIAL | RARELY       |

|                                 |                        |   |              |
|---------------------------------|------------------------|---|--------------|
| <i>Felis nigripes</i>           | SMALL - SPOTTED CAT    | INDETERMINATE;<br>PERIPHERAL;<br>RARE?                  | RARELY       |
| <i>Leptailurus serval</i>       | SERVAL                 | AMBIGUOUS &<br>SUPERFICIAL                              | RARELY       |
| <i>Caracal caracal</i>          | CARACAL                | SECURE  | ABUNDANTLY   |
| <i>Panthera pardus</i>          | LEOPARD                | SECURE? &<br>SUPERFICIAL                                | RARELY       |
| <i>Panthera leo</i>             | LION                   | AMBIGUOUS(END<br>ANGERED) &<br>SUPERFICIAL              | EXTINCT      |
| <i>Acinonyx jubatus</i>         | CHEETAH                | INADEQUATELY<br>KNOWN<br>(ENDANGERED?)<br>& SUPERFICIAL | ABUNDANTLY   |
| <i>Civettictis civetta</i>      | CIVET                  | AMBIGUOUS,<br>RARE? &<br>SUPERFICIAL                    | RARELY       |
| <i>Genetta maculata</i>         | SMALL-SPOTTED GENET    | SECURE – SP<br>(taxonomy)                               | ABUNDANTLY   |
| <i>Galarella sanguinea</i>      | SLENDER MONGOOSE       | SECURE  | ABUNDANTLY   |
| <i>Helogale parvula</i>         | DWARF MONGOOSE         | SECURE  | ABUNDANTLY   |
| <i>Mungos mungo</i>             | BANDED MONGOOSE        | SECURE  | ABUNDANTLY   |
| <i>Cynictis penicillata</i>     | YELLOW MONGOOSE        | SECURE  | ABUNDANTLY   |
| <i>Crocuta crocuta</i>          | SPOTTED HYAENA         | SECURE? &<br>SUPERFICIAL                                | EXTINCT      |
| <i>Parahyaena brunnea</i>       | BROWN HYAENA           | INADEQUATELY<br>KNOWN<br>(ENDANGERED?)<br>& SUPERFICIAL | OCCASIONALLY |
| <i>Proteles cristatus</i>       | AARDWOLF               | INADEQUATELY<br>KNOWN<br>(ENDANGERED?)<br>& SUPERFICIAL | ABUNDANTLY   |
| <i>Canis mesomelas</i>          | BLACK-BACKED JACKAL    | SECURE  | ABUNDANTLY   |
| <i>Lycaon pictus</i>            | WILD DOG               | ENDANGERED &<br>SUPERFICIAL                             | EXTINCT      |
| <i>Otocyon megalotis</i>        | BAT-EARED FOX          | ENDANGERED? &<br>SUPERFICIAL- SP<br>(taxonomy)          | RARELY       |
| <i>Vulpes chama</i>             | CAPE FOX               | ENDANGERED?   | RARELY       |
| <i>Ictonyx striatus</i>         | STRIPED POLECAT        | SECURE  | ABUNDANTLY   |
| <i>Mellivora capensis</i>       | HONEY BADGER           | SECURE  | RARELY       |
| <i>Poecilogale albinucha</i>    | AFRICAN STRIPED WEASEL | AMBIGUOUS(RAR<br>E?)                                    | RARELY       |
| <i>Manis temminckii</i>         | SAVANNA PANGOLIN       | ENDANGERED &<br>SUPERFICIAL                             | RARELY       |
| <i>Phacochoerus africanus</i>   | SOUTHERN WARTHOG       | SECURE  | ABUNDANTLY   |
| <i>Giraffa camelopardalis</i>   | GIRAFFE                | ENDANGERED? &<br>SUPERFICIAL                            | EXTINCT      |
| <i>Alcelaphus buselaphus</i>    | RED HARTEBEEST         | SECURE ?  | ABUNDANTLY   |
| <i>Antidorcas marsupialis</i>   | SPRINGBOK              | SECURE  |              |
| <i>Connochaetes taurinus</i>    | BLUE WILDEBEEST        | INADEQUATELY<br>KNOWN<br>(ENDANGERED?)<br>& SUPERFICIAL | ABUNDANTLY   |
| <i>Hippotragus equinus</i>      | ROAN                   | ENDANGERED &<br>SUPERFICIAL                             | ABUNDANTLY   |
| <i>Madoqua damarensis</i>       | DAMARA DIK-DIK         | INADEQUATELY<br>KNOWN                                   | RARELY       |
| <i>Oryx gazella</i>             | GEMSBOK                | SECURE  | ABUNDANTLY   |
| <i>Raphicerus campestris</i>    | STEENBOK               | SECURE  | ABUNDANTLY   |
| <i>Sylvicapra grimmia</i>       | COMMON DUIKER          | SECURE  | ABUNDANTLY   |
| <i>Syncerus caffer</i>          | BUFFALO                | INSUFFICIENTLY<br>KNOWN &<br>SUPERFICIAL                | ABUNDANTLY   |
| <i>Tragelaphus oryx</i>         | ELAND                  | INADEQUATELY<br>KNOWN &<br>SUPERFICIAL                  | ABUNDANTLY   |
| <i>Tragelaphus strepsiceros</i> | GREATER KUDU           | SECURE  | ABUNDANTLY   |
|                                 |                        |   |              |

|                            |                  |  |            |
|----------------------------|------------------|--|------------|
| <i>Equus burchelli</i>     | PLAINS ZEBRA     | INADEQUATELY KNOWN & SUPERFICIAL               | EXTINCT    |
| <i>Ceratotherium simum</i> | WHITE RHINOCEROS | EXTINCT & REINTRODUCED (non topotypical stock) | EXTINCT    |
| <i>Diceros bicornis</i>    | BLACK RHINOCEROS | ENDANGERED & SUPERFICIAL                       | EXTINCT    |
| <i>Loxodonta africana</i>  | AFRICAN ELEPHANT | ENDANGERED & SUPERFICIAL                       | EXTINCT    |
| <i>Orycteropus afer</i>    | AARDVARK         | SECURE ?                                       | ABUNDANTLY |
| <i>Elephantulus intufi</i> | BUSHVELD SENGI   | ENDEMIC AND SECURE                             | ABUNDANTLY |

Reptile species which are likely to occur within the exploration area:

| SCIENTIFIC NAME                   | COMMON NAME                        | STATUS                   | OCCURRENCE |
|-----------------------------------|------------------------------------|--------------------------|------------|
| <i>Pelomedusa subrufa</i>         | HELMETED TERRAPIN                  | SECURE                   | ABUNDANTLY |
| <i>Geochelone pardalis</i>        | LEOPARD TORTOISE                   | ENDANGERED & SUPERFICIAL | ABUNDANTLY |
| <i>Psammobates oculiferus</i>     | KALAHARI TORTOISE                  | ENDANGERED               | ABUNDANTLY |
| <i>Lygodactylus bradfieldi</i>    | NAMIBIAN DWARF GECKO               | ENDEMIC & SECURE         | ABUNDANTLY |
| <i>Colopus wahlbergii</i>         | KALAHARI GROUND GECKO              | SECURE                   | RARELY     |
| <i>Pachydactylus turneri</i>      | TROPICAL BUTTON-SCALE GECKO        | SECURE                   | ABUNDANTLY |
| <i>Pachydactylus capensis</i>     | CAPE GECKO                         | SECURE                   | UNCOMMONLY |
| <i>Pachydactylus punctatus</i>    | SPECKLED GECKO                     | SECURE                   | ABUNDANTLY |
| <i>Ptenopus garrulus</i>          | COMMON BARKING GECKO               | SECURE                   | ABUNDANTLY |
| <i>Agama aculeata</i>             | COMMON GROUND AGAMA                | SECURE                   | ABUNDANTLY |
| <i>Chamaeleo dilepis</i>          | FLAP-NECK CHAMELEON                | SECURE                   | ABUNDANTLY |
| <i>Acontias occidentalis</i>      | WESTERN LEGLESS SKINK              | SECURE                   | ABUNDANTLY |
| <i>Lygosoma sundevalli</i>        | COMMON WRITHING SKINK              | SECURE                   | ABUNDANTLY |
| <i>Trachylepis capensis</i>       | CAPE SKINK                         | SECURE                   | UNCOMMONLY |
| <i>Trachylepis punctulata</i>     | EASTERN VARIEGATED SKINK           | SECURE                   | ABUNDANTLY |
| <i>Trachylepis wahlbergii</i>     | WAHLBERG'S STRIPED SKINK           | SECURE                   | ABUNDANTLY |
| <i>Trachylepis varia</i>          | COMMON VARIABLE SKINK              | SECURE                   | ABUNDANTLY |
| <i>Heliobolis lugubris</i>        | BUSHVELD LIZARD                    | SECURE                   | ABUNDANTLY |
| <i>Ichnotropis capensis</i>       | CAPE ROUGH-SCALED LIZARD           | SECURE                   | ABUNDANTLY |
| <i>Ichnotropis squamulosa</i>     | COMMON ROUGH-SCALED LIZARD         | SECURE                   | ABUNDANTLY |
| <i>Nucras holubi</i>              | HOLUB'S SANDVELD LIZARD            | SECURE                   | UNCOMMONLY |
| <i>Nucras intertexta</i>          | SPOTTED SANDVELD LIZARD            | SECURE                   | UNCOMMONLY |
| <i>Pedioplanis lineocellata</i>   | OCELLATED SAND LIZARD              | SECURE                   | ABUNDANTLY |
| <i>Pedioplanis namaquensis</i>    | NAMAQUA SAND LIZARD                | SECURE                   | ABUNDANTLY |
| <i>Gerrhosaurus auritus</i>       | KALAHARI PLATED LIZARD             | SECURE                   | UNCOMMONLY |
| <i>Gerrhosaurus nigrolineatus</i> | BLACK-LINED PLATED LIZARD          | SECURE                   | ABUNDANTLY |
| <i>Varanus albigularis</i>        | VELD LEGUAAN (MONITOR)             | ENDANGERED & SUPERFICIAL | ABUNDANTLY |
| <i>Dalophia pistillum</i>         | BLUNT-TAILED WORM LIZARD           | SECURE ?                 | MARGINALLY |
| <i>Monopeltis anchietae</i>       | ANGOLAN SPADE-SNOUTED WORM LIZARD  | SECURE                   | ABUNDANTLY |
| <i>Monopeltis infuscata</i>       | DUSKY SPADE-SNOUTED WORM LIZARD    | SECURE                   | ABUNDANTLY |
| <i>Monopeltis leonhardi</i>       | KALAHARI SPADE-SNOUTED WORM LIZARD | SECURE                   | MARGINALLY |
| <i>Monopeltis mauricei</i>        | SLENDER SPADE-SNOUTED WORM LIZARD  | SECURE                   | MARGINALLY |
| <i>Zygaspis quadrifrons</i>       | KALAHARI ROUND-HEADED WORM LIZARD  | SECURE                   | ABUNDANTLY |
| <i>Leptotyphlops labialis</i>     | DAMARA WORM SNAKE                  | ENDEMIC & SECURE         | MARGINALLY |
| <i>Leptotyphlops scutifrons</i>   | PETERS= WORM SNAKE                 | SECURE                   | ABUNDANTLY |
| <i>Rhinotyphlops schlegelii</i>   | SCHLEGEL'S BLIND SNAKE             | SECURE                   | ABUNDANTLY |
| <i>Rhinotyphlops boylei</i>       | KALAHARI BLIND SNAKE               | SECURE                   | RARELY     |

|                                     |                                    |                                     |            |
|-------------------------------------|------------------------------------|-------------------------------------|------------|
| <i>Python natalensis</i>            | SOUTHERN AFRICAN PYTHON            | <b>ENDANGERED &amp; SUPERFICIAL</b> | ABUNDANTLY |
| <i>Amblyodipsas polylepis</i>       | COMMON PURPLE-GLOSED SNAKE         | <b>INADEQUETLY KNOWN; RARE?</b>     | RARELY     |
| <i>Amblyodipsas ventrimaculata</i>  | KALAHARI PURPLE-GLOSED SNAKE       | <b>SECURE</b>                       | MARGINALLY |
| <i>Aparallactus capensis</i>        | CAPE CENTIPEDE EATER               | <b>INADEQUETLY KNOWN ; RARE?</b>    | RARELY     |
| <i>Atractaspis bibronii</i>         | SOUTHERN STILLETTO SNAKE           | <b>SECURE</b>                       | ABUNDANTLY |
| <i>Xenocalamus bicolor</i>          | VARIABLE QUILL-SNOURED SNAKE       | <b>SECURE</b>                       | ABUNDANTLY |
| <i>Xenocalamus mechowii</i>         | ELONGATED QUILL-SNOURED SNAKE      | <b>SECURE</b>                       | MARGINALLY |
| <i>Crotaphopeltis hotamboeia</i>    | WHITE-LIPPED SNAKE                 | <b>INADEQUETLY KNOWN</b>            | RARELY     |
| <i>Dasypeltis scabra</i>            | RHOMBIC EGG EATER                  | <b>SECURE</b>                       | ABUNDANTLY |
| <i>Dispholidus typus</i>            | BOOMSLANG                          | <b>SECURE</b>                       | ABUNDANTLY |
| <i>Lamprophis fuliginosus</i>       | BROWN HOUSE SNAKE                  | <b>SECURE</b>                       | ABUNDANTLY |
| <i>Lycophidion capense</i>          | CAPE WOLF SNAKE                    | <b>SECURE</b>                       | ABUNDANTLY |
| <i>Mehelya capensis</i>             | CAPE FILE SNAKE                    | <b>SECURE</b>                       | UNCOMMONLY |
| <i>Mehelya nyassae</i>              | BLACK FILE SNAKE                   | <b>INADEQUETLY KNOWN</b>            | RARELY     |
| <i>Mehelya vernayi</i>              | ANGOLAN FILE SNAKE                 | <b>INADEQUETLY KNOWN</b>            | UNCOMMONLY |
| <i>Philothamnus angolensis</i>      | ANGOLAN GREEN SNAKE                | <b>SECURE</b>                       | UNCOMMONLY |
| <i>Philothamnus semivariiegatus</i> | SPOTTED BUSH SNAKE                 | <b>SECURE</b>                       | ABUNDANTLY |
| <i>Prosymna angolensis</i>          | ANGOLA SHOVEL-SNOUT                | <b>SECURE</b>                       | MARGINALLY |
| <i>Prosymna bivittata</i>           | TWIN-STRIPED SHOVELSNOUT           | <b>SECURE</b>                       | MARGINALLY |
| <i>Psammophis angolensis</i>        | DWARF WHIP SNAKE                   | <b>SECURE</b>                       | ABUNDANTLY |
| <i>Psammophis jallae</i>            | JALLA'S SAND SNAKE                 | <b>INADEQUETLY KNOWN</b>            | RARELY     |
| <i>Psammophis leopardinus</i>       | LEOPARD WHIP SNAKE                 | <b>ENDEMIC &amp; SECURE</b>         | UNCOMMONLY |
| <i>Psammophis mossambicus</i>       | OLIVE WHIP SNAKE                   | <b>SECURE</b>                       | ABUNDANTLY |
| <i>Psammophis notostictus</i>       | KAROO WHIP SNAKE                   | <b>SECURE</b>                       | MARGINALLY |
| <i>Psammophis subtaeniatus</i>      | WESTERN STRIPED-BELLIED SAND SNAKE | <b>SECURE</b>                       | ABUNDANTLY |
| <i>Psammophis trigrammus</i>        | WESTERN WHIP SNAKE                 | <b>ENDEMIC &amp; SECURE</b>         | ABUNDANTLY |
| <i>Psammophis trinassalis</i>       | KALAHARI SAND SNAKE                | <b>SECURE</b>                       | UNCOMMONLY |
| <i>Psammophylax tritaeniatus</i>    | STRIPED SKAAPSTEKER                | <b>SECURE</b>                       | ABUNDANTLY |
| <i>Pseudaspis cana</i>              | MOLE SNAKE                         | <b>SECURE</b>                       | ABUNDANTLY |
| <i>Telescopus semiannulatus</i>     | SOUTHERN TIGER SNAKE               | <b>SECURE</b>                       | ABUNDANTLY |
| <i>Thelotornis capensis</i>         | VINE SNAKE                         | <b>SECURE</b>                       | UNCOMMONLY |
| <i>Aspidelaps lubricus</i>          | CORAL SNAKE                        | <b>SECURE</b>                       | UNCOMMONLY |
| <i>Aspidelaps scutatus</i>          | SHIELD-NOSE SNAKE                  | <b>SECURE</b>                       | ABUNDANTLY |
| <i>Dendroaspis polylepis</i>        | BLACK MAMBA                        | <b>SECURE</b>                       | ABUNDANTLY |
| <i>Elapsoidea semiannulata</i>      | ANGOLA GARTER SNAKE                | <b>SECURE</b>                       | UNCOMMONLY |
| <i>Elapsoidea sundevallii</i>       | KALAHARI GARTER SNAKE              | <b>SECURE</b>                       | UNCOMMONLY |
| <i>Naja anchietae</i>               | ANGOLAN COBRA                      | <b>SECURE</b>                       | ABUNDANTLY |
| <i>Naja mossambica</i>              | MOZAMBIQUE SPITTING COBRA          | <b>SECURE</b>                       | RARELY     |
| <i>Naja nigricincta</i>             | ZEBRA SNAKE                        | <b>ENDEMIC &amp; SECURE</b>         | ABUNDANTLY |
| <i>Bitis caudalis</i>               | HORNED ADDER                       | <b>SECURE</b>                       | UNCOMMONLY |
| <i>Bitis arietans</i>               | PUFF ADDER                         | <b>SECURE</b>                       | ABUNDANTLY |

Bird species which are likely to occur within the project area:

| SCIENTIFIC NAME                | COMMON NAME           | STATUS IN NAMIBIA |
|--------------------------------|-----------------------|-------------------|
| <i>Accipiter badius</i>        | Little Banded Goshawk | Secure            |
| <i>Accipiter ovampensis</i>    | Ovambo Sparrowhawk    | Secure            |
| <i>Actophilornis africanus</i> | African Jacana        | Secure            |
| <i>Agapornis roseicollis</i>   | Rosy faced Lovebird   | Secure            |
| <i>Anastomus lamelligerus</i>  | Openbilled Stork      | Secure            |
| <i>Anthus cinnamomeus</i>      | Richard's Pipit       | Secure            |
| <i>Apus affinis</i>            | Little Swift          | Secure            |
| <i>Apus apus</i>               | European Swift        | Secure            |

|                                 |                           |                        |
|---------------------------------|---------------------------|------------------------|
| <i>Apus caffer</i>              | Whiterumped Swift         | Secure                 |
| <i>Apus melba</i>               | Alpine Swift              | Secure                 |
| <i>Aquila nipalensis</i>        | Steppe Eagle              | Secure -               |
| <i>Aquila rapax</i>             | Tawny Eagle               | <b>Endangered</b>      |
| <i>Aquila wahlbergi</i>         | Wahlberg's Eagle          | Secure                 |
| <i>Ardeotis kori</i>            | Kori Bustard              | Secure                 |
| <i>Batis molitor</i>            | Chinspot Batis            | Secure                 |
| <i>Batis pririt</i>             | Pirit Batis               | Secure                 |
| <i>Bubalornis niger</i>         | Redbilled Buffalo Weaver  | Secure                 |
| <i>Burhinus capensis</i>        | Spotted Dikkop            | Secure                 |
| <i>Buteo buteo</i>              | Steppe Buzzard            | Secure -               |
| <i>Calamonastes fasciolatus</i> | Barred Warbler            | Secure                 |
| <i>Calendulauda sabota</i>      | Sabota Lark               | Secure                 |
| <i>Camaptera brevicaudata</i>   | Greybacked Camaptera      | Secure                 |
| <i>Caprimulgus pectoralis</i>   | Fierynecked Nightjar      | Secure                 |
| <i>Caprimulgus rufigena</i>     | Rufouscheeked Nightjar    | Secure                 |
| <i>Ceryle rudis</i>             | Pied Kingfisher           | Secure                 |
| <i>Chrysococcyx caprius</i>     | Diederik Cuckoo           | Secure                 |
| <i>Chrysococcyx klaas</i>       | Klaas's Cuckoo            | Secure                 |
| <i>Ciconia abdimii</i>          | Abdim's Stork             | Secure                 |
| <i>Cinnyris mariquensis</i>     | Marico Sunbird            | Secure                 |
| <i>Circaetus pectoralis</i>     | Blackbreasted Snake Eagle | Secure                 |
| <i>Cisticola chiniana</i>       | Rattling Cisticola        | Secure                 |
| <i>Cisticola rufilatus</i>      | Tinkling Cisticola        | Secure                 |
| <i>Clamator glandarius</i>      | Great Spotted Cuckoo      | Secure                 |
| <i>Coracias caudata</i>         | Lilacbreasted Roller      | Secure                 |
| <i>Coracias garrulus</i>        | European Roller           | Secure -               |
| <i>Coracias naevia</i>          | Purple Roller             | Secure                 |
| <i>Corvinella melanoleuca</i>   | Longtailed Shrike         | Secure                 |
| <i>Corvus capensis</i>          | Black Crow                | Secure                 |
| <i>Corythaixoides concolor</i>  | Grey Lourie               | Secure                 |
| <i>Creatophora cinerea</i>      | Wattled Starling          | Secure                 |
| <i>Crithagra flaviventris</i>   | Yellow Canary             | Secure                 |
| <i>Cuculus clamosus</i>         | Black Cuckoo              | Secure                 |
| <i>Cuculus gularis</i>          | African Cuckoo            | Secure                 |
| <i>Cursorius temminckii</i>     | Temminck's Courser        | Secure                 |
| <i>Cypsiurus parvus</i>         | Palm Swift                | Secure                 |
| <i>Delichon urbicum</i>         | House Martin              | Secure -               |
| <i>Dicrurus adsimilis</i>       | Forktailed Drongo         | Secure                 |
| <i>Elanus caeruleus</i>         | Blackshouldered Kite      | Secure                 |
| <i>Emberiza flaviventris</i>    | Goldenbreasted Bunting    | Secure                 |
| <i>Emberiza tahapisis</i>       | Rock Bunting              | Secure                 |
| <i>Eremomela icteropygialis</i> | Yellowbellied Eremomela   | Secure                 |
| <i>Eremopterix verticalis</i>   | Greybacked Finchlark      | Secure                 |
| <i>Erythropygia leucophrys</i>  | Whitebrowed Robin         | Secure                 |
| <i>Erythropygia paena</i>       | Kalahari Robin            | Secure                 |
| <i>Estrilda erythronotos</i>    | Blackcheeked Waxbill      | Secure                 |
| <i>Eupodotis afraoides</i>      | Whitequilled Korhaan      | Secure                 |
| <i>Eupodotis ruficrista</i>     | Redcrested Korhaan        | Secure                 |
| <i>Eurocephalus anguitemens</i> | Whitecrowned Shrike       | Secure                 |
| <i>Falco biarmicus</i>          | Lanner Falcon             | Secure                 |
| <i>Falco chicquera</i>          | Rednecked Falcon          | Secure                 |
| <i>Falco subbuteo</i>           | Hobby Falcon              | Secure -               |
| <i>Falco tinnunculus</i>        | Rock Kestrel              | Secure                 |
| <i>Falco vespertinus</i>        | Western Redfooted Kestrel | Secure                 |
| <i>Francolinus adspersus</i>    | Redbilled Francolin       | Secure                 |
| <i>Francolinus sephaena</i>     | Crested Francolin         | Secure                 |
| <i>Francolinus swainsonii</i>   | Swainson's Francolin      | Secure                 |
| <i>Gallinago nigripennis</i>    | Ethiopian Snipe           | Secure                 |
| <i>Gyps africanus</i>           | Whitebacked Vulture       | <b>Near Threatened</b> |
| <i>Hieraaetus pennatus</i>      | Booted Eagle              | <b>Endangered</b>      |
| <i>Hirundo abyssinica</i>       | Lesser Striped Swallow    | Secure                 |

|                                  |                                |                   |
|----------------------------------|--------------------------------|-------------------|
| <i>Hirundo cucullata</i>         | Greater Striped Swallow        | Secure            |
| <i>Hirundo fuligula</i>          | Rock Martin                    | Secure            |
| <i>Hirundo rustica</i>           | European Swallow               | Secure -          |
| <i>Hirundo semirufa</i>          | Redbreasted Swallow            | Secure            |
| <i>Lamprotonis australis</i>     | Burchell's Starling            | Secure            |
| <i>Lamprotonis nitens</i>        | Glossy Starling                | Secure            |
| <i>Laniarius atrococcineus</i>   | Crimsonbreasted Shrike         | Secure            |
| <i>Lanius collaris</i>           | Fiscal Shrike                  | Secure            |
| <i>Lanius collurio</i>           | Redbacked Shrike               | Secure -          |
| <i>Lanius minor</i>              | Lesser Grey Shrike             | Secure -          |
| <i>Melaenornis infuscatus</i>    | Chat Flycatcher                | Secure            |
| <i>Melaenornis mariquensis</i>   | Marico Flycatcher              | Secure            |
| <i>Melierax canorus</i>          | Pale Chanting Goshawk          | Secure            |
| <i>Merops apiaster</i>           | European Bee-Eater             | Secure -          |
| <i>Merops hirundineus</i>        | Swallowtailed Bee-Eater        | Secure            |
| <i>Micronisus gabar</i>          | Gabar Goshawk                  | Secure            |
| <i>Milvus migrans</i>            | Black Kite                     | Secure -          |
| <i>Milvus parasitus</i>          | Yellowbilled Kite              | Secure            |
| <i>Mirafrapa passerina</i>       | Monotonous Lark                | Secure            |
| <i>Monticola brevipes</i>        | Shorttoed Rock Thrush          | Secure            |
| <i>Muscicapa striata</i>         | Spotted Flycatcher             | Secure -          |
| <i>Nectarinia fusca</i>          | Dusky Sunbird                  | Secure            |
| <i>Nectarinia talatala</i>       | Whitebellied Sunbird           | Secure            |
| <i>Nilaus afer</i>               | Brubru                         | Secure            |
| <i>Numida meleagris</i>          | Helmeted Guineafowl            | Secure            |
| <i>Oena capensis</i>             | Namaqua Dove                   | Secure            |
| <i>Onychognathus naboroupp</i>   | Palewinged Starling            | Secure            |
| <i>Parisoma subcaeruleum</i>     | Titbabbler                     | Secure            |
| <i>Parus cinerascens</i>         | Ashy Tit                       | Secure            |
| <i>Passer diffusus</i>           | Southern Grey-headed Sparrow   | Secure            |
| <i>Passer motitensis</i>         | Great Sparrow                  | Secure            |
| <i>Plocepasser mahali</i>        | Whitebrowed Sparrowweaver      | Secure            |
| <i>Ploceus velatus</i>           | Masked Weaver                  | Secure            |
| <i>Polemaetus bellicosus</i>     | Martial Eagle                  | <b>Endangered</b> |
| <i>Polihierax semitorquatus</i>  | Pygmy Falcon                   | Secure            |
| <i>Prinia flavicans</i>          | Blackchedded Prinia            | Secure            |
| <i>Psophocichla litsitsirupa</i> | Groundscraper Thrush           | Secure            |
| <i>Pterocles bicinctus</i>       | Doublebanded Sandgrouse        | Secure            |
| <i>Pterocles namaqua</i>         | Namaqua Sandgrouse             | Secure            |
| <i>Pycnonotus nigricans</i>      | Redeyed Bulbul                 | Secure            |
| <i>Pytilia melba</i>             | Melba Finch                    | Secure            |
| <i>Quelea quelea</i>             | Redbilled Quelea               | Secure            |
| <i>Rhinopomastus cyanomelas</i>  | Scimitar-billed Woodhoopoe     | Secure            |
| <i>Rhinoptilus chalcopterus</i>  | Bronzewinged Courser           | Secure            |
| <i>Scopus umbretta</i>           | Hamerkop                       | Secure            |
| <i>Serinus atrogularis</i>       | Blackthroated Canary           | Secure            |
| <i>Smutsornis africanus</i>      | Doublebanded Courser           | Secure            |
| <i>Sporopipes squamifrons</i>    | Scalyfeathered Finch           | Secure            |
| <i>Streptopelia capicola</i>     | Cape Turtle Dove               | Secure            |
| <i>Streptopelia senegalensis</i> | Laughing Dove                  | Secure            |
| <i>Struthio camelus</i>          | Ostrich                        | Secure            |
| <i>Sylvietta rufescens</i>       | Longbilled Crombec             | Secure            |
| <i>Tchagra australis</i>         | Threestreaked Tchagra          | Secure            |
| <i>Terathopius ecaudatus</i>     | Bateleur                       | <b>Endangered</b> |
| <i>Thripias namaquus</i>         | Bearded Woodpecker             | Secure            |
| <i>Tockus erythrorhynchus</i>    | Redbilled Hornbill             | Secure            |
| <i>Tockus leucomelas</i>         | Southern Yellowbilled Hornbill | Secure            |
| <i>Tockus nasutus</i>            | Grey Hornbill                  | Secure            |
| <i>Torgos tracheliotus</i>       | Lappetfaced Vulture            | <b>Vulnerable</b> |
| <i>Tricholaema leucomelas</i>    | Pied Barbet                    | Secure            |
| <i>Turdoides bicolor</i>         | Pied Babbler                   | Secure            |
| <i>Turtur chalcospilos</i>       | Greenspotted Dove              | Secure            |

|                               |                     |        |
|-------------------------------|---------------------|--------|
| <i>Upupa epops</i>            | Hoopoe              | Secure |
| <i>Uraeginthus angolensis</i> | Blue Waxbill        | Secure |
| <i>Uraeginthus granatinus</i> | Violeteared Waxbill | Secure |
| <i>Urocolius indicus</i>      | Redfaced Mousebird  | Secure |
| <i>Vanellus armatus</i>       | Blacksmith Plover   | Secure |
| <i>Vanellus coronatus</i>     | Crowned Plover      | Secure |
| <i>Vanellus senegallus</i>    | Wattled Plover      | Secure |
| <i>Vidua regia</i>            | Shafttailed Whydah  | Secure |
| <i>Zosterops senegalensis</i> | Yellow White-Eye    | Secure |

Appendix B

**8**

THURSDAY 2 JULY 2020

**THE NAMIBIAN**



**WALVIS BAY  
SALT HOLDINGS**  
a Bud Group Company

*Walvis Bay Salt Refiners' 10,000 meals  
a ray of hope for the restituted*



*"Walvis Bay  
Salt Refiners has  
been a corporate  
citizen of Walvis Bay  
for more than  
55 years."*

**CALL FOR PUBLIC PARTICIPATION**

**ENVIRONMENTAL IMPACT ASSESSMENT FOR  
MINERAL EXPLORATION ON EPL 6550**

This notice serves to inform all interested and affected parties that an application for the environmental clearance certificate will be launched with the Environmental Commissioner in terms of the Environmental Management Act (No. 7 of 2007) and the Environmental Regulations (SN 30 of 2012). The project will comprise of conventional mineral exploration activities on the granted license.

**Location:** The mineral license is located 24 km Northeast of Karibib and covers farms Eitro.

**Proponent:** Eliphias Shamingua Shipanga

**ENVIRONMENTAL IMPACT ASSESSMENT FOR  
MINERAL EXPLORATION ON EPL 7261**

This notice serves to inform all interested and affected parties that an application for the environmental clearance certificate will be launched with the Environmental Commissioner in terms of the Environmental Management Act (No. 7 of 2007) and the Environmental Regulations (SN 30 of 2012). The project will comprise of conventional mineral exploration activities on the granted license.

**Location:** The mineral license is located 8 km Northwest of Karibib and covers farms Niewoudt, Orguati, Kranzberg, and Anrieth.

**Proponent:** Esegiel Xamseib

All interested and affected parties are hereby invited to register and submit their comments regarding the proposed project on or before 17/07/2020. Contact details for registration and further information:

**Mr. N Amutenya.**  
Email: [eia@impalac.com](mailto:eia@impalac.com)  
Tel: 085 663 0598





“The rising number of cases at Walvis Bay warrants additional containment measures to slow down the rate of

Swakopmund and Arandis local authority areas.

“With the exponential increase of cases at Walvis Bay, the three

only permits to be issued and authorised to travel into and out of the three local authority areas, will be provided for these categories. Travel between other towns in the Erongo region and to the rest of the country will be permitted,” he said.

Shangula elaborated

### CALL FOR PUBLIC PARTICIPATION

#### ENVIRONMENTAL IMPACT ASSESSMENT FOR MINERAL EXPLORATION ON EPL 6550

This notice serves to inform all interested and affected parties that an application for the environmental clearance certificate will be launched with the Environmental Commissioner in terms of the Environmental Management Act (No.7 of 2007) and the Environmental Regulations (GN 30 of 2012). The project will comprise of conventional mineral exploration activities on the granted license.

**Location:** The mineral license is located 24 km Northeast of Karibib and covers farms Etiro.

**Proponent:** Eliphias Shaningua Shipanga

#### ENVIRONMENTAL IMPACT ASSESSMENT FOR MINERAL EXPLORATION ON EPL 7261

This notice serves to inform all interested and affected parties that an application for the environmental clearance certificate will be launched with the Environmental Commissioner in terms of the Environmental Management Act (No.7 of 2007) and the Environmental Regulations (GN 30 of 2012). The project will comprise of conventional mineral exploration activities on the granted license.

**Location:** The mineral license is located 8 km Northwest of Karibib and covers farms Niewoudt, Onguati, Kranzberg, and Ameib.

**Proponent:** Eseguel Xamseb

All interested and affected parties are hereby invited to register and submit their comments regarding the proposed project on or before 17/07/2020. Contact details for registration and further information:

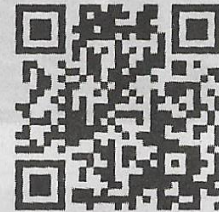
**Mr. N Amutenya.**

**Email:** eia@impalac.com

**Tel:** 085 663 0598



### Connect with the news ...



Just scan this QR logo with your smartphone and you'll go straight to our website!



Find our page on Facebook: *The Namibian*

2 TUESDAY 7 JULY 2020

NATIONAL NEWS

**ESAU FROM PAGE 1**

He never interacted with those lawyers or received money from Fishcor through them, Esau says. While the lawyers involved in the payments by Fishcor have been given a chance to obtain warrants additional con-

“With the exponential increase of cases at Walvis Bay, the three

seven months in jail. Esau has placed a 40-page affidavit, in which he denies having been involved in any of the crimes with which he is charged, before magistrate Duard Kesslau. Defence lawyer Richard Metcalfe, who is leading a legal team

into and out of the three local authority areas, will be provided for these categories. Travel between other towns in the Erongo region and to the rest of the country will be permitted,” he said. Shangula elaborated

starvation”, he adds. Esau also states that “not a single dollar” in his bank accounts was linked to any of the charges against him, that he acquired his house and farm legally in 1996 and 2002, respectively, long before he was appointed as minister

**JOOSTE FROM PAGE 1**

The national fishing company was linked to laundering money for the ruling party, including president Hage Geingob’s Swapo political campaign. The Minister of Budget

He added that the number of people entering hospitals will also be minimised, and vigorous screening for symptoms will continue to be enhanced in an effort to protect the healthcare system, he explained. As per regulations for stage 3, the buying and

**THE NAMIBIAN**

He said the process for temporary boards is entirely different and takes place in different circumstances—where an entire board has become vacant. “The process to appoint substantive boards requires Cabinet approval and can be time-consuming,” he said.

Shangula also said public transport from and into the three restricted areas is done to protect yourselves, your family members and the Namibian nation. Together we can overcome Covid-19,” he said.

**CALL FOR PUBLIC PARTICIPATION**

**ENVIRONMENTAL IMPACT ASSESSMENT FOR MINERAL EXPLORATION ON EPL 6550**

This notice serves to inform all interested and affected parties that an application for the environmental clearance certificate will be launched with the Environmental Commissioner in terms of the Environmental Management Act (No.7 of 2007) and the Environmental Regulations (GN 30 of 2012). The project will comprise of conventional mineral exploration activities on the granted license.

**Location:** The mineral license is located 24 km Northeast of Karibib and covers farms Etiro.

**Proponent:** Eliphaz Shaningua Shipanga

**ENVIRONMENTAL IMPACT ASSESSMENT FOR MINERAL EXPLORATION ON EPL 7261**

This notice serves to inform all interested and affected parties that an application for the environmental clearance certificate will be launched with the Environmental Commissioner in terms of the Environmental Management Act (No.7 of 2007) and the Environmental Regulations (GN 30 of 2012). The project will comprise of conventional mineral exploration activities on the granted license.

**Location:** The mineral license is located 8 km Northwest of Karibib and covers farms Niewoudt, Orquell, Kranzberg, and Anneb.

**Proponent:** Esajie! Xamseb

All interested and affected parties are hereby invited to register and submit their comments regarding the proposed project on or before 17/07/2020. Contact details for registration and further information:

**Mr. N Amutunya,**  
Email: eia@impalac.com  
Tel: 065 663 0588



Connect with the news ...



Just scan this QR logo with your smartphone and you'll go straight to our website!



Find our page on Facebook: *The Namibian*



**E-mail addresses for The Namibian**

- News desk.....news@namibian.com.na
- Investigative Unit.....investigations@namibian.com.na
- Sports news.....sport@namibian.com.na
- Letters.....letters@namibian.com.na
- Editor.....editor@namibian.com.na
- Weekender.....weekender@namibian.com.na
- Sales/Advertising.....sales@namibian.com.na
- Classifieds.....classifieds@namibian.com.na
- Accounts.....accounts@namibian.com.na
- Webmaster.....webmaster@namibian.com.na
- Circulation.....circulation@namibian.com.na

**Windhoek Office:** Phone 061-279 600; Fax 061-279 602  
Address: John Meinert St., PO Box 20783, Windhoek

**Oshakati Office:** Phone: 065-220 246; Fax: 065-224 521  
Address: Biala centre, Unit 13, Frans Indongo Yellow Complex, PO Box 311, Oshakati  
Tuyisno Haidula's cell number: 081-339 3112; e-mail: tuyisno@namibian.com

Advertising in Oshakati: 065-224 521 - oshakati@namibian.com

**Swakopmund Office:** Telephone: 064-463 751 or 064-403 272; Fax: 064-463 756  
Address: Haus Altona, cnr Tobias Haiyeko and Daniel Tjongarero Strs., Swakopmund  
Adam Hartman's cell number: 081-250 5966; e-mail: swakop@namibian.com.na

**Keetmanshoop Office:** Telephone: 063-225 872; Fax: 063-225 877  
Address: Sam Nujoma Avenue, Social Security Building, 1<sup>st</sup> floor office number 130  
Ludman Cleete's cell number: 0812736814; e-mail: ludman@namibian.com.na

Printed by WordPress, Windhoek: 083 100 1000

**Weather**

**Interior:** Fine and cold to mild in the south, elsewhere fine and mild to warm but hot in the far north.

**Coast:** Partly cloudy and mild to warm with fog patches at places.

**Wind:** Moderate northwesterly to southwesterly becoming strong southerly later.

**Temperature (min-max)**

|              |       |            |       |
|--------------|-------|------------|-------|
| Katima       | 04-26 | Windhoek   | 03-22 |
| Rundu        | 06-25 | Mariental  | 02-21 |
| Ondangwa     | 09-28 | Keetmans   | 02-19 |
| Grootfontein | 05-25 | Herries    | 09-23 |
| Gobabis      | 02-24 | Walvis Bay | 08-26 |
| Aranos       | 04-23 | Luderitz   | 10-24 |



**BIB**

near Karibib  
lifespan of

ine and the  
the Karibib  
bly qualified  
housing for  
provide the

ved plans

ion covering

to  
t in

is

DM0202000363109\_IK

**CALL FOR PUBLIC PARTICIPATION  
ENVIRONMENTAL IMPACT ASSESSMENT FOR  
MINERAL EXPLORATION ON EPL 6550**

This notice serves to inform all interested and affected parties that an application for an environmental clearance certificate will be launched with the Environmental Commissioner in terms of the Environmental Management Act (No.7 of 2007) and the Environmental Regulations (GN 30 of 2012). The project will comprise of conventional mineral exploration activities on the granted license.

**Location:** The mineral license is located 24 km Northeast of Karibib and covers farms Etiro.

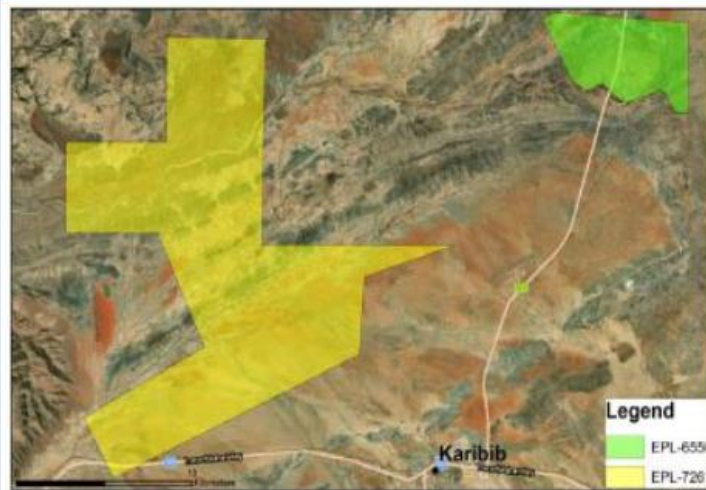
**Name of Proponent:** Eliphaz Shaningua Shipanga

**CALL FOR PUBLIC PARTICIPATION  
ENVIRONMENTAL IMPACT ASSESSMENT FOR  
MINERAL EXPLORATION ON EPL 7261**

This notice serves to inform all interested and affected parties that an application for an environmental clearance certificate will be launched with the Environmental Commissioner in terms of the Environmental Management Act (No.7 of 2007) and the Environmental Regulations (GN 30 of 2012). The project will comprise of conventional mineral exploration activities on the granted license.

**Location:** The mineral license is located 8 km Northwest of Karibib and covers farms Niewoudt, Onguati, Kranzberg, and Ameib.

**Name of Proponent:** Esegel Xamseb



All interested and affected parties are hereby invited to register and submit their comments regarding the proposed project on or before **17/07/2020**. Contact details for registration and further information: **Mr. N Amutenya**.

Email: [eia@impalac.com](mailto:eia@impalac.com), Tel: 0856630598



“And the this momen and we hac shootout, th it will be dif round.” Sua in the tunne was pictur Gyan misse rankles with

“After th you came o like you’re by hurting professional to your dress and then no

Suarez w saying “the belongs to r Maradona’s at the 1986’

Ghana w penalty sho Africa’s gold World Cup. since, no A close to re stage. The is where Lu internationa later, he wo Dutch giant

Suarez to his country final since beaten 3-2 without him



## Tertiary Programmes

### Study Opportunities

#### Certificate in Community-Based Work With Children and Youth (CWCY), 18 months - NQF LEVEL: 4

##### Aim:

The Certificate in Community-Based Work With Children and Youth aims to enhance effectiveness in working with children at risk and to give students knowledge, skills and information to study key trends, theories and approaches in working with vulnerable groups.

##### Who May Apply:

Prospective students who wish to work with Children, Families and Communities (affected by HIV & Aids, Conflict, Poverty and Displacement in Africa). People working with youth, formally and informally (Churches, Communities, NGOs, Ministry of Youth, etc.).

##### Admission Requirements:

Grade 10 Certificate or equivalent with a minimum of 25 points in six subjects on the Ministry of Education's point scale with an E symbol in English, plus 3 years of relevant experience, OR Grade 12 Certificate or equivalent with a minimum of 20 points in six subjects on the Ministry of Education's point scale, with an E symbol in English plus one year of relevant work experience.

#### Diploma in Youth Development (DYD), 2 year course - NQF LEVEL: 6

##### Aim:

This Programme aims to provide learners with theoretical knowledge and practical skills to enhance their effectiveness as youth workers. It will also prepare learners as practitioners in aspects of youth education.

##### Who May Apply:

People working with youth, formally and informally in Churches, Communities, NGOs, Ministry of Youth, etc).

##### Admission Requirements:

A Grade 12 Certificate with a minimum of 22 points on the Ministry of Education's point scale with an E-symbol in English, or any other equivalent qualification; One year field experience in youth work.

#### Bachelor of Arts in Youth and Community Development (BA:YCD), 3 year course - NQF LEVEL: 6

##### Aim:

The Bachelor of Arts in Youth Development Work aims to provide specific competencies required for effective youth development work that will enable beginners as well as experienced practitioners to develop and/or refine their skills in Youth Work. It further aims to equip students for effective youth development work at middle management level.

##### Who May Apply:

- Practitioners or Professionals working with youth including:
  - Civil Servants;
  - Community Development practitioners; and
  - Youth Workers.
- Interested individuals seeking competency at degree level in youth development work.

##### ADMISSION REQUIREMENTS

- Grade 12 (25 points in 5 subjects)
- E symbol in English OR
- Diploma in Youth Development



APPLICATIONS OPEN UNTIL  
14 AUGUST 2020 **APPLY NOW!**

"TAKING EDUCATION TO THE PEOPLE"



Alonso won his world titles with Renault in 2005 and 2006

## Fernando Alonso return to Formula 1 with Renault confirmed

**D**ouble Formula 1 world champion Fernando Alonso will return to the sport next year with Renault.

The Spaniard, 39 later this month, left F1 at the end of 2018 but always kept the door open for a potential comeback.

He will be returning with the team for whom he won his two titles in 2005-6.

"It's an extremely happy day for me coming back to F1 first but also to the team with which I had the best experience in the category," Alonso said.

Renault's progress back to the front stalled last year, when they slipped from fourth to fifth in the constructors' championship.

But Alonso said he believed that new rules, originally intended for 2021 but which have been delayed until 2022 as a result of the coronavirus crisis, gave the team the

chance to return to competitiveness.

"Probably my first intention was to go out in 2018 and see how life was outside the bubble and have a think for the 2021 rules," Alonso said.

"This has been postponed one year because of Covid but still it's worth being in the sport in 2021 as a preparation for me after two years not driving these cars, and to build up with the team and have a good season.

"I know only one team will be winning in 2020 - and in 2021 probably - but I think the 2022 rules will hopefully bring some fairness to the sport and some close action with teams more level and less scope to invent something that has a large performance advantage.

"There is time to build on those projects. I am relaxed, I am aware of what 2021 will be and I'm hopeful for 2022."

Renault F1 team principal and managing director Cyril Abiteboul said: "His presence in our team is a formidable asset on the sporting level but also for the brand to which he is very attached.

"His experience and determination will enable us to get the best out of each other to take the team towards the excellence that modern F1 demands.

"He will also bring to our team, which has grown very fast, a culture of racing and winning."

Alonso has signed for at least two years and there are options for him to continue beyond that.

He will partner the Frenchman Esteban Ocon, as a replacement for Daniel Ricciardo, who is moving to McLaren.

#### Can Alonso win at 40?

In addition to his two world titles, Alonso is the sixth most successful driver in F1 history in terms of wins with 32, and is regarded as one of the greatest racing drivers in the history of the sport.

He will turn 40 midway through his first season back but he said he did not believe age would be a barrier.

"The stopwatch is the only thing that matters, not the age," Alonso said. "I feel ready and I feel I'm at 100% in terms of driving.

"I did a couple of fitness tests 15 days ago and I had the best results in my career and I am motivated, happy and stronger than ever."

Alonso has kept himself busy since he left F1 at the end of 2018. He has become a two-time winner of the Le Mans 24 Hours, adding victory in 2019 to his first win in 2018, won the world endurance championship and also competed in this year's Dakar Rally.

He has set himself the target of winning motorsport's so-called triple crown, for which he needs to add only the Indy 500 to the Monaco Grand Prix and Le Mans victories he has already achieved.

Alonso starred on his debut at Indy in 2017, driving a McLaren-branded car run by Andretti Autosport.

But a second attempt last year with a newly established McLaren team ended in embarrassment after he failed to qualify because of what the team admitted were a series of organisational failures.

He is returning to America's biggest race this year with McLaren, on his delayed date in August.

He said he was "100% committed" to Indianapolis and would "start the serious job" with Renault in September-bbc sports

#### CALL FOR PUBLIC PARTICIPATION ENVIRONMENTAL IMPACT ASSESSMENT FOR MINERAL EXPLORATION ON EPL 6550

This notice serves to inform all interested and affected parties that an application for an environmental clearance certificate will be launched with the Environmental Commissioner in terms of the Environmental Management Act (No 7 of 2007) and the Environmental Regulations (GN 30 of 2012). The project will comprise of conventional mineral exploration activities on the granted license.

**Location:** The mineral license is located 24 km Northeast of Karibib and covers farms Etiro.

**Name of Proponent:** Eliphaz Shaningua Shipanga

#### CALL FOR PUBLIC PARTICIPATION ENVIRONMENTAL IMPACT ASSESSMENT FOR MINERAL EXPLORATION ON EPL 7261

This notice serves to inform all interested and affected parties that an application for an environmental clearance certificate will be launched with the Environmental Commissioner in terms of the Environmental Management Act (No 7 of 2007) and the Environmental Regulations (GN 30 of 2012). The project will comprise of conventional mineral exploration activities on the granted license.

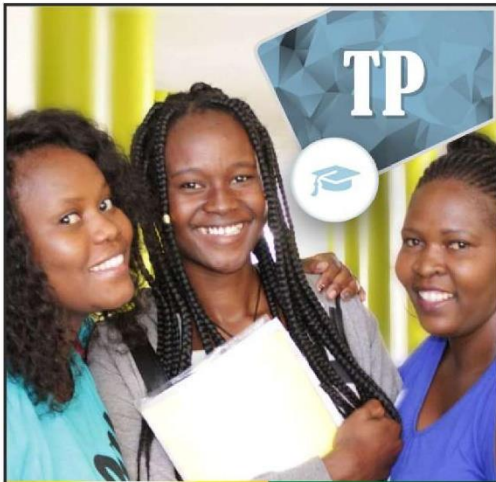
**Location:** The mineral license is located 8 km Northwest of Karibib and covers farms Niewoudt, Onguati, Kranzberg, and Amelb.

**Name of Proponent:** Esajeli Xamsab



All interested and affected parties are hereby invited to register and submit their comments regarding the proposed project on or before 17/07/2020. Contact details for registration and further information: Mr. N Amutenya. Email: eia@impalac.com, Tel: 0856630598





# Tertiary Programmes

## Study Opportunities

### Certificate in Community-Based Work With Children and Youth (CWYC)

NOF LEVEL: 4  
18 MONTHS

**Aim:**  
The Certificate on Community-Based Work with Children and Youth aims to enhance effectiveness in working with children at risk and to give students knowledge, skills and information to study key trends, theories and approaches in working with vulnerable groups.

**Who May Apply:**  
Prospective students who wish to work with Children, Families and Communities (affected by HIV & Aids, Conflict, Poverty and Displacement in Africa). People working with youth, formally and informally (Churches, Communities, NGOs, Ministry of Youth, etc.).

**Admission Requirements:**  
Grade 10 Certificate or equivalent with a minimum of 25 points in six subjects on the Ministry of Education's point scale with an E symbol in English, plus 3 years of relevant experience, OR Grade 12 Certificate or equivalent with a minimum of 20 points in six subjects on the Ministry of Education's point scale, with an E symbol in English plus one year of relevant work experience.

### Diploma in Youth Development (DYD)

NOF LEVEL: 6  
2 YEARS

**Aim:**  
This Programme aims to provide learners with theoretical knowledge and practical skills to enhance their effectiveness as youth workers. It will also prepare learners as practitioners in aspects of youth education.

**Who May Apply:**  
People working with youth, formally and informally (in Churches, Communities, NGOs, Ministry of Youth, etc.).

**Admission Requirements:**  
A Grade 12 Certificate with a minimum of 22 points on the Ministry of Education's point scale with an E-symbol in English, or any other equivalent qualification; One year field experience in youth work.

### Bachelor of Arts in Youth and Community Development (BA:YCD)

3 YEARS

**Aim:**  
The Bachelor of Arts in Youth Development Work aims to provide specific competencies required for effective youth development work that will enable beginners as well as experienced practitioners to develop and/or refine their skills in Youth Work. It further aims to equip students for effective youth development work at middle management level.

**Who May Apply:**  
- Practitioners or Professionals working with youth including:  
- Civil Servants;  
- Community Development practitioners; and  
- Youth Workers.  
- Interested individuals seeking competency at degree level in youth development work.

**ADMISSION REQUIREMENTS**  
- Grade 12 (25 points in 5 subjects)  
- E symbol in English OR  
- Diploma in Youth Development

**APPLY NOW** → CLOSING DATE: 14 AUGUST 2019



Visit our website  
www.namcol.edu.za



"TAKING EDUCATION TO THE PEOPLE"

# Klopp: 'I want a Liverpool team with a Scouse soul'

Liverpool manager Jurgen Klopp says his dream is to have a team "full of Scousers" - with all first-team players graduating from the club's academy.

Midfielder Curtis Jones - born in Liverpool and a product of the club's youth system - signed a five-year contract on Saturday.

Jones, 19, then scored his first Premier League goal on Sunday as the new champions beat Aston Villa 2-0.

"The dream is to have all the boys [from the academy]," Klopp said.

"The dream is to have a team full of 'Scousers'. What we want to be is the sport for everybody with a Scouse soul."

Klopp made clear he is looking for players with a certain outlook rather than judging them by birthplace - pointing to the three-year contract this week for England Under-17 winger Harvey Elliott, born in Surrey and a product of Fulham's youth system.

"Of course, if you love football and are talented, we want you to be here," the manager said.

Some of Liverpool's most notable players have been locally produced, though; former England internationals Steven Gerrard and Jamie Carragher were both born on Merseyside and emerged from the club's youth system.

More recently, Trent Alexander-Arnold has established himself



Jurgen Klopp

as Liverpool's first-choice right-back, also winning nine England caps.

Klopp said a number of other youth prospects are close to emulating the 21-year-old's success and that it is a "good thing".

"They are so humble and hard working," Klopp added.

"The perfect scenario is that we have these role model professionals around. If the boys follow this path with their talent, they will have proper careers."

Klopp - whose side visit Brighton in the Premier League on Wednesday - also said Sadio Mane is a "big example" of the progress players can make after joining the club.

The Senegal forward - signed from Southampton for £34m in June 2016 - has now hit 20 club goals for the third successive season, having scored against Aston Villa on Sunday.

"I remember this unbelievably talented boy we took from Southampton; he was really outstanding skill-wise but a little lack of consistency which is probably why people thought 'Really? So much money? You watch the wrong game,'" Klopp said.

"The level he performs at is unbelievable. He came as a young boy and he grew up, matured here." -bbc

### CALL FOR PUBLIC PARTICIPATION ENVIRONMENTAL IMPACT ASSESSMENT FOR MINERAL EXPLORATION ON EPL 6550

This notice serves to inform all interested and affected parties that an application for an environmental clearance certificate will be launched with the Environmental Commissioner in terms of the Environmental Management Act (No.7 of 2007) and the Environmental Regulations (GN 36 of 2012). The project will comprise of conventional mineral exploration activities on the granted license.

**Location:** The mineral license is located 24 km Northeast of Karibib and covers farms Elira

**Name of Proponent:** Eliphas Shaningua Shipanga

### CALL FOR PUBLIC PARTICIPATION ENVIRONMENTAL IMPACT ASSESSMENT FOR MINERAL EXPLORATION ON EPL 7261

This notice serves to inform all interested and affected parties that an application for an environmental clearance certificate will be launched with the Environmental Commissioner in terms of the Environmental Management Act (No.7 of 2007) and the Environmental Regulations (GN 36 of 2012). The project will comprise of conventional mineral exploration activities on the granted license.

**Location:** The mineral license is located 8 km Northwest of Karibib and covers farms Newoudt, Ongulit, Kranzberg, and Arneib.

**Name of Proponent:** Essegil Ximiseb



All interested and affected parties are hereby invited to register and submit their comments regarding the proposed project on or before 17/07/2020. Contact details for registration and further information: Mr. N Amutenya.

Email: eia@impalaec.com; Tel: 0856630598



## gossip

Chelsea manager Frank Lampard has targeted West Ham and England midfielder Declan Rice, 21, as a potential centre-back for his side. **(Times)**

Manchester City and Manchester United are both interested in the same central defenders, with Napoli and Senegal defender Kalidou Koulibaly, 29, and 25-year-old Milan Skriniar, who plays for Inter Milan and Sloviakia, on their radar. **(Independent)**

Chelsea and Real Madrid have both stepped up their efforts to sign Lazio midfielder Sergej Milinkovic-Savic as they try to beat Manchester United and Paris St-Germain to the 25-year-old Serbia international. **(Gazzetta dello Sport, via Express)**

Manchester United manager Ole Gunnar Solskjaer apparently told Bournemouth centre-back Nathan Ake that "we need a left-footed centre-back, so keep going," in a post-match exchange with the 25-year-old Dutchman after the Cherries lost 5-2 at Old Trafford on Saturday. **(Telegraph)**

Ake could be joined by manager Eddie Howe and Norway striker Joshua King, 28, in leaving the Cherries in the summer. **(Mail)**

Crystal Palace are planning a £25m move for Celtic's French striker Ousmane Edouard, 22. **(Sun)**

Bayern Munich will leave it to 28-year-old Austria defender David Alaba, whose contract runs out in 2021, to decide if he wants to stay with them or move to the Premier League. **(Mirror)**

Juventus are looking at a summer move for Chelsea and Italy midfielder Jorginho, 28. **(Tuttosport, via Sun)**

Real Madrid are not planning to make any signings this summer because of the impact of the coronavirus pandemic. Instead, the club hope to raise £190m in player sales, with Wales winger Gareth Bale, 30, being linked with a move away. **(Marca, via Star)**

Real Madrid manager Zinedine Zidane was the reason why Morocco international Achraf Hakimi, 21, left the Spanish club to join Inter Milan, according to the defender's agent. **(Marca)**

## CAREERS

# Bad work habits and how to overcome them

**N**ot sure what's potentially holding you back at work? Perhaps your bad work habit is tarnishing your reputation.

Bad habits are an inevitable part of our personal lives. And with the countless hours spent at work, they can easily creep into our professional lives too.

But while you may be hyper-aware of your bad habits at home, the office can be a different story. If you're in luck, your co-worker has probably made you aware of your flaws. If not, we suggest you read through the following bad office habits and how you can kick them to the curb.

## Your bad habit: You're set in your ways

Although adopting an if-it-ain't-broken-don't-fix-it attitude may work in some situations, in others – especially the ever-changing work environment – it usually doesn't work. Contrary to what you might think, sticking to the same way that things have always been done can easily make you replaceable.

## How to overcome it

If your career goal is to grow professionally and boost your reputation, making connections with the people you work with, contributing to great ideas and being innovative is the way to go about it. Resisting change often leads to being left behind at work. The sooner you become comfortable with the idea that there is always going to be someone smarter or younger than you, the sooner you'll adapt to evolving environments.

## Your bad habit: You're Chatty Charlie of the office

You've got plenty of work to do but listening in on the latest office drama is more important. While joining in on a little gossip while you wait for your coffee is inevitable, spending hours away from your desk stirring



the pot will make you come across as a troublemaker or unproductive.

W

## How to overcome it

You obviously love being in the company of others, which is an excellent asset to have when used appropriately. Instead of worrying about who said what to whom when, use that energy for work purposes. If you'd like to interact with more people, ask your manager for more opportunities to work on projects that will allow you to collaborate with others.

Even a few hours spent working with others will break that need to loom over your colleague's desk for a not-so-quick catch-up session.

## Your bad habit: You're never on time

Whether it's arriving on time at work or submitting your tasks in

time, you're always behind schedule. Whether this is a case of putting things off for the last minute or thinking about how much you have to do rather than doing anything, you need to realise the negative impact your actions have on your performance. Repeatedly missing deadlines or arriving late at work can

make those you work with question your reliability.

## How to overcome it

Save your reputation by making an effort of arriving early to meetings or returning on time from your lunch breaks. Respecting your time and that of others is one of the most

fundamental factors in any business setting. Not only will changing the bad habit boost your reputation, but you'll command more respect from your colleagues and business partners one day when you hold your own corner office.

## Your bad habit: Social media 24/7

If tweeting, posting images on Instagram and commenting on quirky posts were a race, you'd win the Olympics. You simply cannot unplug from your social media networks. In the long run, this can cost you your reputation and job.

## How to overcome it

Engaging in social networks is naturally addictive, and the more you interact on these platforms, the more time you want to spend online, which leads to distractions.

The best way to keep focused on your work is to allocate times to check your social feeds. This will ensure that you settle into your work without being sucked into the trap of wanting more. If you must get your hourly dose of social media updates, ask your supervisor if you can put your social media skills to good use – for the company's benefit of course. In that way, you'll get your social media fix and the company will boost its online presence through your expertise. -careers 24

## Middle Management Development Programme (MMDP)



Increase your competitive advantage in the public sector through an enhanced management and leadership skills training!

### PROGRAMME MODULES

- |   |                          |
|---|--------------------------|
| <b>Module 1:</b> Core Values of Public Administration & The New Public Management | (27 - 31 July 2020)      |
| <b>Module 2:</b> Organisational Development                                       | (17 - 21 August 2020)    |
| <b>Module 3:</b> Relationship Management  | (21 - 25 September 2020) |
| <b>Module 4:</b> Tactical Policy, Financial, and Programme Management             | (05 - 09 October 2020)   |

Investment: N\$ 16,000.00 payable in 4 instalments!

**NIPAM is the only training provider mandated to capacitate the Namibian Public Sector!**

For more information please contact:  
Mr. Kathele Ipinge, Manager: Business Development  
Tel: +264 61 296 4798. Mobile: +264 811 261 628  
E-Mail: [hiping@nipam.na](mailto:hiping@nipam.na), [www.nipam.na](http://www.nipam.na)



**NIPAM**  
NAMIBIA INSTITUTE OF PUBLIC  
ADMINISTRATION AND MANAGEMENT

### CALL FOR PUBLIC PARTICIPATION ENVIRONMENTAL IMPACT ASSESSMENT FOR MINERAL EXPLORATION ON EPL 6550

This notice serves to inform all interested and affected parties that an application for an environmental clearance certificate will be launched with the Environmental Commissioner in terms of the Environmental Management Act (No. 7 of 2007) and the Environmental Regulations (GN 30 of 2012). The project will comprise of conventional mineral exploration activities on the granted license.

**Location:** The mineral license is located 24 km Northeast of Karibib and covers farms E110.

**Name of Proponent:** Eliphas Shaningua Shipanga

### CALL FOR PUBLIC PARTICIPATION ENVIRONMENTAL IMPACT ASSESSMENT FOR MINERAL EXPLORATION ON EPL 7261

This notice serves to inform all interested and affected parties that an application for an environmental clearance certificate will be launched with the Environmental Commissioner in terms of the Environmental Management Act (No. 7 of 2007) and the Environmental Regulations (GN 30 of 2012). The project will comprise of conventional mineral exploration activities on the granted license.

**Location:** The mineral license is located 8 km Northwest of Karibib and covers farms Niewoudt, Onguati, Kranzberg, and Amelb.

**Name of Proponent:** Esagiol Kamsob



All interested and affected parties are hereby invited to register and submit their comments regarding the proposed project on or before 17/07/2020. Contact details for registration and further information: Mr. N Amutenya.

Email: [eia@impalac.com](mailto:eia@impalac.com), Tel: 0856630598



@whkobservers

FRIDAY 03 JULY 2020 | 13

SPORTS



## Mourinho: Spurs boss fears football 'going in wrong direction' after VAR controversy

### CALL FOR PUBLIC PARTICIPATION ENVIRONMENTAL IMPACT ASSESSMENT FOR MINERAL EXPLORATION ON EPL 6550

This notice serves to inform all interested and affected parties that an application for an environmental clearance certificate will be launched with the Environmental Commissioner in terms of the Environmental Management Act (No.7 of 2007) and the Environmental Regulations (GN 30 of 2012). The project will comprise of conventional mineral exploration activities on the granted license.

Location: The mineral license is located 24 km Northeast of Karibib and covers farms Etrio.

Name of Proponent: Elphas Shaningua Shipanga

### CALL FOR PUBLIC PARTICIPATION ENVIRONMENTAL IMPACT ASSESSMENT FOR MINERAL EXPLORATION ON EPL 7261

This notice serves to inform all interested and affected parties that an application for an environmental clearance certificate will be launched with the Environmental Commissioner in terms of the Environmental Management Act (No.7 of 2007) and the Environmental Regulations (GN 30 of 2012). The project will comprise of conventional mineral exploration activities on the granted license.

Location: The mineral license is located 8 km Northwest of Karibib and covers farms Nieuwoudt, Onquati, Kranzberg, and Ameib.

Name of Proponent: Esageiel Xamse



All interested and affected parties are hereby invited to register and submit their comments regarding the proposed project on or before 17/07/2020. Contact details for registration and further information: Mr. N Amutenya.

Email: eia@impalac.com, Tel: 0858630598



**T**ottenham boss Jose Mourinho fears football is going in the wrong direction after his side had a goal controversially ruled out by VAR in the 3-1 defeat at Sheffield United.

Blades boss Chris Wilder said the technology was a farce after Harry Kane's equalising strike was chalked off for handball in the build-up.

Lucas Moura's arm appeared to brush the ball as he fell under a challenge.

"The referee is in the office," said Mourinho.

"I never complain at the guy with the whistle because it's not the referee any more.

"I think the referee should always be the man on the pitch and the people in the office should just support and assist.

"That's not the way it is. The referee who is not very good on the pitch, we cannot expect that he's good in the office.

"We're going in a direction that's really bad for the beautiful game, the game that everybody fell in love with."

#### 'We cannot mentally die from Michael Oliver's decision'

Tottenham struggled to find their rhythm after that decision as the Blades eased to victory thanks to goals by Sander Berge, Lys Mousset and Oli McBurnie, before Kane grabbed a late consolation.

Mourinho, whose side are now nine points off fourth place and seven off sixth, said his players need to be stronger mentally

to deal with decisions that are difficult to take.

The former Chelsea boss added: "We have to do better, we have to be mentally stronger to cope with what happened during the game.

"We cannot mentally die after Michael Oliver's decision."

#### 'A farce of a decision'

Sheffield United have been on the wrong end of some VAR decisions this season and Blades boss Wilder felt the Tottenham equaliser should have stood.

"There is no deliberate handball in there," he said.

"I think it is a bit of a farce rule at the moment. We've been the victims of a couple of those decisions. I still don't think it is the right decision if I am being honest.

"One has gone for us and we will gladly take that but I hope the game isn't dominated by that decision and is looked at as a decent performance from us."

#### But did VAR get it correct?

As frustrating as the decision was for Tottenham, VAR was not in the wrong. It was correctly applying the rules relating to handball as they currently stand.

Ifab, the body that determines the laws of the game, states: "Accidental handball by an attacking player should only be penalised if it 'immediately' results in a goal or an obvious opportunity for the player and/or their team to score a goal (i.e. following the handball, the ball travels only a short distance and/

or there are very few passes)."

Whether Tottenham should have been awarded a free-kick for a foul on Moura that led to him handling the ball is another issue.

#### 'Show common sense' - what pundits said

Ex-England striker Alan Shearer told Match of the Day: "The VAR referee must be embarrassed to have to go back to the referee and tell him he has to disallow it. The law is awful."

Former Newcastle and Tottenham midfielder Jermaine Jenas also added on Match of the Day: "VAR is supposed to help the game but it is making it far worse and they need to figure it out."

Former Sheffield United midfielder Michael Brown, watching the game for BBC Radio 5 Live, described it as a "strange" but "correct" decision.

"Sheffield United will feel finally VAR has come back and helped them," he said.

"It's a strange one. The rule is there but Lucas Moura didn't know anything about it. Is it the correct decision? Yes it is. But Spurs are unfortunate not to score."

Sky Sports pundit Jamie Redknapp described it as "one of the worst decisions I have ever seen".

He added: "I get the letter of the law but we have to show common sense. It is accidental, why can't we show common sense?"

"It is difficult for Michael Oliver, it is the letter of the law, but that is a horrendous decision." -bbc

## gossip

**C**helsea and Manchester City could turn to Everton's France left-back Lucas Digne, 26, if they cannot prise England left-back Ben Chilwell, 23, away from Leicester. (ESPN)

Everton, Liverpool, Manchester City and Manchester United are due to watch Leon Bailey, 22, on Saturday, with the Bayer Leverkusen and Jamaica winger keen on a move to England. (Sky Sports)

Liverpool are close to signing Bayern Munich and Spain midfielder Thiago Alcantara, 29. (Sport)

The Premier League champions are also interested in Trabzonspor and Turkey goalkeeper Ugurcan Cakir, 24. (Talksport)

Manchester City boss Pep Guardiola has shortlisted Napoli and Senegal defender Kalidou Koulibaly, 29, Villarreal's Spain international Pau Torres, 23, and Benfica and Portugal international Ruben Dias, 23, as he looks to revamp his defence. (Times)

Sevilla are lining up a loan move for Chelsea and Spain goalkeeper Kepa Arrizabalaga, 25, whose future is uncertain at Stamford Bridge. (Sun)

Manchester United are open to letting Ivory Coast international Eric Bailly, 26, leave on loan next season, with La Liga club Valencia keen on the defender. (Sun)

Manchester United goalkeeper Dean Henderson, on loan at Sheffield United, has warned the Old Trafford club he will not wait around forever to become their first choice, amid interest in the 21-year-old Englishman from Chelsea. (Express)

Chelsea are keen on Lille's 24-year-old French goalkeeper Mike Maignan and his compatriot Alphonse Areola, 27, who is on loan at Real Madrid from Paris St-Germain. (Express)

However, Tottenham are also weighing up a summer move for Maignan, with boss Jose Mourinho considering the player as a successor to his current France goalkeeper Hugo Lloris, 33. (Sun)

West Ham manager David Moyes has revived his interest in Chelsea and England midfielder Ross Barkley, 26. The Blues rejected the Hammers' approach for a loan deal in January. (Mirror)

Former Aston Villa boss Tim Sherwood believes Villa captain Jack Grealish, 24, will join Manchester United this summer. (Birmingham Mail)

English midfielder Angel Gomes, 19, is targeting a move abroad but does not have an immediate deal lined up following his release by Manchester United. (Manchester Evening News)

Sheffield United have made a £3.5m bid for Reading midfielder John Swift, 25, but Leeds are also interested in the former England Under-21 international. (Mail)

Tottenham head coach Jose Mourinho says he would not swap Argentina midfielder Giovanni Lo Celso, 24, for Manchester United's Bruno Fernandes, after Spurs missed out on the 25-year-old Portuguese midfielder last summer. (Sky Sports)

Sheffield United are interested in signing Ghanaian defender Abdul Mumin, 22 from Danish club FC Nordsjaelland this summer. (Mail)

Eintracht Frankfurt's Filip Kostic, 27 could leave the Bundesliga side, with Inter Milan and Premier League clubs interested in the Serbia winger. (Goal)

## SPORTS

# Ghana players 'cannot forgive' Suarez handball 10 years on

ISAAC FANIN  
BBC SPORT AFRICA

**F**or me, the Uruguay game is a game I think we won," John Paintsil says, looking back on one of the most dramatic matches in men's World Cup history: the 2010 quarter-final between his Ghana side and Uruguay in Johannesburg.

The reality, though, is Ghana didn't win. A handball by Luis Suarez stopped a certain goalbound shot deep into injury time, in one of the most controversial and memorable moments of that tournament. Suarez was sent off - but Ghana missed the resulting spot-kick and, ultimately, went out on penalties after extra time.

The pain for Paintsil and his team-mate Hans Sarpei still lingers, 10 years on. For many Ghanaians, Suarez is the perpetrator of one of the greatest crimes in the country's sporting history.

"We were cheated," Paintsil says. "To clear the ball from the line with your hand - it's supposed to be a goal."

Paintsil says people still talk about the incident in Ghana.

"I can't forgive him because it was not an accident," Sarpei adds.

"He knows what he has done. We were crying and you see someone who has cheated us is celebrating. How can I forgive him? Never. Never ever."



**First African World Cup**  
On the 2 July 2010, Ghana had the footballing hopes of a whole continent on their shoulders.

South Africa was the host of Africa's first World Cup but Bafana Bafana were unable to make it past the group stage despite a valiant effort.

The other African teams had all been eliminated at the same point, leaving just the Black Stars in the competition.

"On the way to the game against Uruguay, I think everybody knew we could beat them - I think the whole world was supporting us," left-back Sarpei says.

"The way we play the game: we're playing on the front, we're attacking in front. We try to enjoy the game. When you see Ghana, it's like you're listening to music because the ball is flowing."

Ghana took the lead on the stroke of half-time via a 40-yard thunderbolt from former Portsmouth and Inter Milan midfielder Sulley Muntari.

But Diego Forlan equalised with an

exquisite free-kick and the two teams proceeded to play out in an engrossing contest - undoubtedly one of the best games of the competition - with both teams spurning chances throughout the game.

But it's the final few minutes of the match that will forever live in World Cup infamy.

Ghana won a free-kick on the edge of the box, which was whipped in by Paintsil. In an ensuing goalmouth scramble, Suarez legitimately cleared a shot off the line from captain Steven Appiah - before, seconds later, palming Dominic Adiyiah's header away from goal.

"For me, I thought, 'last man on the line, touch it with his hand, it's supposed to be a goal' - so I was already celebrating that we are through," Paintsil recalls.

"Then I saw it was a penalty and I said, 'What?' I was shouting, 'No, no, take the ball to the centre (circle), take the ball to the centre.'"

Suarez was sent off, leaving the field in tears, whilst the Ghanaian players began to celebrate.

"I think everybody from our side was eliminated at the same point, leaving just the semi-final" because Asamoah Gyan had scored two penalty goals before and he made it look easy," Sarpei says.

Gyan had been talismanic for Ghana in the tournament, leading the line and scoring the winner in the previous round against the United States - a game which had also gone to extra time.

"I was standing there and for me the ball was going into the net and we are going through to the next round," Sarpei recalls.

"Then it hit the crossbar and my first thought was like, 'is this real?' Really? The ball is not into the net? What is happening? What is the problem?"

"And then it was difficult. At this moment, when he didn't score and we had to go to the penalty shootout, the feeling was like, now it will be difficult to go to the next round." Suarez, who had stopped in the tunnel to watch the penalty, was pictured celebrating when Gyan missed - something that still rankles with Paintsil.

"After the penalty was missed you came out and then celebrated like you're on top of the world by hurting people. At least be a professional, feel the pain. Just go to your dressing room and celebrate and then nobody will see it."

Suarez was quoted in the press saying "the hand of God now belongs to me", referencing Diego Maradona's goal against England at the 1986 World Cup.

Ghana would go on to lose via a penalty shootout and with it went Africa's golden opportunity to win a World Cup. In the two tournaments since, no African team has come close to reaching the semi-final stage. The match against Ghana is where Luis Suarez first gained international notoriety. Six months later, he would join Liverpool from Dutch giants Ajax.

Suarez took a gamble that helped his country get into its first semi-final since 1970, but they were beaten 3-2 by the Netherlands without him.



**Our Vision is Real Growth**

**Request for Expression of Interest**

## Affordable Housing Scheme, KARIBIB

QKR Namibia Navachab Gold Mine (Pty) Ltd is an open pit mining operation situated near Karibib in the Erongo Region. The Company runs a 24/7 mining operation with an expected lifespan of approximately 15 years with possibility of further expansion.

Karibib has a housing shortage in comparison to the business needs of the mine and the business development needs of the town in general. The mine, in consultation with the Karibib Town Council, has therefore identified an opportunity to enable interested and suitably qualified parties to participate in a new housing scheme which aims to develop affordable housing for mine employees and Karibib residents in general. Possible partners are sought to provide the following services:

- Land development: Servicing of land in line with municipal regulations and approved plans
- Development: Construction of affordable housing
- Financing: Project Development Finance
- Financing: End user/home owner financing

Preference will be given to an entity or a consortium providing an integrated solution covering all service areas.

Interested parties can request a detailed project profile by sending an e-mail to [tenders@navachab.com.na](mailto:tenders@navachab.com.na) with 'Affordable Housing Scheme' on the subject in order to prepare an Expression of Interest (EOI) Document.

**Closing date for the submission of a full EOI is  
12h00 on Tuesday, 30 June 2020.**

### CALL FOR PUBLIC PARTICIPATION ENVIRONMENTAL IMPACT ASSESSMENT FOR MINERAL EXPLORATION ON EPL 6550

This notice serves to inform all interested and affected parties that an application for an environmental clearance certificate will be launched with the Environmental Commissioner in terms of the Environmental Management Act (No.7 of 2007) and the Environmental Regulations (GN 30 of 2012). The project will comprise of conventional mineral exploration activities on the granted license.

Location: The mineral license is located 24 km Northeast of Karibib and covers farms Eiro.

Name of Proponent: Eliphaz Shaningua Shipanga

### CALL FOR PUBLIC PARTICIPATION ENVIRONMENTAL IMPACT ASSESSMENT FOR MINERAL EXPLORATION ON EPL 7261

This notice serves to inform all interested and affected parties that an application for an environmental clearance certificate will be launched with the Environmental Commissioner in terms of the Environmental Management Act (No.7 of 2007) and the Environmental Regulations (GN 30 of 2012). The project will comprise of conventional mineral exploration activities on the granted license.

Location: The mineral license is located 8 km Northwest of Karibib and covers farms Niewoudt, Ongali, Kranzberg, and Amelb.

Name of Proponent: Esogiel Xamseb



All interested and affected parties are hereby invited to register and submit their comments regarding the proposed project on or before 17/07/2020. Contact details for registration and further information: Mr. N Amutenya.

Email: [eia@impalac.com](mailto:eia@impalac.com), Tel: 0856630598





@whkobserver

WEDNESDAY 15 JULY 2020 | 11

TENDERS/NOTICES

## NOTICE

Take notice that **HARMONIC TOWN PLANNING CONSULTANTS CC, TOWN AND REGIONAL PLANNERS**, on behalf of the owner of the respective erf, intends to apply to the **Rehoboth Town Council** and the **Namibian Planning Advisory Board** for:

### REZONING OF ERF REHOBOTH A 14 FROM 'SINGLE RESIDENTIAL' WITH A DENSITY OF 1:500 TO 'BUSINESS' WITH A BULK OF 1.0

Erf Rehoboth A 14, measure 1190m<sup>2</sup> in extent and is zoned 'Single Residential' with a density of 1:500. In its current density, the owner can erect 1 dwelling unit on the erf. The proposed rezoning to 'Business' with a Bulk 1.0 will enable the owner to operate a clinic, office space and a mini-market.

This will ensure optimum utilization of the erf with mixed uses. Parking to the development will be provided in accordance with the requirements of the Rehoboth Town Planning Scheme.

Further take notice that the plan of the Erf lies for inspection on the town planning notice board at the **Rehoboth Town Council** and at **Harmonic Town Planning Offices, 76B Pasteur Street, Windhoek West**.

Further take notice that any person objecting to the proposed use of the land as set out above may lodge such objection together with the grounds thereof, with the **Rehoboth Town Council** and with the Applicant (**Harmonic Town Planning Consultants CC**) in writing within 14 days of the last publication of this notice (**final date for objections is Friday, 24<sup>th</sup> July 2020**).



Contact: Harold Kisting  
Harmonic Town Planning  
Consultants CC  
Town and Regional Planners  
P.O. Box 3215 Windhoek  
Cell: 081 127 5879  
Fax: 068648401  
Email: hkisting@namibnet.com

T +264-(0)65-220 229  
F +264-(0)65-222 688  
E info@ope.com.na

Erf 3175, Oshakati East  
PO Box 1594, Oshakati, Namibia

www.ope.com.na

**EPC TENDER  
OPE/05/2020**

OSHAKATI PREMIER ELECTRIC REQUEST FOR  
ENGINEERING PROCUREMENT CONSTRUCTION (EPC)  
SERVICES FOR A 5MWAC BULK PV SOLAR PLANT IN  
OSHAKATI

#### Document Fees

**N\$3000.00 (non-refundable)**  
Documents are available in hard copy or can be shared electronically with interested bidders

#### Enquiries (OPE)

Mr. Leon Hanekom (lhanekom@ope.com.na)

Tel: +264-(0)65-220 229

#### Enquiries (OPE)

Mr. Kamati Mbangula (KMBangula@ope.com.na)

Tel: +264-(0)65-220 229

#### Enquiries (Element Consulting)

Mr. Rinus van Rooyen (rinus@element.com.na)

Tel: +264-(0)61-308 416

#### Closing Date

**11 September 2020 | 12h00**

#### Compulsory online Briefing

Interested bidders will be informed on the online platform with regard to the briefing meeting on 22 July 2020 | 09h00

Documents in a sealed envelope clearly marked "TENDER NO OPE/05/2020" addressed to the Chairperson of the Tender Committee, must be placed in the tender box at the Oshakati Premier Electric Head Office or be posted to the Chairperson of the Tender Committee, PO Box 1594, Oshakati, to reach him at the latest by 12:00 on FRIDAY, 11 September 2020. Submission of electronic offers will be done using the online platform, which will be provided to interested bidders.

Please note that no faxed or e-mailed documents as well as documents received after the specified closing date and time will be considered for evaluation.

### CALL FOR PUBLIC PARTICIPATION

#### ENVIRONMENTAL IMPACT ASSESSMENT FOR MINERAL EXPLORATION ACTIVITIES ON EPL 5702

This notice serves to inform all interested and affected parties that an application for the environmental clearance certificate will be launched with the Environmental Commissioner in terms of the Environmental Management Act (No. 7 of 2007) and the Environmental Regulations (GN 30 of 2012). The project will comprise of mineral exploration activities on the tenement.

**Location:** The mineral licence is located 45 km Northeast of Kamanjab and covers farms Khairos, Ohorongo Reserve and Otjitambi.

**Proponent:** Hepburn Rhinlands (Pty) Ltd (Pty)

All interested and affected parties are hereby invited to register and submit their comments regarding the proposed project on or before 27/07/2020. Contact details for registration and further information: **Mr. N Amutenya**. Email: [cia@impalac.com](mailto:cia@impalac.com), Tel: 0856630598



### CALL FOR PUBLIC PARTICIPATION

#### ENVIRONMENTAL IMPACT ASSESSMENT FOR MINING CLAIMS 71896-71900

This notice serves to inform all interested and affected parties that an application for the environmental clearance certificate will be launched with the Environmental Commissioner in terms of the Environmental Management Act (No. 7 of 2007) and the Environmental Regulations (GN 30 of 2012). The project will comprise of dimension stone quarrying activities on mining claims.

**Location:** The project is located 15 km northeast of Karibib on farm Okawayo, Erongo Region.

**Proponent:** Triple Tas Trading Enterprises cc

All interested and affected parties are hereby invited to register and submit their comments regarding the proposed project on or before 27/07/2020. Contact details for registration and further information: **Mr. N Amutenya**. Email: [cia@impalac.com](mailto:cia@impalac.com), Tel: 0856630598



### CALL FOR PUBLIC PARTICIPATION

#### ENVIRONMENTAL IMPACT ASSESSMENT FOR MINERAL EXPLORATION ON EPL 6550

This notice serves to inform all interested and affected parties that an application for an environmental clearance certificate will be launched with the Environmental Commissioner in terms of the Environmental Management Act (No. 7 of 2007) and the Environmental Regulations (GN 30 of 2012). The project will comprise of conventional mineral exploration activities on the granted license.

**Location:** The mineral licence is located 24 km Northeast of Karibib and covers farms Eibro.

**Name of Proponent:** Elphas Shaningua Shipanga

### CALL FOR PUBLIC PARTICIPATION

#### ENVIRONMENTAL IMPACT ASSESSMENT FOR MINERAL EXPLORATION ON EPL 7261

This notice serves to inform all interested and affected parties that an application for an environmental clearance certificate will be launched with the Environmental Commissioner in terms of the Environmental Management Act (No. 7 of 2007) and the Environmental Regulations (GN 30 of 2012). The project will comprise of conventional mineral exploration activities on the granted license.

**Location:** The mineral licence is located 8 km Northwest of Karibib and covers farms Niewoudt, Ongwati, Kranzberg, and Arreib

**Name of Proponent:** Esegid Xamseb



All interested and affected parties are hereby invited to register and submit their comments regarding the proposed project on or before 17/07/2020. Contact details for registration and further information: **Mr. N Amutenya**. Email: [cia@impalac.com](mailto:cia@impalac.com), Tel: 0856630598




#### E-NEWSPAPER

Complete newspaper available on your mobile phone or tablet

**SUBSCRIBE NOW!!**

WINDHOEK OBSERVER

## TENDERS/NOTICES

## NOTICE

Take notice that **HARMONIC TOWN PLANNING CONSULTANTS CC, TOWN AND REGIONAL PLANNERS**, on behalf of the owner of the respective erf, intends to apply to the **Rehoboth Town Council** and the **Namibian Planning Advisory Board** for:

**REZONING OF ERF REHOBOTH A 14 FROM 'SINGLE RESIDENTIAL' WITH A DENSITY OF 1:500 TO 'BUSINESS' WITH A BULK OF 1.0**

Erf Rehoboth A 14, measure 1190m<sup>2</sup> in extent and is zoned 'Single Residential' with a density of 1:500. In its current density, the owner can erect 1 dwelling unit on the erf. The proposed rezoning to 'Business' with a Bulk 1.0 will enable the owner to operate a clinic, office space and a mini-market.

This will ensure optimum utilization of the erf with mixed uses. Parking to the development will be provided in accordance with the requirements of the Rehoboth Town Planning Scheme.

Further take notice that the plan of the Erf lies for inspection on the town planning notice board at the **Rehoboth Town Council** and at **Harmonic Town Planning Offices, 76B Pasteur Street, Windhoek West**.

Further take notice that any person objecting to the proposed use of the land as set out above may lodge such objection together with the grounds thereof, with the **Rehoboth Town Council** and with the Applicant (**Harmonic Town Planning Consultants CC**) in writing within 14 days of the last publication of this notice (final date for objections is Friday, 24<sup>th</sup> July 2020).



Contact: Harold Kisting  
Harmonic Town Planning  
Consultants CC  
Town and Regional Planners  
P.O. Box 3216 Windhoek  
Cell 081 127 5679  
Fax 088646401  
Email: hkisting@harnibnet.com

T +264-(0)65-220 229  
F +264-(0)65-222 688  
E info@ope.com.na

Erf 3175, Oshakati East  
PO Box 1594, Oshakati, Namibia

www.ope.com.na

**EPC TENDER  
OPE/05/2020**

**OSHAKATI PREMIER ELECTRIC REQUEST FOR ENGINEERING PROCUREMENT CONSTRUCTION (EPC) SERVICES FOR A 5MWAC BULK PV SOLAR PLANT IN OSHAKATI**

**Document Fees** NS3000.00 (non-refundable)  
Documents are available in hard copy or can be shared electronically with interested bidders

**Enquiries (OPE)** Mr. Leon Hanekom (lhanekom@ops.com.na)  
Tel: +264-(0)65-220 229

**Enquiries (OPE)** Mr. Kamati Mbangula (KMBangula@ope.com.na)  
Tel: +264-(0)65-220 229

**Enquiries (Element Consulting)** Mr. Rinus van Rooyen (rinus@element.com.na)  
Tel: +264-(0)61-308 416

**Closing Date** 11 September 2020 | 12h00  
**Compulsory online Briefing** Interested bidders will be informed on the online platform with regard to the briefing meeting on 22 July 2020 | 09h00

Documents in a sealed envelope clearly marked "TENDER NO OPE/05/2020" addressed to the Chairperson of the Tender Committee, must be placed in the tender box at the Oshakati Premier Electric Head Office or be posted to the Chairperson of the Tender Committee, PO Box 1594, Oshakati, to reach him at the latest by 12:00 on FRIDAY, 11 September 2020. Submission of electronic offers will be done using the online platform, which will be provided to interested bidders.

Please note that no faxed or e-mailed documents as well as documents received after the specified closing date and time will be considered for evaluation.

## CALL FOR PUBLIC PARTICIPATION

## ENVIRONMENTAL IMPACT ASSESSMENT FOR MINERAL EXPLORATION ACTIVITIES ON EPL 5702

This notice serves to inform all interested and affected parties that an application for the environmental clearance certificate will be launched with the Environmental Commissioner in terms of the Environmental Management Act (No.7 of 2007) and the Environmental Regulations (GN 30 of 2012). The project will comprise of mineral exploration activities on the tenement.

**Location:** The mineral licence is located 45 km Northeast of Kamanjab and covers farms Khairos, Ohorongo Reserve and Ojilambi.

**Proponent:** Hepburn Rhinelands (Pty) Ltd (Pty)

All interested and affected parties are hereby invited to register and submit their comments regarding the proposed project on or before 27/07/2020. Contact details for registration and further information: Mr. N Amutenya. Email: [cia@impalac.com](mailto:cia@impalac.com), Tel: 0856630598



## CALL FOR PUBLIC PARTICIPATION

## ENVIRONMENTAL IMPACT ASSESSMENT FOR MINING CLAIMS 71896-71900

This notice serves to inform all interested and affected parties that an application for the environmental clearance certificate will be launched with the Environmental Commissioner in terms of the Environmental Management Act (No.7 of 2007) and the Environmental Regulations (GN 30 of 2012). The project will comprise of dimension stone quarrying activities on mining claims.

**Location:** The project is located 15 km northeast of Karibib on farm Okawayo, Erongo Region.

**Proponent:** Triple Tas Trading Enterprises cc

All interested and affected parties are hereby invited to register and submit their comments regarding the proposed project on or before 27/07/2020. Contact details for registration and further information: Mr. N Amutenya. Email: [cia@impalac.com](mailto:cia@impalac.com), Tel: 0856630598



## CALL FOR PUBLIC PARTICIPATION

## ENVIRONMENTAL IMPACT ASSESSMENT FOR MINERAL EXPLORATION ON EPL 6550

This notice serves to inform all interested and affected parties that an application for an environmental clearance certificate will be launched with the Environmental Commissioner in terms of the Environmental Management Act (No.7 of 2007) and the Environmental Regulations (GN 30 of 2012). The project will comprise of conventional mineral exploration activities on the granted license.

**Location:** The mineral licence is located 24 km Northeast of Karibib and covers farms Etra

**Name of Proponent:** Elphas Shaningua Shipanga

## CALL FOR PUBLIC PARTICIPATION

## ENVIRONMENTAL IMPACT ASSESSMENT FOR MINERAL EXPLORATION ON EPL 7261

This notice serves to inform all interested and affected parties that an application for an environmental clearance certificate will be launched with the Environmental Commissioner in terms of the Environmental Management Act (No.7 of 2007) and the Environmental Regulations (GN 30 of 2012). The project will comprise of conventional mineral exploration activities on the granted license.

**Location:** The mineral licence is located 8 km Northwest of Karibib and covers farms Niowoud, Ongual, Kranzberg, and Arreib

**Name of Proponent:** Esegel Xamseb



All interested and affected parties are hereby invited to register and submit their comments regarding the proposed project on or before 17/07/2020. Contact details for registration and further information: Mr. N Amutenya. Email: [cia@impalac.com](mailto:cia@impalac.com), Tel: 0856630598



## E-NEWSPAPER

Complete newspaper available on your mobile phone or tablet

**SUBSCRIBE NOW!!**

[subscriptions@observer.com.na](mailto:subscriptions@observer.com.na)

## TENDERS/NOTICES

## NOTICE

Take notice that **HARMONIC TOWN PLANNING CONSULTANTS CC, TOWN AND REGIONAL PLANNERS**, on behalf of the owner of the respective erf, intends to apply to the **Rehoboth Town Council** and the **Namibian Planning Advisory Board** for:

**REZONING OF ERF REHOBOTH A 14 FROM 'SINGLE RESIDENTIAL' WITH A DENSITY OF 1:500 TO 'BUSINESS' WITH A BULK OF 1.0**

Erf Rehoboth A 14, measure 1190m<sup>2</sup> in extent and is zoned 'Single Residential' with a density of 1:500. In its current density, the owner can erect 1 dwelling unit on the erf. The proposed rezoning to 'Business' with a Bulk 1.0 will enable the owner to operate a clinic, office space and a mini-market.

This will ensure optimum utilization of the erf with mixed uses. Parking to the development will be provided in accordance with the requirements of the Rehoboth Town Planning Scheme.

Further take notice that the plan of the Erf lies for inspection on the town planning notice board at the **Rehoboth Town Council** and at **Harmonic Town Planning Offices, 76B Pasteur Street, Windhoek West**.

Further take notice that any person objecting to the proposed use of the land as set out above may lodge such objection together with the grounds thereof, with the **Rehoboth Town Council** and with the Applicant (**Harmonic Town Planning Consultants CC**) in writing within 14 days of the last publication of this notice (**final date for objections is Friday, 24<sup>th</sup> July 2020**).



Contact: Harold Kisting  
**Harmonic Town Planning Consultants CC**  
 Town and Regional Planners  
 P.O. Box 3216 Windhoek  
 Cell 081 127 5879  
 Fax 088646401  
 Email: hkisting@naribnet.com

### CALL FOR PUBLIC PARTICIPATION

#### ENVIRONMENTAL IMPACT ASSESSMENT FOR MINERAL EXPLORATION ON EPL 6550

This notice serves to inform all interested and affected parties that an application for an environmental clearance certificate will be launched with the Environmental Commissioner in terms of the Environmental Management Act (No.7 of 2007) and the Environmental Regulations (GN 30 of 2012). The project will comprise of conventional mineral exploration activities on the granted license.

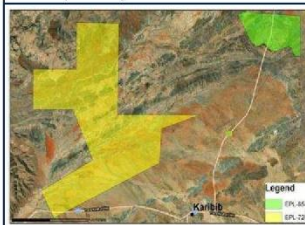
**Location:** The mineral license is located 24 km Northeast of Karibib and covers farms Elro.  
**Name of Proponent:** Elphas Shaningua Shipanga

### CALL FOR PUBLIC PARTICIPATION

#### ENVIRONMENTAL IMPACT ASSESSMENT FOR MINERAL EXPLORATION ON EPL 7261

This notice serves to inform all interested and affected parties that an application for an environmental clearance certificate will be launched with the Environmental Commissioner in terms of the Environmental Management Act (No.7 of 2007) and the Environmental Regulations (GN 30 of 2012). The project will comprise of conventional mineral exploration activities on the granted license.

**Location:** The mineral license is located 8 km Northwest of Karibib and covers farms Newoudi, Ongual, Kranzberg, and Amelb.  
**Name of Proponent:** Esigeli Xamsob



All interested and affected parties are hereby invited to register and submit their comments regarding the proposed project on or before **17/07/2020**. Contact details for registration and further information: **Mr. N Amutenya**, Email: [eia@impalac.com](mailto:eia@impalac.com), Tel: **0856630598**



### E-NEWSPAPER

Complete newspaper available on your mobile phone or tablet

**SUBSCRIBE NOW!**

**WINDHOEK OBSERVER**

### CALL FOR PUBLIC PARTICIPATION

#### ENVIRONMENTAL IMPACT ASSESSMENT FOR MINERAL EXPLORATION ACTIVITIES ON EPL 5702

This notice serves to inform all interested and affected parties that an application for the environmental clearance certificate will be launched with the Environmental Commissioner in terms of the Environmental Management Act (No.7 of 2007) and the Environmental Regulations (GN 30 of 2012). The project will comprise of mineral exploration activities on the tenement.

**Location:** The mineral licence is located 45 km Northeast of Kamanjab and covers farms Khairros, Ohorongo Reserve and Otjitambi.

**Proponent:** Hepburn Rhineland (Pty) Ltd (Pty)

All interested and affected parties are hereby invited to register and submit their comments regarding the proposed project on or before **27/07/2020**. Contact details for registration and further information: **Mr. N Amutenya**, Email: [eia@impalac.com](mailto:eia@impalac.com), Tel: **0856630598**



### CALL FOR PUBLIC PARTICIPATION

#### ENVIRONMENTAL IMPACT ASSESSMENT FOR MINING CLAIMS 71896-71900

This notice serves to inform all interested and affected parties that an application for the environmental clearance certificate will be launched with the Environmental Commissioner in terms of the Environmental Management Act (No.7 of 2007) and the Environmental Regulations (GN 30 of 2012). The project will comprise of dimension stone quarrying activities on mining claims.

**Location:** The project is located 15 km northeast of Karibib on farm Okawayo, Erongo Region.

**Proponent:** Triple Tas Trading Enterprises cc

All interested and affected parties are hereby invited to register and submit their comments regarding the proposed project on or before **27/07/2020**. Contact details for registration and further information: **Mr. N Amutenya**, Email: [eia@impalac.com](mailto:eia@impalac.com), Tel: **0856630598**



T +264-(0)65-220 229  
 F +264-(0)65-222 688  
 E [info@ope.com.na](mailto:info@ope.com.na)

Erf 3175, Oshakati East  
 PO Box 1594, Oshakati, Namibia

[www.ope.com.na](http://www.ope.com.na)



# EPC TENDER

## OPE/05/2020

**OSHAKATI PREMIER ELECTRIC REQUEST FOR ENGINEERING PROCUREMENT CONSTRUCTION (EPC) SERVICES FOR A 5MWAC BULK PV SOLAR PLANT IN OSHAKATI**

#### Document Fees

**N\$3000.00 (non-refundable)**

Documents are available in hard copy or can be shared electronically with interested bidders

#### Enquiries (OPE)

Mr. Leon Hanekom ([lhankom@ope.com.na](mailto:lhankom@ope.com.na))  
 Tel: +264-(0)65-220 229

#### Enquiries (OPE)

Mr. Kamati Mbangula ([KMBangula@ope.com.na](mailto:KMBangula@ope.com.na))  
 Tel: +264-(0)65-220 229

#### Enquiries (Element Consulting)

Mr. Rinus van Rooyen ([rinus@element.com.na](mailto:rinus@element.com.na))  
 Tel: +264-(0)61-308 416

#### Closing Date

**11 September 2020 | 12h00**

#### Compulsory Online Briefing

Interested bidders will be informed on the online platform with regard to the briefing meeting on 22 July 2020 | 09h00

Documents in a sealed envelope clearly marked "TENDER NO OPE/05/2020" addressed to the Chairperson of the Tender Committee, must be placed in the tender box at the Oshakati Premier Electric Head Office or be posted to the Chairperson of the Tender Committee, PO Box 1594, Oshakati, to reach him at the latest by 12:00 on **FRIDAY, 11 September 2020**. Submission of electronic offers will be done using the **online platform**, which will be provided to interested bidders.

Please note that no faxed or e-mailed documents as well as documents received after the specified closing date and time will be considered for evaluation.

## NOTICE

Take notice that HARMONIC TOWN PLANNING CONSULTANTS CC, TOWN AND REGIONAL PLANNERS, on behalf of the owner of the respective erf, intends to apply to the Rehoboth Town Council and the Namibian Planning Advisory Board for:

**REZONING OF ERF REHOBOTH A 14 FROM 'SINGLE RESIDENTIAL' WITH A DENSITY OF 1:500 TO 'BUSINESS' WITH A BULK OF 1.0**

Erf Rehoboth A 14, measure 1190m<sup>2</sup> in extent and is zoned 'Single Residential' with a density of 1:500. In its current density, the owner can erect 1 dwelling unit on the erf. The proposed rezoning to 'Business' with a Bulk 1.0 will enable the owner to operate a clinic, office space and a mini-market.

This will ensure optimum utilization of the erf with mixed uses. Parking to the development will be provided in accordance with the requirements of the Rehoboth Town Planning Scheme.

Further take notice that the plan of the Erf lies for inspection on the town planning notice board at the Rehoboth Town Council and at Harmonic Town Planning Offices, 76B Pasteur Street, Windhoek West.

Further take notice that any person objecting to the proposed use of the land as set out above may lodge such objection together with the grounds thereof, with the Rehoboth Town Council and with the Applicant (Harmonic Town Planning Consultants CC) in writing within 14 days of the last publication of this notice (final date for objections is Friday, 24<sup>th</sup> July 2020).



Contact: Harold Kisting  
Harmonic Town Planning  
Consultants CC  
Town and Regional Planners  
P.O. Box 3276 Windhoek  
Cell 081 127 5879  
Fax 088646401  
Email: hkisting@naminet.net

### CALL FOR PUBLIC PARTICIPATION ENVIRONMENTAL IMPACT ASSESSMENT FOR MINERAL EXPLORATION ON EPL 6550

This notice serves to inform all interested and affected parties that an application for an environmental clearance certificate will be launched with the Environmental Commissioner in terms of the Environmental Management Act (No.7 of 2007) and the Environmental Regulations (GN 30 of 2012). The project will comprise of conventional mineral exploration activities on the granted license.  
Location: The mineral license is located 24 km Northeast of Karibib and covers farms Eilro.  
Name of Proponent: Elphas Shaningwa Shipanga

### CALL FOR PUBLIC PARTICIPATION ENVIRONMENTAL IMPACT ASSESSMENT FOR MINERAL EXPLORATION ON EPL 7261

This notice serves to inform all interested and affected parties that an application for an environmental clearance certificate will be launched with the Environmental Commissioner in terms of the Environmental Management Act (No.7 of 2007) and the Environmental Regulations (GN 30 of 2012). The project will comprise of conventional mineral exploration activities on the granted license.  
Location: The mineral license is located 8 km Northwest of Karibib and covers farms Nowoudi, Onguali, Kranzberg, and Amelb.  
Name of Proponent: Esegel Kamseb



All interested and affected parties are hereby invited to register and submit their comments regarding the proposed project on or before 17/07/2020. Contact details for registration and further information: Mr. N Amutenya.  
Email: eia@impalac.com, Tel: 0856630598



### E-NEWSPAPER

Complete newspaper  
available on your  
mobile phone or tablet

**SUBSCRIBE NOW!**

Windhoek Observer

### CALL FOR PUBLIC PARTICIPATION

#### ENVIRONMENTAL IMPACT ASSESSMENT FOR MINERAL EXPLORATION ACTIVITIES ON EPL 5702

This notice serves to inform all interested and affected parties that an application for the environmental clearance certificate will be launched with the Environmental Commissioner in terms of the Environmental Management Act (No.7 of 2007) and the Environmental Regulations (GN 30 of 2012). The project will comprise of mineral exploration activities on the tenement.

**Location:** The mineral licence is located 45 km Northeast of Kamanjab and covers farms Khairos, Ohorongo Reserve and Ojijambi.  
**Proponent:** Hepburn Rhinelanders (Pty) Ltd (Pty)

All interested and affected parties are hereby invited to register and submit their comments regarding the proposed project on or before 27/07/2020. Contact details for registration and further information: Mr. N Amutenya.  
Email: eia@impalac.com, Tel: 0856630598



### CALL FOR PUBLIC PARTICIPATION

#### ENVIRONMENTAL IMPACT ASSESSMENT FOR MINING CLAIMS 71896-71900

This notice serves to inform all interested and affected parties that an application for the environmental clearance certificate will be launched with the Environmental Commissioner in terms of the Environmental Management Act (No.7 of 2007) and the Environmental Regulations (GN 30 of 2012). The project will comprise of dimension stone quarrying activities on mining claims.

**Location:** The project is located 15 km northeast of Karibib on farm Okawayo, Erongo Region.  
**Proponent:** Triple Tas Trading Enterprises cc

All interested and affected parties are hereby invited to register and submit their comments regarding the proposed project on or before 27/07/2020. Contact details for registration and further information: Mr. N Amutenya.  
Email: eia@impalac.com, Tel: 0856630598



T +264-(0)65-220 229  
F +264-(0)65-222 686  
E info@ope.com.na

Erf 3175, Oshakati East  
PO Box 1594, Oshakati, Namibia

www.ope.com.na



## EPC TENDER OPE/05/2020

OSHAKATI PREMIER ELECTRIC REQUEST FOR  
ENGINEERING PROCUREMENT CONSTRUCTION (EPC)  
SERVICES FOR A 5MWAC BULK PV SOLAR PLANT IN  
OSHAKATI

#### Document Fees

N\$3000.00 ( non-refundable)  
Documents are available in hard copy or can be shared electronically with interested bidders

#### Enquiries (OPE)

Mr. Leon Hanekom (lhanekom@ope.com.na)

Tel: +264-(0)65-220 229

#### Enquiries (OPE)

Mr. Kamati Mbangula (KMBangula@ope.com.na)

Tel: +264-(0)65-220 229

#### Enquiries (Element Consulting)

Mr. Rinus van Rooyen (rinus@element.com.na)

Tel: +264-(0)61-308 416

#### Closing Date

11 September 2020 | 12h00

#### Compulsory online Briefing

Interested bidders will be informed on the online platform with regard to the briefing meeting on 22 July 2020 | 09h00

Documents in a sealed envelope clearly marked "TENDER NO OPE/05/2020" addressed to the Chairperson of the Tender Committee, must be placed in the tender box at the Oshakati Premier Electric Head Office or be posted to the Chairperson of the Tender Committee, PO Box 1594, Oshakati, to reach him at the latest by 12:00 on FRIDAY, 11 September 2020. Submission of electronic offers will be done using the online platform, which will be provided to interested bidders.

Please note that no faxed or e-mailed documents as well as documents received after the specified closing date and time will be considered for evaluation.

@whkbsserver

CAREERS

## 5 different salary negotiation tactics that never go wrong

**N**egotiating a salary increase is often one of the hardest things employees have to do. If you're due for an increase but unsure how to go about it, read these top tips.

To negotiate a higher salary in the beginning of a job is seldom an easy challenge. You may need more or want an additional amount of money to make ends meet. Either way, very few people are excited about doing the asking. This could be because asking for more money is sometimes not so polite. Consider different tips and negotiation factors, such as the ones listed below, about how you can ask for a raise in your salary.

### 1. Start off on the right foot

Negotiating from the first offer is a wise move when you're interviewing for a particular job position. The interviewer will always be prepared for negotiating from the initial amount, and if you do not ask, you will lose potential money right on the interview table. Therefore it is essential that you ask your manager about salary whenever you find the right opportunity.

### 2. Make the request based on future obligations, not the past

A company is likely to pay you more if it expects higher work delivery from you in the future. Hence, if you are asking for a rise in salary, then mention the workload you have to bear in future rather than the extensive work you have done in the past. In this regard, you may also mention your household issues such as kids in college, or mortgage payment.

### 3. Consider the non-salary options

If your company is not yet ready to raise your salary, then think about other compensation options such as a benefits package. You might ask your manager about expanding your leave period, insurance plan, or other gifts.

### 4. Pre-schedule the meeting

If you're planning to discuss the pay rise with your manager, then it's very important that you pre-schedule the meeting with him or her and offer an agenda regarding what will be discussed. That way, your boss won't be caught off guard and get surprised with an immediate call for an increase. Also, if your manager has the agenda points with them for a while, it'll help him or her think about your salary increment and other factors.

### 5. Don't enforce, and be prepared for a 'no'

Usually it's fine if you ask for money. But if you are enforcing your own conditions in terms of quitting the job if your demands are not met, then it could be a serious effect on your professional credibility. Additionally, always be prepared for a refusal. Most of the time bosses are not satisfied with performance and want to test the employee for a longer period of time before offering a higher rank or salary increase. Therefore, you must be careful with your response when denied the salary increment. -property24

CALL FOR REGISTRATION AS INTERESTED AND AFFECTED PARTIES  
**DAMARAN EXPLORATION NAMIBIA (PTY) LTD'S ENVIRONMENTAL ASSESSMENT PROCESS FOR EXPLORATION ACTIVITIES ON EPL 4953, 6535 & 6536, OTJIZONDUPA REGION**

**1. PROJECT SITE AND DESCRIPTION**  
 Damaran Exploration Namibia (Pty) Ltd intends to obtain an Environmental Clearance Certificate (ECC) for the proposed Mineral Prospecting activities on its Exclusive Prospecting Licence (EPL 4953, 6535 & 6536). The three EPLs are situated in Otjozondupua Region and extend across Farms Epopo, Verdun, Okav, Kabussenjama, Okoronjona, Omapanihoek, Harmonie, assevelkrans, Gross Omahoro, Datsendelies and Klatspanger.

**2. PUBLIC PARTICIPATION PROCESS**  
 Moringa Enviro Consultants therefore invite all Interested and Affected Party (I & AP) to register and receive the Project Background Information Document (BID) for their comments and input.

**3. COMMENTS AND QUERIES**  
 Interested and Affected Parties are herewith request to register by writing to us at the address below no later than **30 July 2020**.  
 Please register and direct all comments, queries to:  
 Mr. Isakkar Uahoo, Environmental Assessment Practitioner  
 Email: moringageniro@gmail.com - Cell: +264 81 367 4806

MORINGA ENVIRO CONSULTANTS  
 100% LOCAL OWNERSHIP  
 100% LOCAL EMPLOYMENT  
 100% LOCAL INVESTMENT  
 100% LOCAL SERVICE  
 100% LOCAL SUPPLY

CALL FOR REGISTRATION AS INTERESTED AND AFFECTED PARTIES  
**DAMARAN EXPLORATION NAMIBIA (PTY) LTD'S ENVIRONMENTAL ASSESSMENT PROCESS FOR EXPLORATION ACTIVITIES ON EPL 7246, OTJIZONDUPA REGION**

**1. PROJECT SITE AND DESCRIPTION**  
 Damaran Exploration Namibia (Pty) Ltd intends to obtain an Environmental Clearance Certificate (ECC) for the proposed Mineral Prospecting activities on its Exclusive Prospecting Licence (EPL 7246). EPL 6534 is located in Otjozondupua Region and extend across the following farms: Farms Etindi Onganga, Eremutua Nord Ost, Groot Omawe, Groot Ongarawanda, Klein Okambahe, Klein Okambahe Sud Ost, Otjonger and The Farm.

**2. PUBLIC PARTICIPATION PROCESS**  
 Moringa Enviro Consultants therefore invites all Interested and Affected Party (I & AP) to register and receive the Project Background Information Document (BID) for their comments and input.

**3. COMMENTS AND QUERIES**  
 Interested and Affected Parties are herewith request to register by writing to us at the address below no later than **30 July 2020**.  
 Please register and direct all comments, queries to:  
 Mr. Isakkar Uahoo, Environmental Assessment Practitioner  
 Email: moringageniro@gmail.com - Cell: +264 81 367 4806

MORINGA ENVIRO CONSULTANTS  
 100% LOCAL OWNERSHIP  
 100% LOCAL EMPLOYMENT  
 100% LOCAL INVESTMENT  
 100% LOCAL SERVICE  
 100% LOCAL SUPPLY

CALL FOR REGISTRATION AS INTERESTED AND AFFECTED PARTIES  
**DAMARAN EXPLORATION NAMIBIA (PTY) LTD'S ENVIRONMENTAL ASSESSMENT PROCESS FOR EXPLORATION ACTIVITIES ON EPL 4953, 6535 & 6536, OTJIZONDUPA REGION**

**1. PROJECT SITE AND DESCRIPTION**  
 Damaran Exploration Namibia (Pty) Ltd intends to obtain an Environmental Clearance Certificate (ECC) for the proposed Mineral Prospecting activities on its Exclusive Prospecting Licence (EPL 4953, 6535 & 6536). The three EPLs are situated in Otjozondupua Region and extend across Farms Epopo, Verdun, Okav, Kabussenjama, Okoronjona, Omapanihoek, Harmonie, assevelkrans, Gross Omahoro, Datsendelies and Klatspanger.

**2. PUBLIC PARTICIPATION PROCESS**  
 Moringa Enviro Consultants therefore invite all Interested and Affected Party (I & AP) to register and receive the Project Background Information Document (BID) for their comments and input.

**3. COMMENTS AND QUERIES**  
 Interested and Affected Parties are herewith request to register by writing to us at the address below no later than **30 July 2020**.  
 Please register and direct all comments, queries to:  
 Mr. Isakkar Uahoo, Environmental Assessment Practitioner  
 Email: moringageniro@gmail.com - Cell: +264 81 367 4806

MORINGA ENVIRO CONSULTANTS  
 100% LOCAL OWNERSHIP  
 100% LOCAL EMPLOYMENT  
 100% LOCAL INVESTMENT  
 100% LOCAL SERVICE  
 100% LOCAL SUPPLY

**CALL FOR PUBLIC PARTICIPATION ENVIRONMENTAL IMPACT ASSESSMENT FOR MINERAL EXPLORATION ON EPL 6550**

This notice serves to inform all interested and affected parties that an application for an environmental clearance certificate will be launched with the Environmental Commissioner in terms of the Environmental Management Act (No.7 of 2007) and the Environmental Regulations (GN 30 of 2012). The project will comprise of conventional mineral exploration activities on the granted license.

**Location:** The mineral license is located 24 km Northeast of Karibib and covers farms Etiro.

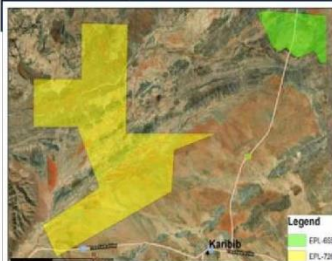
**Name of Proponent:** Elphas Shaniqua Shipanga

**CALL FOR PUBLIC PARTICIPATION ENVIRONMENTAL IMPACT ASSESSMENT FOR MINERAL EXPLORATION ON EPL 7261**

This notice serves to inform all interested and affected parties that an application for an environmental clearance certificate will be launched with the Environmental Commissioner in terms of the Environmental Management Act (No.7 of 2007) and the Environmental Regulations (GN 30 of 2012). The project will comprise of conventional mineral exploration activities on the granted license.

**Location:** The mineral license is located 8 km Northwest of Karibib and covers farms Niewoudt, Onguati, Kranzberg, and Amelb.

**Name of Proponent:** Esegiel Xameeb



All interested and affected parties are hereby invited to register and submit their comments regarding the proposed project on or before **17/07/2020**. Contact details for registration and further information: Mr. N Amutonyia.  
 Email: eia@impalac.com, Tel: 0656630596



## Tertiary Programmes Study Opportunities

### Certificate Local Government Studies (CLGS), 1 year course - NQF level: 4

**Aim:**  
 This Programme aims to provide support for the decentralisation and democratisation process in Namibia and to support capacity building initiatives of regional councils and local authorities through a tailor-made academic programme.

**Who May Apply:**  
 Officials working in local and regional government offices and municipalities as well as members of the general public who have an interest in either taking up a career in local government administration or enhancing a career in this field may apply for this programme.

**Admission Requirements:**

- Gr 12 certificate with 20 points in 6 subjects plus E symbol in English or
- Gr 10 certificate with 25 points, E symbol in English plus 3 years of relevant work experience.

### Certificate in Education for Development (CED), 1 year course - NQF level: 4

**Aim:**  
 This programme aims to provide students with theoretical knowledge and practical skills to increase their effectiveness as community workers. It will also prepare students as practitioners in aspects of adult education at community level. The programme prepares certificate holders for admission into the Diploma Programme (DED).

**Who May Apply:**  
 Community development workers such as District Literacy Organisers, Literacy Promoters, Agricultural Extension Workers, Health Educators, Project Managers and any other non-formal Educators working in government ministries, non-governmental organisations and the private sector.

**Admission Requirements:**

- Grade 12 (20 points in six subjects)
- E symbol in English OR
- Grade 10 (25 points in six subjects)
- E symbol in English
- 3 years relevant working experience

### Diploma in Education for Development (DED), 1 year course - NQF LEVEL: 5

**Aim:**  
 The Diploma in Education for Development aims to provide an opportunity for graduates of the Certificate in Education for Development (CED) and interested members of the public to further their studies in this field of community development and related fields.

**Who May Apply:**  
 Anyone who has obtained the Certificate in Education for Development (CED) offered by NAMCOL, or UNISA as well as interested members of the public.

**ADMISSION REQUIREMENTS:**

- Grade 12 (22 points in 5 subjects)
- E symbol in English OR
- NAMCOL or UNISA CED qualification

### Diploma in Business and Entrepreneurship (DBE), 1 year course - NQF LEVEL: 5

**Aim:**  
 The programme is aimed at producing business leaders who are innovative in creating opportunities for economic growth.

**Who May Apply:**  
 Entrepreneurs, mid-career professionals and any one aiming to start a business that need skills and guidance in establishing and running a business.

**ADMISSION REQUIREMENTS:**  
 The basic entry requirement to the Diploma is the Certificate in Business and Entrepreneurship NQF Level 5. Any other equivalent qualification from a recognised institution of higher learning maybe considered for entry into this qualification.



**APPLICATIONS OPEN UNTIL 14 AUGUST 2020 APPLY NOW!**