

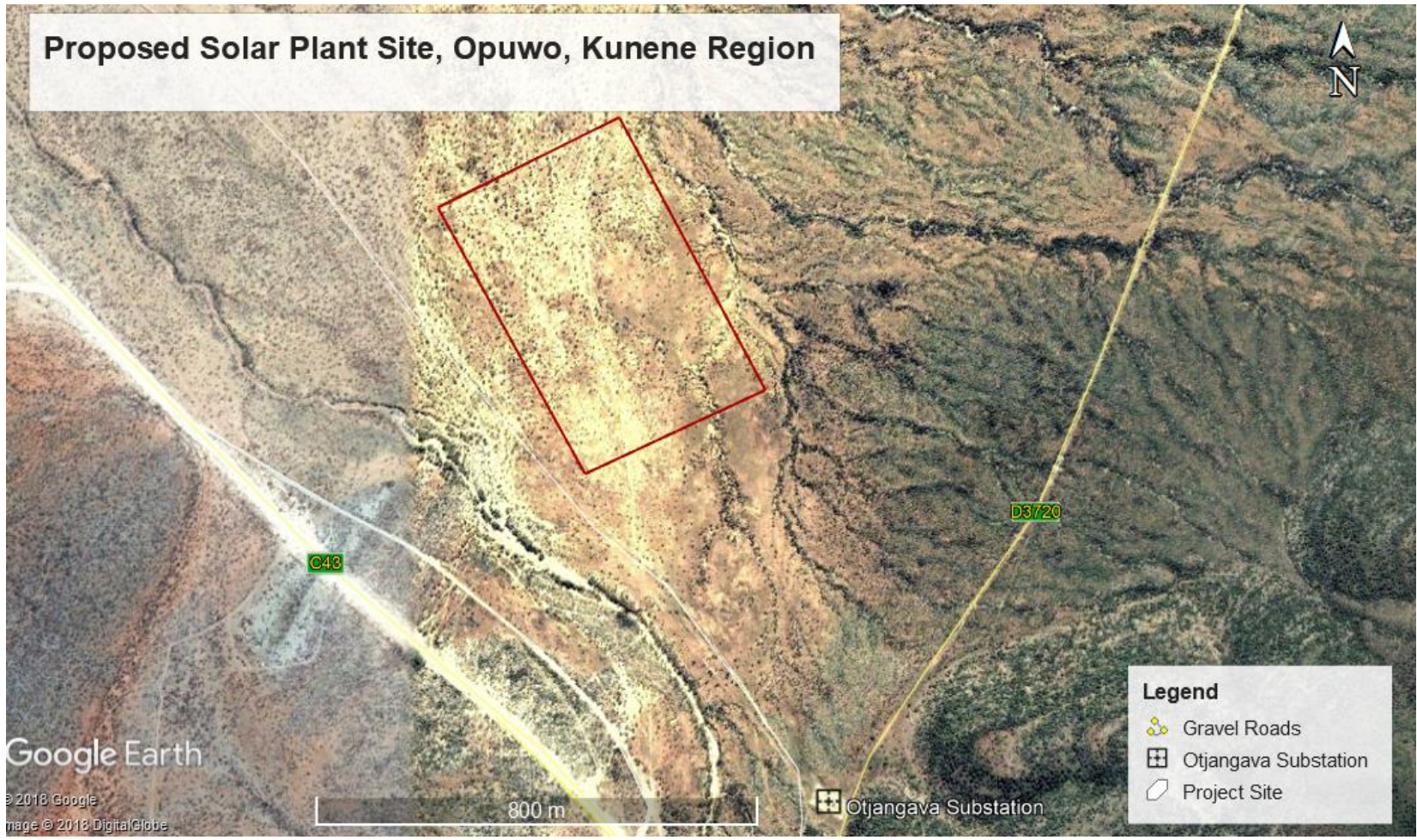
1.2 Project Location

The proposed 5 MW Photovoltaic solar power plant by Otjongava Energy (Pty) Ltd will be constructed at Oukongo–Okomize Village on 20 Ha parcel of land and is adjacent to the NamPower substation, located approximately 5 km North of Opuwo, when using the C43 from Opuwo to Okangwati, Epupa Constituency, Kunene Region. Refer to the locality map for the proposed development in Figure 1. The proposed solar power plant will be connected to the national grid via a 66 kV overhead power line to the nearby Otjongava electricity substation. Access to the site will be through existing roads as shown in Fig. 1. The GPS coordinates of the proposed solar power plant for Otjongava Energy (Pty) Ltd are shown in the following tables:

Table 1.1: GPS coordinates of the proposed location of the 5 MW Solar PV Power Plant- Otjongava Energy (Pty) Ltd.

Point	Northing	Easting
A	18° 0'50.67"	13°51'21.98"
B	18° 0'45.76"	13°51'33.05"
C	18° 0'29.84"	13°51'24.12"
D	18° 0'35.10"	13°51'12.98"
Otjangava Substation	18° 1'9.80"	13°51'36.95"

Proposed Solar Plant Site, Opuwo, Kunene Region



Legend

- Gravel Roads
- Otjangava Substation
- Project Site

Google Earth

© 2018 Google
Image © 2018 DigitalGlobe

800 m

Otjangava Substation

Proposed Solar Plant Site, Opuwo, Kunene Region

