

**GOBLENZ WATER SUPPLY SCHEME**

**UPDATED ENVIRONMENTAL MANAGEMENT PLAN**

**Date:**

June 2020

**Prepared by:**

NamWater, Private Bag 13389, Windhoek, Namibia

Contact Person: F. Aupokolo

Tel: +264-6171 2095

Email: [AupokoloF@namwater.com.na](mailto:AupokoloF@namwater.com.na)

## Table of Contents

LIST OF ABBREVIATIONS .....	III
1. PURPOSE OF THE EMP .....	4
2. INTRODUCTION .....	5
3. GOBLENZ INFRASTRUCTURE .....	<b>ERROR! BOOKMARK NOT DEFINED.</b>
3.1 Water Source .....	6
3.2 Water Quality and Disinfection .....	6
3.3 Pipe Work .....	6
3.4 Reservoirs .....	6
3.5 Power Supply and Control System .....	6
3.6 Scheme Operation .....	7
3.7 Maintenance.....	7
3.8 Pumps.....	7
3.9 Air Valves.....	7
3.10 Pressure Gauges and Transducers.....	7
3.11 Reservoirs.....	7
3.12 Pipe Breaks/leaks.....	7
4. BRIEF DESCRIPTION OF THE RECEIVING ENVIRONMENT .....	10
4.1 Climate.....	10
4.1.1 Precipitation .....	10
4.1.2 Temperature .....	10
4.2 Geology.....	10
4.3 Natural Flora .....	10
4.4 Fauna.....	10
5. RESPONSIBLE PARTIES .....	11
6. ENVIRONMENTAL MANAGEMENT PLAN .....	12
7. MANAGEMENT ACTIONS .....	13
7.1 Operation and Maintenance phase of the Goblentz Water Pipeline Scheme .....	13
8.1.1 Introduction .....	13
7.2 Maintenance Procedures.....	15
7.3 Facility Management and Operations .....	15
7.4 Routine Maintenance and Repairs .....	15
7.5 Environmental Awareness.....	15
7.6 Waste and Pollution Management.....	15
7.6.1 Waste and Pollution Prevention .....	15
7.6.2 Hazardous Materials .....	16
7.6.3 Noise Management.....	16
7.7 Health and Safety.....	16
8. SITE CLOSURE AND REHABILITATION.....	18

9. NAMWATER ENVIRONMENTAL CODE OF CONDUCT .....	19
10. REFERENCES .....	24
ANNEXURE 1: GRIEVANCE PROCEDURE AND REGISTRATION FORM .....	25

## LIST OF ABBREVIATIONS

<b>AIDS</b>	Acquired Immune Deficiency Syndrome
<b>CoC</b>	Code of Conduct
<b>DEA</b>	Directorate of Environmental Affairs
<b>EMA</b>	Environmental Management Act
<b>EMP</b>	Environmental Management Plan
<b>HIV</b>	Human Immunodeficiency Virus
<b>I&amp;AP</b>	Interested and Affected Parties
<b>MET</b>	Ministry of Environment and Tourism
<b>NEM</b>	NamWater Environmental Manager
<b>MSDS</b>	Material Safety Data Sheet
<b>NWQG</b>	Namibian Water Quality Guidelines
<b>NWQS</b>	Namibian Water Quality Standards
<b>STI's</b>	Sexually Transmitted Infections

## **1. PURPOSE OF THE EMP**

This Environmental Management Plan (EMP) has been compiled and updated for the management of potential environmental impacts during the operation, and decommissioning phases of the existing Goblenz Water Supply Scheme. Best practice is proposed for the generic issues of construction management and supervision as well as the on-going management and operation of the water supply scheme.

In terms of the Environmental Assessment Policy of 1994 and the Environmental Management (Act No 7 of 2007) (EMA), the activities required for the construction of the proposed project requires authorization from the Directorate of Environmental Affairs at the Ministry of Environmental and Tourism (MET: DEA).

An Environmental Clearance Certificate (ECC) was originally issued in 2017 and this EMP serves as an application for the renewal of the ECC. The EMP is for an existing scheme and it is therefore only for the operation and maintenance of the scheme.

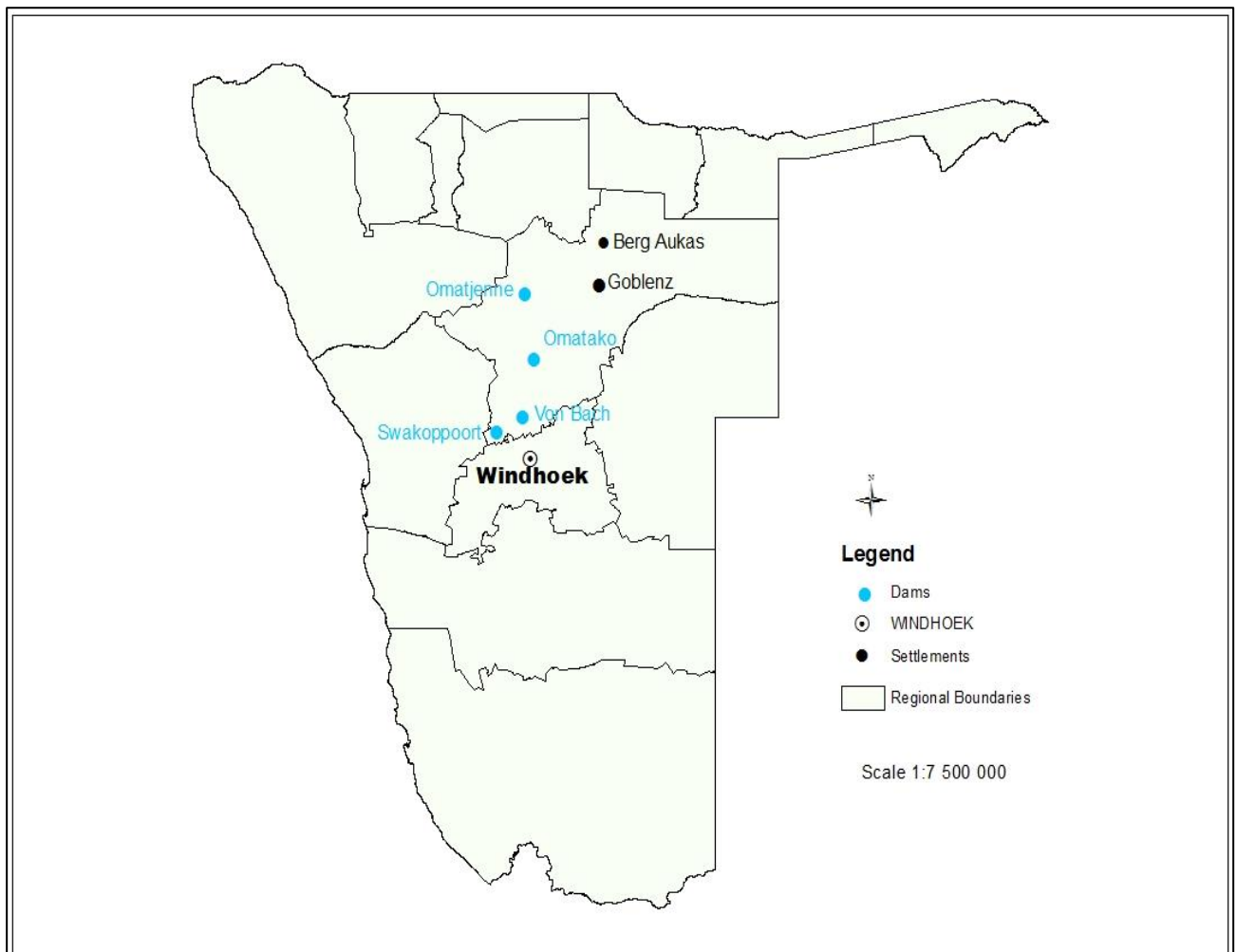
## 2. INTRODUCTION

Goblenz is a groundwater scheme, which supplies potable water from five boreholes to the settlement of Goblenz. In 2009/10, 76 101 m<sup>3</sup> of potable water were sold from this scheme. Goblenz – Okakarara is a pipeline scheme, which distributes the groundwater abstracted from the Goblenz boreholes to serve the rural communities en route to Okakarara.

This scheme is the oldest bulk water supply scheme in the Waterberg Water Supply Area (WWSA), having been constructed in the 1970s (Alexander and Becker, 2003). This scheme was originally constructed as an interim supply measure to Okakarara, until the Berg Aukas (– Central Reservoir) – Okakarara Regional State Water Supply Scheme was completed, which was in turn also intended as an interim measure to supply Okakarara, until completion of the link from the ENWC under the Waterberg – Okakarara Regional State Water Supply Scheme (DWA, 1987).

The location of Goblenz is depicted in **Figure 1**.

The EMP is for an existing scheme and it is therefore only for the operation and maintenance of the scheme.



**Figure 1: Goblenz Location Map**

## 3. GOBLENZ INFRASTRUCTURE

### 3.1 Water Source

Five boreholes of varying depth are used to supply groundwater into the Goblenz Reservoir, being the “new” boreholes established by the DWA in 1996. Details of these boreholes are provided in Table 8.1 below. Apart from these five NamWater boreholes, 11 rural production boreholes are located within a 30 km radius of Goblenz, and the current utilisation of the groundwater source is not considered significant (NamWater, 2000). A number of test boreholes are also located in the vicinity, which NamWater used for test pumping to investigate the recharge of the Goblenz aquifer, but these are not currently used for production.

A schematic layout of the existing infrastructure is indicated in **Figure 2** below.

### 3.2 Water Quality and Disinfection

The quality of water supplied to Goblenz was evaluated for compliance with the NWQS and the NWQG. The quality of the water falls in Group B guidelines (Appendix).

The dosing system provides chlorine (using standard 68 kg capacity bottles) for water after the booster pumps in the pressure line before the elevated water reservoir.

### 3.3 Pipe Work

The pipeline between Goblenz and Okakarara consists of asbestos cement pipes of 200 mm constant inner diameter throughout, with varying pressure classes, for a total length of 96 km. Ombinda is located at chainage 56 km, as measured from Goblenz. The first 16 km of the pipeline (as from Goblenz) are Class 24 (120 m), the next 11 km are Class 18 (90 m), with the next 29 km to Ombinda Class 12 (60 m). Downstream of Ombinda the pressure class increases again, to Class 24 for the first 14 km, decreasing to Class 18 for the next 9 km with the last 17 km to Okakarara being Class 12.

Several small pipelines are connected to the Goblenz – Ombinda Pipeline, which supply water a short distance to the north and south of this pipeline. A 11.5 km long, 63 mm diameter Class 6 uPVC pipeline to the south east, which runs towards Okamatapati, is the largest off-take.

### 3.4 Reservoirs

Goblenz water supply scheme has a 560 m<sup>3</sup> circular concrete ground level reservoir, a 58 m<sup>3</sup> (nominal volume) sectional steel panel elevated reservoir and a 100 m<sup>3</sup> circular concrete ground level reservoir at Ombinda. The ground reservoir features a top inlet and bottom outlet. Please see **Figures 3** and **4** for orientation.

### 3.5 Power Supply and Control System

Submersible pumps are installed and are manually operated at all the five boreholes. The pumps provide borehole water to the Goblenz Ground Level Reservoir before the Goblenz booster pump installation. All pumps operate in parallel with all five submersible pump installations at each borehole.

The main power supply to the pump installations is via a dedicated 33 000/400 V, 25-kVA pole mounted transformer situated just outside the pump installation yard. The pump installations are supplied via a 40 A TP circuit breaker. The transformer is the property of CENORED Electricity and they are responsible for its maintenance costs.

The control panel is designed so the boreholes pumps can be started and stopped manually or automatically based on the delivery line pressure. A Moeller PS4-201-MM1 PLC is installed in the control panel.

The main power supply to the pump station is via an 11 000/400 V, 50 kVA pole mounted transformer situated about 100 m down the road from the pump station yard. The transformer also supplies a number of local houses. The pump station is supplied via a 60 A TP circuit breaker on the outside wall of the pump station building.

### **3.6 Scheme Operation**

The supply pressure at Goblenz is insufficient, which means that water often does not reach Ombinda. In order to alleviate this problem, the bypass valve at Ombinda is often opened such that water pumped from Okakarara can supply the consumers to the north of Ombinda which are not reached by the supply from Goblenz.

Consequently, consumers north east of Ombinda are generally supplied from Goblenz, whilst consumers to the south west of Ombinda are generally supplied from Okakarara. During the field assessments, it was confirmed that the isolating valve on the inlet to the Ombinda Reservoir is closed, such that the reservoir is not in use. For this reason, this scheme is dealt with as the Goblenz – Ombinda Scheme..

### **3.7 Maintenance**

Maintenance is done by a permanent NamWater team.

### **3.8 Pumps**

All motors bearings should be lubricated with a high-temperature lithium-based grease after 3000 hours.

If a pump/s were out of operation for six months, lubrication is required before service commence on all motor bearings.

### **3.9 Air Valves**

The valves must be opened monthly to be descaled and cleaned to ensure effective operation. The service intervals will depend on the severity of the conditions.

### **3.10 Pressure Gauges and Transducers**

The gauge cocks must be turned monthly to bleed-off air and ensure accurate readings. Turning prevents scale accumulation which prevents the gauge cock from functioning. The operational or service intervals will depend on the severity of the conditions.

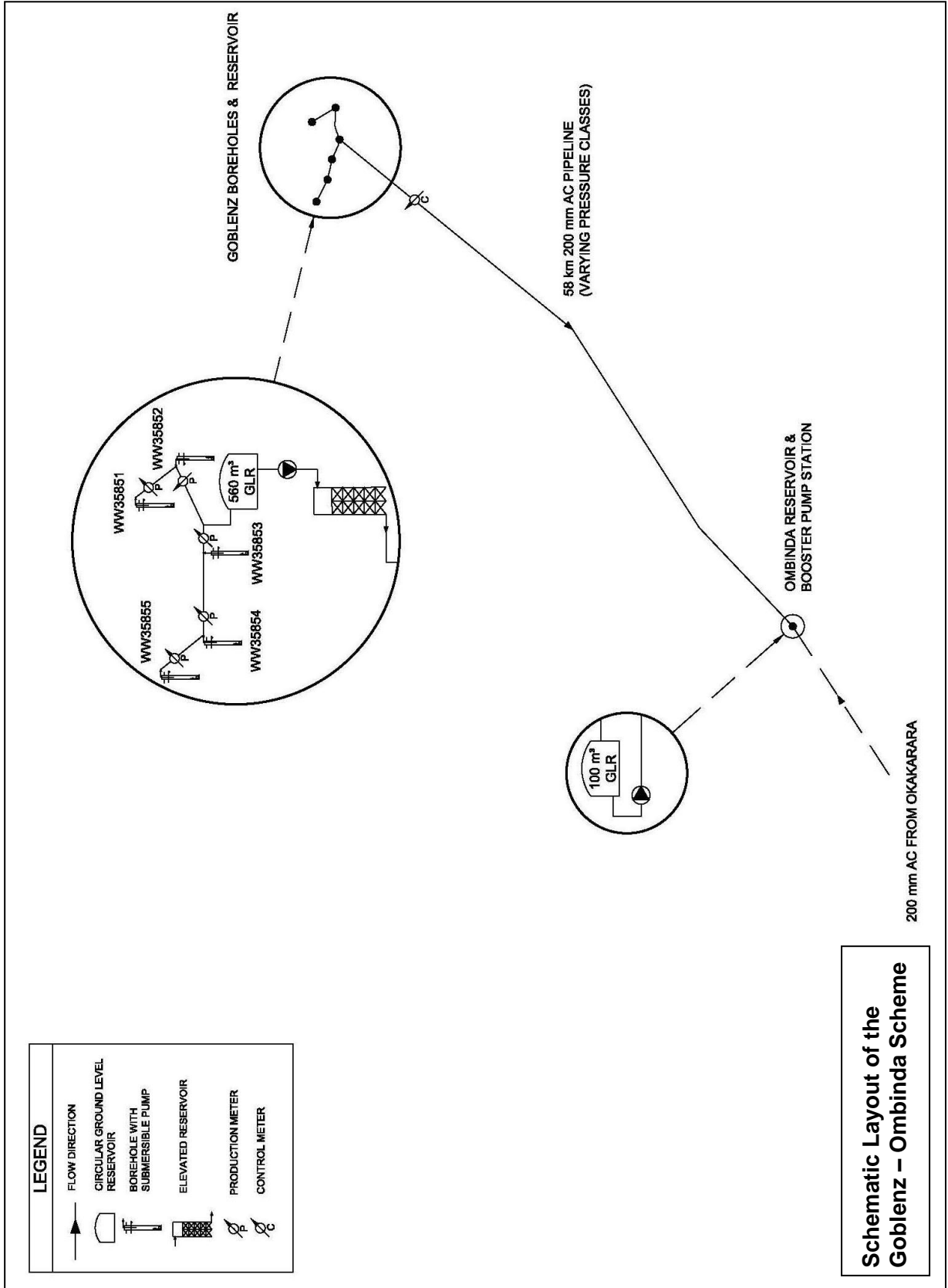
### **3.11 Reservoirs**

The reservoirs should be checked for leaks and other damages on a monthly basis. If leaks are detected, it should be fixed immediately.

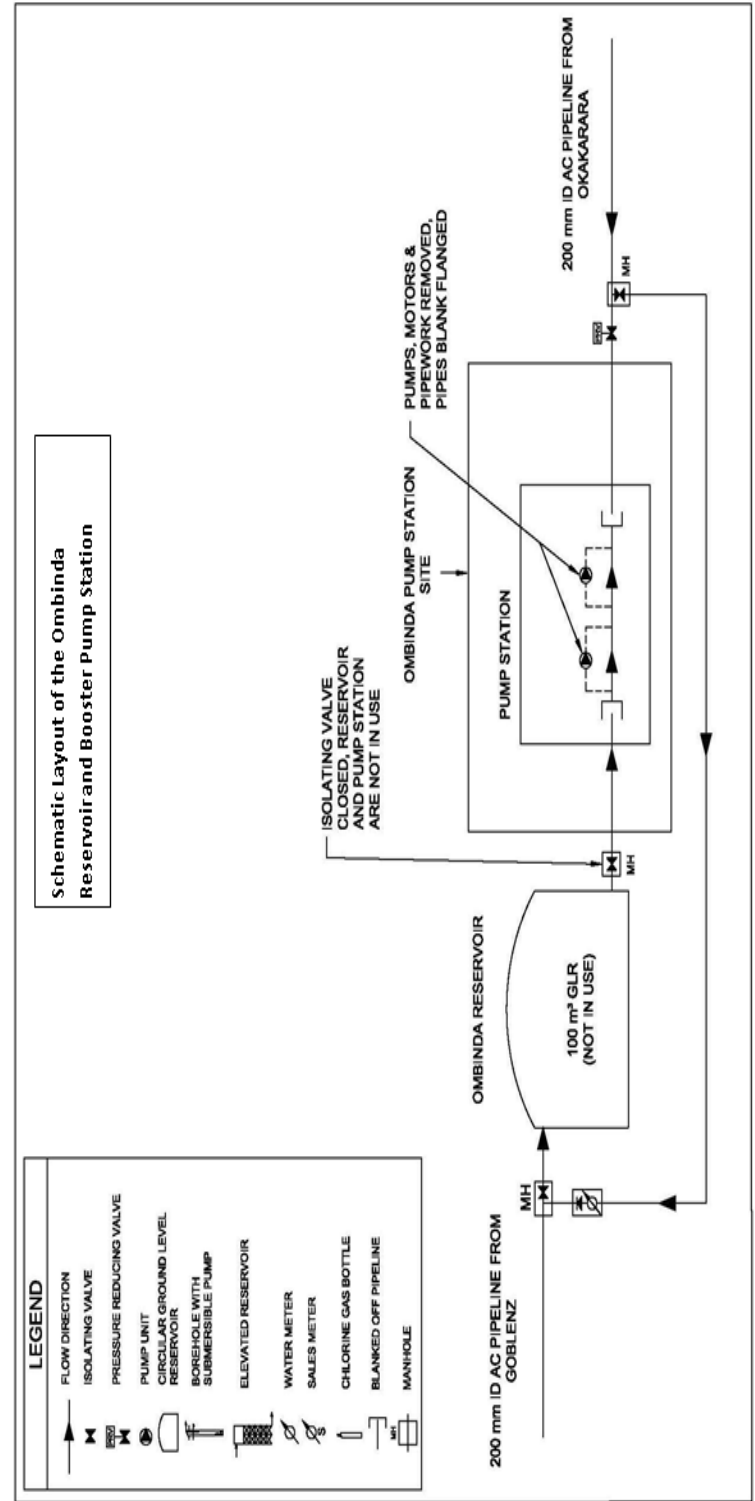
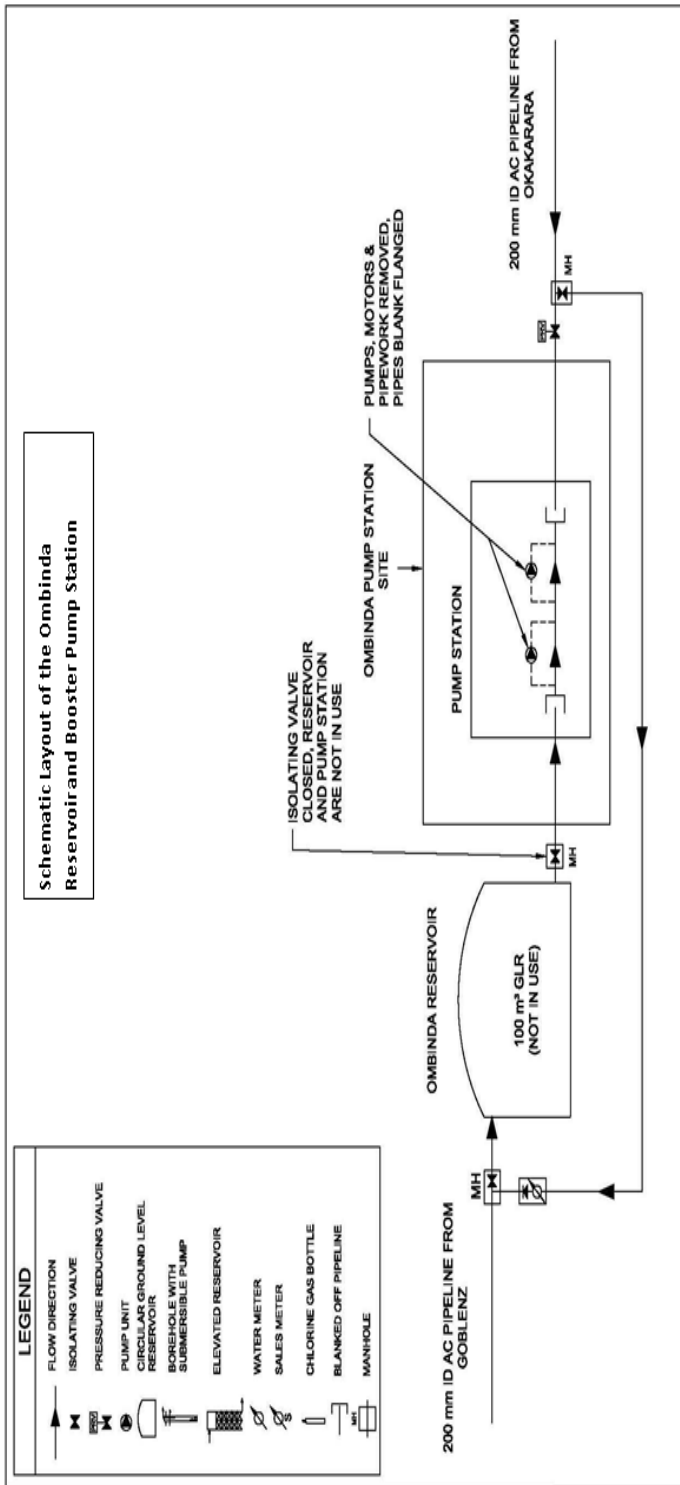
### **3.12 Pipe Breaks/leaks**

Monthly monitor of pipes should be done to avoid wastage of water in an event a major pipe break. The pipeline corridor for maintenance work is 10 m by 5 m.





**Figure 2:** Goblenz – Ombinda Scheme Schematic



**Figure 3: Ombinda Reservoir and Booster Pump Station**      **Figure 4: Goblenz Boreholes & Reservoir**

## 4. BRIEF DESCRIPTION OF THE RECEIVING ENVIRONMENT

The baseline description provided below focuses on the receiving environment:

### 4.1 Climate

Goblenz has an extreme climate most times of the year with high temperatures especially during the rainy season and low temperature during the dry winter season.

#### 4.1.1 Precipitation

Mean annual rainfall varies between about 400 mm in the central low areas of the basin and 650 mm/year in the Otavi Mountains (Figure 2.1). Due to the location near the Tropic of Capricorn, the study area has a subtropical summer rainfall regime. The rainy season starts in October/November and ends in April/May; highest rainfall is observed in February (Mendelsohn *et.al*, 2002). Goblenz experience very low rainfall, with an annual average rainfall of 128 mm.

#### 4.1.2 Temperature

The area receives between 150 and 250 mm of rain per annum. Potential evaporation is as high as 3 800 mm in the southeastern part of the basin, and in normal years little or no local runoff is generated (Weismiller, *et al.*, 2012).

### 4.2 Geology

Paragneisses and granites of the Grootfontein complex are the oldest rocks in the Goblenz area. Overlying this complex, the Precambrian Damara Sequence has been deposited in a basin between the Kongo and the Kalahari cratons. The sequence was folded and metamorphosed during the Pan African orogeny, forming the most extended type of pre-Kalahari rocks in the area. The Northern and the Central represent various depositional environments and have undergone different degrees of metamorphism. The lowest unit of the Damara Sequence is formed by the basal Nossib Group, mainly composed of quartzite, conglomerate and schist in both the Northern and the Central Zone (Külls, 2000).

A prominent feature of the region is a major outcrop of the Etjo Formation: the Waterberg. The Etjo sandstone preserved the crops out in an area south of the Waterberg Fault. Along it, folded rocks of the Damara Sequence, probably initially also overlain by Mesozoic sediments, have been thrust over a southern block (Waterberg Thrust Fault). Due to the contrasting hydraulic properties of the Etjo sandstone and the underlying Omingonde Formation, and due to the good permeability of the Etjo sandstone, it is a fresh groundwater aquifer (Külls, 2000). The occurrence of basalt in the Etjo sandstone is documented from boreholes drilled near the farms Rimini and Hairabib. Dykes have intruded rocks of the Damara Sequence north of the Waterberg.

### 4.3 Natural Flora

The Goblenz area has very poor tree richness, with a presence of a few endemics such as *Pteronias*, camelthorn (*Acacia erioloba*), shepherd's tree (*Boscia albitrunca*), blackthorn (*Leucophaera bainesii*), grey bush (*Calicorema capitata*), sweetthorn (*Acacia karoo*) and treethorn (*Rhigozum trichotomum*) (Goldblatt *et al.*, 1998).

### 4.4 Fauna

Goblenz hosts a variety of large to small fauna, ranging from, Duiker (*Sylvicapra grimmia*), Springbok (*Antidorcas marsupialis*), Kudu (*Tragelaphus strepsiceros*), Caracal (*Caracal caracal damarensis*), Steenbok (*Raphicerus campestris*), black-backed jackal (*Canis mesomelas*) to Klipspringer (*Oreotragus oreotragus*). Zebra (*Equus zebra hartmannae*) are also widely scattered

across the area in addition to Red Hartebeest (*Alcelaphus buselaphus caama*) and Gemsbuck (*Oryx gazella*) (Barnard et al., 1997).

## 5. RESPONSIBLE PARTIES

NamWater's Environmental Manager is primarily responsible for the implementation of the EMP during the operational and maintenance phases.

### 5.1 NamWater

NamWater, as the implementing agency, is responsible for:

- Ensuring that the objects of the EMP are being obtained;
- Ensuring that all environmental impacts are managed according to the environmental principles of avoiding, minimizing, mitigating and rehabilitation. This will be achieved by successful implementation of the EMP;
- Ensuring that appropriate monitoring and compliance auditing are executed;
- Ensuring that the environment is rehabilitated to its natural state as far as possible.

NamWater shall ensure that all employees attend an Environmental, Awareness Training Course. This course shall be structured to ensure that attendees:

- Become familiar with the environmental controls contained in the EMP;
- Are made aware of the need to conserve water and minimise waste;
- Are made aware of NamWater's Code of Conduct;
- Are aware that a copy of the EMP is readily available at the plant and that all staff are aware of the location and have access to the document;
- Are informed that employee information posters, outlining the environmental "do's" and "don'ts" (as per the environmental awareness training course) will be placed at prominent locations throughout the site.

## **6. ENVIRONMENTAL MANAGEMENT PLAN**

An Environmental Management Plans (EMP) is an important tool focusing on the management actions that are required to ensure environmental compliance of a particular project.

EMP implementation is a cyclical process that converts mitigation measures into actions and through cyclical monitoring, auditing, review and corrective action, ensures conformance with stated EMP aims and objectives. Monitoring and auditing, feedback for continual improvement ensures that environmental performance has been provided and corrective action is taken for an effective EMP.

The main aim of this EMP is to ensure that the project complies with the goals of the Namibian Environmental Management Act (No. 7 of 2007); and, more specifically, to provide a framework for implementing the management actions as described in the EMP for the operational and maintenance phases of the scheme. Best practice is proposed for the operation of the scheme.

There are some environmental impacts that cannot be avoided. These environmental impacts require mitigation, and in order to mitigate against these impacts an EMP is required. The EMP aims to ensure best practises are implemented and environmental degradation is avoided through appropriate environmental protection, adherence to legal requirements and maintaining good community relationships.

MET indicated that EMP's for existing operations are sufficient.

The project activities are grouped according to the different operational processes and stages. Most of the impacts can be reduced through good housekeeping.

## **7. MANAGEMENT ACTIONS**

### **7.1 Operation and Maintenance phase of the Goblenz Water Pipeline Scheme**

#### **8.1.1 Introduction**

The Operational Phase Section relates to the management and mitigation measures required to ensure that the continuation of the bulk water supply network and the maintenance of the infrastructure is operated in a manner that demonstrates responsible, precautionary environmental management.

The EMP will address specific areas of concern in terms of the long-term environmental management of the affected environment and is intended to serve as a guide to the on-going management of the water supply scheme site as well as the affected environment. The EMP will therefore aim to provide NamWater with the necessary tools to ensure that the potential impacts on the natural environment of the site during the operation of the water supply scheme are minimised. Moreover, it will aim to ensure that the infrastructure is operated and maintained according to Best Practice, in an environmentally sensitive and sustainable manner, and that the operation of the infrastructure does not result in reasonably avoidable environmental impacts.

**Table 2: Operation and Maintenance Phase Management Table**

Issue	Objective	Strategy	Actions	Time frame
Maintenance and emergency procedures	To ensure correct procedures are in place to avoid environmental impacts associated with maintenance activities as well as proactive intervention to avoid, and if required, to respond to emergencies	<ul style="list-style-type: none"> <li>• Establish environmentally sensitive and technically sound maintenance procedures as well as reporting structures.</li> <li>• Compile a staff competency assessment and training programme.</li> <li>• Establish emergency procedures to ensure appropriate response and minimise potential risk to the biophysical and social environment.</li> </ul>	<ol style="list-style-type: none"> <li>1. Establish regular reporting procedures on maintenance</li> <li>2. Undertake regular inspection and maintenance of all infrastructure to ensure in working order and to assess damaged / deficient equipment, as per the O&amp;M Manual.</li> <li>3. Review, and if necessary, revise maintenance manual.</li> <li>4. Establish emergency procedures guidelines for the blockage/failure, flooding, contaminant removal and disinfection, power failure and fire of the scheme.</li> <li>5. Implement the response procedures when emergency incident occurs.</li> <li>6. Complete the incident report checklist in the case of emergency and keep with monitoring records for submission.</li> <li>7. Undertake annual education course for all operational staff.</li> <li>8. Review, and if necessary revise emergency manual.</li> </ol>	<p>Bi-monthly for the lifespan of infrastructure as per the maintenance manual.</p> <p>Bi-annually for lifespan of works.</p> <p>When emergency incident occurs.</p> <p>Emergency incident</p> <p>Annually for lifespan of operation.</p> <p>Annually for lifespan of operation</p> <p>Annually for lifespan of operation</p>

## **7.2 Maintenance Procedures**

The optimal operation and effective maintenance of all the scheme components is important in protecting the environment and ensuring that resources are not wasted and environmental incidents arising out of equipment or infrastructure failures, are avoided. Operation and Maintenance Manuals are available for the Omatako Dam - Von Bach water pipeline. The manuals provide a detailed guidance on the operation of all machinery and associated systems as well as related maintenance procedures, including maintenance schedules. Implementation of this manuals by NamWater will facilitate the proactive management of potential risks and thus result in impacts on the receiving environment being averted.

The maintenance procedures set out in the manuals, provides specific guidance in terms of the monitoring and maintenance of the scheme components. These procedures will specify the equipment item and specific component of each piece of equipment requiring checking, the scope and nature of the check that is to be carried out including detailed instructions related to the specific check, and the programme for conducting each check.

## **7.3 Facility Management and Operations**

NamWater shall ensure that sufficient budget allocations and provisions are made available to ensure that the infrastructure can be adequately operated and maintained. NamWater must also attend to damage to the scheme components resulting in water loss as a matter of high priority.

## **7.4 Routine Maintenance and Repairs**

The condition of the infrastructure shall be inspected routinely and a maintenance list compiled. Identified, preventative maintenance issues shall be undertaken as soon as possible. Any wastes arising from the repair and maintenance work must be removed and disposed-off at a designated waste deposal site as part of the operation.

## **7.5 Environmental Awareness**

Instilling a sense of environmental awareness and consideration in all employees, but especially those involved with the scheme operations is vital to the overall success of any environmental management plan. It is therefore recommended that a general environmental awareness course for the Scheme Staff Members, who may be required to carry out duties on the scheme, be undertaken.

## **7.6 Waste and Pollution Management**

### **7.6.1 Waste and Pollution Prevention**

To prevent the improper disposal of waste and to prevent pollution, the following management actions shall be enforced:

- All waste will be removed to an appropriate waste dump.
- No waste should be buried.
- General Waste: Includes waste paper, plastic, cardboard, harmless organic (e.g. vegetables) and domestic waste.
- No littering will be allowed. The plant area will be kept free of waste at all times.
- Provide sufficient waste bins at worksites. Make sure that all waste is removed from the worksites.



- Hazardous Substances include: sewerage, fuels, lubrication oils, hydraulic and brake fluid, solvents, paints, anticorrosives, insecticides and pesticides, chemicals, acids etc. It should be disposed of at designated hazardous disposal sites.
- Contaminated soil should be stored in drums and taken to the nearest appropriate waste dumpsite.
- Do not change oil on uncovered ground. Drip trays will be used to catch oil when vehicles are repaired in the field.
- Used oil and hydraulic fluids will not be discarded on the soil or buried. It will be removed from site and taken back to an appropriate dump.
- In the event of a hazardous spill:
  - ✓ Immediately implement actions to stop or reduce the spill.
  - ✓ Contain the spill.
  - ✓ Arrange implementation of the necessary clean-up procedures.
  - ✓ Collect contaminated soil, water and other materials and dispose it at an appropriate waste dumpsite.
- Used solvents and grease should be stored in drums or other suitable containers. It should be sealed and recycled or disposed at an appropriate disposal site.
- Hazardous waste should not be burnt.
- Bunding, concrete slabs and/or other protective measures should be installed where hazardous materials are handled.
- Ensure that the staff are informed and have information pertaining to the management of spills or ingestion.

### **7.6.2 Hazardous Materials**

Where hazardous materials are required for repair and maintenance work (including fuels and oils), care will be taken to ensure that a competent individual is appointed to enforce the responsible use of such materials. The operational staff or maintenance teams shall carry a copy of the relevant Material Safety Data Sheet (MSDS) whenever using such materials. The Scheme Supervisor shall ensure that persons working with hazardous materials have been trained in the handling of such substances, as well as in emergency procedures to be followed in the event of an accidental spillage or medical emergency. Maintenance teams shall also carry a spill kit containing the appropriate neutralizing chemicals, absorbent materials and other relevant equipment required to undertake a clean-up of any spill that may occur.

### **7.6.3 Noise Management**

During maintenance operations, all silencing mechanisms on all equipment must be in a good state of repair. Except for in emergency situations, no amplified sound may be broadcast. All routine maintenance shall be restricted to daylight hours.

### **7.7 Health and Safety**

To minimise the risk of HIV infection and the increase of STI's and the occurrence injuries the following management actions shall be enforced:

- Provide an AIDS awareness programme to all the staff.

- Make sure that all staff are equipped and know how to use safety and protective gear. This includes hard hats, goggles, hearing protectors, dusk masks, steel-toed shoes etc.
- Keep a comprehensive first aid kit at Scheme.
- Establish an emergency rescue system for evacuation of serious injured people.
- Emergency procedures for accidents should be communicated to all employees.
- Dangerous areas must be clearly marked and access to these areas controlled or restricted.
- Good driving and adherence to safety rules will result in a minimum number of road and workplace accidents.
- Fire extinguishers must be available at all refuelling sites. Staff should be trained to handle such equipment.
- Nobody is allowed to dispose a burning or smouldering object in an area where it may cause the ignition of a fire.
- Hazardous substances must be kept in adequately protected areas to avoid soil, air or water pollution.
- Work areas, such as these for the maintenance of equipment, must be on concrete slabs.
- Explosives should be stored according to the prescribed regulations.

## 8. SITE CLOSURE AND REHABILITATION

Rehabilitation is the process of returning the land in a given area that has been disturbed by construction and earthworks to some degree of its former state, or an otherwise determined state. Many projects, if not all, will result in the land becoming degraded to some extent. However, with proper rehabilitation most impacts associated with the reservoir construction project, could be mitigated and restored to an acceptable level. Poorly rehabilitated construction areas provide a difficult legacy issue for governments, communities and companies, and ultimately tarnish the reputation of operators as a whole.

Objectives of proper site closure and rehabilitation include the following:

- Reduction or elimination of the need for a long-term management program to control and minimise the long-term environmental impacts;
- Clean-up, treatment or restoration of contaminated areas (e.g. soils contaminated by oil or fuel spills, concrete spills, etc.). Excavation of contaminated material and disposal thereof in an acceptable manner.

Rehabilitation measures to implement:

- a. A site inspection will be held quarterly by the scheme supervisor after every maintenance work during operation of the scheme. Rehabilitation will be done to the satisfaction of the ENV section and MET.
- b. Frequent inspections of the scheme and effective follow-up procedures, to prevent minor defects from becoming major repair jobs.
- c. Make sure all soil polluted during maintenance work is properly stored in drums and removed to an appropriate waste dump.
- d. Make sure all windblown litter is removed once maintenance has seized.
- e. Make sure that all potential hazards (i.e. the sewerage pit) are properly closed and left in a safe and neat position.

Rehabilitation will be completed when the above have be achieved.

## 9. NAMWATER ENVIRONMENTAL CODE OF CONDUCT

### **What is an Environmental Code of Conduct?**

It is a set of rules that everybody has to follow in order to minimise damage to the environment.

### **What is the ENVIRONMENT?**

The ENVIRONMENT means the surroundings within which people live. The ENVIRONMENT is made up of the **soil, water, plants, and animals** and those characteristics of the soil, water, air, and plant and animal life that influence **human health and well-being**. **People** and **all human activities** are also part of the environment and have to be considered during the operation of the Scheme.

### **Do these ENVIRONMENTAL RULES apply to me?**

YES, The Environmental Rules apply to EVERYBODY. This includes all permanent, contract, or temporary workers as well as any other person who visits the Scheme. Every person will be required to adhere to the Environmental Code of Conduct.

### **ALL PERSONNEL must study and keep to the Environmental Code of Conduct**

The SCHEME SUPERVISOR will issue warnings and will discipline ANY PERSON who breaks any of the Environmental Rules. Repeated and continued breaking of the Rules will result in a disciplinary enquiry and which may result in that person being asked to leave the Scheme permanently.

### **What if I do not understand the ENVIRONMENTAL RULES?**

ASK FOR ADVICE, if any member of the WORKFORCE does not understand, or does not know how to keep any of the Environmental Rules, that person must seek advice from the SCHEME SUPERVISOR. The PERSON that does not understand must keep asking until he/she is able to keep to all the Environmental Rules.

### **Safety and Security**

1. Only enter and exit roadways and construction areas at demarcated entrances.
2. Wear protective clothing and equipment as per signboards at the Scheme and according to instructions from your SCHEME SUPERVISOR.
3. Report to your SCHEME SUPERVISOR if you see a stranger or unauthorised person in the construction area.
4. Never enter any area that is out of bounds or that is demarcated as dangerous without permission of your SCHEME SUPERVISOR.
5. Never climb over any fence or enter private property without permission of the landowner or your SCHEME SUPERVISOR.
6. Do not remove any vehicle, machinery, equipment, or any other object from the construction site without the permission of your SCHEME SUPERVISOR.
7. Keep clear of blasting sites. Follow the instructions of your SCHEME SUPERVISOR.
8. Never enter or work in the Scheme while under the influence of alcohol or other intoxicating substances.

9. All staff should know the emergency procedures in case of accidents.

### **Waste Disposal**

10. Learn the difference between different types of waste, namely:
  - general waste, and
  - hazardous waste.

Containers will be provided for different types of wastes.

**General Waste includes waste paper, plastic, cardboard, harmless organic (e.g. Vegetables) and domestic waste**

**Hazardous Waste includes objects, liquids or gases that are potentially dangerous or harmful to any person or the environment. Sewage, fuel, tyres, diesel, oils, hydraulic and brake fluid, paints, solvents, acids, soaps and detergents, resins, old batteries, etc. are all potentially hazardous.**

11. Learn how to identify the containers for the different types of wastes. Only throw general waste into containers, bins or drums provided for general waste.
12. Recycle drums, pallets and other containers.
13. Never bury or burn any waste on site, all waste is to be disposed in allocated refuse disposal containers, bins or bags.
14. Never overfill any waste container. Inform your SCHEME SUPERVISOR if you notice a container that is nearly full.
15. Do not litter.
16. Do not bury litter or rubbish in the backfill trench.

### **Plants and Animals**

21. **Do not ever pick any plants, or catch any animal.** People caught with plants or animals in their possession will be handed to the authorities for prosecution.
22. Never feed, tease, play with, or set devices to trap any animal or livestock. Wild animals are not to be domesticated.
23. Keep off the rock outcrops unless given specific permission by the SCHEME SUPERVISOR to be there.
24. Never cut down any tree or branches for firewood.
25. Never leave rubbish or food scraps or bones where it will attract animals, birds, or insects.
26. Rubbish must be thrown into allocated waste disposal bins/bags.
27. Always close the gates behind you.

### **Preventing Pollution**

28. Only work with hazardous materials in bunded areas.
29. Never discard any hazardous substances such as fuel, oil, paint, solvent, etc. into stream channels or onto the ground. Never allow any hazardous substances to soak into the soil.
30. Clean up spills immediately.
31. Immediately report to your SCHEME SUPERVISOR when you spill, or notice any hazardous substance overflow, leak or drip or spill on site, into the streambeds or along the road.
32. Immediately report to your SCHEME SUPERVISOR when you notice any container, which holds hazardous substances overflow, leak or drip. Spillage must be prevented.
33. Only wash vehicles, equipment and machinery, containers and other surfaces at work site areas designated by your SCHEME SUPERVISOR.
34. Do not change oil on uncovered surfaces.
35. If you are not sure how to transport, store, use, or get rid of any hazardous substances ask your SCHEME SUPERVISOR for advice.

### **Health**

36. Drink lots of clean water every day.
37. Use toilets that have been provided.
38. Take the necessary precautions to avoid contracting HIV / AIDS. Condoms are available at most Clinics.
39. Inform your SCHEME SUPERVISOR when you are sick.
40. Do not work with any machinery when you are sick.
41. If you are working in malaria areas, you must take the necessary precautions.

### **Dust Control**

42. Do not make any new roads or clear any vegetation unless instructed to do so by your SCHEME SUPERVISOR.
43. Keep to established tracks and pathways.
44. Keep within demarcated work areas.

### **Saving Water**

47. Always use as little water as possible. Reduce, re-use and recycle water.
48. Never leave taps or hose pipes running. Close all taps after use.

49. Report any dripping or leaking taps and pipes to your SCHEME SUPERVISOR.

#### **Working Hours**

50. You may only work on weekends and after hours with the consent of the SCHEME SUPERVISOR.

#### **Archaeological and Cultural Objects**

52. If you find any archaeological, cultural, historical or pre-historical object on the construction site you must immediately notify your SCHEME SUPERVISOR.
53. Never remove, destroy, or disturb any cultural, historical, or pre- historical object on site.

**Cultural and Historical Objects include old buildings, graves or burial sites, milestones, old coins, beads, pottery and military objects.**

**Pre-Historical objects include fossils and old bones, old human skeletal remains, pieces of pottery and old tools and implements.**

#### **Sensible Driving**

54. Tracks and roads should be kept to a minimum. Where possible follow existing roads.
55. No off-road driving is allowed.
56. Never drive any vehicle without a valid licence for that vehicle class and do not drive any vehicle that is not road-worthy.
57. Never drive any vehicle when under the influence of alcohol.
58. **Always** keep your headlights on when driving on dusty roads.
59. Keep to the roads as specified by your SCHEME SUPERVISOR. Vehicles may only be driven on demarcated construction roads. Drivers should always use three point turns, “u-turns” are not allowed. Do not cut corners.
60. Do not drive on rocky outcrops.

#### **Noise**

61. Keep noise levels as low as possible.
62. Do not operate noisy equipment outside normal working hours.

#### **Fire Control**

63. Do not make open fires, use a drum or tin and do not collect any vegetation to burn.
64. Do not smoke or make fires near refuelling depots or any other area where fuel, oil, solvents, or paints are used or stored. Fireplaces should be at a safe distance from fuel and explosive storage sites as well as vehicle parking sites.
65. Cigarette butts should always be thrown in allocated refuse bins. Make sure that the cigarette butt is out before throwing it into the bin.
66. Immediately notify your SCHEME SUPERVISOR if you see an unsupervised fire at the campsite or construction site.

#### **Dealing with Environmental Complaints**

67. If you have any complaint about dangerous working conditions or potential pollution to the environment, talk to your SCHEME SUPERVISOR.

68. If any person complains to you about noise, lights, littering, pollution, or any harmful or dangerous condition, immediately report this to your SCHEME SUPERVISOR.

**NP du Plessis**  
**Tell: 061-71 2093**  
**Cell: 081 127 9040**

**OR**

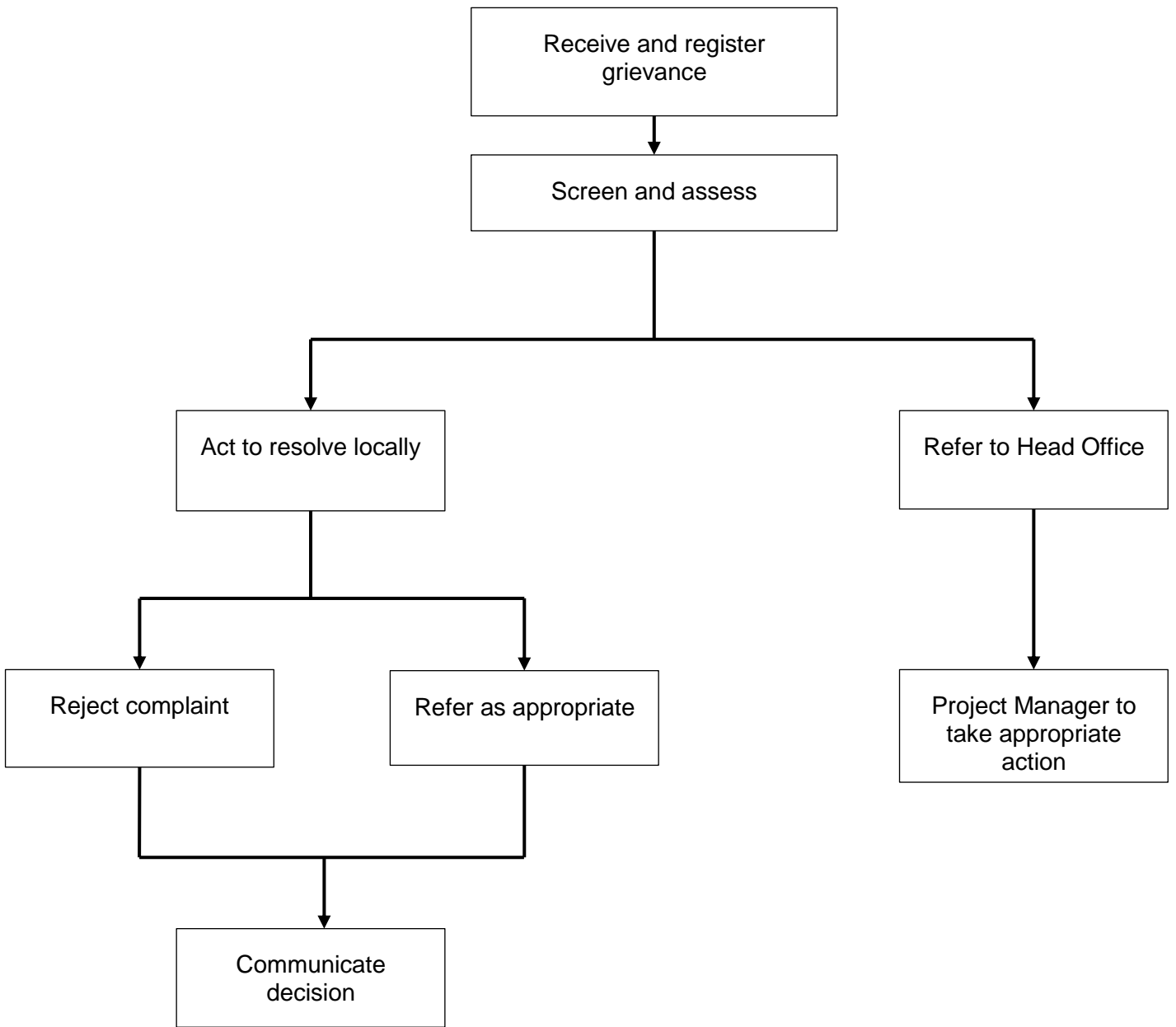
**Jolanda Murangi**  
**Tell: 061-71 2105**  
**Cell: 081 144 1528**



## 10. REFERENCES

1. Barnard, P., C.J. Brown, A.M. Jarvis, and A. Robertson. 1998. Extending the Namibian protected areas network to safeguard hotspots of endemism and diversity. *Biodiversity and Conservation* 7: 31-547.
2. Department of Water Affairs and Forestry. 2005. Environmental Best Practice Specifications: Construction. Pretoria.
3. Department of Water Affairs and Forestry. 2005. Environmental Best Practice Specifications: Site Management and Rehabilitation. Pretoria.
4. Goldblatt, P., P. Bernhardt, and J.C. Manning. 1998. Pollination of petaloid geophytes by monkey beetles (Scarabaenidae: Rutelinae: Hopliini) in southern Africa. *Annals of the Missouri Botanical Garden* 85: 215-230.
5. Khomas Regional Council (KCR). 2015. Khomas Regional Development Profile. Windhoek, Namibia.
6. Mendelsohn, J., Jarvis, A., Roberts, C. & Robertson, T. 2002. Atlas of Namibia: a portrait of the land and its people. Ministry of Environment & Tourism / David Philip: Cape Town.
7. Mendelsohn, J., Jarvis, A., Roberts, C., & Robertson, T. 2009. Atlas of Namibia: A portrait of the land and its people. Cape Town, South Africa: Sunbird Publishers (PTY) LTD.
8. Simmons, R. E., M. Griffin, R. E. Griffin, E. Marais, and H. KolF. 1998. Endemism in Namibia: patterns, process and predictions. *Biodiversity and Conservation* 7: 513-530.

**ANNEXURE 1: GRIEVANCE PROCEDURE AND REGISTRATION FORM**



Grievance Registration

Grievance Registration	
Case No:	Date:
Name of complainant:	Cell no:
	Email address:
Details of grievance: (Date, location, persons involved, frequency of occurrence, effects of ensuing situation, etc)	
Name of person recording grievance:	Cell number:
Proposed date of response:	
Signature of recording person:	Signature of complainant:
Date of redress:	
Decision and action:	