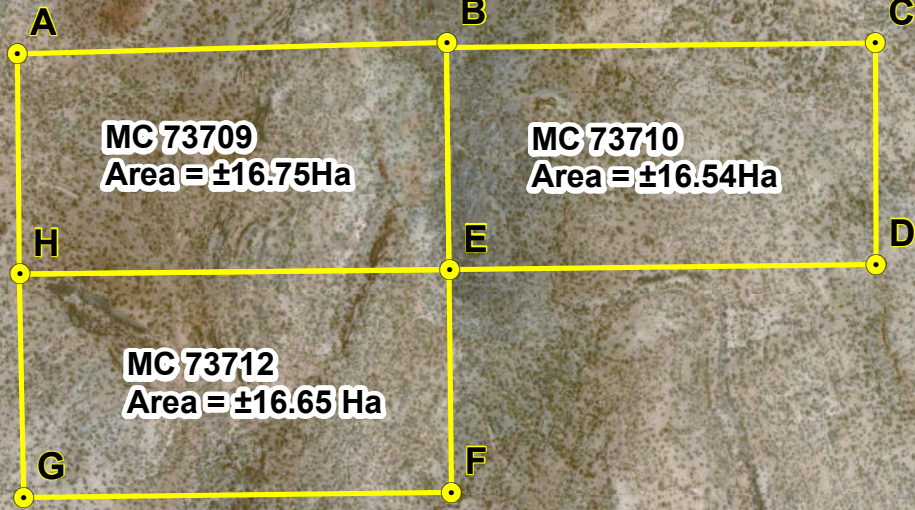
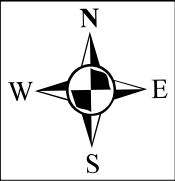


LOCALITY MAP OF MINING CLAIMS 73709, 73710 AND 73712



MC 73709
Area = ±16.75Ha

MC 73710
Area = ±16.54Ha

MC 73712
Area = ±16.65 Ha

Client:




HEEC
HEALTHY EARTH ENVIRONMENTAL CONSULTANTS CC
Sustainable development solutions for life

Designed By: Geo Spatial Services cc
Email: geospatialservicescc@gmail.com
Cell: +264 81 211 3132

Date: June 2023

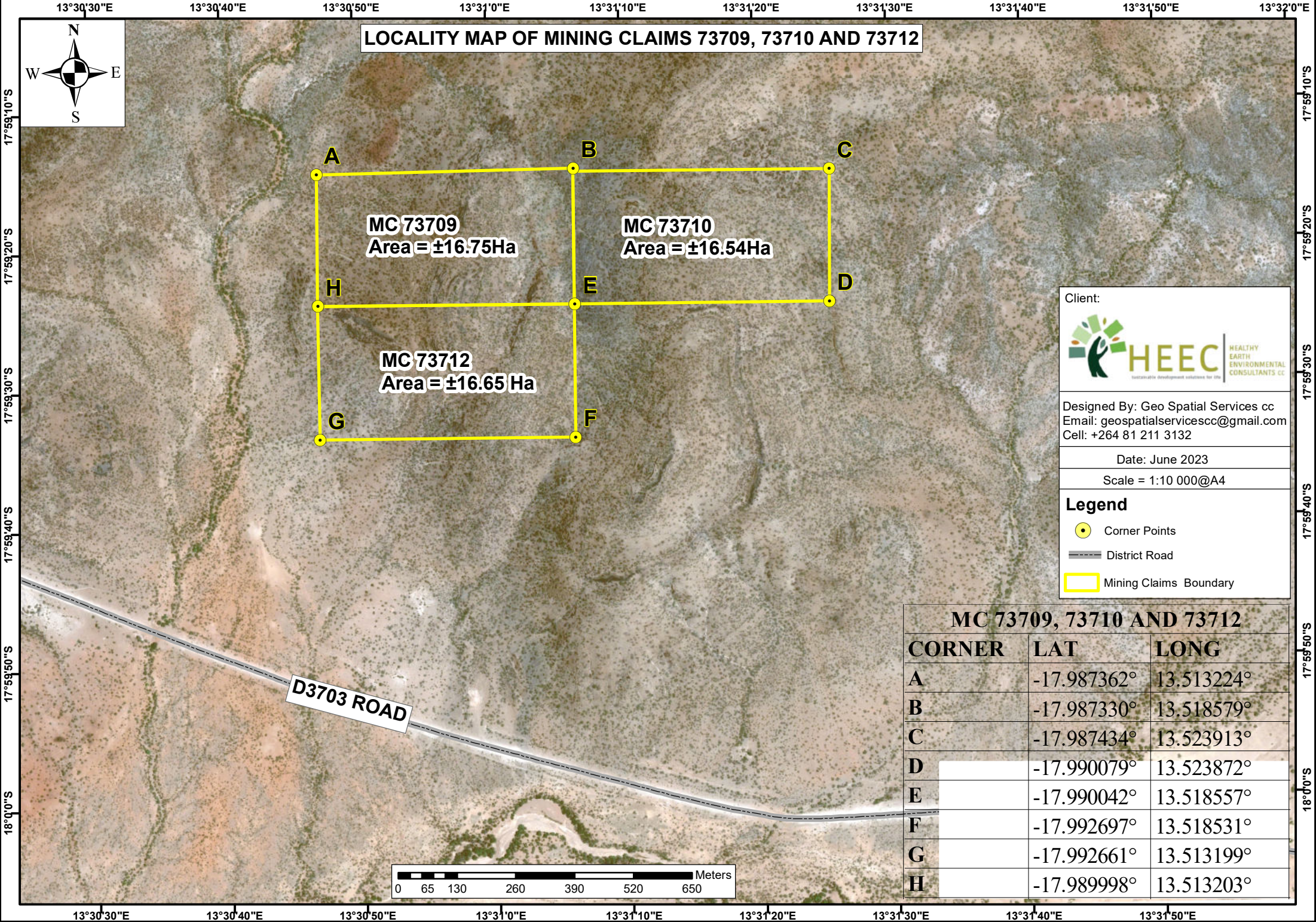
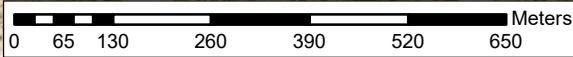
Scale = 1:10 000@A4

Legend

-  Corner Points
-  District Road
-  Mining Claims Boundary

MC 73709, 73710 AND 73712		
CORNER	LAT	LONG
A	-17.987362°	13.513224°
B	-17.987330°	13.518579°
C	-17.987434°	13.523913°
D	-17.990079°	13.523872°
E	-17.990042°	13.518557°
F	-17.992697°	13.518531°
G	-17.992661°	13.513199°
H	-17.989998°	13.513203°

D3703 ROAD



LOCALITY MAP OF MINING CLAIM 73709, 73710 AND 73712



Mining Claims Locality



Legend

- Towns
- District Roads
- Main Roads
- Trunk Roads
- Regions

Client:



Designed By: Geo Spatial Services cc
 Email: geospatialservicescc@gmail.com
 Cell: +264 81 211 3132

Date: June 2023

Scale = 1:5 500 000

