

1.1 PROJECT LOCATION

The proponent intends to mine industrial minerals (aggregate) & crush it as a construction raw material on the mining claims 71427, 71428, 71429 & 71430 situated at Ovikokola Village, Ruacana Constituency, Omusati Region, Namibia. The mining claims are situated at Ovikokola Village. The mining claims are accessible via a track which branch out for a few kilometres toward the north when using the C35 main road. Refer to the locality maps in **Figure 1 & Figure 2** for the locality of the 4 adjacent mining claims for the industrial minerals.



Figure 1: Locality map of Ovikokola Village (red pin), Ruacana Constituency, Omusati Region (HEEC, 2023)



MINING CLAIM AREAS

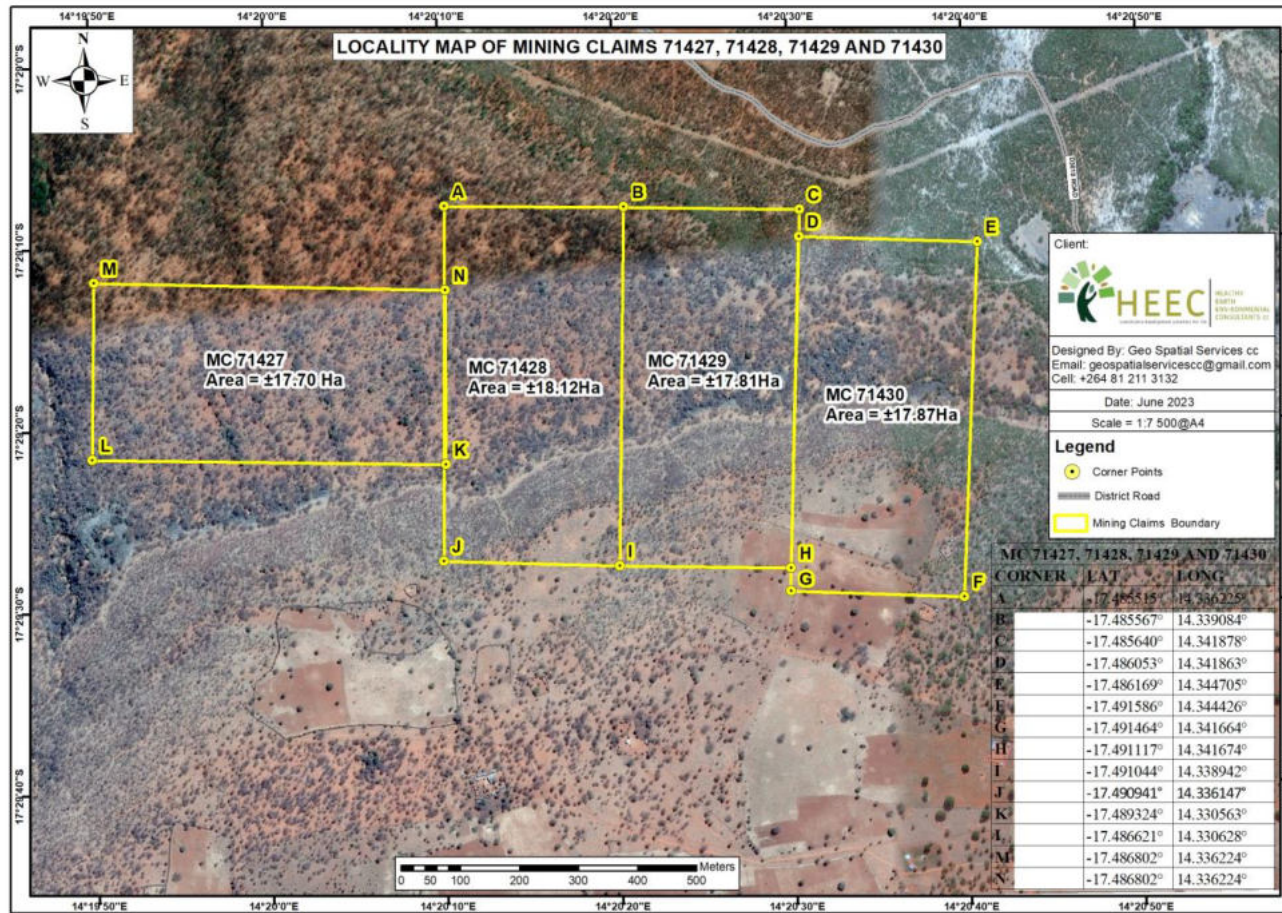


Figure 2: Locality map of the 4 adjacent mining claims 71427, 71428, 71429 & 71430 at Ovikokola Village, Omusati Region (HEEC, 2023).

