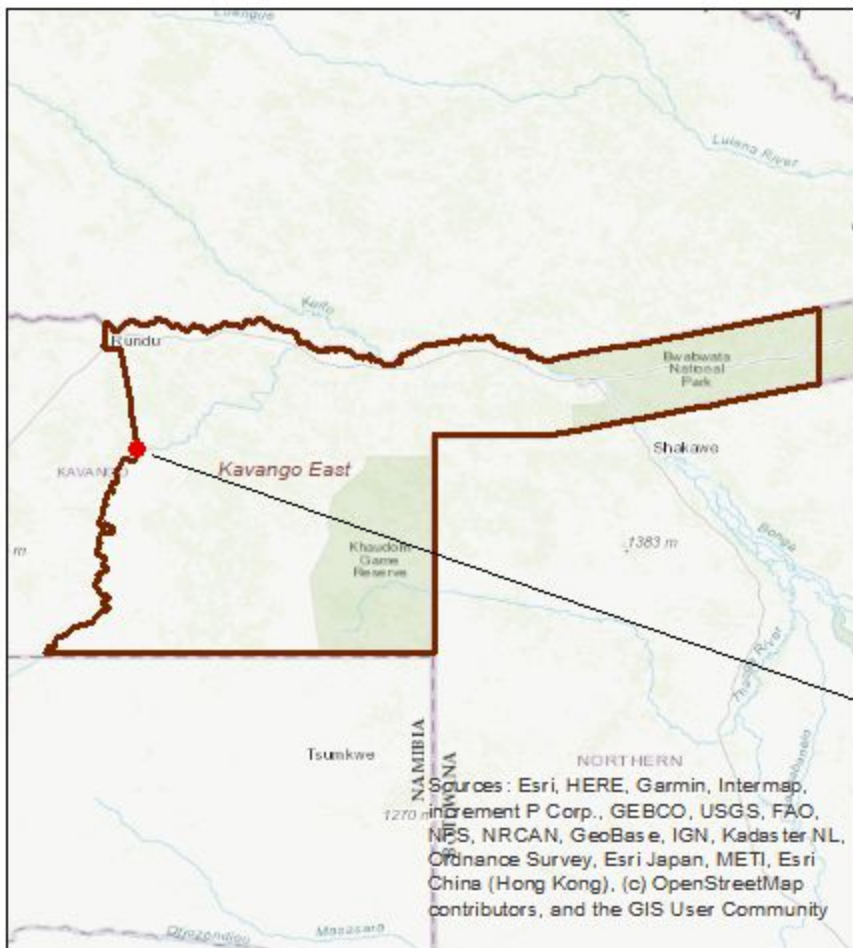



Proposed Telecommunication Base Tranceiver Station Tower in Ncaute Village, Kavango East Region-Nmaibia



Sources: Esri, HERE, Garmin, Intermap, increment P Corp., GEBCO, USGS, FAO, NGS, NRCAN, GeoBase, IGN, Kadaster NL, Ordnance Survey, Esri Japan, METI, Esri China (Hong Kong), (c) OpenStreetMap contributors, and the GIS User Community

Legend

 Ncaute_BTS



Esri, HERE, Garmin, (c) OpenStreetMap contributors, and the GIS user community, Source: Esri, DigitalGlobe, GeoEye, Earthstar Geographics, CNES/Airbus DS, USDA, USGS, AeroGRID, IGN, and the GIS User Community

D&P Engineers and Environmental Consultants
 17 Parsival Street, Office 9 & 10, Korrigan Building, Windhoek
 PO Box 8401, Bachbrecht,
 Telephone: +264 (61) 302 672/ 081299 8444
 Facsimile: +264 (61) 255 207
 tdavid@dpe.com.na



D&P ENGINEERS AND ENVIRONMENTAL CONSULTANTS
"Purpose with Passion"

