

APPENDIX B - NON-TECHNICAL SUMMARY



ECC-110-305-NTS-01-B

NON-TECHNICAL SUMMARY FOR
A CHARCOAL & BRIQUETTE STORAGE, PROCESSING AND PACKAGING FACILITY IN
WITVLEI, OMAHEKE REGION, NAMIBIA
PREPARED FOR



JUNE 2020

PO BOX 91193 Windhoek Namibia
Environmental Compliance Consultancy CC
CC/2013/11404

NON-TECHNICAL SUMMARY

CHARCOAL & BRIQUETTE STORAGE, PROCESSING AND PACKAGING FACILITY IN WITVLEI, OMAHEKE REGION, NAMIBIA

1 PURPOSE OF THIS DOCUMENT

The purpose of this Non-Technical Summary (NTS) is to provide Interested and Affected Parties (I&APs) background to the project.

The purpose of the project is to obtain an environmental clearance certificate for the existing activities and additional developments that will be included at the existing project site in Witvlei, Omaheke Region.

By registering for the project, all I&APs will be kept informed throughout the environmental clearance certificate application process, and a platform for participation will be provided to submit comments/recommendations pertaining to the project.

This NTS includes the following information on:

- The location of the existing facility;
- The necessity of the project, benefits or adverse impacts anticipated;
- The alternatives to the project have been considered and assessed;
- How the ESIA process works;
- The public participation process and how to become involved; and
- Next steps and the way forward.

2 DESCRIPTION OF PROPOSED PROJECT

2.1 BRIEF INTRODUCTION

Environmental Compliance Consultancy (ECC) has been engaged by the proponent Namchar Namibia to undertake an ESIA and an Environmental Management Plan (EMP) in terms of the Environmental Management Act, No. of 7 of 2007 and its regulations. An environmental clearance application will be submitted to the

relevant competent authorities; and the Ministry of Environment, Forestry, and Tourism (MEFT).

2.2 LOCATION

The project is located approximately 1 kilometre north of Witvlei settlement in the Omaheke Region, Namibia. The site location is shown in Figure 1.

2.3 WHY IS THE PROJECT NEEDED

Charcoal production in Namibia presents strategies to combat bush encroachment, supplement farming income, and contribute to employment creation. Namchar Namibia, through its current facility, will continue storing, processing and packaging charcoal for exporting internationally and local market distribution. Namchar will continue to increase its current revenue and sustain its direct employment.

2.4 WHAT ARE THE PROJECT ACTIVITIES

It should be noted that the Namchar is operating at an existing facility. The following activities and infrastructure are associated with the project:

- Continued operation of existing charcoal and briquette storage, processing, and packaging facility, offices, as well as toilet facilities.
- Water is sourced via the NamWater pipeline system.
- Electricity is supplied by a three (3) phase NamPower electricity network.
- New infrastructure to be built includes: a weighbridge to be built in the future.

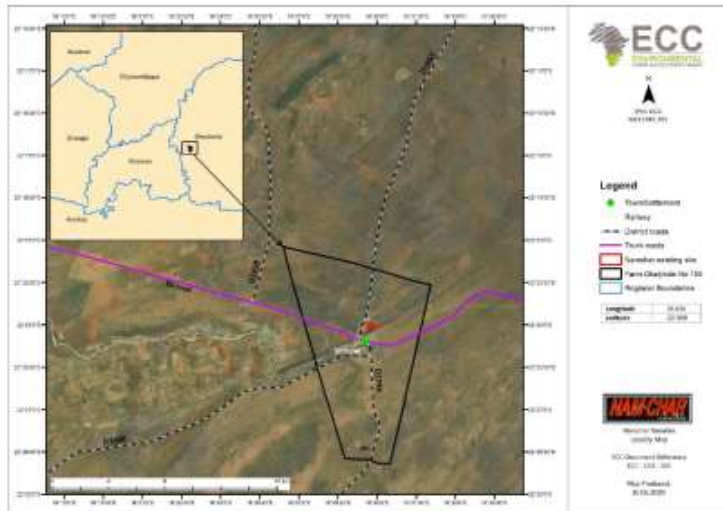


FIGURE 1 – LOCATION OF NAMCHAR NAMIBIA FACILITIES

2.5 POTENTIAL IMPACTS OF THE PROJECT

2.5.1 SOCIO-ECONOMIC

The potential social impacts are anticipated to be of low significance, and those that may transpire shall be confined within the project site; these potential impacts may include the following:

- Potential economic benefits due to increased foreign currency flow, and
- Approximately 60 new jobs will be created as a result of the project.

2.5.2 ENVIRONMENTAL

The potential environmental impacts are anticipated to be of minor significance, and those that may occur shall be contained within the site, these potential impacts may include the following:

- Generation of noise due to the handling and processing of charcoal during operations, and
- Generation of dust due to the handling and processing of charcoal during operations.

3 CONSIDERATION OF ALTERNATIVES

Best practice environmental assessment methodology calls for consideration and assessment of alternatives to the project.

The project is operating at an existing facility with existing activities. The additional developments (weighbridge) will be constructed on already disturbed footprint at the existing site. Therefore, no other alternatives were considered.

During the assessment, alternatives will take the form of consideration of optimisation and efficiency to reduce potential effects.

4 THE ENVIRONMENTAL ASSESSMENT PROCESS

This EIA, conducted by ECC, is undertaken in terms of the Environmental Management Act, 2007, and its regulations. The process followed in this EIA is set out in the flowchart in figure 2.

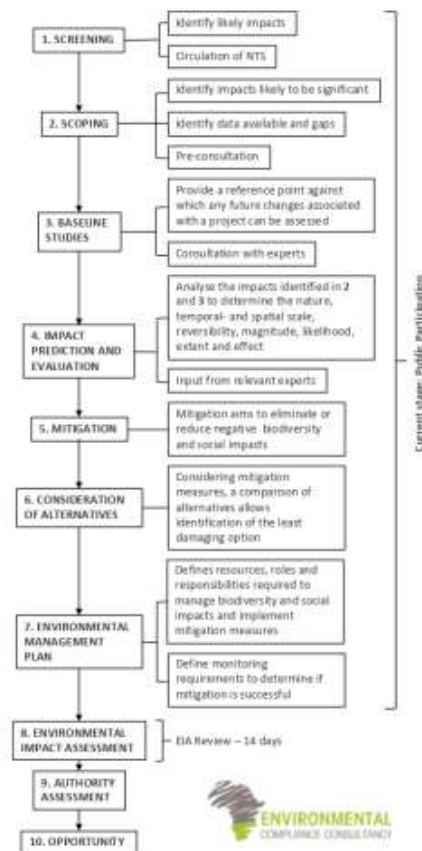


FIGURE 2 - FLOWCHART OF THE ENVIRONMENTAL ASSESSMENT PROCESS

4.1 SCREENING

A review of the project screening findings against the listed activities was conducted; the findings of which are summarised below:

ENERGY GENERATION, TRANSMISSION AND STORAGE ACTIVITIES **(EXISTING ACTIVITY)**

1 The construction of facilities for –

- (b) The transmission and supply of electricity
 - The project is supplied with electricity by NamPower with a three (3) phase electricity network at 155kW per day.

WASTE MANAGEMENT, TREATMENT, HANDLING AND DISPOSAL ACTIVITIES **(EXISTING ACTIVITY)**

2.2 Any activity entailing a scheduled process referred to in the Atmospheric Pollution Prevention Ordinance, 1976.

- The project will generate dust due to the handling and processing of charcoal during operations.

LANDUSE AND DEVELOPMENT ACTIVITIES **(POSSIBLE ACTIVITY)**

5.1 The rezoning of land from – agriculture use to industrial use

- The project is currently on an agricultural zoned area. There is the possibility of rezoning from agriculture to industrial zoning.

WATER RESOURCE DEVELOPMENTS **(EXISTING ACTIVITY)**

8.6 Construction of industrial and domestic wastewater treatment plants and related pipeline systems. **(Possible activity)**

- There is a French drain system presently on site. It is recommended that the client constructs a wastewater treatment plant and related pipeline system.

HAZARDOUS SUBSTANCES TREATMENT, HANDLING, AND STORAGE

9.2 Any process or activity which requires a permit, licence or other form of authorisation, or the modification of or changes to existing facilities

for any process or activity which requires an amendment of an existing permit, licence or authorisation or which requires a new permit, licence or authorisation in terms of a law governing the generation or release of emissions, pollution, effluent or waste. **(Existing activity)**

- There is a French drain system presently on site.

The potential environmental and social effects are anticipated to be of minor significance, and those that may occur shall be contained on the project site.

4.2 BASELINE STUDIES

For the project, baseline information will be obtained through a desk-based studies and site verification process by focusing on the environmental receptors that could be affected by the project. ECC will also engage with stakeholders, I&APs and the proponents to seek input into the assessment.

4.3 IMPACT ASSESSMENT

Impacts will be assessed using the ECC EIA methodology. The EIA will be conducted in terms of the Environmental Management Act, No. 7 of 2007 and its regulations. ECC's methodology for impact assessments was developed using IFC standards in particular Performance Standard 1 'Assessment and management of environmental and social risks and impacts' (IFC 2012, 2017) and Namibian Draft Procedures and Guidance for EIA and EMP (GRN, 2008) including international and national best practice with over 25 years of combined EIA experience.

4.4 ENVIRONMENTAL MANAGEMENT PLAN

An EMP shall be developed for the project, setting out auditable management actions for the project to ensure careful and sustainable management measures are implemented for their activities in respect to the surrounding environment and community.

4.5 PUBLIC PARTICIPATION AND ADVERTISING

Public participation is an important part of the EIA process; it allows the public and other stakeholders to raise concerns or provide valuable local environmental knowledge that can benefit the assessment, in addition it can aid the design process. This project is currently at the scoping phase and the public participation phase.

At this phase ECC will perform the following:

- Identify key stakeholders, authorities, municipalities, environmental groups and interested or affected members of the public, hereafter referred to as I&APs
- Distribute the NTS for the project (this document)
- Advertise the environmental application in two national newspapers
- Place notices on-site at or near the boundary
- If required host a public meeting to encourage stakeholder participation and engagement, and provide details of issues identified by the environmental practitioner, stakeholders and I&APs
- Record all comments of I&APs and present such comments, as well as responses provided by ECC, in the comments and responses report, which will be included in the scoping report that shall be submitted with the application, and
- Circulate I&AP comments to the project team for consideration of project design.

Comments must be submitted in writing and can be emailed using the details in the contact us section below.

CONTACT US

We welcome any enquiries regarding this document and its content. Please contact:

Environmental Compliance Consultancy (ECC)

info@eccenvironmental.com

Tel: +264 816 697 608

www.eccenvironmental.com

At ECC we make sure all information is easily accessible to the public.

Follow us online to be kept up to date:



APPENDIX C- EVIDENCE OF PUBLIC CONSULTATION

C.3 STAKEHOLDER LETTER



+264 81 669 7608

info@eccenvironmental.com

www.eccenvironmental.com



REFERENCE: ECC-110-305-LET-06-A
08 September 2020

Identified Stakeholder and or Potentially Interested Party for:
Namchar Namibia charcoal and briquette storage, processing, and packaging facility in Witvlei,
Omaheke Region.

Dear Sir or Madam:

**RE: NOTIFICATION OF ENVIRONMENTAL ASSESSMENT FOR THE NAMCHAR NAMIBIA CHARCOAL
AND BRIQUETTE STORAGE, PROCESSING, AND PACKAGING FACILITY IN WITVLEI, OMAHEKE
REGION**

Environmental Compliance Consultancy (ECC) has been engaged by Namchar Namibia, the Proponent, to act on their behalf for the application of an environmental clearance certificate for the charcoal and briquette storage, processing, and packaging facility in Witvlei, Omaheke Region. The exact location of the project is visible on the map hereto attached.

ECC is conducting the Environmental Impact Assessment (EIA) in terms of the Environmental Management Act, No. 7 of 2007 and will be submitted to the competent authority, the Ministry of Environment, Forestry and Tourism for a record of decision.

Namchar operates on an existing facility located approximately 1 km north of Witvlei on a portion of Farm Okatjirute No. 155 which is zoned as a light industrial area, Omaheke Region. The facility's current operational activities include the sourcing of raw material (charcoal) exclusively from Namibian charcoal producers and from farms in the surrounding area. Charcoal is then processed by means of sifting, packaging, and producing briquettes that are then prepared for dispatch. Namchar have a range of other products such as fire lighters, firewood, disposable BBQ's and other consumables. The project generates income for the local community as well as extended financial, social, and environmental benefits.

This letter is intended to engage stakeholders and potentially Interested and Affected Parties (I&APs) of the project and provide a communication channel to ECC for the project. You have been identified as a stakeholder; therefore, ECC wishes to inform you of how you can become involved in the project.

Public participation is an important part of the EIA process, as it allows the public and stakeholders to obtain information about the proposed project. Public participation occurs at various stages throughout a project's lifecycle including:

- Advertising in newspapers;

ENVIRONMENTAL COMPLIANCE CONSULTANCY CC
PO BOX 91193 WINDHOEK, NAMIBIA
MEMBERS: J L MOONEY & JS BEZUIDERHOUT
REGISTRATION NUMBER: CC29/13/11404



- Distributing a Non-Technical Summary (NTS) to identified stakeholders and I&APs;
- Registered I&APs will also be informed of the available draft scoping report for a 7-day comment and review period, during this period I&APs will have the opportunity to review the draft document and raise any issues or concerns, and
- Stakeholders and I&APs who wish to register as an I&AP must do so on the ECC website as per the link provided: <https://eccenvironmental.com/project/a-charcoal-briquette-storage-processing-and-packaging-facility-in-witvlei-omaheke-region-namibia/>

If you are unable to complete the registration form online please email info@eccenvironmental.com and request an electronic copy of the form that you can complete, sign, scan and return via email to info@eccenvironmental.com to register as an I&AP for the project.

ECC values community input and participation in our projects and we look forward to working with you as the project develops.

The NTS can also be obtained from our website and provides a brief overview of the proposed project <https://eccenvironmental.com/wp-content/uploads/2020/09/ECC-110-305-NTS-01-B.pdf>

Should you have any questions or require additional information please do not hesitate to contact either of us.

Yours sincerely,



Stephan Bezuidenhout
Environmental Compliance Consultancy
Office: +264 81 669 7608
Email: stephan@eccenvironmental.com



Jessica Bezuidenhout Mooney
Environmental Compliance Consultancy
Office: +264 81 669 7608
Email: jessica@eccenvironmental.com

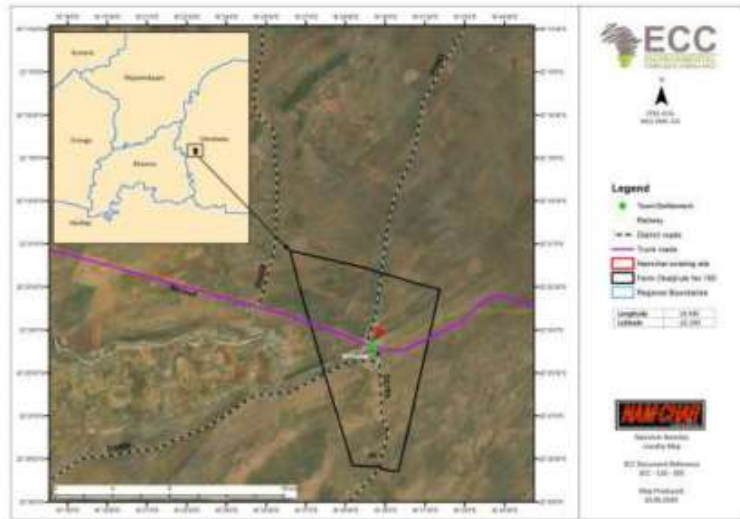


FIGURE 1 - LOCALITY MAP OF THE PROPOSED PROJECT

ENVIRONMENTAL COMPLIANCE CONSULTANCY CC
 PO BOX 91193 WINDHOEK, NAMIBIA
 MEMBERS: J. L. MOONEY & J.S. BEZUIDENHOUT
 REGISTRATION NUMBER: CC2013/11404