

**Dalnek Mineral (Pty) Ltd**

**(BID): EPL No. 8685**



**Physical Address:** 112, Robert Mugabe Avenue, Windhoek

**Postal Address:** PO Box 997154 Maerua Mall, Windhoek

**Telephone:** +264 (0) 61 259 530

**Fax2email:** +264 (0) 886 560 836

**Email:** [info@edsnamibia.com](mailto:info@edsnamibia.com)

**Web:** [www.edsnamibia.com](http://www.edsnamibia.com)

## **BACKGROUND INFORMATION DOCUMENT (BID)**

**Environmental Scoping Assessment (ESA) For the Proposed  
Prospecting and Exploration activities on Exclusive Prospecting  
Licence (EPL) No. 7977 Located Near Klein Aub, in Hardap Region**

**Environmental Consultant: Excel Dynamic Solutions (Pty) Ltd**

**Proponent: Andreas Simaneka Ngula**

**April 2023**

## 1 INTRODUCTION

Andreas Simaneka Ngula (*The Proponent*) is the owner of Exclusive Prospecting License (EPL) 7977. EPL 7977 was granted to the Proponent on 08 September 2020, and the EPL tenure is valid until 07 September 2023. The EPL covers a total surface area of 19512.543 ha and is located about 35.24 km west of Klein Aub (**Figure 1**). The EPL covers a total of eleven (11) farms in two different regions - Khomas and Hardap. EPL 7977 overlies Farms Namakorabis 13, SWartfontein 178, Borodino 179, Nauchas 14, Guisis 180, Nauzerus 921, Emfolinie 553, Eensaam 652, Gugaub 345, Nicolaasrus 702, and StofBakkies 346 (**Figure 2**). The target commodities for prospecting and exploration are **Base & Rare Metals, Industrial Minerals, Dimension Stones, Precious Stones, and Precious Metals**.

Exploration and all mining-related activities are among the listed activities that may not be undertaken without an ECC under the Environmental Management Act (EMA) (2007) and its 2012 Environmental Impact Assessment (EIA) Regulations. The relevant listed activities as per EIA regulations are:

- *3.1 The construction of facilities for any process or activities which requires a license, right of other forms of authorization, and the renewal of a license, right or other forms of authorization, in terms of the Minerals (Prospecting and Mining Act, 1992).*
- *3.2 other forms of mining or extraction of any natural resources whether regulated by law or not.*
- *3.3 Resource extraction, manipulation, conservation, and related activities.*

The Proponent is, therefore, required to obtain an Environmental Clearance Certificate (ECC) before the commencement of exploration works on the EPL. To fulfill the legal requirements, the Proponent has appointed Excel Dynamic Solutions (Pty) Ltd (Environmental Consultants), to conduct the required Environmental Scoping Assessment (ESA) process and submit the ECC application to the Department of Environmental Affairs and Forestry (DEAF) at the Ministry of Environment, Forestry & Tourism (MEFT).

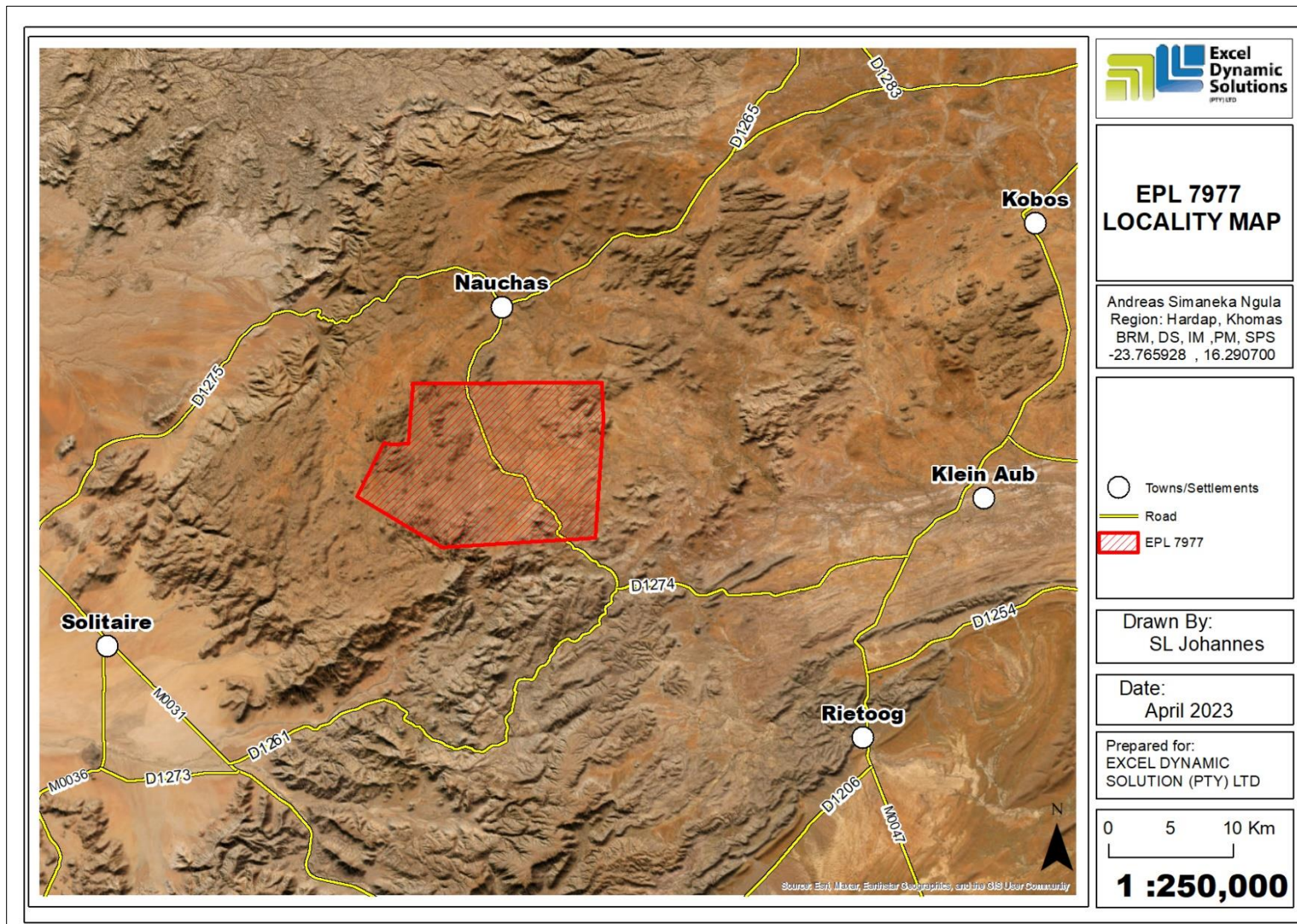


Figure 1: Locality map of EPL 7977 located near Klein Aub, Hardap Region, Namibia

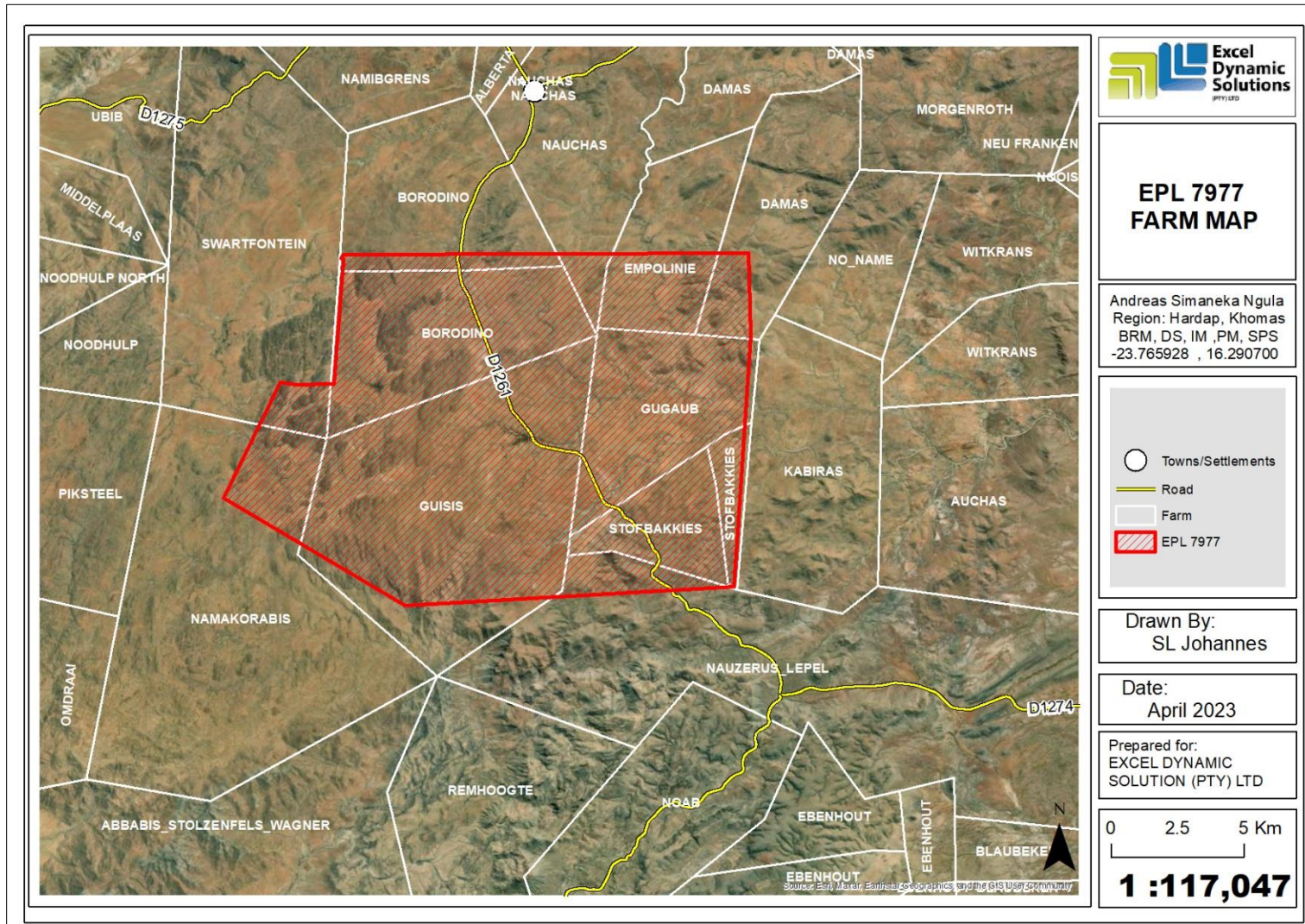


Figure 2: The land use around the project area

## **2. PURPOSE OF THIS DOCUMENT**

It should be noted that the Background Information Document (BID) is a non-technical document of the ESA (not an ESA Report). The BID aims to briefly introduce the proposed project and related activities to interested and affected parties (I&APs) / stakeholders, and provide them with an opportunity to raise issues, and concerns / submit comments about the proposed project.

The planned exploration activities will only commence once the Proponent has been issued with an ECC and obtained all required permits,

## **3 PROJECT DESCRIPTION**

The proposed activities entail prospecting and detailed exploration activities to delineate the mineral deposits. This is to determine whether the deposit for the target commodities is economically feasible (to advance to the resources development and mining phase).

Prospecting and exploration of minerals are the first components of any potential mining project. This is done to acquire the necessary data required for further decision-making and investment options.

Exploration activities are anticipated to last for about three years or sometimes longer (depending on the various factors such as turnaround between exploration data analysis and availability of funds between project phases, etc.).

### **3.1 Project Activities**

The proposed prospecting and exploration activities (methods) are divided into the following categories:

*Phase 1:* Non-invasive techniques (prospecting) – mapping/geochemical and radiometric surveys.

*Phase 2:* Invasive techniques (detailed exploration) – soil sampling, trenching, and drilling.

Once the target areas have been selected and verified under the prospecting phase, detailed exploration works will follow.

### 3.2 Human Resources, Services, and Infrastructure

The following services and infrastructure as outlined below will be required for the project activities:

*Human Resources:* Around 5-10 people will be employed for the project, and will be accommodated in the nearest town or tented camps if necessary.

*Water Supply:* Around 1500 liters of water per month will be required for the activities.

*Fuel Supply (machinery and equipment):* Diesel will be used for machinery and equipment, and power generator.

*Accessibility:* The EPL accessible via D1261 road diverging from C 24 from Klein Aub, Hardap Region.

### 3.3. Waste Management

**Sewage:** Mobile chemical ablution facilities will be provided on-site. Sewage waste will be disposed of appropriately as per instructions of the facility manufacturer.

**Solid waste:** Sufficient waste bins (containers) will be made available at exploration sites and campsites for waste storage and later disposal at the nearest approved waste facility.

**Hazardous waste:** The waste fuel/oils will be carefully stored in a standardized container for disposal at an approved hazardous waste management facility in the nearest Town.

**Health and Safety:** Adequate and appropriate Personal Protective Equipment (PPE) will be provided to project personnel. A minimum of two first aid kits will be readily available onsite.

**Potential Accidental Fire Outbreaks:** Fire extinguishers will be readily available in vehicles, at the sites, and at campsites.

**Project Equipment, Material, Machinery, and Vehicles:** 4X4 vehicles, a drilling supporting truck, an excavator/front-end loader, a dozer, an air compressor, drilling fluids stored in manufacturers approved containers, and a generator for power supply will be required for the proposed project.

Upon completion of exploration works, the disturbed sites will be rehabilitated to their pre-exploration phase as far as practically possible. This will include backfilling of exploration trenches, and boreholes, leveling of stockpiled topsoil, and cleaning of site areas.

#### **4 ENVIRONMENTAL ASSESSMENT**

This ESA process is conducted in accordance with the provisions of the EMA (Act No 7 of 2007) and its 2012 EIA Regulations. The primary objective of the ESA is to identify potential negative impacts associated with the project and assess them. Practical and effective mitigation measures will be recommended for implementation.

The main objectives of this ESA are to:

- Identify potential impacts associated with the proposed Activity.
- Inform I&APs and relevant authorities about the project and provide them with an opportunity to participate during the ESA process.
- Assess the significance of issues and concerns raised.
- Compile a report addressing all identified issues and potential impacts.
- Compile a Draft Environmental Management Plan (EMP) which includes impacts management and mitigation measures.

#### **5.1 Pre-Identified Potential Impacts**

The following potential impacts have been identified:

##### **5.1.1 Positive:**

- Socio-economic development: employment creation and skills transfer.
- Investment opportunities/infrastructure-related development benefits,
- Produce a trained workforce and small businesses in the area.
- Boosting local economic and regional economic development.
- Increased support for local businesses through the procurement of locally available goods and services.

##### **5.1.2 Negative Impacts:**

- Disturbance of existing communal grazing areas,
- Physical land/soil disturbance and prone to erosion
- Impact on fauna and flora (habitat disturbance and poaching).
- Water resources (over-abstraction of water) and soil pollution.
- Air quality issue owing to dust generation

- Occupational and community health and safety risks/hazards
- Vehicular traffic safety and services infrastructure (local roads).
- Vibrations and noise associated with drilling activities.
- Environmental pollution from poor waste management,
- Archaeological or cultural heritage impact
- Potential social nuisance and land use conflicts

Other potential impacts may be identified as the ESA process progresses. All impacts and public concerns/comments will be incorporated and addressed in the Environmental Report and EMP.

### **5.2 Public Consultation Registration**

Public consultation is an important part of the EA process. During the consultation process, I&APs are allowed to raise any issues or concerns pertaining to the project activities.

To comment or receive further information on the project, **please register with Excel Dynamic Solutions (Pty) Ltd** (contact details herein) as an Interested and Affected Party (I&AP).

Furthermore, the Consultation Meeting details will be communicated with registered I&APs.

For comments and/or further information requests, please contact EDS Consultant on the details provided below:

**Contact:**

**Mr. Mandume Leonard**  
**Environmental Assessment Practitioner**

**Tel: +264(0)61 259 530**

**Email: [mleonard@edsnamibia.com](mailto:mleonard@edsnamibia.com)**