

ROADS AUTHORITY
Private Bag 12030
Ausspannplatz
Windhoek
NAMIBIA

Our Ref: RA14/19/2/87

Your Ref:

Enquiries: EAM de Paauw
Telephone: +26461 284 7027
Fax: +26461 284 7151
E-mail: depaauwe@ra.org.na

25 October 2016

Mr S Husselman
URBAN Green cc
PO Box11929
Windhoek

Sir

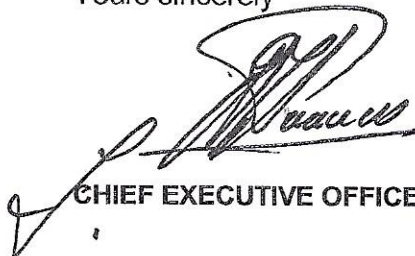
MAIN ROAD 0087: ACCESS TO SAND MINING ACTIVITIES IN SWAKOP RIVER: OKAHANDJA

Your letter of 29 September 2016 has reference as well as various e-mail correspondence between our offices since.

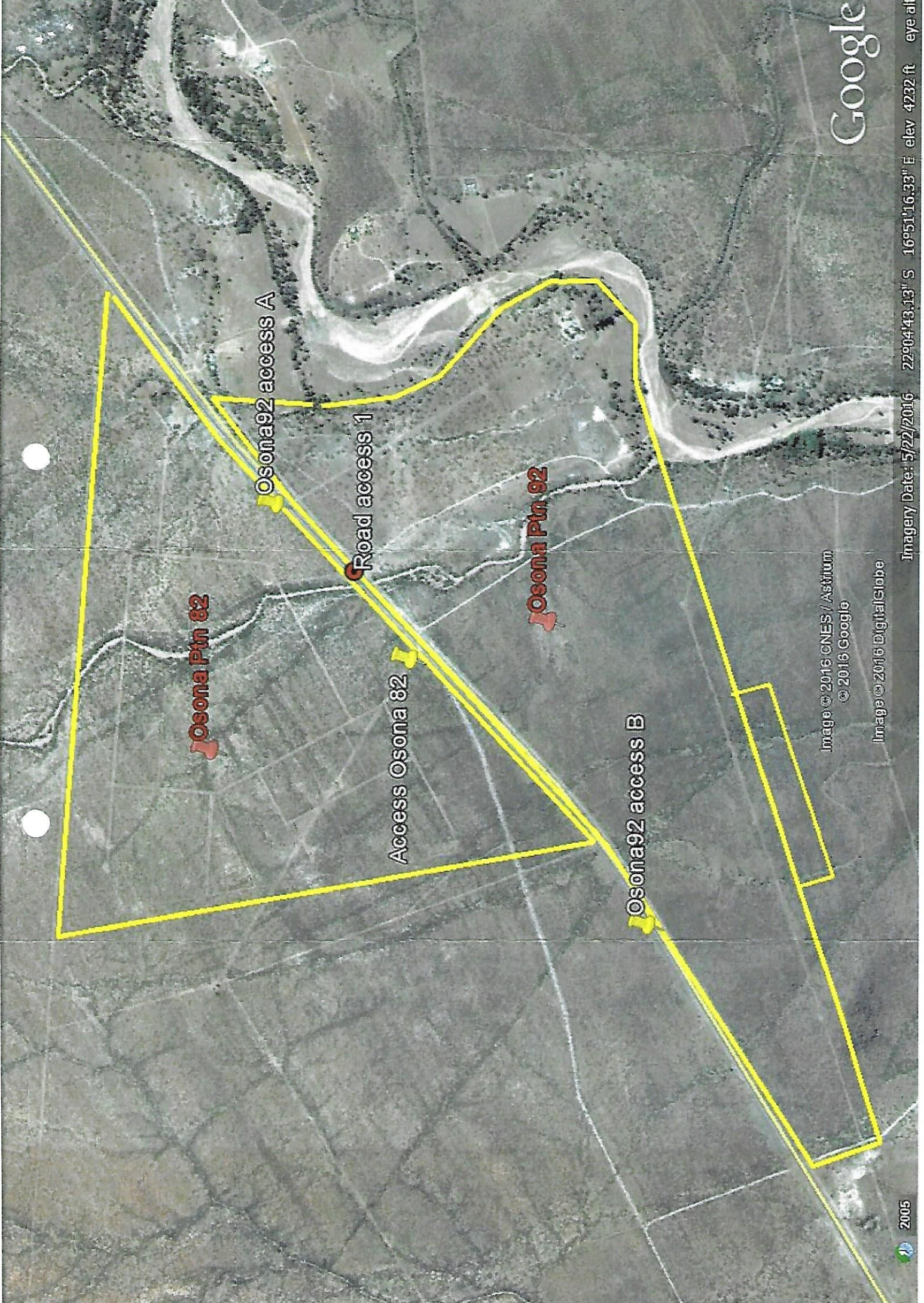
Please see the attached GoogleEarth image indicating the position of the current sand mining access "Road access 1" on Main Road 0087 relative to the position of two recently approved access points to planned developments on Osona Portion 92 and Osona Portion 82.

It will not be possible to retain the current sand mining access in the long term and the proponent will need to approach the developer/owner of Osona Portion 92 for permission to utilize one of the approved accesses to Portion 92 when development of that portion takes place.

Yours sincerely



CHIEF EXECUTIVE OFFICER



Osona Pin 82

Osona Pin 92

Osona92 access A

Road access 1

Access Osona 82

Osona92 access B

Image © 2016 CNES / Astrium
© 2016 Google

Image © 2016 DigitalGlobe

Google