

Kefas Ndaudika Shilongo

(BID): EPL No. 8821



Physical Address: 112, Robert Mugabe Avenue, Windhoek

Postal Address: PO Box 997154 Maerua Mall, Windhoek

Telephone: +264 (0) 61 259 530

Fax2email: +264 (0) 886 560 836

Email: info@edsnamibia.com

Web: www.edsnamibia.com

BACKGROUND INFORMATION DOCUMENT (BID)

Environmental Scoping Assessment (ESA) for the proposed prospecting and exploration activities on Exclusive Prospecting License (EPL) No. 8821 located Near Karasburg, //Karas Region, Namibia.

Environmental Consultant: Excel Dynamic Solutions (Pty) Ltd

Proponent: Kefas Ndaudika Shilongo

April 2023

1 INTRODUCTION

Excel Dynamic Solutions (Pty) Ltd (the consultant) has been appointed by Kefas Ndaudika Shilongo (*The proponent*) to act on their behalf in obtaining an Environmental Clearance Certificate (ECC) for the proposed mineral exploration activities on Exclusive Prospecting License (EPL) 8821. The EPL covers a total surface area of 29995. 3077 ha and is located about 60 km North-East of Karasburg in the //Karas Region (**Figure 1**). The EPL covers (overlies) farms such as Duurdrift Nord 26, Ariams 27, Stinkdorn 28, Oas 29, and Blinkoog 30 (**Figure 2**). The target commodities of interest for this project are **Base & Rare Metals, Industrial Minerals, Dimension Stones, Precious Metals, and Precious Stones.**

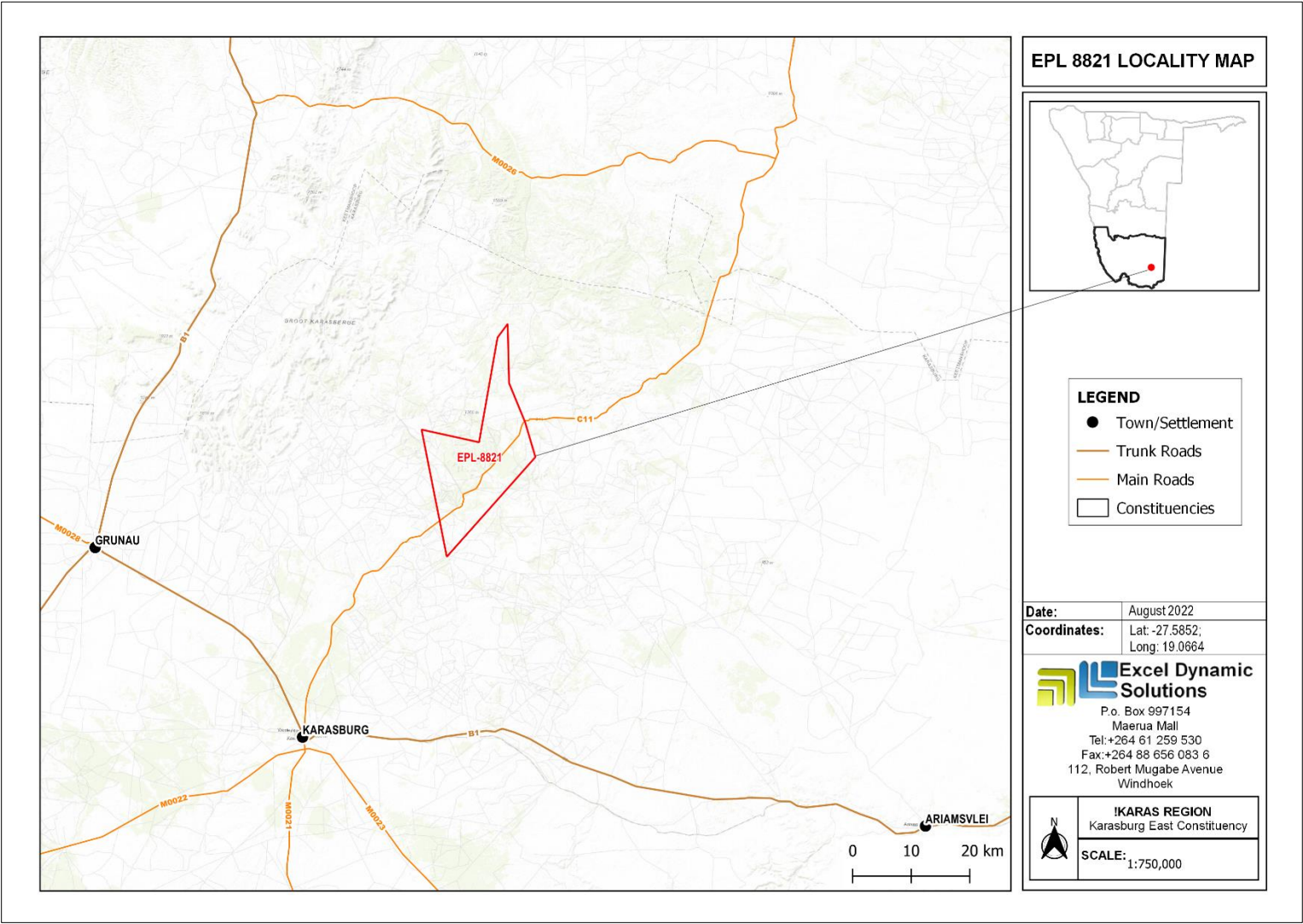


Figure 1: Locality map of EPL No. 8821 located near Karasburg, //Karas Region, Namibia.

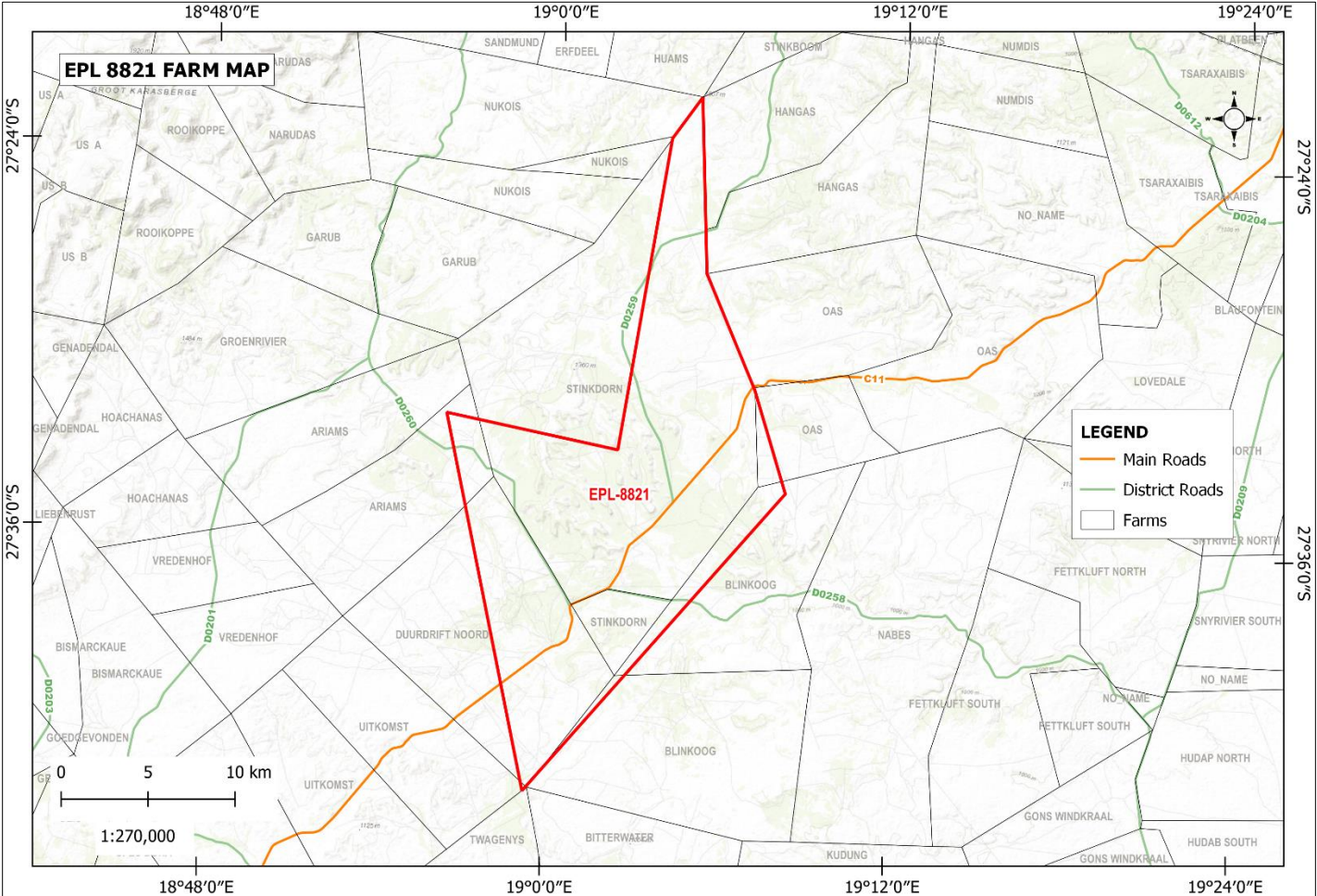


Figure 2: The land use map for EPL 8821.

2. PURPOSE OF THIS DOCUMENT

A Background Information Document (BID) is a non-technical document of the ESA (not an ESA Report). The BID is to briefly introduce the proposed project and related activities to interested and affected parties (I&APs) / stakeholders, and provide them an opportunity to raise issues, and concerns / submit comments about the proposed project.

This is a non-technical document of the Environmental Scoping Assessment (ESA), which serves the purpose of informing Interested and Affected Parties (I&APs) / stakeholders of the following:

- Project location;
- Proposed activities of the project;
- Environmental Impact Assessment (EIA) process to be followed;
- How I&APs and/or stakeholders can be involved.

All I&APs and/or stakeholders are hereby encouraged to submit their comments/inputs/concerns on the proposed project activities, which can contribute significantly to the Environmental Scoping Report (ESR) and Environmental Management Plan (EMP). The EIA and EMP will be submitted to the Ministry of Environment, Forestry and Tourism (MEFT) and Ministry of Mines and Energy (MME) for decision-making.

3. ENVIRONMENTAL AUTHORISATION

In terms of the Environmental Management Act No.7 of 2007 and the EIA Regulations of 2012, the proposed project triggers listed activities that cannot be undertaken without an ECC. As such, an environmental clearance application will be submitted to the competent authorities (MEFT and MME) for decision-making before the commencement of the anticipated project activities.

The listed activities that trigger the proposed project are as follows:

MINING AND QUARRYING ACTIVITIES

3.1 *The construction of facilities for any process or activities which requires a license, right, or other forms of authorization, and the renewal of a license, right, or any other form of authorization in terms of Minerals (Prospecting and Mining Act), 1992.*

3.2 *Other forms of mining or extraction of natural resources whether regulated by law or not.*

3.3 *Resource extraction, manipulation, conservation, and related activities.*

FORESTRY ACTIVITIES

4. The clearance of forest areas, deforestation, afforestation, timber harvesting or any other related activity that requires authorization in terms of the Forest Act No. 12 of 2001 or any other law.

- If required to access target sites, minimal vegetation clearing or thinning shall be conducted, but this will only be for dirt roads.

4. PROJECT DESCRIPTION

The proposed activities entails prospecting and detailed exploration activities to delineate the mineral deposits. This is to determine whether the deposit for the targeted commodities is economically feasible (to advance to the resources development and mining phase).

The prospecting and exploration of minerals are the first components of any potential mining project. This is done to acquire the necessary data required for further decision-making and investment options.

Exploration activities are anticipated to last for about three years or sometimes longer (depending on the various factors such as turnaround between exploration data analysis and availability of funds between project phases, etc.).

4.1 Project Plan and Activities

The proposed prospecting and exploration activities (methods) are divided into two categories:

- **Phase 1:** Non-invasive techniques (prospecting) – mapping/surveys.
- **Phase 2:** Invasive techniques (detailed exploration) – soil sampling, trenching, and exploration drilling.

The following exploration activities are anticipated:

- Desktop review of existing data to identify potential prospecting targets;
- Geological mapping;
- Electromagnetic and geophysical surveys;
- Soil and rock sampling;
- Reverse Circulation (RC) and/or diamond (core)drilling;

- If required, some vegetation may be cleared or thinned to create tracks to allow access to the targeted sites of interest, however, existing tracks will be used as far as reasonably practical;

Decommissioning, final rehabilitation.

4.2 Resources, Services, and Infrastructure

The exploration activities will require the following services and infrastructure to progress smoothly:

Human Resources: It is anticipated that around 5-10 people will be employed for the project, and will be accommodated in tented camps.

Water Supply: Approximately 4,500 liters of water per month will be required for the activities. If required or deemed necessary, or the proponent finds good groundwater during the exploration activity, the borehole may be used as a water source, with the permission of the land owner, and appropriate abstraction permit obtained from the competent authority.

Fuel Supply (machinery and equipment): Diesel will be used for machinery and equipment, and power generator.

Accessibility: The EPL is accessible via C11 Road from Karasburg.

Sewage: Mobile chemical ablution facilities will be provided on-site. Sewage waste will be disposed of appropriately as per instructions of the facility manufacturer.

Solid waste: Sufficient waste bins (containers) will be made available at exploration sites and campsites for waste storage and later disposal at the nearest approved waste facility.

Hazardous waste: The waste fuel/oils will be carefully stored in a standardized container for disposal at an approved hazardous waste management facility in the nearest Town.

Health and Safety: Adequate and appropriate Personal Protective Equipment (PPE) will be provided to project personnel. A minimum of two first aid kits will be readily available onsite.

Potential Accidental Fire Outbreaks: Fire extinguishers will be readily available in vehicles, at the sites, and at campsites.

Project Equipment, Material, Machinery, and Vehicles: 4X4 vehicles, a drilling supporting truck, an excavator/front-end loader, a dozer, an air compressor, drilling fluids stored in manufacturers approved containers, and a generator for power supply will be required for the proposed project.

5. ENVIRONMENTAL ASSESSMENT

The ESA and EMP methodology applied for this project takes into account the provision of the EMA (Act No 7 of 2007) and its 2012 EIA Regulations. The primary objective of the ESA is to identify potential negative impacts associated with the project and that shall be assessed and provide practical and effective mitigation measures for implementation.

The main objectives of this ESA are to:

- Identify potential impacts associated with the proposed Activity.
- Inform I&APs and relevant authorities about the project and provide them with an opportunity to participate in the ESA process.
- Assess the significance of issues and concerns raised.
- Compile a report addressing all identified issues and potential impacts.
- Compile a Draft Environmental Management Plan (EMP) which includes impacts management and mitigation measures.

5.1 Potential Impacts

The following potential socioeconomic and environmental impacts are anticipated during exploration activities:

Positive impacts:

- Socio-economic development: employment creation and skills transfer.
- Investment opportunities/infrastructure-related development benefits.
- Produce a trained workforce and small businesses in the area.
- Boosting local economic and regional economic development.
- Increased support for local businesses through the procurement of locally available goods and services.

Negative Impacts:

- Disturbance of existing communal grazing areas,
- Physical land/soil disturbance and prone to erosion
- Impact on fauna and flora (habitat disturbance and poaching).

- Water resources (over-abstraction of water) and soil pollution.
- Air quality issue owing to dust generation
- Occupational and community health and safety risks/hazards
- Vehicular traffic safety and services infrastructure (local roads).
- Vibrations and noise associated with drilling activities.
- Environmental pollution from poor waste management,
- Archaeological or cultural heritage impact
- Potential social nuisance and land use conflicts

Other potential impacts may be identified as the ESA process progresses. All impacts and public concerns/comments will be incorporated and addressed in the Environmental Report and EMP.

5.2 Public Consultation Registration

Public consultation is an important part of the EA process which ensures that sufficient information is gathered from and/or shared transparently with all I&As and stakeholders, including the findings of the reports, during the specified comment periods.

I&As are hereby invited to comment on environmental, social, and economic issues relating to the proposed project.

To comment or receive further information on the project, please register with Excel Dynamic Solutions (Pty) Ltd as an Interested & Affected Party, and have the opportunity to comment on the proposed project.

Contact: Mr. Mandume Leonard: Environmental Assessment Practitioner

Tel: +264(0)61 259 530

Email: mleonard@edsnamibia.com