



**Excel Dynamic Solutions**  
(PTY) Ltd

**Physical Address:** 112, Robert Mugabe Avenue, Windhoek

**Postal Address:** PO Box 997154 Maerua Mall, Windhoek

**Telephone:** +264 (0) 61 259 530

**Fax2email:** +264 (0) 886 560 836

**Email:** [info@edsnamibia.com](mailto:info@edsnamibia.com)

**Web:** [www.edsnamibia.com](http://www.edsnamibia.com)

## **Background Information Document (BID)**

**Project Name:**            **Environmental Assessment (EA) Study for the Proposed Establishment and Operation of a Truckport and Associated Facilities on Farm Otjiwarongo Townlands South No. 308 in the Otjozondjupa Region**

**Proponent:**                **Asterisk Investments CC**

**Environmental Consultant:** **Excel Dynamic Solutions Pty Ltd**

**March 2023**

## 1 INTRODUCTION: BACKGROUND

Asterisk Investments CC (hereinafter referred to as Asterisk Investments or the *Proponent*) proposes to establish (construct), operate, and maintain a truck port and associated infrastructure (facilities) on a six (6) -hectare (ha) piece of land Farm Otjiwarongo Townlands South No. 308 (the *project site*). The site is located about 5km south of Otjiwarongo in the Otjozondjupa Region (please refer to Figure 1). The proposed project will include a fuel filling station, a convenient store, retail (a shopping centre), accommodation, and ablution facilities with changing rooms for travelers.

It should however be noted that the proposed project includes activities that are listed in the 2012 Environmental Impact Assessment (EIA) Regulation of the Environmental Management Act (EMA) No. 7 of 2007 as activities that may not be undertaken without an Environmental Clearance Certificate (ECC). The listed activities as per EIA Regulations as relevant to the proposed development as associated facilities are listed below:

### “LISTED ACTIVITY 9: HAZARDOUS SUBSTANCE TREATMENT, HANDLING AND STORAGE

- 9.1 *The manufacturing, storage, handling or processing of a hazardous substance defined in the Hazardous Substances Ordinance, 1974.*
- 9.2 *Any process or activity which requires a permit, licence or other form of authorisation, or the modification of or changes to existing facilities for any process or activity which requires an amendment of an existing permit, licence or*

*authorisation or which requires a new permit, licence or authorisation in terms of a law governing the generation or release of emissions, pollution, effluent or waste.*

- 9.4 *The storage and handling of a dangerous goods, including petrol, diesel, liquid petroleum gas or paraffin, in containers with a combined capacity of more than 30 cubic meters at any one location*
- 9.5 *Construction of filling stations or any other facility for the underground and aboveground storage of dangerous goods, including petrol, diesel, liquid, petroleum, gas or paraffin.*

### LISTED ACTIVITY 6: TOURISM DEVELOPMENT ACTIVITIES

- *The construction of resorts, lodges, hotels or other tourism and hospitality facilities.”*

Subsequently, to fulfill the EMA requirements, Asterisk Investments appointed Excel Dynamic Solutions (Pty) Ltd (EDS), independent Environmental Consultants, to undertake an environmental assessment (EA) process.

The EA process will include undertaking the required EA process and submitting the ECC application to the Environmental Commissioner at the Department of Environmental Affairs and Forestry (DEAF) of the Ministry of Environment, Forestry & Tourism (MEFT) for evaluation and consideration of the ECC.

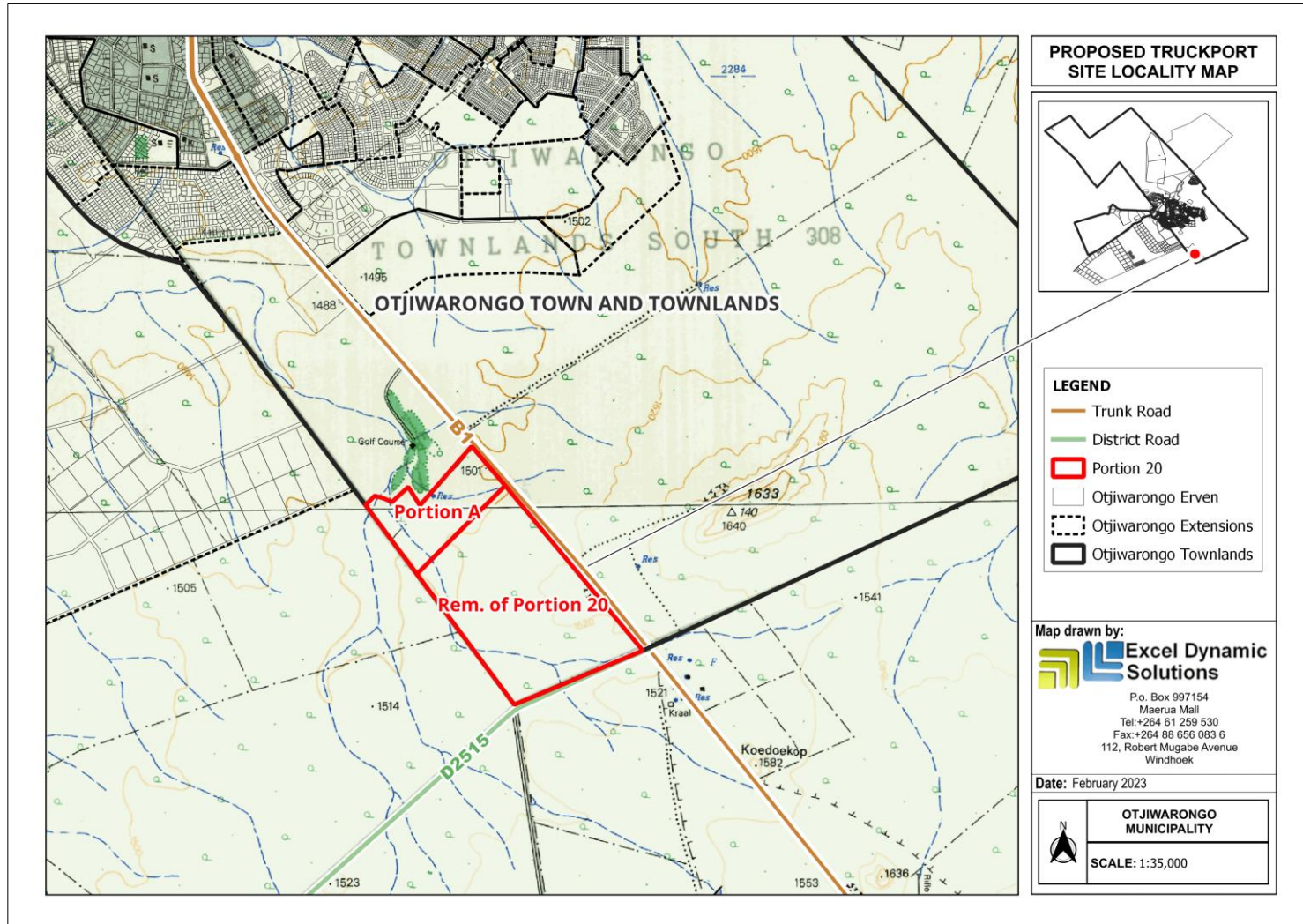


Figure 1: The locality map of the Truck port and associated facilities (infrastructure) near Otjiwarongo, Otjozondjupa Region

## 2 PURPOSE OF THIS DOCUMENT

This Background Information Document (BID) is a non-technical summary of the EA and not an EA Report, but aimed at sharing information with stakeholders as well as interested & parties (I&APs), and affording them an opportunity to raise issues, and submit comments about the proposed activities.

## 3 PROJECT DESCRIPTION

The proposed activities entail the construction of the truck port with its associated facilities and subsequent operations, as well as the maintenance of the site by the Proponent.

### 3.1 Project Activities: Construction

This is the stage during which the Proponent will prepare the site for the erection of structures and infrastructure as well as, the installation of services. The site preparation will entail earthworks, and where required remove the vegetation that is hindering the site preparation. There will be a movement of light and heavy vehicles associated with construction activities.

Duration: It is anticipated that construction work will take about 15 to 24 months, i.e., 1 year and 3 months to 2 years. The work will be carried out by an appointed construction contractor.

### 3.2 Project Activities: Operational and Maintenance

This is the phase during which the Truck port and the associated facilities will be operational and offering services to customers or clients such as tourists and travelers alike. The truck port structure will consist of two fuel tanks (unleaded and diesel), engine oils and lubricants. The associated facilities will include the following:

- Convenient Store: to be attached to the Truck port.
- Retail: shopping centre with a food court, shopping outlets, tourist curio and deli, grocer, and agri- business outlet.
- Accommodation: an overnight motel for road users / travelers.
- Ablution and change rooms to serve road users and tourists.

Maintenance of the site will be done by the Proponent's maintenance team. Alternatively, and where necessary, the maintenance work will be outsourced to an external maintenance contractor.

### 3.3 Human Resources, Services, and infrastructure

The following services and infrastructure as provided below will be required for the project activities:

- Human resources (and accommodation):

About 200 to 250 people will be employed onsite for construction. For the operational phase, 100 to 120 people will be required to work onsite. Since the site is merely 5km outside Otjiwarongo, the workforce will be commuting from Otjiwarongo.

Transport for the construction workers will be agreed upon, but most likely the construction contractor will be responsible for their workers. For the operational phase, the workers' transport from Otjiwarongo will be agreed upon and arrangements thereof. Therefore, no onsite accommodation for workers will be required.

- Water supply: the required water for the project will be sourced from a site borehole, and where needed, particularly during construction, water may be supplied by the (purchased from) Municipality of Otjiwarongo. The quantity or volume of water required is not yet known.

- Fuel Supply (Machinery and Equipment):

During construction, diesel powered machinery and equipment will be used, but the fuel quantities are not yet known. There will be a generator onsite during construction.

- Power supply: The site will be connected to the existing CENORED power grid for operations. Solar energy will also be utilized onsite.

- Accessibility (roads): The site will be accessed from the B1 via an off-ramp, and in compliance with the 100 meters building line restriction.

- Waste management: Sewage, solid waste, and hazardous waste produced onsite will be sorted accordingly, stored, and disposed of at appropriate waste facilities in Otjiwarongo.

- Health and Safety: Appropriate Personal Protective Equipment (PPE) will be provided to project personnel in all phases. During construction, the site will be equipped with one fully furnished first aid kit, which two (2) personnel will be trained to administer. At least two first aid kits will be onsite for the operational phase.

- Potential Accidental Fire Outbreaks: Fire extinguishers will be readily available in vehicles and at various operational sites such as offices, workshops, shops, motel, and other buildings on-site. Training on basic firefighting skills will be provided to some of the site personnel (workers). Two well-serviced fire extinguishers will be onsite during construction.

- Project Equipment, Material, Machinery, and

Vehicles: The construction will consist of two to three 4X4 pickup trucks (bakkies), two heavy trucks, a loader, water and fuel storage containers, a backup generator for power, etc.

#### **4 ENVIRONMENTAL ASSESSMENT**

This EA process is conducted in accordance with the provisions stated in the EMA and its EIA Regulations.

The primary objectives of the EA are to:

- Identify potential impacts associated with the proposed development or project activities.

## Asterisk Investments CC

- Inform I&APs and stakeholders about the project and provide them with an opportunity to participate during the EA process.
- Assess the significance of the issues and concerns raised.
- Compile an EA report addressing all identified issues and potential impacts.
- Compile a draft Environmental Management Plan (EMP) which includes impacts management and mitigation measures.

### 4.1 Potential Impacts

The following potential impacts have been identified:

#### 4.1.1 Positive Impacts

- Socio-economic development: temporary and long-term employment opportunities as well as procurement of locally available goods and services for the project in all phases.
- Boosting of local economic and regional economic development.
- Provision of accommodation and associated facilities for tourists and travelers alike.
- Provision of fuel (unleaded and diesel), engine oils, and lubricants.

#### 4.1.2 Negative impacts:

- Soil disturbance
- Pollution of soil and water resources from wastewater and effluent and hydrocarbons.
- Occupational health and safety risks
- Over-abstraction of water resources

## BID: Truck port & associated facilities

- Noise associated with project activities
- Waste generation
- Vehicular traffic safety
- Dust generation and emissions (impact on local air quality).

### 4.2 Public Consultation Registration

Public consultation is an important part of the EA process. In accordance with the EIA Regulations, the I&APs are afforded an opportunity to raise any issues or concerns pertaining to the project during consultation.

#### Ongoing Public Consultation and Facilitation -

The notice of the proposed project activities have been placed in two newspapers (*The Namibian* and *New Era*): 02 & 08 March 2023.

To comment or receive further information on the project, please register with Excel Dynamic Solutions (Pty) Ltd as an I&AP to be provided the opportunity to comment on the EA Report.

For comments and/or further information requests, please contact the EDS Consultant on the details provided below:

#### Environmental Assessment Practitioner:

Ms. Fredrika Shagama

Tel: +264 (0) 61 259 530

Email: [public@edsnamibia.com](mailto:public@edsnamibia.com)

[fshagama@edsnamibia.com](mailto:fshagama@edsnamibia.com)

**Cut-off date (deadline) for comments:** The request for registration as an I&AP and submission of comments should reach EDS before or on **Friday, the 07<sup>th</sup> of April 2023.**