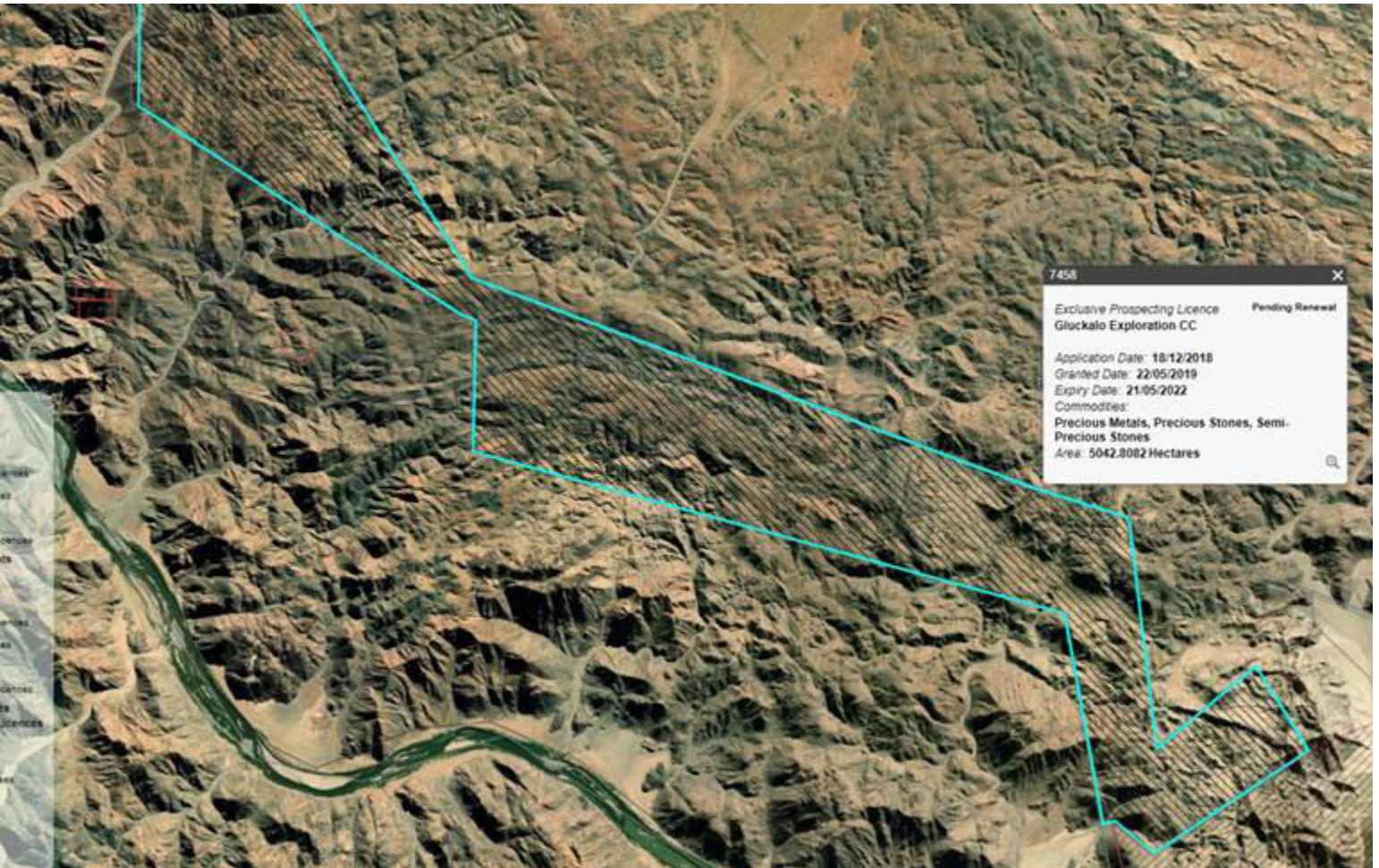


To: Saima.Angula@mefl.gov.na; damian.nchindo2@mefl.gov.na
Cc: Timoteus.Mufeti@mefl.gov.na; Caroline.Garus-Oas@mefl.gov.na; damian.nchindo2@mefl.gov.na; rolandm@ednamibia.com; 'Hilja' <hiljah@ednamibia.com>
Subject: EPL 7458 inaccessible for survey

Dear madam Saima, sir Damian

Kindly advise on how we go about your request for archeology survey (for consent) for this EPL 7458 . The archeologist and team came back and indicated the entire area is covered by high Namaqua Mountains north of Orange River, and could not get access to enter the EPL.

The MME minister has issued the proponent an intention to refuse renewal of his 2-EPLs (7458 and 7457). Your assistance will be highly appreciated.



Kind Regards,