

ENVIRONMENTAL SCOPING ASSESSMENT (ESA) FOR THE PROPOSED MINERAL EXPLORATION ACTIVITIES ON EXCLUSIVE PROSPECTING LICENCE (EPL) No. 7458 LOCATED NEAR NOORDOEWER, KARAS REGION, NAMIBIA

ENVIRONMENTAL ASSESSMENT – FINAL

ECC REFERENCE No.: APP- 001304

Author(s): Mr. Silas David	Client: Gluckalo exploration CC
Company: Excel Dynamic Solutions (Pty) Ltd	Contact person: Konstantin Zakhvatkin
Telephone: +264 (0) 61 259 530	Postal Address: P.O Box 0608, Pioneers Park, Namibia
Fax2email: +264 (0) 886 560 836	Cellphone: +79096953745
Email: public@edsnamibia.com	Email: zakhvatking@gmail.com

EXECUTIVE SUMMARY

Gluckalo Exploration CC (hereinafter referred to as the Proponent) applied for an Exclusive Prospecting Licence (EPL) No.7458 from the Ministry of Mines and Energy (MME) on 18th December 2018. The tenure of the EPL is from 22 May 2019 to 21 May 2022, however, the EPL is subjected to an Environmental Clearance Certificate, thus “pending Renewal”. The EPL covers a surface area of 5042.8082 hectares (ha) and is located about 55.92 km east of Noordoewer, //Karas Region, and cover (overlies) Farm Haakiesdoom No.137 and Kromrivier No.359. The commencement of prospecting and exploration activities on the EPL requires an Environmental Clearance Certificate (ECC).

The Proponent intends to conduct prospecting and exploration Precious Metals, Precious Stones, and Semi-Precious Stones.

According to Section 27 (1) of the Environmental Management Act (EMA), No. 7 of 2007, the proposed prospecting and exploration activities are among listed activities that may not be undertaken without an ECC under the Environmental Impact Assessment (EIA) Regulations. Subsequently, to ensure that the proposed activity is compliant with the national environmental legislation, the Proponent, appointed an independent environmental consultant, Excel Dynamic Solutions (Pty) Ltd to undertake the required Environmental Assessment (EA) process and apply for the ECC on their behalf.

The application for the ECC was compiled and submitted to the Ministry of Environment, Forestry & Tourism (MEFT), as a custodian for project registration. Upon submission of an Environmental Scoping Assessment (ESA) Report and Draft Environmental Management Plan (EMP), an ECC for the proposed project may be considered by the Environmental Commissioner at the MEFT’s Department of Environmental Affairs and Forestry (DEAF).

Brief Project Description

Planned Activities: Planned Activities: Proposed Exploration

The Proponent intends to adopt a systematic prospecting and exploration approach of the following:

1. Non-invasive Technique:

- **Desktop Study: Geological mapping:** This includes the review of geological maps of the area and on-site ground traverses and observations and an update where relevant, of the information obtained during previous geological studies of the area.
- **Lithology geochemical surveys:** Rock and soil samples may be collected and taken for analytical chemistry laboratories to determine the target commodity content. Soil samples consist of small pits ($\pm 20\text{cm} \times 20\text{cm} \times 30\text{cm}$) where 1kg samples can be extracted and sieved to collect 50g of material for submission to a laboratory.
- **Geophysical surveys:** This will entail data collection of the substrata (in most cases service of a ground geophysical contractor will be sourced), using sensors such as radar, magnetic and electromagnetic techniques to detect underground mineralization. Ground geophysical surveys be conducted by geophysical technicians with handheld instruments.

The Proponent, is therefore, required to ensure that the affected parties are consulted before the commencement of the ground surveys, during the prospecting phase of the proposed project.

2. Invasive Technique

- **Detailed Exploration Drilling:** Should the soil and/or the geophysical results be positive, drilling activities will commence and drill samples will be collected for further analysis. This will determine the grade and volume of the potential mineralization. Two widely used drilling options may be adopted, these are the Reverse Circulation (RC) drilling and/or diamond-core drilling. RC drilling uses a pneumatic hammer, which drives a rotating tungsten-steel bit. The technique produces an uncontaminated large volume sample, comprised of rock chips. It is relatively quicker and cheaper when compared to other techniques like Diamond Drilling. However, diamond drilling may also be considered for this exploration programme, during advanced stages of exploration if large amounts of sample material may be required for analysis and to perform processing trials.

The drilling site will consist of a drill-rig, drill core and geological samples store and a drill equipment parking and maintenance yard (including a fuel and lubricants storage facility).

The Proponent is required to ensure that the affected parties are consulted before any exploration work commences within the EPL and the mitigation measures stipulated in the Environmental Management Plan (EMP) must be adhered to.

Public Consultation

Regulation 21 of the EIA Regulations details the steps to be taken during a public consultation process and these have been used in guiding this process. The public consultation process assisted the Environmental Consultant in identifying all potential impacts and aided in the process of identifying possible mitigation measures and alternatives to certain project activities. The communication with I&APs about the proposed prospecting and exploration activities was done through the following means and in this order to ensure that the public is notified and are provided an opportunity to comment on the proposed project:

- A Background Information Document (BID) containing brief information about the proposed facility was compiled and emailed to relevant identified Interested and Affected Parties (I&APs) and new registered I&APs, upon request.
- Project Environmental Assessment notices were published in the Namibian and New Era Newspapers for two consecutive weeks (12th and 19th April 2023), briefly explaining the activity and its locality, inviting members of the public to register as I&APs and submit their comments/concerns.
- A consultation meeting was scheduled and held with interested parties on the 08th of June 2023 at Noordoewer Settlement Office.
- The issue and concerns raised during the meetings and site visit assessment/observation formed the basis for the ESA Report and EMP.

Potential Impacts identified

The following potential impacts are anticipated:

- **Positive impacts:** Socio-economic development through employment creation (primary, secondary, and tertiary employment) and skills transfer; opens up other investment opportunities and infrastructure-related development benefits; produces a trained workforce and small businesses that can service communities and may initiate related businesses; boosts the local economic growth and regional economic development and; increased support for local businesses through the procurement of consumable items such as Personal Protective Equipment (PPE), machinery spare parts, lubricants, etc.
- **Negative impacts:** Physical land/soil disturbance; Impact on local biodiversity (fauna and flora); habitat disturbance and potential illegal wildlife in the area; potential impact on water resources and soils particularly due to pollution; air quality issue: potential dust generated from the project; potential occupational health and safety risks, vehicular traffic safety and impact on services infrastructure such as local roads, vibrations and noise associated with drilling activities may be a nuisance to locals; environmental pollution (solid waste and wastewater) and potential social nuisance and conflicts (theft, damage to properties, etc.).

The potential negative impacts were assessed, and mitigation measures were provided accordingly.

CONCLUSIONS AND RECOMMENDATIONS

Conclusions

The potential impacts that are anticipated from the proposed project activities were identified, described, and assessed. For the significant adverse (negative) impacts with medium project-related rating, appropriate management and mitigation measures were recommended for implementation by the Proponent, and all project-related employees.

The public was consulted as required by the EMA and its 2012 EIA Regulations (Section 21 to 24). This was done via the two newspapers (New Era and The Namibian) used for this environmental assessment. A consultation through face-to-face meeting with I&APs at Noordoewer Settlement Office was conducted, whereby the I&APs raised comments and concerns on the proposed project activities.

The issues and concerns received on the 08th of June 2023, together with the site visit assessment which was conducted on the 08 June 2023 formed the basis of this Report and the Draft EMP. The issues raised were addressed and incorporated into this Report whereby mitigation measures

have been provided thereof to avoid and/or minimize their significance on the environmental and social components. Most of the potential impacts were found to be of medium rating significance. With the effective implementation the recommended management and mitigation measures, this will particularly see the reduction in the significance of adverse impacts that cannot be avoided completely (from medium rating to low). To maintain the desirable rating, the implementation of management and mitigation measures should be monitored by the Proponent directly, or their Environmental Control Officer (ECO) is highly recommended. The monitoring of this implementation will not only be done to reduce the impacts' rating or maintain low rating but also to ensure that all potential impacts identified in this study and other impacts that might arise during the implementation are properly identified in time and addressed right away too.

It is vital for the Proponent and their contractors to effectively implement the recommended management and mitigation measures to protect both the biophysical and social environment throughout the project duration. All these would be done with the aim of promoting environmental sustainability while ensuring a smooth and harmonious existence and purpose of the project activities in the community and environment at large. However, if an ECC is to be issued, the ECC should be issued on a condition that the provided management measures and action plans are effectively implemented on site and monitored. Most importantly, monitoring of the environmental components described in the impact assessment chapter should be conducted by the Proponent and applicable Competent Authority. This is to ensure that all potential impacts identified in this study and other impacts that might arise during the exploration are properly identified in time and addressed. Lastly, should the ECC be issued, the Proponent will be expected to be compliant with the ECC conditions as well as legal requirements governing the mineral exploration and related activities, including;

- Furnishing the MEFT and MME with an environmental report every six (6) months
- Carrying out and submission of an annual Environmental Audit to the MEFT and MME

Recommendations

The Environmental Consultant is confident that the potential negative impacts associated with the proposed project activities can be managed and mitigated by the effective implementation of the recommended management and mitigation measures and with more effort and commitment put on monitoring the implementation of these measures.

It is therefore, recommended that the proposed prospecting and exploration activities be granted an ECC, and provided that:

- All the management and mitigation measures provided herein are effectively and progressively implemented.
- All required permits, Licenses and approvals for the proposed activities should be obtained as required. These include permits and Licenses for land use access agreements to prospect and explore and ensuring compliance with these specific legal requirements.
- The Proponent and all their project workers or contractors comply with the legal requirements governing their project and its associated activities and ensure that project permits and or approvals required to undertake specific site activities are obtained and renewed as stipulated by the issuing authorities.
- Site areas where exploration activities have ceased are rehabilitated, as far as practicable, to their pre-exploration state.
- Environmental Compliance monitoring reports should be compiled and submitted to the DEAF (MEFT / DEAF).

Disclaimer

EDS warrants that the findings and conclusion contained herein were accomplished in accordance with the methodologies set forth in the Scope of Work and Environmental Management Act (EMA) of 2007. These methodologies are described as representing good customary practice for conducting an Environmental Impact Assessment of a property for the purpose of identifying recognized environmental conditions. There is a possibility that even with the proper application of these methodologies there may exist on the subject property conditions that could not be identified within the scope of the assessment, or which were not reasonably identifiable from the available information. The Consultant believes that the information obtained from the record review and during the public consultation processes concerning the proposed exploration work is reliable. However, the Consultant cannot and does not warrant or guarantee that the information provided by the other sources is accurate or complete. The conclusions and findings set forth in this report are strictly limited in time and scope to the date of the evaluations. No other warranties are implied or expressed.

Some of the information provided in this report is based upon personal interviews, and research of available documents, records, and maps held by the appropriate government and private

agencies. This report is subject to the limitations of historical documentation, availability, and accuracy of pertinent records, and the personal recollections of those persons contacted.

TABLE OF CONTENTS

EXECUTIVE SUMMARY	ii
LIST OF FIGURES.....	xi
LIST OF TABLES.....	xi
LIST OF APPENDICES.....	xii
LIST OF ABBREVIATIONS	xii
1. INTRODUCTION.....	17
1.1 Project Background.....	17
1.2 Terms of Reference, Scope of Works and Appointed of an Environmental Assessment Practitioner.....	19
1.3 Motivation for the Proposed Project	19
2. PROJECT DESCRIPTION: PROPOSED EXPLORATION ACTIVITY	20
2.1 Prospecting Phase	20
2.2 Exploration (Drilling, Sampling and Analysis) Phase.....	21
2.2.1 Detailed Exploration Drilling.....	21
2.4 Decommissioning and Rehabilitation Phase	24
3. PROJECT ALTERNATIVES.....	24
3.1 Types of Alternatives Considered.....	24
3.1.1 The "No-go" Alternative	24
3.1.2 Exploration Location	25
3.1.3 Exploration Methods	26
4. LEGAL FRAMEWORK: LEGISLATION, POLICIES AND GUIDELINES	27
4.1 The Environmental Management Act (No. 7 of 2007)	27
5. ENVIRONMENTAL BASELINE.....	39
5.1 Biophysical Environment	39

Climate.....	39
5.1 Topography and Landscape.....	41
5.2 Geology and Soil.....	41
5.3 Hydrology and Water Resources.....	43
5.4 Flora and Fauna.....	44
5.5 Surrounding Land Uses.....	46
5.6 Heritage and Archaeology.....	47
5.7 Socio-economic condition.....	47
6. PUBLIC CONSULTATION PROCESS.....	48
6.1 Pre-identified and Registered Interested and Affected Parties (I&APs).....	48
6.2 Communication with I&APs.....	49
7. IMPACT IDENTIFICATION, ASSESSMENT AND MITIGATION MEASURES.....	52
7.1 Impact Identification.....	52
7.2 Impact Assessment Methodology.....	53
7.2.1 Extent (spatial scale).....	54
7.2.2 Duration.....	54
7.2.3 Intensity, Magnitude / severity.....	54
7.2.4 Probability of occurrence.....	55
7.2.5 Significance.....	56
7.3 Assessment of Potential Negative Impacts.....	58
7.3.1 Land Degradation and Loss of Biodiversity.....	58
7.3.2 Generation of Dust (Air Quality).....	59
7.3.3 Water Usage.....	59
7.3.4 Soil and Water Resources Pollution.....	60
7.3.5 Waste Generation.....	61
7.3.6 Occupational Health and Safety Risks.....	61

7.3.7 Vehicular Traffic Use and Safety	62
7.3.8 Noise and vibrations	63
7.3.9 Disturbance to Archaeological and Heritage Resources.....	63
7.4 Cumulative Impacts Associated with Proposed Exploration.....	64
7.5 Mitigations and Recommendations for Rehabilitation	65
8. CONCLUSIONS AND RECOMMENDATIONS	65
8.1 Conclusions.....	65
8.2 Recommendations	66
9. REFERENCES	68

LIST OF FIGURES

Figure 1: Locality map for EPL No. 7458 located near Noordoewer, Karas Region	18
Figure 2: Status and location of the EPL on the MME mining cadastre	26
Figure 3: Shows the climate condition around the project area, Noordoewer (source: https://www.besttimetovisit.co.uk/namibia/noordoewer-4027146/)	40
Figure 4 (a): Topography of project area.....	41
Figure 5: A map of the general geology of the project area	42
Figure 6: Shows the dominant soil types found within the EPL	43
Figure 7: Shows the groundwater and surface Water System map.....	44
Figure 8: Shows the vegetation map for the project area	45
Figure 9: EPL 7458 Land Use Map	47
Figure 10: Public Site Notice placed at Noordoewer Settlement Office	50
Figure 11: Public meeting held at Noordoewer Settlement Office, 08 June 2023	51

LIST OF TABLES

Table 1: Applicable local, national and international standards, policies and guidelines governing the proposed development.....	27
---	----

Table 2: International Policies, Principles, Standards, Treaties and Convention applicable to the project	34
Table 3: Summary of Interested and Affected Parties (I&APs)	48
Table 4: Summary of main issues and comments received during the public meeting	51
Table 5: Extent or spatial impact rating	54
Table 6: Duration impact rating.....	54
Table 7: Intensity, magnitude or severity impact rating	55
Table 8: Probability of occurrence impact rating.....	55
Table 9: Significance rating scale.....	56
Table 10: Assessment of the impacts of exploration on biodiversity	58
Table 11: Assessment of the impacts of exploration on air quality	59
Table 12: Assessment of the project impact on water resource use and availability	60
Table 13: Assessment of the project impact on soils and water resources (pollution).....	60
Table 14: Assessment of waste generation impact	61
Table 15: Assessment of the impacts of exploration on health and safety	62
Table 16: Assessment of the impacts of exploration on road use (vehicular traffic)	62
Table 17: Assessment of the impacts of noise and vibrations from exploration	63
Table 18: Assessment of the impacts of exploration on archaeological & heritage resources....	64
Table 19: Assessment of social impact of community property damage or disturbance	64

LIST OF APPENDICES

Appendix A: Copy of the Environmental Clearance Certificate (ECC) Application Form 1

Appendix B: Draft Environmental Management Plan (EMP)

Appendix C: Curricula Vitae (CV) for the Environmental Assessment Practitioner (EAP)

Appendix D: Proof of public consultations

Appendix E: Mineral Licence for EPL 7458

LIST OF ABBREVIATIONS

Abbreviation	Meaning
AMSL	Above Mean Sea Level
BID	Background Information Document
CV	Curriculum Vitae
DEA	Department of Environmental Affairs
EA	Environmental Assessment
EAP	Environmental Assessment Practitioner
ECC	Environmental Clearance Certificate
EDS	Excel Dynamic Solutions
ESA	Environmental Scoping Assessment
EMA	Environmental Management Act
EMP	Environmental Management Plan
EPL	Exclusive Prospecting Licence
GG	Government Gazette
GN	Government Notice
I&APs	Interested and Affected Parties
MEFT	Ministry of Environment, Forestry and Tourism
MME	Ministry of Mines and Energy
PPE	Personal Protective Equipment
Reg	Regulation
S	Section
TOR	Terms of Reference

DEFINITION OF TERMS

Alternative	A possible course of action, in place of another that would meet the same purpose and need of the proposal.
Baseline	Work done to collect and interpret information on the condition/trends of the existing environment.
Biophysical	That part of the environment that does not originate with human activities (e.g. biological, physical and chemical processes).
Cumulative Impacts/Effects Assessment	In relation to an activity, means the impact of an activity that in it may not be significant but may become significant when added to the existing and potential impacts eventuating from similar or diverse activities or undertakings in the area.
Decision-maker	The person(s) entrusted with the responsibility for allocating resources or granting approval to a proposal.
Ecological Processes	Processes which play an essential part in maintaining ecosystem integrity. Four fundamental ecological processes are the cycling of water, the cycling of nutrients, the flow of energy and biological diversity (as an expression of evolution).
Environment	As defined in Environmental Management Act - the complex of natural and anthropogenic factors and elements that are mutually interrelated and affect the ecological equilibrium and the quality of life, including – (a) the natural environment that is land, water and air; all organic and inorganic matter and living organisms and (b) the human environment that is the landscape and natural, cultural, historical, aesthetic, economic and social heritage and values.

Environmental Management Plan	As defined in the EIA Regulations (Section 8(j)), a plan that describes how activities that may have significant environmental effects are to be mitigated, controlled and monitored.
Exclusive Prospecting Licence	Is a Licence that confers exclusive mineral prospecting rights over land of up to 1000 km ² in size for an initial period of three years, renewable twice for a maximum of two years at a time.
Interested and Affected Party (I&AP)	In relation to the assessment of a listed activity includes - (a) any person, group of persons or organization interested in or affected by an activity; and (b) any organ of state that may have jurisdiction over any aspect of the activity. Mitigate - practical measures to reduce adverse impacts. Proponent – as defined in the Environmental Management Act, a person who proposes to undertake a listed activity. Significant impact - means an impact that by its magnitude, duration, intensity or probability of occurrence may have a notable effect on one or more aspects of the environment.
Fauna	All of the animals found in a given area.
Flora	All of the plants found in a given area.
Mitigation	The purposeful implementation of decisions or activities that are designed to reduce the undesirable impacts of a proposed action on the affected environment.
Monitoring	Activity involving repeated observation, according to a pre-determined schedule, of one or more elements of the environment to detect their characteristics (status and trends).
Nomadic Pastoralism	Nomadic pastoralists live in societies in which the husbandry of grazing animals is viewed as an ideal way of making a living and the regular movement of all or part of the society is considered a normal and natural part of life. Pastoral nomadism is commonly found where climatic conditions produce seasonal pastures but cannot support sustained agriculture.
Proponent	Organization (private or public sector) or individual intending to implement a development proposal.

Public Consultation/Involvement	A range of techniques that can be used to inform, consult or interact with stakeholders affected by the proposed activities.
Protected Area	Refers to a protected area that is proclaimed in the Government Gazette according to the Nature Conservation Ordinance number 4 of 1975, as amended
Scoping	An early and open activity to identify the impacts that are most likely to be significant and require specialized investigation during the EIA work. Can, also be used to identify alternative project designs/sites to be assessed, obtain local knowledge of site and surroundings and prepare a plan for public involvement. The results of scoping are frequently used to prepare a Terms of Reference for the specialized input into full EIA.
Terms of Reference (ToR)	Written requirements governing full EIA input and implementation, consultations to be held, data to be produced and form/contents of the EIA report. Often produced as an output from scoping.

1. INTRODUCTION

1.1 Project Background

Gluckalo Exploration CC (the Proponent) applied for an Exclusive Prospecting Licence (EPL) No.7458 from the Ministry of Mines and Energy (MME) on 18 December 2018. The tenure of the EPL is from 22 May 2019 to 21 May 2022, however, the EPL is subjected to an Environmental Clearance Certificate, thus “pending renewal”. The EPL cover a surface area of 5042.8082 hectares (ha) and is located about 55.92 km east of Noordoewer, //Karas Region (**Figure 1**), and cover (overlies) Farm Haakiesdoorn No.137 and Kromrivier No. 359.

The target commodities for this project are Precious Metals, Precious Stones, Semi-Precious Stones.

Section 27 (1) of the Environmental Management Act (EMA) (No. 7 of 2007) and its 2012 Environmental Impact Assessment (EIA) Regulations, provides a list of activities that may not be carried out without an Environmental Impact Assessment (EIA) undertaken and an ECC obtained. Prospecting and exploration activities are listed among activities that may not occur without an ECC. Therefore, individuals or organizations may not carry out exploration activities without an EIA undertaken and an ECC awarded.

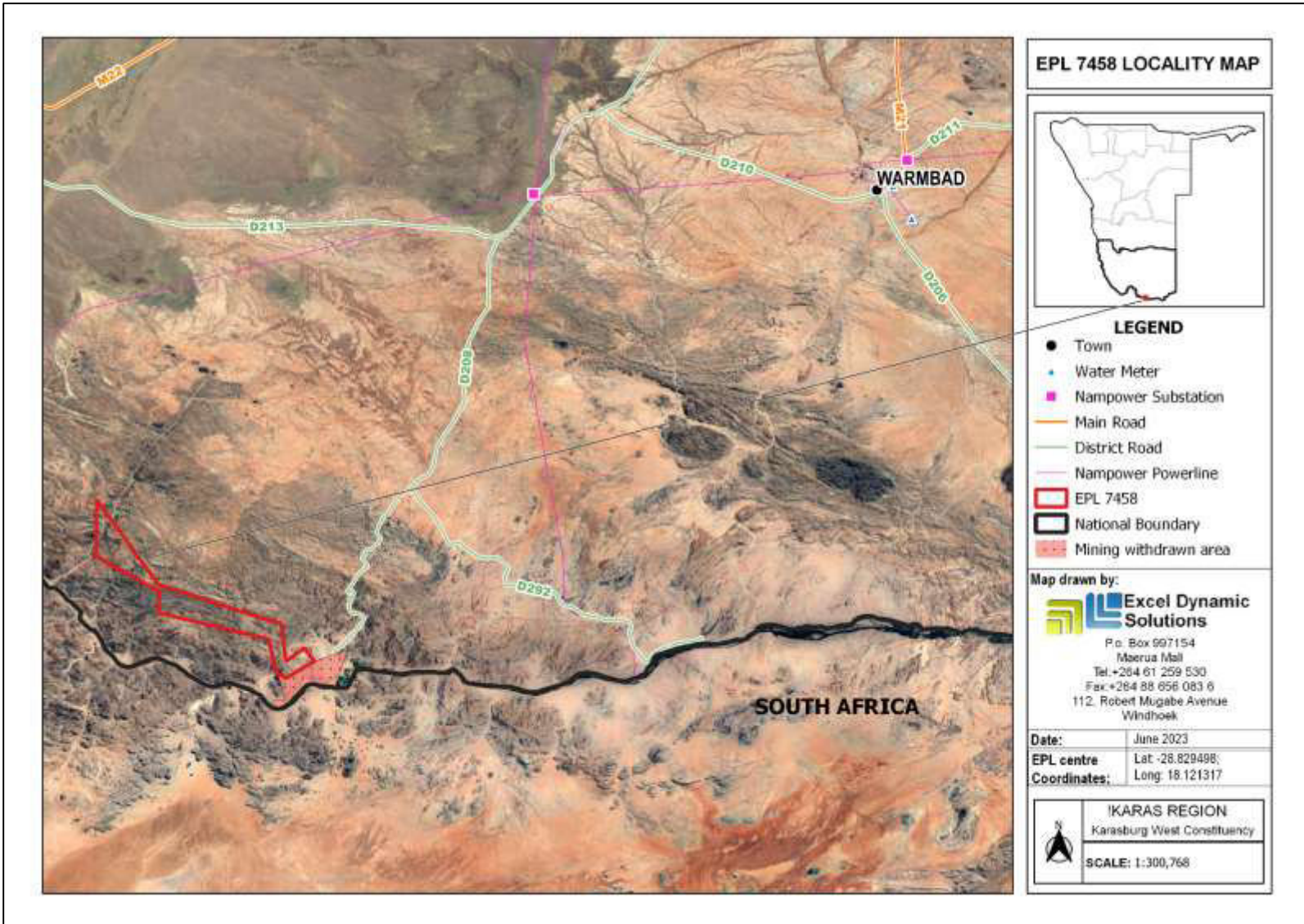


Figure 1: Locality map for EPL No. 7458 located near Noordoewer, Karas Region

1.2 Terms of Reference, Scope of Works and Appointed of an Environmental Assessment Practitioner

Excel Dynamic Solutions (Pty) Ltd (EDS) has been appointed by the Proponent to undertake an environmental assessment (EA), and thereafter, apply for an ECC for exploration work on the EPL. There were no formal Terms of Reference (ToR) provided to EDS by the Proponent. The consultant, instead, relied on the requirements of the Environmental Management Act (No. 7 of 2007) (EMA) and its Environmental Impact Assessment (EIA) Regulations (GN. No. 30 of 2012) to conduct the study.

The application for the ECC was compiled and submitted to the Ministry of Environment, Forestry and Tourism (MEFT), the environmental custodian for project registration purposes. Upon submission of an Environmental Scoping Assessment (ESA) Report and Draft Environmental Management Plan (EMP), an ECC for the proposed project might be considered by the Environmental Commissioner at the MEFT's Department of Environmental Affairs and Forestry (DEAF).

The EIA project is headed by Mr. Nerson Tjelos. The consultation process and reporting were done by Mr. Silas David, EAP CV is presented in **Appendix C**.

1.3 Motivation for the Proposed Project

The mining industry is one of the largest contributors to the Namibian economy. It contributes to the improvement of livelihoods. In Namibia, exploration for minerals is undertaken mainly by the private sector. Mineral exploration has great potential to enhance and contribute to the development of other sectors, and its activities provide temporary employment, as well as taxes that fund social infrastructural development. The minerals sector yields foreign exchange and account for a significant portion of gross domestic product (GDP). Additionally, the industry produces a trained workforce and small businesses that can serve communities and may initiate related businesses. Exploration activities fosters several associated activities such as manufacturing of exploration and mining equipment, and provision of engineering and environmental services.

The mining sector forms a vital part of some of Namibia's development plans, namely: Vision 2030, National Development Plan 5 (NDP5) and the Harambee Prosperity Plans (HPPs) I and II. Mining of minerals locally is essential to the developmental goals of Namibia in aim of contributing to the ever-increasing global demand for minerals, and for national prosperity. Therefore, successful prospective and exploration on EPL 7458 would lead to the mining of the target commodity, which could contribute towards achieving the goals of the national development plans.

2. PROJECT DESCRIPTION: PROPOSED EXPLORATION ACTIVITY

Prospecting and exploration of minerals are the first components of any potential mining related project. This is done to acquire the necessary data required for further decision making and investment options. These activities are anticipated to last for about three years once an ECC has been issued. The exploration process includes three phases - prospecting, exploration, and the decommissioning of works.

2.1 Prospecting Phase

2.1.1 Desktop Study: Geological mapping

This mainly entails a desktop review of geological area maps; study of previous historical geological and mineral exploration works by previous prospectors around the vicinity of the EPL area and attempts to re-evaluate and/or reinterpret these results.

2.1.2 Geophysical surveys

Geophysical surveys entail data collection of the substrate by air or ground, through sensors such as radar, magnetic and/or electromagnetic sensors, to detect and ascertain any mineralization in the area. Ground geophysical surveys shall be conducted, where necessary, using vehicle-mounted sensors or handheld sensors, while in the case of air surveys, the sensors are mounted to an aircraft, which navigates over the target area.

2.1.3 Lithology geochemical surveys

Rock and soil samples are collected and taken for trace element analysis by analytical chemistry laboratories, to determine if sufficient amounts of the target commodities are present. Additionally,

trenches or pits may be dug, depending on the commodity (in a controlled environment e.g., fencing off and labelling activity sites), to further investigate the mineral potential.

Soil sampling entails digging of small pits, where 1kg samples can be extracted and sieved to collect about 50g of material. As necessary, and to ensure adequate risk mitigation, all major excavations will be closed immediately after obtaining the needed samples, or the sites will be secured until the trenches or pits are closed. Where necessary, the landowner and other relevant stakeholders will be engaged to obtain authorization.

The Proponent, is therefore required to ensure that affected parties are consulted before the prospecting phase commences within the EPL. The Proponent should obtain written consent to conduct prospecting work from the affected parties.

2.2 Exploration (Drilling, Sampling and Analysis) Phase

The selection of the potential mineralization model and exploration targets is based on the local geology, trenching, drilling, and assay results of the samples collected. The planned exploration activities are aimed at delineating the mineral deposits and to determine whether the deposits are economically feasible mining resources.

2.2.1 Detailed Exploration Drilling

Should analyses by an analytical laboratory yield positive results, holes are drilled, and drill samples collected for further analysis. This will determine the depth of the potential mineralization. If necessary new access tracks to the drill sites will be created and drill pads in which to set the rig, will be cleared. Two widely used drilling options may be adopted, these are the Reverse Circulation (RC) drilling and/or Diamond (Core) drilling.

RC drilling uses a pneumatic hammer, which drives a rotating tungsten-steel bit. The technique produces an uncontaminated large volume sample, which is composed of rock chips. It is relatively quicker and cheaper when compared to other techniques like Diamond Drilling. However, diamond drilling may also be considered for this exploration programme, during advanced stages of exploration, if large amounts of sample material may be required for analysis and to perform processing trials.

The Proponent is required to ensure the affected parties are consulted before any exploration activities commences within EPL 7458.

2.3 Other aspects of the proposed exploration operations include:

2.3.1 Accessibility to Site

The EPL is accessible via the B8 road from Noordoewer, which connects to the D213 and D208 road leading to the EPL area. Project related vehicles will be using these existing roads to access the EPL.

2.3.2 Material and Equipment

The input required for the exploration program in terms of vehicles and equipment includes: 4X4 vehicles, truck, drill rigs, excavator / front-end loader, dozer/s, drilling fluids stored in manufacturers approved containers, air compressors, generator for power supply. Equipment and vehicles will be stored at a designated area near the accommodation site, or a storage site established within the EPL area.

2.3.3 Services and Infrastructure

Water: About 3 000 liters of water will be required per month for exploration activities. This water will be used for cooling down and washing equipment, drilling-related activities, and ablution. Potable water will also be made available for the exploration crew on site. The water will be sourced from elsewhere (Upon acquiring all the required permit and reaching agreement with relevant authorities) and transported to the site.

Power supply: Power required during the operation phase will be provided from diesel-generators. About 2,500 litres of diesel will be used per day, a bunded diesel bowser which will be on site, will be filled 2 – 3 times a week by a diesel bowser.

Fuel (diesel for generators and other equipment): The fuel (diesel) required for exploration equipment will be stored in a tank mounted on a mobile trailer, and drip trays will be readily available on this trailer and monitored to ensure that accidental fuel spills are cleaned up as soon as they have been detected/observed. Fuel may also be stored in jerry cans placed on plastic sheeting to avoid unnecessary contamination of the ground.

2.3.4 Waste Management

The site will be equipped with secured waste bins for each type of waste (i.e., general and hazardous). Depending on the amount generated, waste will be sorted and collected as often as

necessary and taken to the nearest certified landfill site. An agreement will need to be reached with different waste management facility operators/owners and authorization or permits will be obtained prior to utilizing these facilities, in the case of production of any hazardous waste.

Sanitation and human waste: Mobile chemical ablution facilities will be provided on-site. The wastewater will be transported offsite to the treatment facility either by the designated/appointed external waste management contractor.

Hazardous waste: Drip trays and spill control kits will be available on site to ensure that oil/fuel spills and leaks from vehicles and equipment are captured on time and contained correctly before polluting the site.

2.3.5 Health and safety

The Proponent should ensure that adequate and appropriate Personal Protective Equipment (PPE) is provided to every project personnel while working on site.

A minimum of three first aid kits will be readily available on site to attend to potential minor injuries.

2.3.6 Safety and Security

Storage Site: Temporary storage areas for exploration material, equipment and machinery will be required at the campsite and/or exploration sites. Security will be supplied on a 24-hour basis at the delegated sites for storage. A temporary support fence will be constructed around the storage site to ensure animals are not put at risk.

Fire management: A minimum of basic firefighting equipment, i.e., three fire extinguishers will be readily available in vehicles, at the working sites and camps.

2.3.7 Accommodation

The exploration workforce will be accommodated in Noordoewer, upon reaching written agreement between the Proponent and the respective custodian before setting up accommodation structures (tented camps). Exploration activities will take place during daytime only and staff will commute to exploration site(s) from their place of accommodation.

2.4 Decommissioning and Rehabilitation Phase

Once the exploration activities on the EPL come to an end, the Proponent will need to put site rehabilitation measures in place. Decommissioning and rehabilitation are primarily reinforced through a decommissioning and rehabilitation plan, which consists of safety, health, environmental, and contingency aspects. An unfavorable economic situation or unconvincing exploration results might force the Proponent to cease the exploration program before predicted closure. Therefore, it is of best practice for the Proponent to ensure the project activities cease in an environmentally friendly manner and site is rehabilitated.

3. PROJECT ALTERNATIVES

Alternatives are defined as the “*different means of meeting the general purpose and requirements of the activity*” (EMA, 2007). This section will highlight the different ways in which the project can be undertaken and to identify the alternative that will be the most practical, but least damaging to the environment is identified.

Once the alternatives have been established, these are examined by asking the following three questions:

- What alternatives are technically and economically feasible?
- What are the environmental effects associated with the feasible alternatives?
- What is the rationale for selecting the preferred alternative?

The alternatives considered for the proposed development are discussed in the following subsections.

3.1 Types of Alternatives Considered

3.1.1 The "No-go" Alternative

The “no action” alternative implies that the status quo remains, and no prospecting and exploration activity occur on site. Should the proposal of exploration activities on the EPL be discontinued, none of the potential impacts (positive and negative) identified, would occur. If the

proposed project is to be discontinued, the current land use for the proposed site will remain unchanged.

The no-go option was considered and a comparative assessment of the environmental and socio-economic impacts of the “no action” alternative was undertaken to establish what benefits might be lost if the project is not implemented. The key losses that may never be realized if the proposed project does not go ahead include:

- Loss of foreign direct investment.
- About 5 – 10 temporary job opportunities for community members will not come to realization.
- No realization of local businesses supports through the procurement of consumable items such as Personal Protective Equipment (PPE), machinery spare parts, lubricants, etc.
- Loss of potential income to local and national government through land lease fees, Licences lease fees and various tax structures.
- Improved geological understanding of the site area regarding the targeted commodities.
- Socio-economic benefits such as skills acquisition to local community members would be not realized.

Considering the above losses, the “no-action/go” alternative is considered a viable option for the project, although, in the case where parts of the EPL are considered environmentally sensitive and/or protected, one or severally sections of the site may be identified as no-go zones.

3.1.2 Exploration Location

The prospecting/exploration location is dependent on the geological setting (regional and local), the economic geology, and the exploration and mining history of the EPL area. The mineralization of the target commodities is area-specific, and exploration targets are primarily determined by the geology (host rocks) and the tectonic environment of the site (an ore-forming mechanism). Therefore, finding an alternative location for the planned exploration activities is not possible. The tenement has sufficient surface area for related facilities, should an economic mineral deposit be defined.

Furthermore, the potential locations of national mineral resources are mapped and categorized by the Ministry of Mines and Energy on the Namibia Mining Cadastral Map. The mining cadastre

contains information on Exclusive Prospecting Licenses, Mining Claims and Licenses, Mineral Deposit Retention Licenses, Reconnaissance Licenses and Exclusive Reconnaissance Licenses. Information on EPL 7458 (**Figure 2**) and other licenses are available on the Namibia Mining Cadastral Map (<https://portals.landfolio.com/namibia/>).

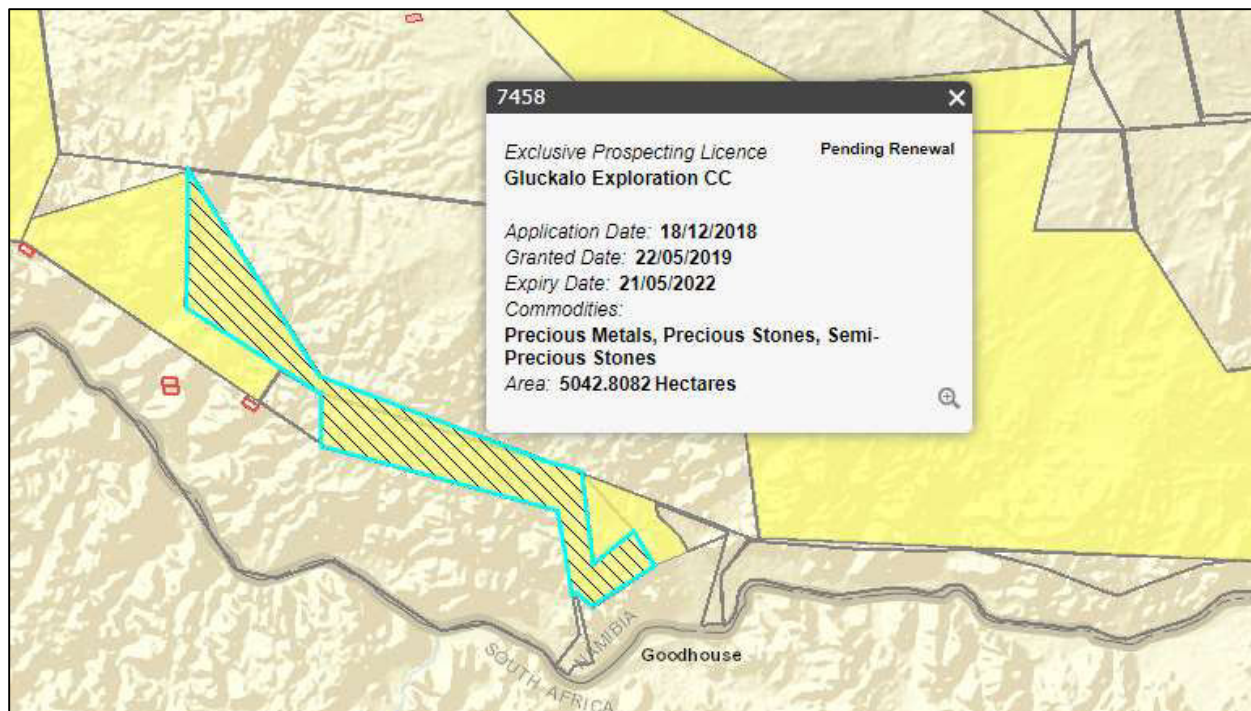


Figure 2: Status and location of the EPL on the MME mining cadastre

3.1.3 Exploration Methods

It is anticipated that the invasive exploration methods will be utilized. If any other alternative viable exploration methods other than those described in this report are found to achieve the purpose more effectively and/or efficiently without aggravating any environmental measures put in place, they be implemented.

4. LEGAL FRAMEWORK: LEGISLATION, POLICIES AND GUIDELINES

Prospecting and exploration activities have legal implications associated to certain applicable legal standards. A summary of applicable and relevant international policies and Namibian legislation, policies and guidelines to the proposed development is given in this section. This summary serves to inform the project Proponent, Interested and Affected Parties and the decision makers at the DEAF, of the requirements and expectations, as laid out in terms of these instruments, to be fulfilled to establish the proposed prospecting and exploration activities.

4.1 The Environmental Management Act (No. 7 of 2007)

This ESA was carried out according to the Environmental Management Act (EMA) (Act No. 7 of 2007) and its Environmental Impact Assessment (EIA) Regulations (GG No. 4878 GN No. 30).

The EMA has stipulated requirements to complete the required documentation to obtain an Environmental Clearance Certificate (ECC) for permission to undertake certain listed activities. These activities are listed under the following Regulations:

3.1 The construction of facilities for any process or activities which requires a Licences, right of other forms of authorization, and the renewal of a Licences, right or other form of authorization, in terms of the Minerals (Prospecting and Mining Act, 1992).

3.2 other forms of mining or extraction of any natural resources whether regulated by law or not.

3.3 Resource extraction, manipulation, conservation and related activities.

Other legal obligations that are relevant to the proposed activities of EPL No. 7458 and related activities are presented in **Table 1**.

Table 1: Applicable local, national and international standards, policies and guidelines governing the proposed development

Legislation/Policy/ Guideline	Relevant Provisions	Implications for this project
<p>The Constitution of the Republic of Namibia, 1990 as amended</p>	<p>The Constitution of the Republic of Namibia (1990 as amended) addresses matters relating to environmental protection and sustainable development. Article 91(c) defines the functions of the Ombudsman to include:</p> <p>“...the duty to investigate complaints concerning the over-utilization of living natural resources, the irrational exploitation of non-renewable resources, the degradation and destruction of ecosystems and failure to protect the beauty and character of Namibia...”</p> <p>Article 95(l) commits the state to actively promote and maintain the welfare of the people by adopting policies aimed at the:</p> <p>“...Natural resources situated in the soil and on the subsoil, the internal waters, in the sea, in the continental shelf, and in the exclusive economic zone are property of the State.”</p>	<p>By implementing the environmental management plan, the establishment will be in conformant to the constitution in terms of environmental management and sustainability.</p> <p>Ecological sustainability will be main priority for the proposed development.</p>
<p>The National Policy on Prospecting and Mining in Protected Areas</p>	<p>Requires that, where necessary a Memorandum of Understanding is developed between prospecting and mining Companies, the MEFT and the MME to set out additional implementation mechanisms.</p>	<p>The Proponent should maintain the integrity of ecosystems and natural resources, and avoiding degradation of areas highly sensitive for their ecological, social and/or cultural heritage value.</p>

Legislation/Policy/ Guideline	Relevant Provisions	Implications for this project
<p>Minerals (Prospecting and Mining) Act (No. 33 of 1992)</p>	<p>Section 52 requires mineral Licenses holders to enter into a written agreement with affected landowners before exercising rights conferred upon the Licenses holder.</p> <p>Section 52(1) mineral Licenses holder may not exercise his/her rights in any town or village, on or in a proclaimed road, land utilized for cultivation, within 100m of any water resource (borehole, dam, spring, drinking trough etc.) and boreholes, or no operations in municipal areas, etc.), which should individually be checked to ensure compliance.</p> <p>Section 54 requires written notice to be submitted to the Mining Commissioner in the event that the holder of a mineral Licenses (which includes an EPL) intends to abandon the mineral Licenses area.</p> <p>Section 68 stipulates that an application for an EPL shall contain the particulars of the condition of, and any existing damage to, the environment in the area to which the application relates and an estimate of the effect which the proposed prospecting operations may have on the environment and the proposed steps to be taken in order to prevent or minimize any such effect.</p>	<p>The Proponent should enter into a written agreement with landowners before carrying out exploration.</p> <p>The Proponent should carry out an assessment of the impact on the receiving environment.</p> <p>The Proponent should include as part of their application for the EPL, measures by which they will rehabilitate the areas where they intend to carry out mineral exploration activities.</p> <p>The Proponent may not carry out exploration activities within the areas limited by Section 52 (1) of this Act.</p>

Legislation/Policy/ Guideline	Relevant Provisions	Implications for this project
	Section 91 requires that rehabilitation measures should be included in an application for a mineral Licenses.	
Mine Health & Safety Regulations, 10th Draft	Makes provision for the health and safety of persons employed or otherwise present in mineral Licenses area. These deal with among other matters; clothing and devices; design, use, operation, supervision and control of machinery; fencing and guards; and safety measures during repairs and maintenance.	The Proponent should comply with all these regulations with respect to their employees.
Petroleum Products and Energy Act (No. 13 of 1990) Regulations (2001)	Regulation 3(2)(b) states that “No person shall possess [sic] or store any fuel except under authority of a Licenses or a certificate, excluding a person who possesses or stores such fuel in a quantity of 600 litres or less in any container kept at a place outside a local authority area”	The Proponent should obtain the necessary authorization from the MME for the storage of fuel on-site.

Legislation/Policy/ Guideline	Relevant Provisions	Implications for this project
The Regional Councils Act (No. 22 of 1992)	This Act sets out the conditions under which Regional Councils must be elected and administer each delineated region. From a land use and project planning point of view, their duties include, as described in section 28 “to undertake the planning of the development of the region for which it has been established with a view to physical, social and economic characteristics, urbanisation patterns, natural resources, economic development potential, infrastructure, land utilisation pattern and sensitivity of the natural environment.	The relevant Regional Councils are considered to be I&APs and must be consulted during the Environmental Assessment (EA) process. The project site falls under the Karas Regional Council; therefore, they should be consulted.
Local Authorities Act No. 23 of 1992	To provide for the determination, for purposes of traditional government, of traditional authority councils; the establishment of such authority councils; and to define the powers, duties and functions of traditional authority councils; and to provide for incidental matters.	The Noordoewer is the responsible local Authority of the area therefore they should be consulted.
Water Act 54 of 1956	The Water Resources Management Act 11 of 2013 is presently without regulations; therefore, the Water Act No 54 of 1956 is still in force: Prohibits the pollution of water and implements the principle that a person disposing of effluent or waste has a duty of care to prevent pollution (S3 (k)).	The protection (both quality and quantity/abstraction) of water resources should be a priority.

Legislation/Policy/ Guideline	Relevant Provisions	Implications for this project
	<p>Provides for control and protection of groundwater (S66 (1), (d (ii))).</p> <p>Liability of clean-up costs after closure/abandonment of an activity (S3 (l)). (l)).</p>	
Water Resources Management Act (No 11 of 2013)	<p>The Act provides for the management, protection, development, use and conservation of water resources; and provides for the regulation and monitoring of water services and to provide for incidental matters. The objects of this Act are to:</p> <p>Ensure that the water resources of Namibia are managed, developed, used, conserved and protected in a manner consistent with, or conducive to, the fundamental principles set out in Section 66 - protection of aquifers, Subsection 1 (d) (iii) provide for preventing the contamination of the aquifer and water pollution control (Section 68).</p>	
National Heritage Act No. 27 of 2004	<p>To provide for the protection and conservation of places and objects of heritage significance and the registration of such places and objects; to establish a National Heritage Council; to establish a National Heritage Register; and to provide for incidental matters.</p>	

Legislation/Policy/ Guideline	Relevant Provisions	Implications for this project
The National Monuments Act (No. 28 of 1969)	The Act enables the proclamation of national monuments and protects archaeological sites.	The Proponent should ensure compliance with these Acts requirements. The necessary management measures and related permitting requirements must be taken. This done by the consulting with the National Heritage Council of Namibia.
Soil Conservation Act (No 76 of 1969)	The Act makes provision for the prevention and control of soil erosion and the protection, improvement and conservation of soil, vegetation and water supply sources and resources, through directives declared by the Minister.	Duty of care must be applied to soil conservation and management measures must be included in the EMP.
Public Health Act (No. 36 of 1919)	Section 119 states that “no person shall cause a nuisance or shall suffer to exist on any land or premises owned or occupied by him or of which he is in charge any nuisance or other condition liable to be injurious or dangerous to health.”	The Proponent and all its employees should ensure compliance with the provisions of these legal instruments.
Health and Safety Regulations GN 156/1997 (GG 1617)	Details various requirements regarding health and safety of labours.	

Legislation/Policy/ Guideline	Relevant Provisions	Implications for this project
Road Traffic and Transport Act, No. 22 of 1999	The Act provides for the establishment of the Transportation Commission of Namibia; for the control of traffic on public roads, the licensing of drivers, the registration and licensing of vehicles, the control and regulation of road transport across Namibia's borders; and for matters incidental thereto. Should the Proponent wish to undertake activities involving road transportation or access onto existing roads, the relevant permits will be required.	Mitigation measures should be provided for, if the roads and traffic impact cannot be avoided, the relevant permits must be applied for.
Labour Act (No. 6 of 1992)	Ministry of Labour (MOL) is aimed at ensuring harmonious labours relations through promoting social justice, occupational health and safety and enhanced labours market services for the benefit of all Namibians. This ministry insures effective implementation of the Labour Act no. 6 of 1992.	The Proponent should ensure that the prospecting and exploration activities do not compromise the safety and welfare of workers.

4.2 International Policies, Principles, Standards, Treaties and Conventions

The international policies, principles, standards, treaties, and conventions applicable to the project are as listed in **Table 2** below.

Table 2: International Policies, Principles, Standards, Treaties and Convention applicable to the project

Statute	Provisions	Project Implications
Equator Principles	A financial industry benchmark for determining, assessing, and managing environmental and social risk in projects	These principles are an attempt to: '...encourage the

Statute	Provisions	Project Implications
	<p>(August 2013). The Equator Principles have been developed in conjunction with the International Finance Corporation (IFC), to establish an International Standard with which companies must comply with to apply for approved funding by Equator Principles Financial Institutions (EPFIs). The Principles apply to all new project financings globally across all sectors.</p> <p>Principle 1: Review and Categorization</p> <p>Principle 2: Environmental and Social Assessment</p> <p>Principle 3: Applicable Environmental and Social Standards</p> <p>Principle 4: Environmental and Social Management System and Equator Principles Action Plan</p> <p>Principle 5: Stakeholder Engagement</p> <p>Principle 6: Grievance Mechanism</p> <p>Principle 7: Independent Review</p> <p>Principle 8: Covenants</p> <p>Principle 9: Independent Monitoring and Reporting</p> <p>Principle 10: Reporting and Transparency</p>	<p>development of socially responsible projects, which subscribe to appropriately responsible environmental management practices with a minimum negative impact on project-affected ecosystems and community-based upliftment and empowering interactions.'</p>
The International Finance Corporation	The International Finance Corporation's (IFC) Sustainability Framework articulates the Corporation's strategic commitment to sustainable development and is an integral	The Performance Standards are directed towards clients, providing guidance on

Statute	Provisions	Project Implications
(IFC) Performance Standards	<p>part of IFC's approach to risk management. The Sustainability Framework comprises IFC's Policy and Performance Standards on Environmental and Social Sustainability, and IFC's Access to Information Policy. The Policy on Environmental and Social Sustainability describes IFC's commitments, roles, and responsibilities related to environmental and social sustainability.</p> <p>As of 28 October 2018, there are ten (10) Performance Standards (Performance Standards on Environmental and Social Sustainability) that the IFC requires a project Proponents to meet throughout the life of an investment. These standard requirements are briefly described below:</p> <p>Performance Standard 1: Assessment and Management of Environmental and Social Risks and Impacts.</p> <p>Performance Standard 2: Labour and Working Conditions</p> <p>Performance Standard 3: Resource Efficient and Pollution Prevention and Management.</p> <p>Performance Standard 4: Community Health and Safety.</p> <p>Performance Standard 5: Land Acquisition, Restrictions on Land Use, and Involuntary Resettlement.</p>	<p>how to identify risks and impacts, and are designed to help avoid, mitigate, and manage risks and impacts as a way of doing business in a sustainable way, including stakeholder engagement and disclosure obligations of the Client (Borrower) in relation to project-level activities. In the case of its direct investments (including project and corporate finance provided through financial intermediaries), IFC requires its clients to apply the Performance Standards to manage environmental and social risks and impacts so that development opportunities are enhanced. IFC uses the Sustainability Framework along with other strategies, policies, and initiatives to direct the business</p>

Statute	Provisions	Project Implications
	<p>Performance Standard 6: Biodiversity Conservation and Sustainable Management of Living Natural Resources</p> <p>Performance Standard 7: Indigenous Peoples/Sub-Saharan African Historically Undeserved Traditional Local Communities.</p> <p>Performance Standard 8: Cultural Heritage.</p> <p>Performance Standard 9: Financial Intermediaries (FIs).</p> <p>Performance Standard 10: Stakeholder Engagement and Information</p> <p>A full description of the IFC Standards can be obtained from</p> <p>http://www.worldbank.org/en/projects-operations/environmental-and-social-framework/brief/environmental-and-social-standards?cq_ck=1522164538151#ess1</p>	<p>activities of the Corporation to achieve its overall development objectives.</p>
<p>The United Nations Convention to Combat Desertification (UNCCD) 1992</p>	<p>Addresses land degradation in arid regions with the purpose to contribute to the conservation and sustainable use of biodiversity and the mitigation of climate change.</p> <p>The convention objective is to forge a global partnership to reverse and prevent desertification/land degradation and to mitigate the effects of drought in affected areas to support poverty reduction and</p>	<p>The project activities should not be such that they contribute to desertification.</p>

Statute	Provisions	Project Implications
	environmental sustainability United Nation Convention.	
Convention on Biological Diversity 1992	Regulate or manage biological resources important for the conservation of biological diversity whether within or outside protected areas, with a view to ensuring their conservation and sustainable use. Promote the protection of ecosystems, natural habitats, and the maintenance of viable populations of species in natural surroundings.	Removal of vegetation cover and destruction of natural habitats should be avoided and where not possible minimised.
Stockholm Declaration on the Human Environment, Stockholm (1972)	It recognizes the need for: “a common outlook and common principles to inspire and guide the people of the world in the preservation and enhancement of the human environment.	Protection of natural resources and prevention of any form of pollution.

Relevant international Treaties and Protocols ratified by the Namibian Government

- Convention on International Trade and Endangered Species of Wild Fauna and Flora (CITES), 1973.
- Convention on Biological Diversity, 1992.
- World Heritage Convention, 1972.

5. ENVIRONMENTAL BASELINE

The proposed exploration programme will be undertaken in specific environmental and social conditions. Understanding the pre-project conditions of the environment will aid in laying down background "information" of the status quo and future projections of environmental conditions after proposed works on the EPL. This also helps the EAP in identifying the sensitive environmental features that may need to be protected through the recommendations and effective implementation of mitigation measures provided.

The baseline information presented below is sourced from a variety of sources including reports of studies conducted in Karas Region. Further information was obtained by the Consultant during the site visit.

5.1 Biophysical Environment

Climate

Climate has a major influence on the exploration activities proposed on the EPL. Understanding of climatic conditions helps to determine the appropriate and/or inappropriate times to conduct exploration activities.

Noordoewer has a desert climate, during the day temperature are warm to hot, while it can be cold at night. The average annual temperature for Noordoewer is 28 degrees and there is about 38 mm of rain in a year. The project area is dry for 325 days a year with an average humidity of 34% and an EV index of 6. **Figure 3** shows the climate condition around Noordoewer.

	Jan	Feb	Mar	Apr	May	Jun	Jul	Aug	Sep	Oct	Nov	Dec
Day temp. (°C)	34	34	33	29	25	20	20	23	26	29	32	34
Night temp. (°C)	21	21	20	17	14	10	9	10	13	16	17	19
	Jan	Feb	Mar	Apr	May	Jun	Jul	Aug	Sep	Oct	Nov	Dec
Precipitation (mm)	7	11	5	2	3	1	1	1	1	2	2	2
Days with rain	4	5	4	3	1	1	1	1	1	1	1	2
Dry days	27	23	27	27	30	29	30	30	29	30	29	29
	Jan	Feb	Mar	Apr	May	Jun	Jul	Aug	Sep	Oct	Nov	Dec
Sun. hours per day	10	10	10	10	10	10	10	10	10	10	12	12
Wind force (Bft)	3	2	2	2	2	2	2	2	2	3	3	3
UV-index	7	7	7	6	5	5	5	5	6	6	7	7

Figure 3: Shows the climate condition around the project area, Noordoewer (source: <https://www.besttimetovisit.co.uk/namibia/noordoewer-4027146/>)

5.1 Topography and Landscape

The EPL 7458 is located within the Gamchab Basin which is formed by rivers eroding away from the terrains to the north of the Orange River. These River flow and erode the landscape only sporadically after heavy falls of rain. The landscape is dominated by large, open valleys of gently sloping ground covered with a sparse layer of grass, (Mendelsohn, 2003). The EPL lies at an elevation of 400 - 600 m, **figure 4** below shows the landscape and topography of the project area.

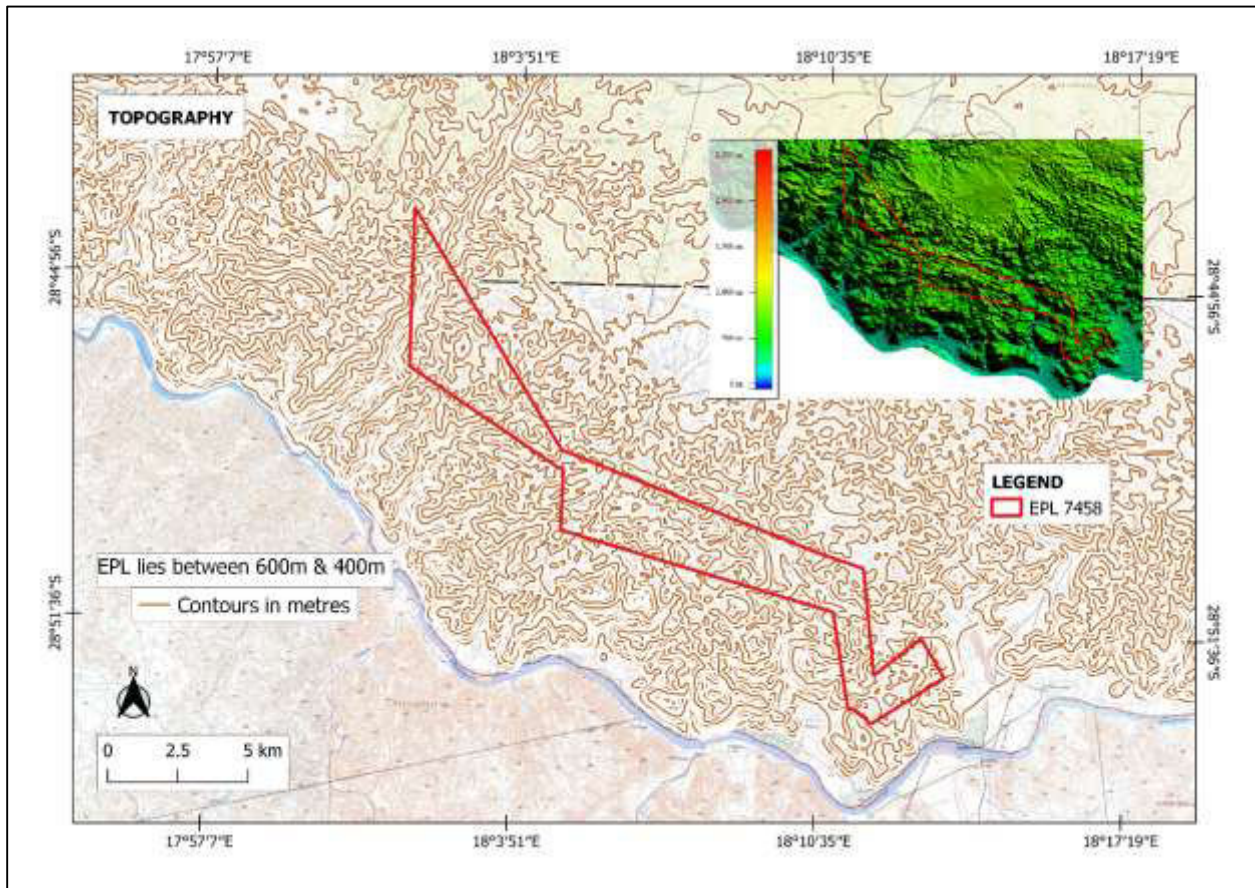


Figure 4 (a): Topography of project area

5.2 Geology and Soil

Geology

Geologically, the project area lies within an area that consists of shale of the Prince Albert Formation and the Karoo Sequence. The underlying geological formation in the project area are classified as hard rock formations (Mendelsohn, 2003) **Figure 5** below shows the geology map for the project.

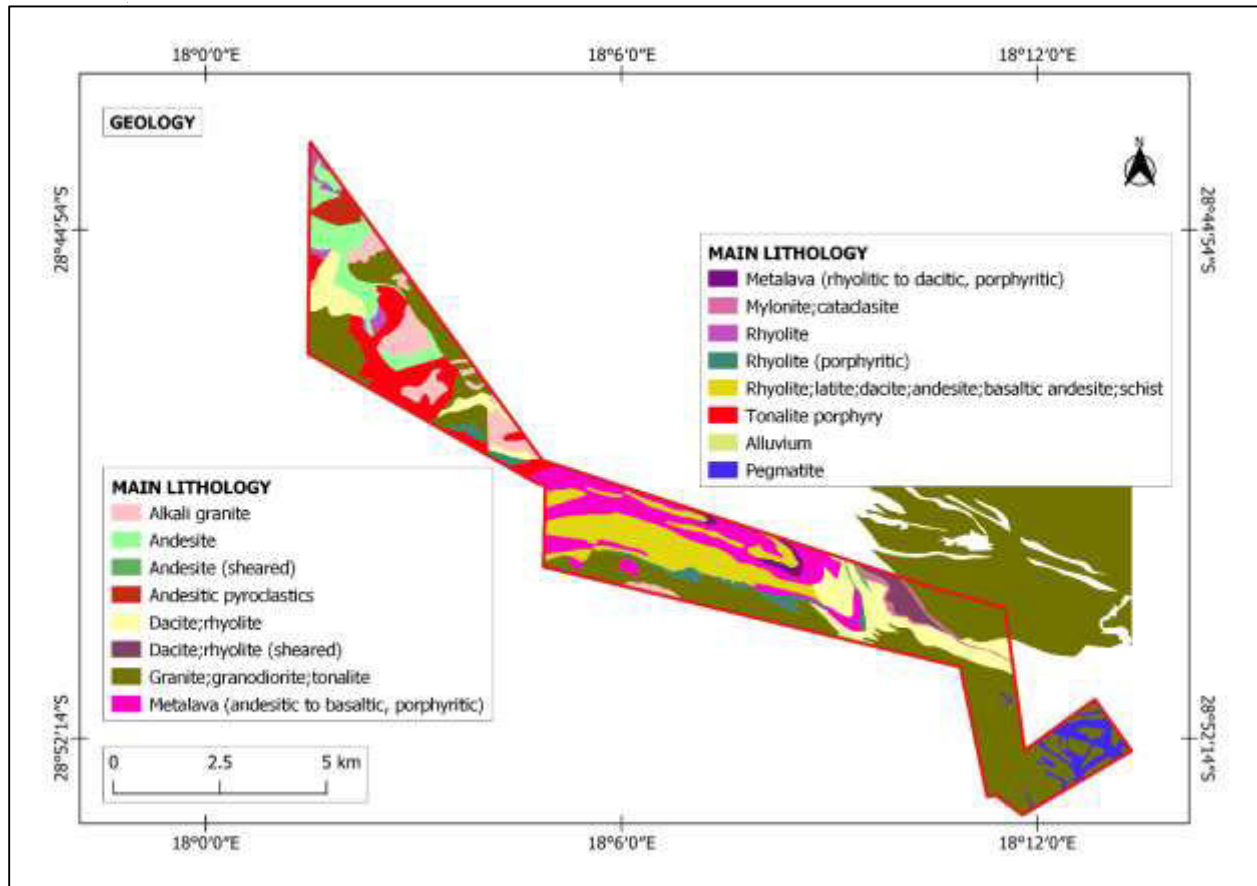


Figure 5: A map of the general geology of the project area

Soil

The EPL area is dominated by the Eutric Leptosols which are formed in an actively eroding landscape. These coarse-textured soils are characterized by their limited depth caused by the presence of a continuous layer within 80 cm of the surface, (Mendelsohn, 2003). **Figure 6** below is a map of the soil types found within the EPL area.

During prospecting phase of the project, soil sampling may be conducted. Therefore, the Soil Conservation Act (No 76 of 1969) should be taken into account to ensure that soils are conserved in way that does not promote soil erosions, which may result in creation of gullies.

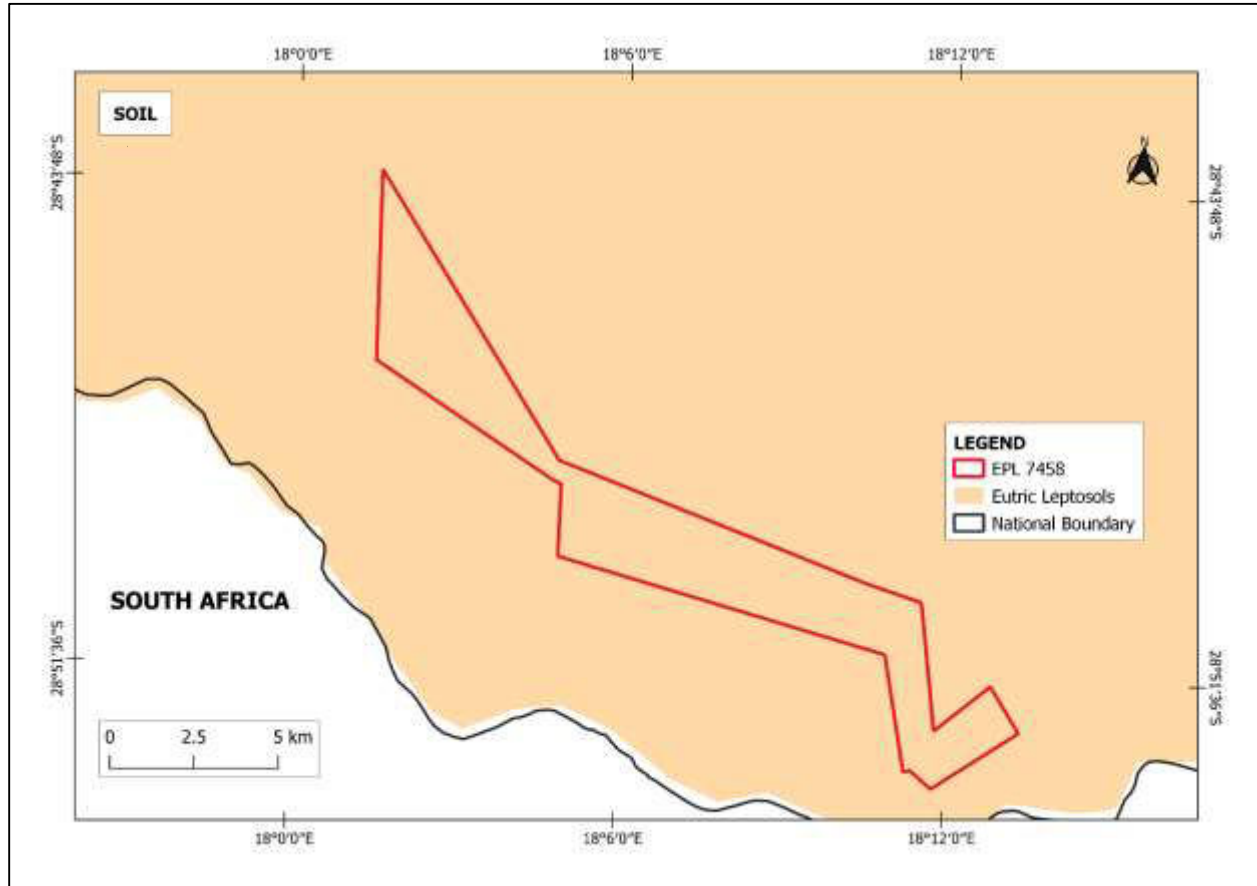


Figure 6: Shows the dominant soil types found within the EPL

5.3 Hydrology and Water Resources

The project area lies within an aquifer that consist of rock bodies that hold little groundwater potential, with a moderate groundwater vulnerability to pollutions. However, the Groundwater within the project area are most likely to flow along fractured rocks or secondary porosity within the EPL area. According to the data from Department of Water Affairs (DWA), the depth of water table in the project area is mostly like to be less than 40m below the ground level, (Ball, 2016).

Figure 7 shows the groundwater map of the project area.

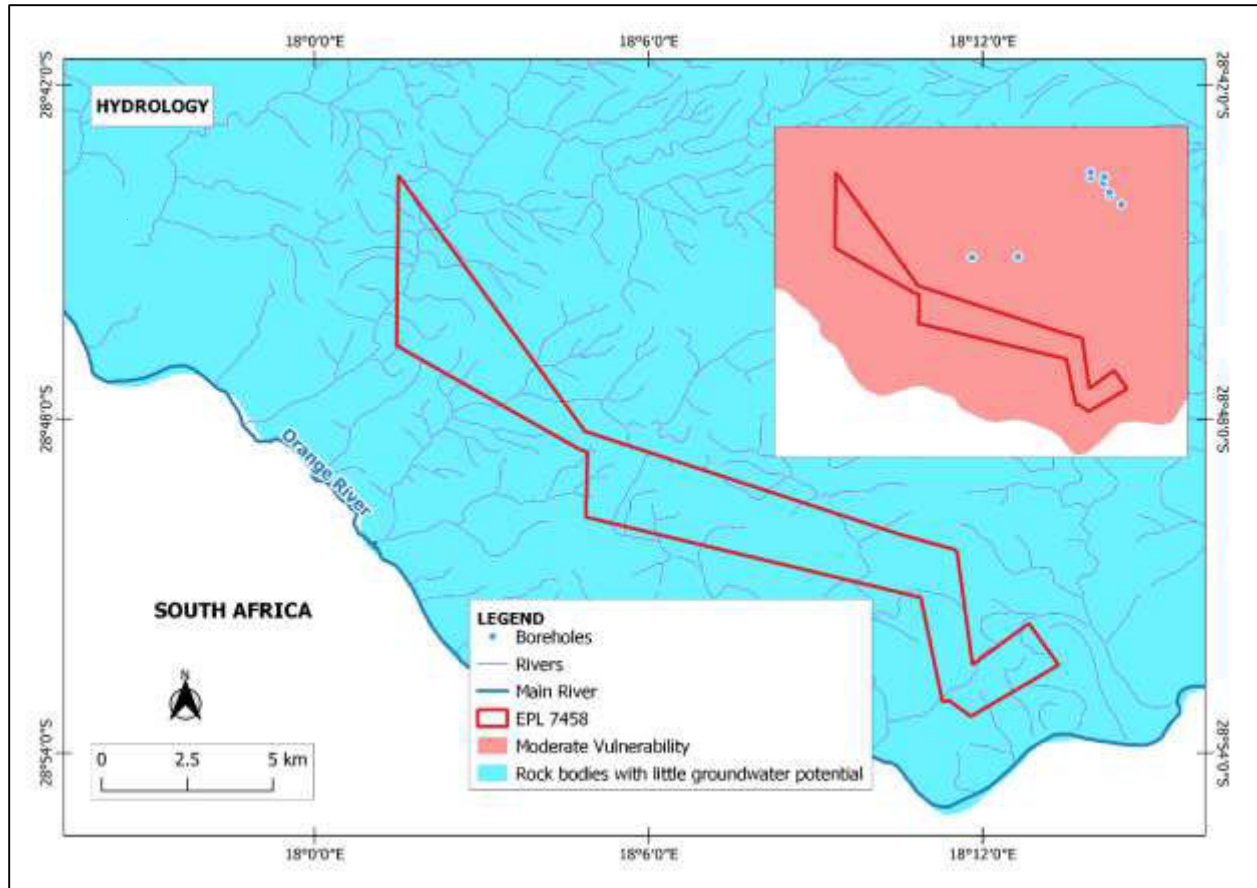


Figure 7: Shows the groundwater and surface Water System map

5.4 Flora and Fauna

Flora

The project area falls within the Nama Karoo biome, which is mainly characterized by sparse shrubland of the orange river valley (**Figure 8**), and consist of large trees (non-native). The figure below shows the structure vegetation map for the project area.

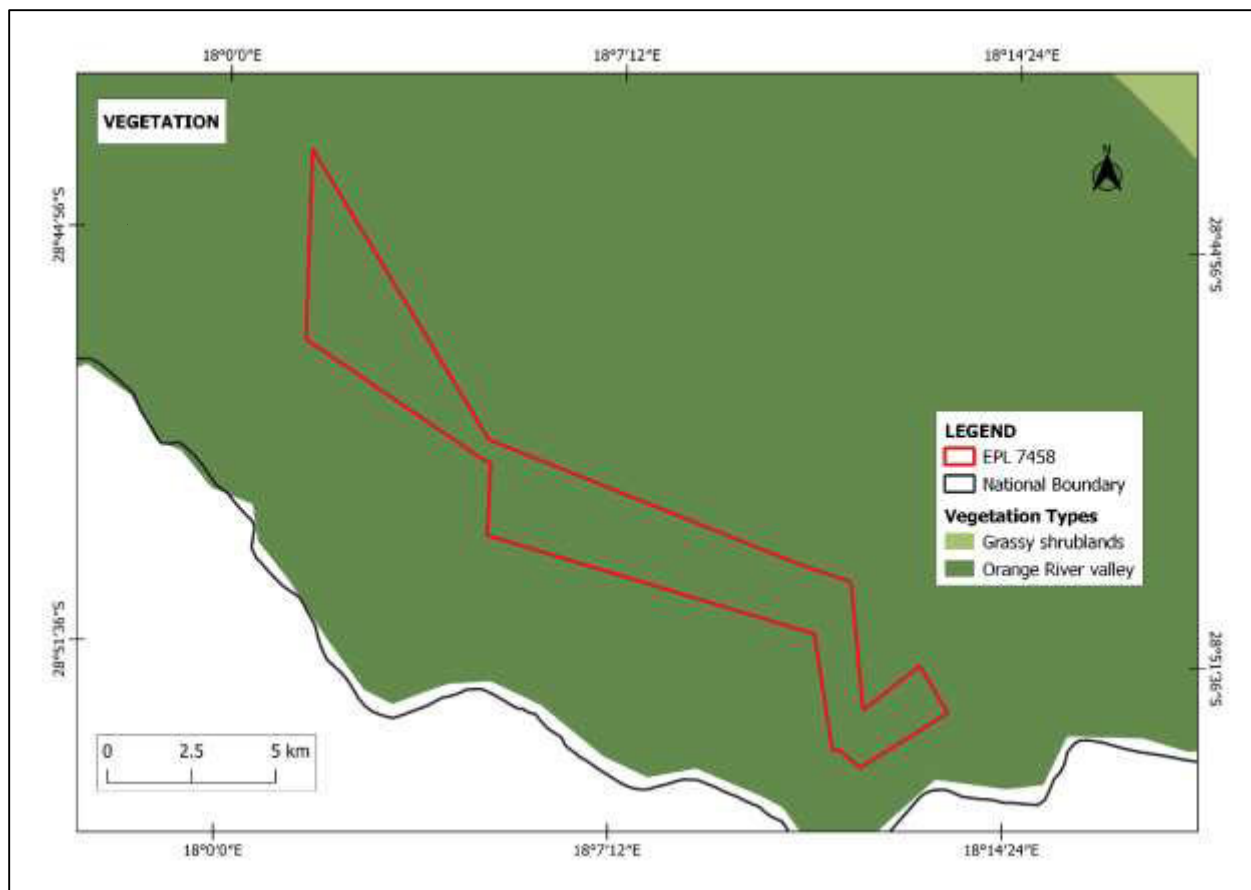


Figure 8: Shows the vegetation map for the project area

Fauna

Deducing from the Atlas of Namibia, the study area is prone to have faunal species diversity as presented below.

	<u>Diversity</u>	<u>Endemism</u>
Mammal	61 - 75 Species	7 - 8 Species
Scorpion	16 - 17 Species	1 - 2 Species
Bird	81 - 110 Species	0 Species
Reptile	61 - 70 Species	13 - 16 Species
Frog	4 - 7 Species	N/A
Lizards	> 35 Species	6 - 8 Species
Termite	1 - 6 Genera	N/A
Snakes	20 - 24 Species	5 - 6 Species

Source: Ball, 2016

5.5 Surrounding Land Uses

The EPL falls within Commercial Farm as shown in **Figure 9**. The Proponent is required to secure a signed agreement from the affected landowners to gain access to the areas of interest for prospecting and exploration investigations as per the Section 52 of the Minerals (Prospecting and Mining) Act No. 33 of 1992 and Section 2.2.3 of the Minerals Policy of Namibia.

1. *Section 52 (1) The holder of mineral licence shall not exercise any rights conferred upon such holder by this Act or under any terms and conditions of such mineral license –*

(a) In, on or under any and until such time as such holder has entered into an agreement in writing with the owner of such land containing terms and conditions relating to the payment of compensation, or the owner of such land has in writing waked any right to such compensation and has submitted a copy of such agreement or waiver to the Commissioner.

Section 2.2.3 of the Draft Minerals Policy of Namibia states that the Licence Holder and/or mineral explorers currently have to negotiate a contract with landowners to gain access for or mining purposes.

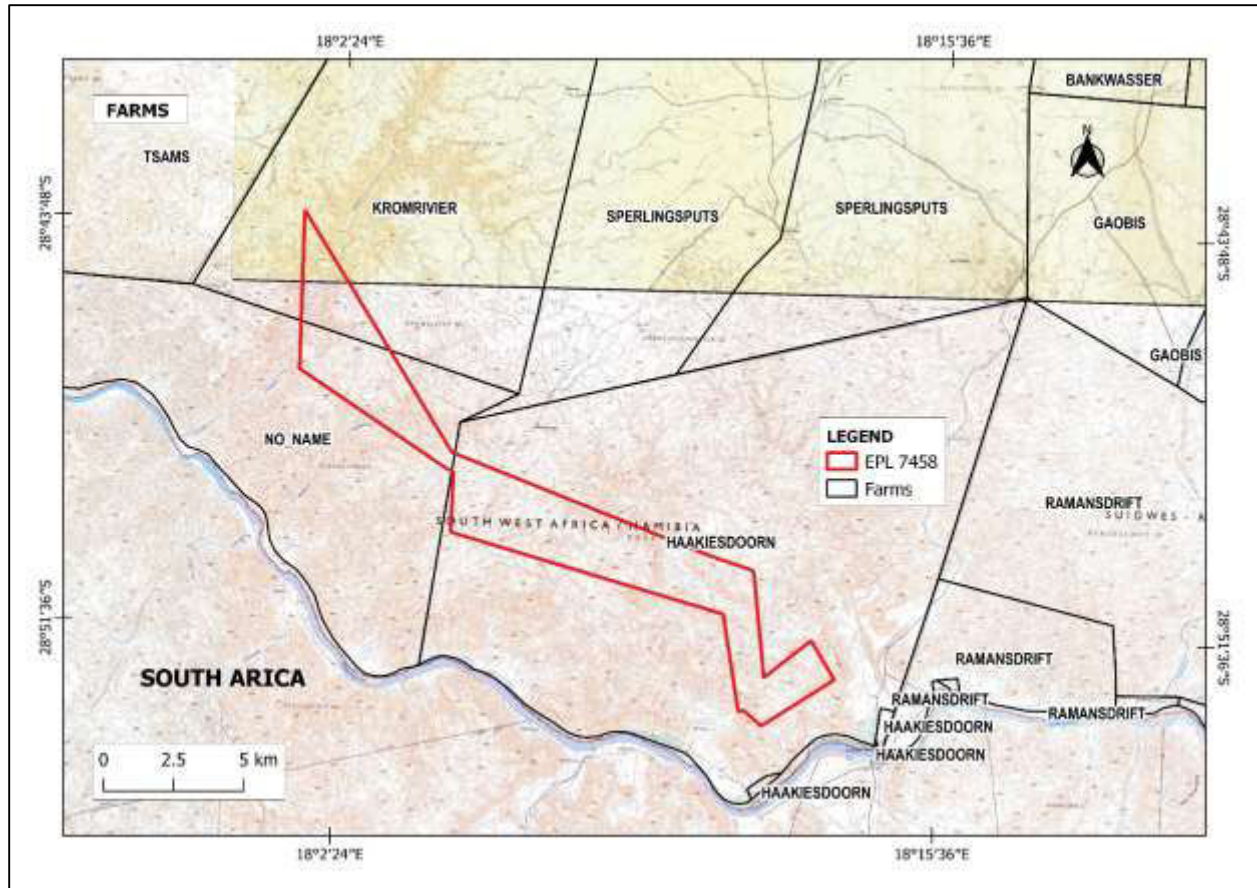


Figure 9: EPL 7458 Land Use Map

5.6 Heritage and Archaeology

Archaeology artifacts have been recorded during the site visit. It should be noted that more archaeological significant may potentially be discovered during the exploration phase. Therefore, the regulations stipulated in the National Heritage Act No. 27 of 2004 should be adhered to.

5.7 Socio-economic condition

Economic Activities

Noordoewer is the hub for agricultural activities in the southern part of //Karas Region and is linked to Namibia's road network, making it suitable for transportation between Namibia and South Africa. Agriculture, farming constitutes the main economic activities in the area, (Ball, 2016).

Tourism

Private farms and conservancies in //Karas Region offer protection to wildlife animals which attract tourists in the Region. Noordoewer is mostly a getaway to tourist attractions such as the Ai-Ais Nation Park, Hot Springs and the Fish River Canyon.

6. PUBLIC CONSULTATION PROCESS

Public consultation is an important component of an Environmental Assessment (EA) process. It provides potential Interested and Affected Parties (I&APs) with an opportunity to comment on and raise any issues related to the project, for consideration as part of the assessment process. This assists the Environmental Assessment Practitioner (EAP) in identifying all potential impacts and to the extent to which further investigations are necessary. Public consultation can also aid in the process of identifying possible mitigation measures. Public consultation for this scoping study has been done in accordance with the EMA and its EIA Regulations.

6.1 Pre-identified and Registered Interested and Affected Parties (I&APs)

Relevant and applicable national, regional, and local authorities, local leaders, and other interested members of the public were identified. Pre-identified I&APs were contacted directly, while other parties were given a chance to register after project advertisement notices in the newspapers. Newspaper advertisements were placed in two widely-read national newspapers in the region. The project advertisement/announcement ran for two consecutive weeks. The summary of pre-identified and registered I&APs is listed in **Table 3** below and the complete list of I&APs is provided in **Appendix D**.

Table 3: Summary of Interested and Affected Parties (I&APs)

National (Ministries and State-Owned Enterprises)
Ministry of Environment, Forestry and Tourism

Ministry of Mines and Energy
Ministry of Health and Social Services
Regional, Local authorities
//Karas Regional Council
Noordoewer Settlement Office
General Public
Interested members of the public

6.2 Communication with I&APs

Regulation 21 of the EIA Regulations details the steps to be taken during a public consultation process and these have been used in guiding this process. Communication with I&APs regarding the proposed development was facilitated through the following means and in this order:

- A Background Information Document (BID) containing brief information about the proposed project was compiled and emailed to identified Interested and Affected Parties (I&APs), and upon request, to all new registered I&APs.
- Project Environmental Assessment notices were published in The Namibian and New Era Newspapers 12 and 19 April 2023), inviting members of the public to register as I&APs and to submit their comments/concerns.
- The consultation meeting was scheduled and held with interested parties on 08th June 2023 at Noordoewer Settlement Office.
- The site visit assessment, observation, and comments and issues raised during the consultation meeting formed basis for the ESA Report and EMP.



Figure 10: Public Site Notice placed at Noordoewer Settlement Office



Figure 11: Public meeting held at Noordoewer Settlement Office, 08 June 2023

6.3 Feedback from Interested and Affected Parties

Issues were raised by I&APs (from the consultation meeting). The issues raised have been noted and incorporated in the ESA Report and EMP. The summary of the key issues is presented in **Table 4** below.

Table 4: Summary of main issues and comments received during the public meeting

Issues	Concerns
Small-scale miners	There are mining claims within the EPL, and their lives depends on them.
Proponent	The Proponent should be present during consultation meetings.

Objection	No exploration activities will be allowed on farms.
Consultants	Is EDS, a Namibian company?
EPL	We object this project due to the fact that the EPL has expired and it is a renewal.

7. IMPACT IDENTIFICATION, ASSESSMENT AND MITIGATION MEASURES

7.1 Impact Identification

Proposed developments/activities are usually associated with different potential positive and/or negative impacts. For an environmental assessment, the focus is placed mainly on the negative impacts. This is done to ensure that these impacts are addressed by providing adequate mitigation measures such that an impact's significance is brought under control, while maximizing the positive impacts of the development. The potential positive and negative impacts that have been identified from the prospecting activities are listed as follow:

Positive impacts:

- Creation of jobs to the locals (primary, secondary and tertiary employment).
- Producing of a trained workforce and small businesses that can service communities and may initiate related businesses
- Boosts local economic growth and regional economic development.
- Opens up other investment opportunities and infrastructure-related development benefits

Negative impacts:

- Physical land/soil disturbance,
- Impact on local biodiversity (fauna and flora) and habitat disturbance,
- Potential impact on water resources and soils particularly due to pollution,
- Air quality issues: potential dust from surface excavation, and drilling,

- Potential occupational health and safety risks associated with the movement/operation of machinery and equipment on site,
- Vehicular traffic safety and impact on services infrastructure such as local roads,
- Vibrations and noise associated with drilling activities may be a nuisance to locals,
- Environmental pollution (waste generation)
- Potential social nuisance and conflicts between land owners/users and the Proponent.

7.2 Impact Assessment Methodology

The Environmental Assessment process primarily ensures that potential impacts that may occur from project activity are identified and addressed with environmentally cautious approaches and legal compliance. The impact assessment method used for this project is in accordance with Namibia's Environmental Management Act (No. 7 of 2007) and its Regulations of 2012, as well as the International Finance Corporation (IFC) Performance Standards.

The identified impacts are assessed in terms of scale/extent (spatial scale), duration (temporal scale), magnitude (severity) and probability (likelihood of occurring), as presented in **Table 5**, **Table 6**, **Table 7** and **Table 8**, respectively.

In order to enable a scientific approach to the determination of the environmental significance, a numerical value is linked to each rating scale. This methodology ensures uniformity and that potential impacts can be addressed in a standard manner so that a wide range of impacts are comparable. It is assumed that an assessment of the significance of a potential impact is a good indicator of the risk associated with such an impact. The following process will be applied to each potential impact:

- Provision of a brief explanation of the impact;
- Assessment of the pre-mitigation significance of the impact; and
- Description of recommended mitigation measures.

The recommended mitigation measures prescribed for each of the potential impacts contribute towards the attainment of environmentally sustainable operational conditions of the project for various features of the biophysical and social environment. The following criteria were applied in this impact assessment:

7.2.1 Extent (spatial scale)

Extent is an indication of the physical and spatial scale of the impact. **Table 5** shows rating of impact in terms of extent of spatial scale.

Table 5: Extent or spatial impact rating

Low (1)	Low/Medium (2)	Medium (3)	Medium/High (4)	High (5)
Impact is localized within the site boundary: Site only	Impact is beyond the site boundary: Local	Impacts felt within adjacent biophysical and social environments: Regional	Impact widespread far beyond site boundary: Regional	Impact extend National or over international boundaries

7.2.2 Duration

Duration refers to the timeframe over which the impact is expected to occur, measured in relation to the lifetime of the project. **Table 6** shows the rating of impact in terms of duration.

Table 6: Duration impact rating

Low (1)	Low/Medium (2)	Medium (3)	Medium/High (4)	High (5)
Immediate mitigating measures, immediate progress	Impact is quickly reversible, short term impacts (0-5 years)	Reversible over time; medium term (5-15 years)	Impact is long-term	Long term; beyond closure; permanent; irreplaceable or irretrievable commitment of resources

7.2.3 Intensity, Magnitude / severity

Intensity refers to the degree or magnitude to which the impact alters the functioning of an element of the environment. The magnitude of alteration can either be positive or negative. These ratings

were also taken into consideration during the assessment of severity. **Table 7** shows the rating of impact in terms of intensity, magnitude or severity.

Table 7: Intensity, magnitude or severity impact rating

Type of criteria	Negative				
	H- (10)	M/H- (8)	M- (6)	M/L- (4)	L- (2)
Qualitative	Very high deterioration, high quantity of deaths, injury of illness / total loss of habitat, total alteration of ecological processes, extinction of rare species	Substantial deterioration, death, illness or injury, loss of habitat / diversity or resource, severe alteration or disturbance of important processes	Moderate deterioration, discomfort, partial loss of habitat / biodiversity or resource, moderate alteration	Low deterioration, slight noticeable alteration in habitat and biodiversity. Little loss in species numbers	Minor deterioration, nuisance or irritation, minor change in species / habitat / diversity or resource, no or very little quality deterioration.

7.2.4 Probability of occurrence

Probability describes the likelihood of the impacts actually occurring. This determination is based on previous experience with similar projects and/or based on professional judgment. **Table 8** shows impact rating in terms of probability of occurrence.

Table 8: Probability of occurrence impact rating

Low (1)	Medium/Low (2)	Medium (3)	Medium/High (4)	High (5)
Improbable; low likelihood; seldom. No known risk or vulnerability to natural or induced hazards.	Likely to occur from time to time. Low risk or vulnerability to natural or induced hazards	Possible, distinct possibility, frequent. Low to medium risk or vulnerability to natural or induced hazards.	Probable if mitigating measures are not implemented. Medium risk of vulnerability to natural or induced hazards.	Definite (regardless of preventative measures), highly likely, continuous. High risk or vulnerability to natural or induced hazards.

7.2.5 Significance

Impact significance is determined through a synthesis of the above impact characteristics. The significance of the impact “without mitigation” is the main determinant of the nature and degree of mitigation required. As stated in the introduction to this section, for this assessment, the significance of the impact without prescribed mitigation actions is measured.

Once the above factors (**Table 5, Table 6, Table 7** and **Table 8**) have been ranked for each potential impact, the impact significance of each is assessed using the following formula:

$$\text{SIGNIFICANCE POINTS (SP)} = (\text{MAGNITUDE} + \text{DURATION} + \text{SCALE}) \times \text{PROBABILITY}$$

The maximum value per potential impact is 100 significance points (SP). Potential impacts were rated as high, moderate or low significance, based on the following significance rating scale (**Table 9**).

Table 9: Significance rating scale

Significance	Environmental Significance Points	Colour Code
High (positive)	>60	H
Medium (positive)	30 to 60	M
Low (positive)	1 to 30	L

Significance	Environmental Significance Points	Colour Code
Neutral	0	N
Low (negative)	-1 to -30	L
Medium (negative)	-30 to -60	M
High (negative)	<-60	H

Positive (+): Beneficial impact

Negative (-): Deleterious/ adverse + Impact

Neutral: Impacts are neither beneficial nor adverse

For an impact with a significance rating of high (-ve), mitigation measures are recommended to reduce the impact to a medium (-ve) or low (-ve) significance rating, provided that the impact with a medium significance rating can be sufficiently controlled with the recommended mitigation measures. To maintain a low or medium significance rating, monitoring is recommended for a period of time to enable the confirmation of the significance of the impact as low or medium and under control.

The assessment of the exploration phases is done for pre-mitigation and post-mitigation.

The risk/impact assessment is driven by three factors:

Source: The cause or source of the contamination.

Pathway: The route taken by the source to reach a given receptor

Receptor: A person, animal, plant, eco-system, property or a controlled water source. If contamination is to cause harm or impact, it must reach a receptor.

A pollutant linkage occurs when a source, pathway and receptor exist together. Mitigation measures aim firstly, avoid risk and if the risk cannot be avoided, mitigation measures to minimize the impact are recommended. Once mitigation measures have been applied, the identified risk would reduce to lower significance (Booth, 2011).

This assessment focuses on the three project phases namely; prospecting, exploration (and possible analysis) and decommissioning. The potential negative impacts stemming from the

proposed activities of the EPL are described, assessed and mitigation measures provided thereof. Further mitigation measures in a form of management action plans are provided in the Draft Environmental Management Plan.

7.3 Assessment of Potential Negative Impacts

The main potential negative impacts associated with the operation and maintenance phase are identified and assessed below:

7.3.1 Land Degradation and Loss of Biodiversity

Fauna: The drilling activities of the exploration project would lead to habitat loss for a diversity of flora and fauna ranging from microorganisms to large animals and trees. Endemic species are most severely affected since even the slightest disruption in their habitat can result in extinction or put them at high risk of being wiped out.

The presence and movement of the exploration workforce and operation of project equipment and heavy vehicles would cause some disturbance on the explored areas.

Un-rehabilitated and/or unfenced boreholes, trenches and exploration pits used for exploration (once they are no longer in use) may have long term impacts on faunal habitats in the area causing injuries and potentially mortalities.

Flora: Direct impacts on flora mainly occur through clearing for the exploration access routes and associated infrastructure, and if there is a need for new road construction, the Proponent should apply for this permit and must consult the affected parties.

Dust emissions from drilling may affect surrounding vegetation through the fall of dust. Some loss of vegetation is an inevitable consequence on the development.

Under the status, the impact can be of a medium significance rating. With the implementation of appropriate mitigation measures, the rating will be reduced to a low significance rating. The impact is assessed in **Table 10** below.

Table 10: Assessment of the impacts of exploration on biodiversity

Mitigation Status	Extent	Duration	Intensity	Probability	Significance
Pre mitigation	M: -4	M: -4	M: -6	M/H: -4	M: -56

Post mitigation	L/M: -3	L/M: -3	L/M: -4	L/M: -2	L: -20
------------------------	---------	---------	---------	---------	---------------

7.3.2 Generation of Dust (Air Quality)

Dust emanating from site access roads when transporting exploration equipment and supply (water) to and from site (time-to-time) may compromise the air quality in the area. Vehicular movements from heavy vehicles such as trucks could potentially create dust, even though not so severely. The hot and dry environment, hard and sandy nature of the substrate and low vegetation cover causes ambient fugitive dust levels. Additionally, activities carried out as part of the exploration works such as drilling would contribute to the dust levels in the air. The medium significance of this impact can be reduced to a low significance rating by properly implementing mitigation measures. The impact is assessed in **Table 11** below.

Table 11: Assessment of the impacts of exploration on air quality

Mitigation Status	Extent	Duration	Intensity	Probability	Significance
Pre mitigation	M: -4	M: -3	M/L: -3	M/H: 4	M: -40
Post mitigation	L: -2	L: -2	L: -2	L: -1	L: -6

7.3.3 Water Usage

Water resources may be impacted by project developments/activities through pollution (water quality). The impact of the project activities on the resources would be dependent on the water volumes required for each project activity. Commonly exploration activities use a lot of water, mainly for drilling. However, this depends on the target mineral, and the type of drilling methods employed (diamond drilling is more water-consuming compared to reverse circulation drilling).

Reverse Circulation drilling method will be employed for the project drilling activities, and it requires about 3,000 litres/month. Given the low groundwater potential of the project site area, the Proponent might need to cart in water volumes from outside the area and store it in industry standard water reservoirs/tanks on site. The exploration period is temporally limited, therefore, the impact will only last for the duration of the exploration activities and cease upon completion of works.

Without the implementation of any mitigation measures, the impact can be rated as medium, but upon effective implementation of the recommended measures, the impact significance would be reduced to low as presented in **Table 12** below.

Table 12: Assessment of the project impact on water resource use and availability

Mitigation Status	Extent	Duration	Intensity	Probability	Significance
Pre mitigation	M: -3	M/H: -3	L/M: -3	M/H: -4	M: -36
Post mitigation	L/M: -2	L/M: -2	L: -2	L/M: -2	L: -12

7.3.4 Soil and Water Resources Pollution

The proposed exploration activities are associated with a variety of potential pollution sources (i.e., lubricants, fuel, and wastewater), which may contaminate/pollute soils and eventually surface and groundwater, since the EPL is vulnerable to pollution. The anticipated potential source of pollution to water resources from the project activities would be hydrocarbons (oil) from project vehicles, machinery, and equipment as well as potential wastewater/effluent from exploration related activities.

The spills (depending on volume) from these machinery, vehicles and equipment could infiltrate into the ground and pollute the fractured or faulted aquifers on site, and with time, reach further groundwater systems. However, it must be noted that the scale and extent/footprint of the activities where potential sources of pollution will be handled is relatively small. Therefore, the impact is moderately low.

Pre-mitigation measure implementation, the impact significance is moderate and upon implementation, the significance will be reduced to low. The impact is assessed in **Table 13** below.

Table 13: Assessment of the project impact on soils and water resources (pollution)

Mitigation Status	Extent	Duration	Intensity	Probability	Significance
Pre mitigation	M: -3	M/H: -3	M: -5	M: -3	M: -33
Post mitigation	L: -1	L: -1	L: -2	L/M: -2	L: -8

7.3.5 Waste Generation

During the prospecting and exploration phase, domestic and general waste is produced on site. If the generated waste is not disposed of in a responsible way, land pollution may occur on the EPL or around the site. Improper handling, storage and disposal of hydrocarbon products and hazardous materials at the site may lead to soil and groundwater contamination, in case of spills and leakages. Any hazardous waste that may have an impact on the animals, vegetation, water resources and the general environment should be handled cautiously. Without any mitigation measures, the general impact of waste generation has a medium significance. The impact rating will decrease to low significance, upon implementing the mitigation measures. The assessment of this impact is given in **Table 14**.

Table 14: Assessment of waste generation impact

Mitigation Status	Extent	Duration	Intensity	Probability	Significance
Pre mitigation	L/M: -3	L/M: -2	M: -6	M: -3	M: -33
Post mitigation	L: -1	L: -2	L: -2	L/M: -2	L: -10

7.3.6 Occupational Health and Safety Risks

Project personnel (workers) involved in the exploration activities may be exposed to health and safety risks associated with the exploration activities. This also refers to accidental injury, owing to either minor (i.e., superficial physical injury) or major (i.e., involving heavy machinery or vehicles) accidents. The site safety of all personnel will be the Proponent's responsibility and should be adhered to as per the requirements of the Labour Act (No. 11 of 2007) and the Public Health Act (No. 36 of 1919). The heavy vehicle, equipment and fuel storage area should be properly secured to prevent any harm or injury to the Proponent's personnel or local domestic animals.

The use of heavy equipment, especially during drilling and the presence of hydrocarbons on sites may result in accidental fire outbreaks. This could pose a safety risk to the project personnel and

equipment. If machinery and equipment are not properly stored, the safety risk may be a concern for project workers.

The impact is probable and has a medium significance rating. However, with adequate mitigation measures, the impact rating will be reduced to low. This impact is assessed in **Table 15** below and mitigation measures provided.

Table 15: Assessment of the impacts of exploration on health and safety

Mitigation Status	Extent	Duration	Intensity	Probability	Significance
Pre mitigation	M: -3	M: -3	M: -6	M/H: -4	M: -48
Post mitigation	L/M: -2	L/M: -2	L: -2	L/M: -2	L: -12

7.3.7 Vehicular Traffic Use and Safety

The district roads are the main transportation routes for all vehicular movement in the area and provide access to the EPL and connect the project area to other towns such Karasburg. Therefore, traffic volume will increase on these district roads during exploration as the project would need a delivery of supplies and services on site. These service and supplies will include but are not limited to water, waste removal, procurement of exploration machinery, equipment, and others.

Depending on the project needs, trucks, and medium and small vehicles will be frequenting the area to and from exploration sites on the EPL. This would potentially increase slow moving heavy vehicular traffic along these roads. The impact would be felt by the local road users such as those accessing Aussenkehr (via local access gravel and single-track roads). This would add additional pressure on the roads.

However, the exploration related heavy trucks will only be transporting materials and equipment to and from site, limited number of times a month during exploration. Therefore, the risk is anticipated to be short-term, not frequent, and therefore of medium significance. Pre-mitigation, the impact can be rated medium and with the implementation of mitigation measures, the significance will be low as assessed in **Table 16** below.

Table 16: Assessment of the impacts of exploration on road use (vehicular traffic)

Mitigation Status	Extent	Duration	Intensity	Probability	Significance
Pre mitigation	M: -4	M/H: -4	L/M: -6	M/H: -4	M: -56
Post mitigation	L/M: -2	L/M: -2	L: -2	L/M: -2	L: -12

7.3.8 Noise and vibrations

Prospecting and exploration work (especially drilling) may be a nuisance to surrounding communities due to the noise produced by the activity. Excessive noise and vibrations can be a health risk to workers on site. The exploration equipment used for drilling on site is of medium size and the noise level is bound to be limited to the site only, therefore, the impact likelihood is minimal. Without any mitigation, the impact is rated as of medium significance. To change the impact significance from the pre-mitigation significance to low rating, the mitigation measures should be implemented. This impact is assessed in **Table 17** below.

Table 17: Assessment of the impacts of noise and vibrations from exploration

Mitigation Status	Extent	Duration	Intensity	Probability	Significance
Pre mitigation	L/M: -3	L/M: -3	M: -6	M/H: -3	M: -36
Post mitigation	L: -2	L/M: -2	L: -2	L/M: -2	L: -12

7.3.9 Disturbance to Archaeological and Heritage Resources

The specialist archaeological assessment conducted, indicates that Karas Region is sensitive and contains archeological/cultural significant sites, and there is a possibility of unveiling/discovering new archeological and/or cultural materials in the proposed project area. If such Materials are found the areas must be mapped out and coordinates taken to establish “No-Go-Areas”, due to their sensitivity and then documented. They may be protected either by fencing them off or demarcation for preservation purposes, or excluding them from any development i.e., no exploration activities should be conducted near these recorded areas through the establishment of buffer zones.

This impact can be rated as medium significance if there are no mitigation measures in place. Upon implementation of the necessary measures, the impact significance will be reduced to a lower rating. The impact is assessed in **Table 18**.

Table 18: Assessment of the impacts of exploration on archaeological & heritage resources

Mitigation Status	Extent	Duration	Intensity	Probability	Significance
Pre mitigation	M - 3	M/H - 4	M - 6	M/H - 4	M – 52
Post mitigation	L/M - 2	L/M - 2	L - 2	L/M - 2	L - 12

7.3.10 Social Nuisance: Local Property intrusion and Disturbance or Damage

The presence of project personnel in the area may lead to social annoyance to the local community. This could particularly be a concern if some workers enter or damage local private or public property. The private property could be houses, fences, vegetation, or any properties of economic or cultural value to the local land owners/users. The unpermitted and unauthorized entry to private property may cause crashes between the affected property (land) owners and the Proponent.

Pre-implementation of mitigation measures, the impact is rated as of medium significance. However, upon mitigation (post-mitigation), the significance will change from medium to low rating. The impact is assessed below (**Table 19**).

Table 19: Assessment of social impact of community property damage or disturbance

Mitigation Status	Extent	Duration	Intensity	Probability	Significance
Pre mitigation	M: -3	M: -3	M: -6	M/H: -4	M: -48
Post mitigation	L: -2	L: -2	M/L: -4	M/L: -2	L: -16

7.4 Cumulative Impacts Associated with Proposed Exploration

According to the International Finance Corporation (2013), cumulative impacts are defined as “those that result from the successive, incremental, and/or combined effects of an action, project, or activity (collectively referred to in this document as “developments”) when added to other existing, planned, and/or reasonably anticipated future ones”.

Similar to many other exploration projects, cumulative impacts to which the proposed project and associated activities potentially contribute are:

- **Impact on road infrastructure:** The proposed exploration activity contributes cumulatively to various activities such as existing prospecting and mining activities and travelling associated with tourism and local daily routines. The contribution of the proposed project to this impact is however not considered significant given the short duration, and local extent (site-specific) of the intended mineral exploration activities.
- **The use of water:** While the contribution of this project will not be significant, mitigation measures to reduce water consumption during exploration are essential.

7.5 Mitigations and Recommendations for Rehabilitation

The rehabilitation of explored (disturbed) sites will include but not be limited to the following:

- Backfilling of trenches and/or pits in such a way that subsoil is replaced first, and topsoil is replaced last.
- Levelling of stockpiled topsoil. This will be done to ensure that the disturbed sites are left as close to their original state as much as possible.
- Closing off and capping of all exploration drilling boreholes to ensure that they do not pose a risk to people and animals in the area. The boreholes should not only be filled with sand alone, as wind will scour the sand and re-establish the holes.
- Removal of exploration equipment and vehicles from the site. Transporting all machinery and equipment as well as vehicles to designated offsite storage facilities.
- Clean up of site work areas and transporting the recently generated waste to the nearby approved waste management facility (as per agreement with the facility operator/owner).

8. CONCLUSIONS AND RECOMMENDATIONS

8.1 Conclusions

It is crucial for the Proponent and their contractors to effectively implement the recommended management and mitigation measures, in order to protect both the biophysical and social environment throughout the project duration. All these would be done with the aim of promoting environmental sustainability while ensuring a smooth and harmonious existence of the project

activities in the host community and environment at large. This is to ensure that all potential impacts identified in this study and other impacts that might arise during implementation, are properly identified in time and addressed. Lastly, may the ECC be issued, the Proponent will be expected to be compliant with the ECC conditions as well as legal requirements governing mineral exploration and related activities.

8.2 Recommendations

The potential positive and negative impacts of the proposed exploration activities on EPL No. 7458 were identified, assessed and appropriate management and mitigation measures (to negative impacts) made thereof, for implementation by the Proponent, their contractors and all project employees.

Most of the potential impacts were found to be of medium rating significance. With the effective implementation of the recommended management and mitigation measures, this will particularly see the reduction in the significance of adverse impacts that cannot be avoided completely (from medium rating to low). To maintain the desirable rating, the implementation of management and mitigation measures should be monitored by the Proponent directly, or by a project Environmental Health Control Officer (ECO). The monitoring of this implementation will be carried out to maintain a low significance rating, and also ensure that all potential impacts identified in this study and other impacts that might arise during implementation are properly identified in time and addressed right away.

The Environmental Consultant is confident that the potential negative impacts associated with the proposed project activities can be managed and mitigated by the effective implementation of the recommended management and mitigation measures, and with more effort and commitment directed towards monitoring the implementation of these measures.

It is therefore, recommended that in the event of ECC issuance, the proposed prospecting and exploration activities may be granted an Environmental Clearance Certificate, provided that:

- All the management and mitigation measures provided herein are effectively and progressively implemented.
- All required permits, Licenses and approvals for the proposed activities should be obtained as required. These include permits and Licenses for land use access agreements to explore and ensuring compliance with these specific legal requirements.

- The Proponent and all their project workers or contractors comply with the legal requirements governing their project and its associated activities and ensure that project permits and or approvals required to undertake specific site activities are obtained and renewed as stipulated by the issuing authorities.
- Sites where exploration activity has ceased are rehabilitated, as far as practicable, to their pre-exploration state.

9. REFERENCES

Booth, P. (2011). Environmental Conceptual Site Model Exercise: Source – pathway – receptor. WSP Global: Semantic Scholar.

Ball, J. (2016). Proposed expansion of the Aussenkehr Substation: Environmental Impact Assessment process- Scoping report

Geological Survey of Namibia (2015). Strategic Environmental Management Plan (SEMP) for the Central Namib Uranium Mining Province, 2013 Annual Report. Ministry of Mines and Energy, Windhoek, Republic of Namibia

Mendelsohn, J. (2003). Atlas of Namibia: A Portrait of the Land and its People. Windhoek: The Ministry of Environment and Tourism of Namibia.

NSA. (2011). Retrieved from <https://digitalnamibia.nsa.org.na/>

NSA. (2011). Digital Namibia: Namibia statistics of Namibia. Retrieved February 17, 2022, from <https://digitalnamibia.nsa.org.na/>