

Figure 4: Illustration of the two Rail / Truck transportation routes proposed by TradePort Namibia

2.1. SITE SELECTION

The proposed route through town and to the port area is surrounded by mixed land-use. The route follows the existing railway and is intended to eliminate any potential implications on traffic within the two towns as it's transported to the warehouses. Along the way, the route passes initially through some residential areas to the right and some partially dormant semi-industrial on the left of the railway, and mixed use Walvis Bay CBD consisting of various institutions, residential properties, tourist accommodation, restaurants and various business.

On a site specific level, two site (one each) at the Walvis Bay (**Figure 5**) Port and in Gobabis / Witvlei (**Figure 6**) were selected, on which the warehouse facilities will be constructed (corner GPS coordinates presented in **Table 3**). The site selection process took into consideration key site selection factors such as land availability, proximity to sensitive receptors, site accessibility, topography, risks, current land use.

Table 3: Corner coordinates of the proposed development site

| Corner point | Latitude | Longitude |
|-----------------------|-------------|------------|
| A – Gobabis / Witvlei | -22.447319° | 18.971593° |
| B – Gobabis / Witvlei | -22.447338° | 18.971081° |
| C – Gobabis / Witvlei | -22.448181° | 18.971226° |
| D – Gobabis / Witvlei | -22.448178° | 18.971687° |
| E – Walvis Bay | -22.959265° | 14.489111° |
| F – Walvis Bay | -22.959899° | 14.489853° |
| G – Walvis Bay | -22.958643° | 14.491517° |
| H – Walvis Bay | -22.958464° | 14.490142° |

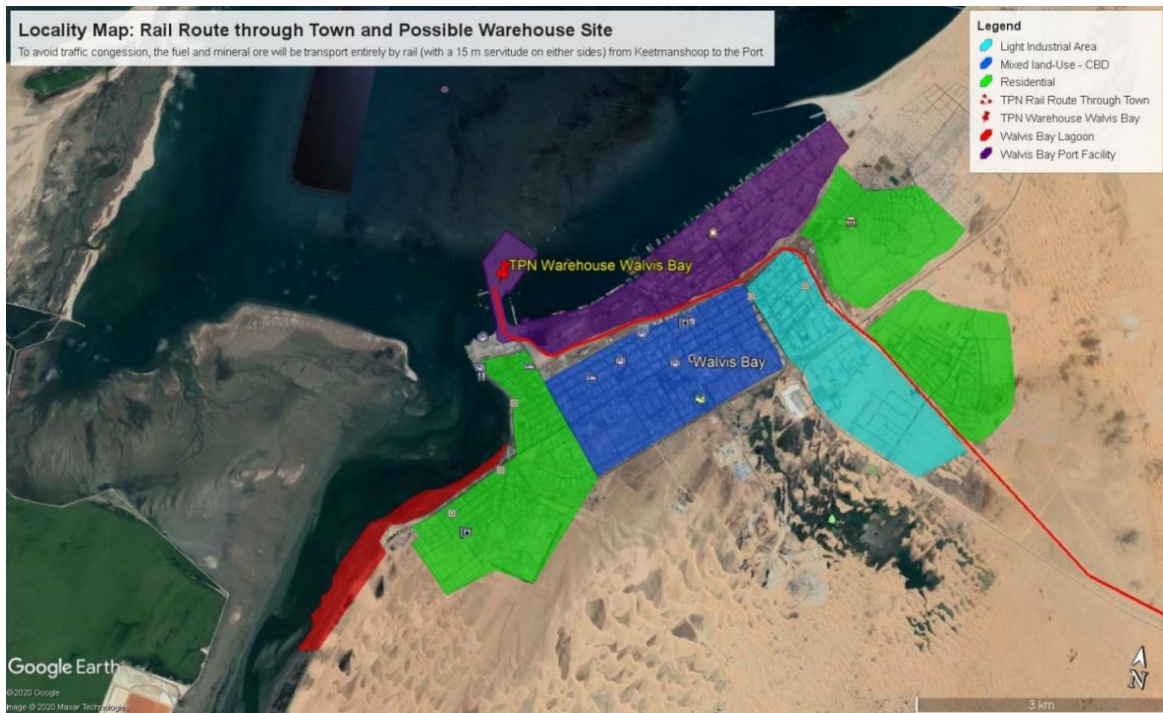


Figure 5: Haulage route along the existing railway line through different land uses in the Walvis Bay town

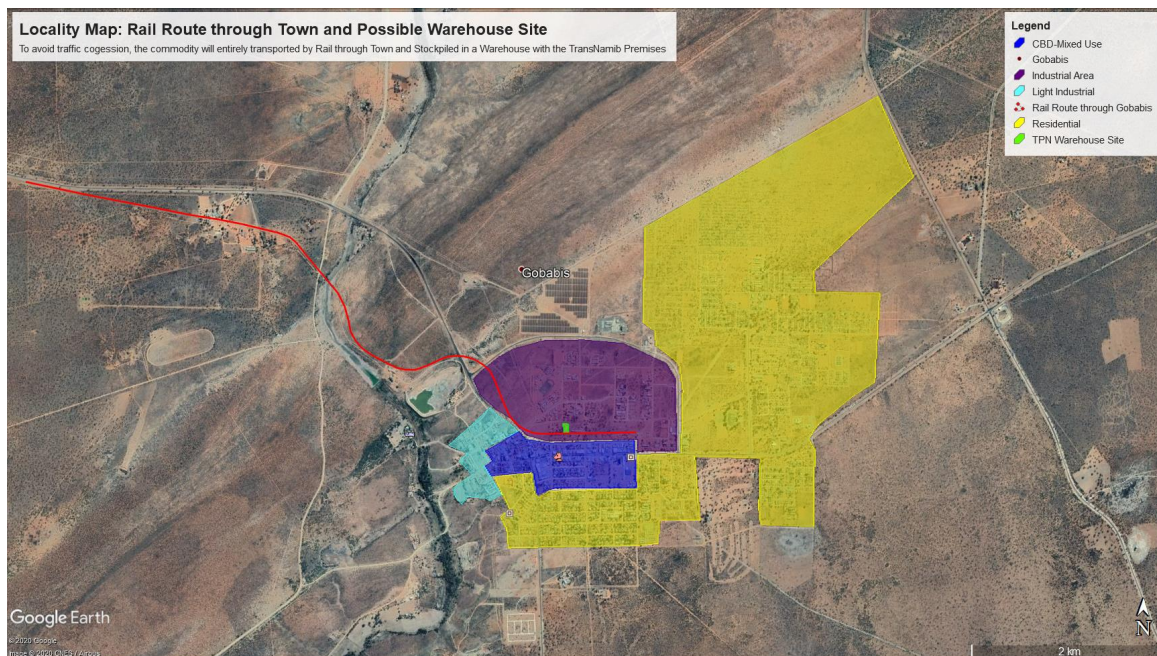


Figure 6: Haulage route along the existing railway line through different land uses in the Gobabis / Witvlei town