

Approved

SG No.A 406/2018

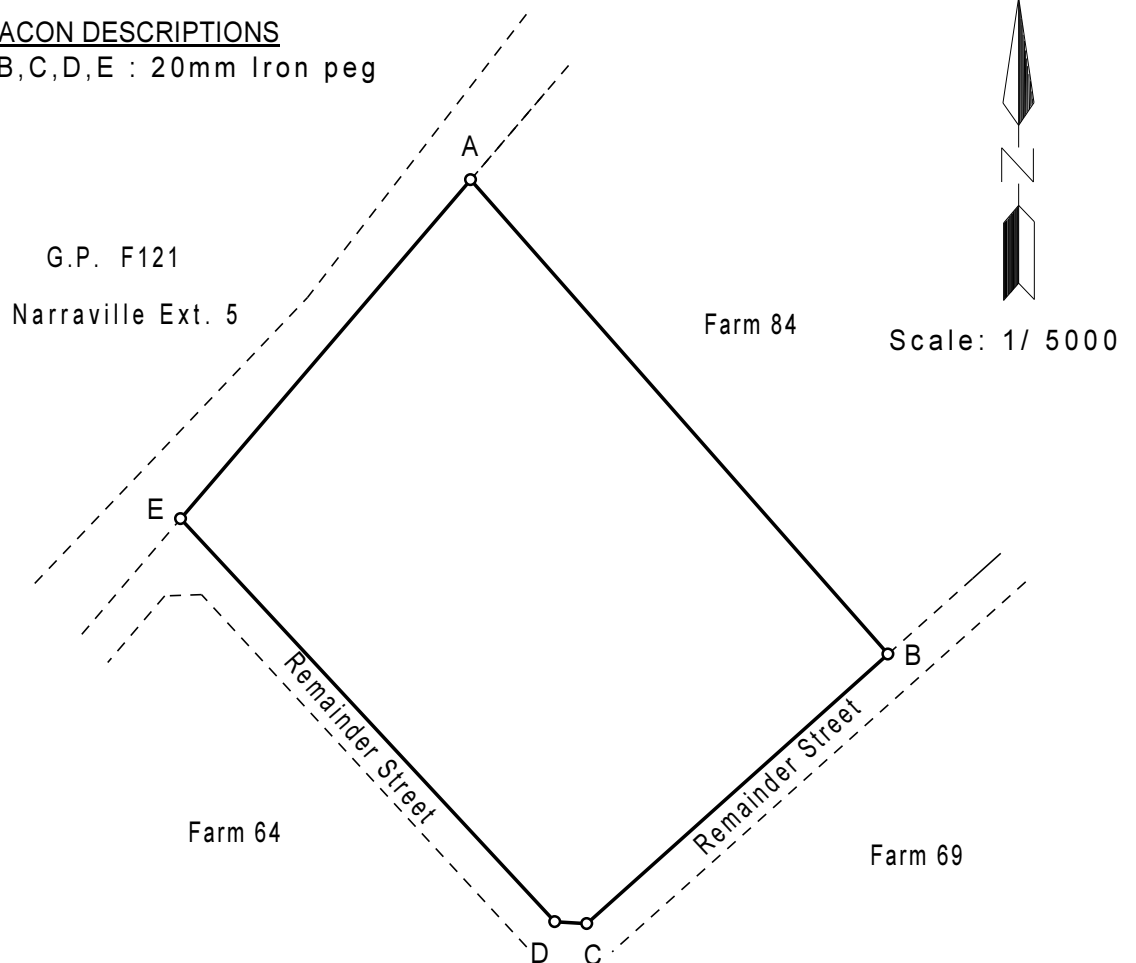
for SURVEYOR-GENERAL

SHEET 1 OF 1 SHEETS

SIDES metres	ANGLES OF DIRECTION	CO-ORDINATES Y System: Lo 22/15 X		Designation		
		Constants	0,00			
A B	417,84	318.39.00	A	+46 880,88	+103 623,06	X90
B C	267,21	48.11.00	B	+46 604,82	+103 936,72	X91
C D	21,21	93.13.00	C	+46 803,97	+104 114,88	X26
D E	363,69	137.07.50	D	+46 825,15	+104 113,69	X25
E A	294,90	220.32.50	E	+47 072,58	+103 847,15	11
CL12 ROOIKOP		⊙		+49 194,12	+106 315,28	
		△		+34 756,34	+108 574,68	

BEACON DESCRIPTIONS

A,B,C,D,E : 20mm Iron peg



The figure A B C D E represents 11,4258 hectares of land being
FARM 65
 (a portion of the Farm Wanderdunen No.23

Situate in the Municipality of Walvis Bay
 Registration Division F
 Erongo Region, Namibia

Surveyed in January 2015 and
 July 2016

CG Pieterse
 Professional Land Surveyor
 by me Registration Number: PLS 025

This Diagram is annexed to No. d.d. Registrar of Deeds	The original diagram is S.G. No. A530/2013 Transfer No. Dated:	File:F23 S.R. No.:E245/2016 G.P.No. Noting Plan MD-S23