



Submitted to: Karas Lithium Resources (Pty) Ltd  
Attention: Mr William Morrell  
Private bag 12012  
Ausspannplatz  
Windhoek, Namibia

# **I&AP PUBLIC CONSULTATION DOCUMENT: I&AP COMMENTS AND RESPONSES FOR THE EXPLORATION ACTIVITIES ON EPL 7574 FOR THE KARAS LITHIUM PROJECT, // KHARAS REGION, NAMIBIA**

**PROJECT NUMBER:** ECC-139-449-REP-14-D

**REPORT VERSION:** REV 01

**DATE:** 31 JULY 2023



## **TITLE AND APPROVAL PAGE**

Project Name: I&AP Comments and Responses for the Exploration Activities on  
EPL 7574 for the Karas Lithium Project, // Kharas Region,  
Namibia

Client Company Name: Karas Lithium Resources (Pty) Ltd

Client Representatives: Mr William Morrell

Ministry Reference: APP-0010357

Authors: Environmental Compliance Consultancy (Pty) Ltd

Status of Report: Final for public review

Project Number: ECC-139-449-REP-14-D

Date of issue: 31 July 2023

Review Period 31 July 2023 – 6 August 2023

## **ENVIRONMENTAL COMPLIANCE CONSULTANCY CONTACT DETAILS:**

We welcome any enquiries regarding this document and its content. Please contact:



Environmental Compliance Consultancy  
PO Box 91193, Klein Windhoek, Namibia  
Tel: +264 81 669 7608  
Email: [info@eccenvironmental.com](mailto:info@eccenvironmental.com)

## **DISCLAIMER**

The report has been prepared by Environmental Compliance Consultancy Pty Ltd (ECC) (Reg. No. 2022/0593) on behalf of the Proponent. Authored by ECC employees with no material interest in the report's outcome, ECC maintains independence from the Proponent and has no financial interest in the Project apart from fair remuneration for professional fees. Payment of fees is not contingent on the report's results or any government decision. ECC members or employees are not, and do not intend to be, employed by the Proponent, nor do they hold any shareholding in the Project. Personal views expressed by the writer may not reflect ECC or its client's views. The environmental report's information is based on the best available data and professional judgment at the time of writing. However, please note that environmental conditions can change rapidly, and the accuracy, completeness, or currency of the information cannot be guaranteed.

## **TABLE OF CONTENTS**

<b>1</b>	<b>Summary of public meetings and comments from I&amp;APs.....</b>	<b>5</b>
1.1	Introduction .....	5
1.2	Public Meetings Summary .....	5
1.3	Key feedback on issues of concern – public meetings .....	6
<b>2</b>	<b>Acknowledgements.....</b>	<b>8</b>
2.1	Detailed comments and responses from the public meetings .....	8

## **LIST OF TABLES**

Table 1 - Comments and feedback from the virtual meeting with the landowners over which the EPL falls.....	9
--	---

## ABBREVIATIONS

<b>Abbreviation</b>	<b>Description</b>
CSI	community sustainable investment
EAP	environmental assessment practitioner
ECC	Environmental Compliance Consultancy
e.g.	example
EIA	environmental impact assessment
EMP	environmental management plan
EPL	exclusive prospecting licence
ESIA	environmental and social impact assessment
GPS	Global Positioning System
I&APs	interested and affected parties
L	Litre
Ltd.	Limited
m	metre
m/day	metres per day
MEFT	Ministry of Environment, Forestry and Tourism
MME	Ministry of Mines and Energy
NBRI	National Botanical Research Institute
ORKCA	Orange River-Karoo Conservation Area
Pty	proprietary
RoD	record of decision

# 1 SUMMARY OF PUBLIC MEETINGS AND COMMENTS FROM I&APS

## 1.1 INTRODUCTION

Environmental Compliance Consultancy (ECC) has been engaged by Karas Lithium Resources (Pty) Ltd, the Proponent, to conduct an Environmental and Social Impact Assessment (ESIA) in accordance with the Environmental Management Act, No. 7 of 2007 and its regulations of 2012, for which an application for an environmental clearance certificate will be submitted for the exploration activities on EPL 7574 for the Karas Lithium Project, //Kharas Region, Namibia.

The proposed project (referred to as “the Project” herein) involves the exploration lithium oxide on EPL 7574. The EPL overlaps farms Pelladrift, Oranjevalle, Kambreek and Pelgrimrust and can be accessed via the B3 to Karasburg and then the C10.

The community directly affected and/ or interested parties, were identified and invited to attend the focus group meeting. A summary of the feedback received from the public will be issued to registered I&APs and competent authorities being the Ministry of Mine and Energy (MME), and the Ministry of Environment, Forestry and Tourism (MEFT) to accompany the application for an environmental clearance certificate, for a record of decision (RoD).

## 1.2 PUBLIC MEETINGS SUMMARY

The stakeholder meeting was facilitated by Monique Jarrett, Environmental Assessment Practitioner – Environmental Compliance Consultancy (ECC) with technical support from Carlene Baufeldt (ECC) and Mr William Morrell – Director of Karas Lithium Resources.

The welcoming and agenda of the meeting included an introduction to ECC as an independent environmental consulting company commissioned by Karas Lithium Resources (Pty) Ltd as the environmental assessment practitioner (EAP) to conduct the ESIA.

Mr Morrell gave the technical presentation for Karas Lithium Resources and provided an overview of the proposed operations on EPL 7574 on the Project’s location, baseline and ESIA process, and procedures were presented and an explanation of the Project’s current status. The objective of the public meeting was to engage stakeholders and to identify and address any concerns they had with the proposed Project.

Mr Morrell provided insight into the company's background and their goals and strategies for the Karas Lithium project in Namibia. Mr Morrell highlighted the importance and value of the Project relating to the environment and the economy.

To conclude the presentation the main components of the environmental assessment were further discussed. This included aspects and concerns about the impacts of exploration activity on biophysical, how mitigation and monitoring measures could potentially be enforced and how the attendees as registered I&APs could contribute to the process and development of the EMP. The floor was then opened for questions, comments, and further discussion.

### 1.3 KEY FEEDBACK ON ISSUES OF CONCERN – PUBLIC MEETINGS

The summary of comments received from the public meetings held presented useful and valuable input in setting out the scope for the environmental and social impact assessment through questions asked and points raised. From an overall review of the recorded statements, the key common themes of concern that were raised can be summarised in the following categories:

- **Water usage**

Questions were raised on where water would be obtained from during the exploration activities. There were concerns of how much water would be required and if water will be used during the drilling phase as water is already scarce in the area and distance to water that is safe for human consumption is quite far. The proponent assured the I&APs that they would bring water to site in tanks. The Proponent specified that they would use water for lubrication during the drilling process and use approximately 1500-1800 L of water per day.

- **Endemic/sensitive flora assessment**

A concern was raised on succulent plant species and possible sensitive and/or endemic species, as the area has a high flora biodiversity. There was a request for a full plant assessment as the area's biodiversity is not well researched and a desktop study may not be sufficient. Cross-border smuggling of these plant species was also mentioned as the EPL is close to the border. The proponent assured the I&APs that there will be an onsite plant assessment by a specialist prior to Prospecting activities and added information supplemented by a botanist, Antje Burke, if available. Cross-border smuggling will be added to the risk register and there will be supervision onsite to minimise the potential for cross-border smuggling.

- **Heritage and archaeological assessments**

The I&APs agreed that a heritage assessment is necessary as there are some heritage sites in the area and wanted more information on what the heritage and archaeological assessment entails and the area that will be covered. The environmental assessment practitioner (EAP) explained that there would be a desktop study to check the national heritage database for recorded sites and plan the archaeological assessment according to their findings, the aim however, is to cover as much of the EPL as possible with evidence provided (GPS tracking). The heritage assessment would be carried out by a heritage specialist followed by a verification study from the Heritage Council.

- **Poaching**

---

The issue of poaching was discussed and possible prevention methods during the exploration phase as the EPL is within a conservation area. The EAP explained that poaching is included in the environmental management plan (EMP), and the proponent will be held liable should any of the team members be involved in poaching activities.

– **Transportation of Equipment & road construction**

There were questions regarding the transportation of equipment that will be used during the exploration activities and concerns over road destruction or the construction of new roads that would have a visual impact and/or negatively impact the surrounding environment. The proponent explained that multiple alternatives would be considered including aerial ropeways in order to reduce the footprint impacts.

– **Compensation during the exploration phase and possible mining activities**

The I&APs had concerns that they may be faced with more negative impacts during the first phases of the exploration activities and requested more information regarding fair compensation. It was discussed in the land access agreement between the client and farm owners, there will be compensation discussions and negotiations including possible payment for services and any damage caused. The aim of Karas Lithium is to work collaboratively with farmers and stakeholders.

– **Timeline of processes and update of current/upcoming events**

Questions were raised regarding the timeline of explorations and how long I&APs can review the environmental assessment documents. The proponent gave a summary of the project and what it entails along with the duration of certain activities during the exploration phase. There was an agreement to allow I&APs a 14-day period to review the relevant documents.

– **Supervision of operations**

Concerns were expressed over the exploration team, supervision during activities and who would be in charge should issues come up. It was explained that Dr. Johan Hattingh, the exploration manager, would have a team of no more than 10 people for initial stages and 10 people per drill rig at later stages. All questions and concerns will be directed to him during the exploration phase.

---

## **2 ACKNOWLEDGEMENTS**

In closing of the meeting, ECC thanked all I&APs for their attendance and for providing valuable feedback during the stakeholder meeting. Through the stakeholder meeting process, the Proponent and ECC have endeavoured to provide a platform to hear and address all relevant comments put forward by I&APs.

ECC further endorsed the fact that constructive feedback from I&APs results in a more robust and improved ESIA. This process results in a project that is understood by the community and I&APs. The I&APs feedback will contribute to identifying the potential impacts to be assessed and concerns to be considered and addressed as the project progresses.

### 2.1 DETAILED COMMENTS AND RESPONSES FROM THE PUBLIC MEETINGS

The official public consultation period began on the 20<sup>th</sup> of April 2023 and remained open until the 5<sup>th</sup> of May 2023 for initial comments. Additional comments were received during the stakeholder meeting, via email and telephone which are included in the draft scoping report and this document in Table 1 below.

Further comments were welcome after the initial registration period and public review period and the public consultation period will remain open for I&APs until the final assessment report for the project is ready for submission to the competent authorities.



**Table 1 - Comments and feedback from the virtual meeting with the landowners over which the EPL falls.**

<b>Wednesday, 31 May 2023</b>			
Virtual (Zoom) Meeting			
<b>Name</b>	<b>Stakeholder Details</b>	<b>Comment/Question Received</b>	<b>Response/Clarification</b>
Jannie van de Merwe & Ed Barthorp	ORKCA	Boreholes available on Pelladrift are not safe for human consumption and therefore provision should be made for water for assessment specialists and during the exploration activities, e.g groundwater studies, yet the groundwater may be poor.	Comment Noted.
		Specialist studies will be needed for flora biodiversity. as there are highly sensitive and/ or endemic plant species in the area that are not well researched. Cross-border smuggling has been an issue.	A copy of a study from a botanist, Antje Burke was received, who has identified sensitive succulent species in the area, which will be taken into consideration. Cross-border smuggling will be added to the risk register to manage contactors and there will be supervision onsite to prevent cross-border smuggling.
		There are heritage sites in the area, so we are in agreement with a heritage assessment. What would the archaeological studies entail in terms of the large, mountainous area.	A desktop study to check the national heritage database for recorded sites will be done and the archaeological assessment will be planned according to their findings, but the aim is to cover as much of the EPL as possible with evidence provided. The heritage assessment would be carried out by a heritage specialist followed by a verification study from the Heritage Council.
		How can you ensure that poaching will not occur? We are in a conservation area, how will that be prevented?	Poaching is included in the EMP, and the proponent will be held liable should any of the team members or contractors be involved in poaching activities.

<b>Wednesday, 31 May 2023</b>			
Virtual (Zoom) Meeting			
<b>Name</b>	<b>Stakeholder Details</b>	<b>Comment/Question Received</b>	<b>Response/Clarification</b>
Pete Morkel	Farm Pelgrimrust	Elaborate on the drilling phase during the exploration activities.	The impact or disturbance will be minimal during the channel sampling. The drilling technique would be determined. Ore samples will be collected, processed and taken to the lab for chemical and metallurgical studies. Given the terrain, a light-weight diamond drill rig may be used.
		What transportation will be used for equipment; how will it impact road?	The drill rig can be carried to the site, as we have done before. Building a road is extremely expensive and may be destructive to the environment. Another route is pieces of the drill being carried by donkeys.
		Who oversees putting the finer details of the exploration activities in a document? Will we have an input before operations? We want to be sure that if we are not happy with what is proposed we can put a stop to the activities.	These details are normally listed in the EMP. The methodologies in the EMP can specify the preferred and appropriate activities. Impacts will be listed and the ECC team will identify mitigations as well as rehabilitation strategies. The EMP is a public document, and all reasonable input would be appreciated.
		We are living with the day-to-day negative impacts from the explorations along with time and effort in assisting assessment studies. Who covers the negativity that comes with activities? Is there fair compensation? How early can positive compensation occur?	In the land access agreement between the client and farm owners, there will be compensation discussions and negotiations. Rehabilitation will be included in the EMP and is legally binding. There is payment for hardship or inconvenience and Karas Lithium would like to work collaboratively with farmers and stakeholders.

<b>Wednesday, 31 May 2023</b>			
Virtual (Zoom) Meeting			
<b>Name</b>	<b>Stakeholder Details</b>	<b>Comment/Question Received</b>	<b>Response/Clarification</b>
			In the case where farmers can provide Karas Lithium with necessary resources, such as farm help and access to camp sites fair compensation will be provided. Karas Lithium want to be collaborative.
		What is the timeline of processes after approval and when will the actual activities occur? The number of people? When is the EIA going to happen? What is expected from us?	Pending is the Heritage assessment: This depends on when ECC can get the specialist onsite and how long the assessment and report may take. It takes a month to complete an impact report which will be submitted for your review for a week and after your comments and changes are incorporated, it will be submitted to the government for their review. It takes 3 - 6 months for approval.
		For the plant assessment will you only use the information given by Antje or will there be a more detailed study?	ECC would use the information from our desktop data, the study by Antje Burke and use additional information from the National Botanical and research institute (NBRI).
		After approval from MEFT, elaborate on activities.	The first phase will be exploration of the riverbed which would take up to a week. The second phase will be channel sampling when pegmatite of interest has been identified.
		How much water do you need? Are you going to bring it in by tanker? Do you need water for the drilling process? How long is the drilling rate?	Circumstances will dictate, however Karas Lithium will most probably bring a trailer and tractor to import water. We (Karas Lithium) will use 1500-1800 L of water per day. We do circulate most of the water. We (Karas Lithium) do use water in drilling for lubrication. The drilling rate is 10 m/day.

Wednesday, 31 May 2023			
Virtual (Zoom) Meeting			
Name	Stakeholder Details	Comment/Question Received	Response/Clarification
			6 months may be a good guess. After these technical studies will be done within 6 months followed by an ESIA process that could also take a few months
		Is the EAP paid by the proponent?	ECC is hired by Karas Lithium to undertake an ESIA, however it is an independent assessment. ECC has no specific interest in the success or failure of the project. As per the regulations of the environmental management act, any proponent is required to appoint an independent EAP to conduct the necessary studies.
		Can you possibly hire someone to do a full plant assessment as the succulents are of great concern.	Karas Lithium will commission a botanist to conduct a full biodiversity study should the Project progress to that stage.
Ed Barthorp	ORKCA	Why are mining activities not taken into account now? The whole point of exploration now is to do mining later.	We (Karas Lithium) don't know if there is potential mining after exploration activities. If mining is possible, proper steps will be taken regarding the EMP. It is our responsibility to ensure that impacts are mitigated and rehabilitated. We currently have an EPL allowing us to do exploration activities and we want to pursue that right in a responsible manner. We do not want a reputation of being a destructive mining company. There are international standards that define how to manage and mitigate impacts. We must act accordingly. We compensate any discomfort.

<b>Wednesday, 31 May 2023</b>			
Virtual (Zoom) Meeting			
<b>Name</b>	<b>Stakeholder Details</b>	<b>Comment/Question Received</b>	<b>Response/Clarification</b>
		Is there a budget provided in the EMP and a guarantee that the budget can be met?	No finances are discussed in any of the ESIA documents. Budget will be involved in the compliance to the EMP. The management plan sets the rules and Karas Lithium must comply with those rules.
		<p>Can we be provided with a spider diagram with the different people involved in the activities and their responsibilities including the stakeholders?</p> <p>Can a document be provided of all the current activities that are requested, with dates and descriptions.</p> <p>We require a 14-day period to review the scoping report.</p> <p>There are many emails which can also be confusing with short notices to requests. There are many new threads of emails. From now on, Jannie will be the sole point of contact from ORKCA with Ed and Andreia copied in.</p> <p>We would like to request that the archaeological specialist carry a GPS tracker during the assessment to prove that they covered the entire area.</p> <p>We would like to request an updated plant study as the area has a high biodiversity and is not</p>	<p>A 14-day review period is possible, provided that the proponent agrees.</p> <p>Just a note, ECC will submit the Heritage assessment on behalf of the specialist and the proponent for heritage consent to the heritage council, but the heritage council will use one of their own specialists to verify the findings of the independent heritage specialist.</p> <p>Possibly what the Proponent can do prior to drilling activity is to hire a botanist to assist with a site assessment and possibly relocate sensitive species if possible.</p>

<b>Wednesday, 31 May 2023</b>			
Virtual (Zoom) Meeting			
<b>Name</b>	<b>Stakeholder Details</b>	<b>Comment/Question Received</b>	<b>Response/Clarification</b>
		researched well. There is a high chance of encountering endemic succulents.	
		In the case of a successful exploration, do you tend to establish an environmental, social investment fund as part of your business model? And what percentage of your annual turnover is it normally? Has the trustees been established?	<p>Yes, it is part of the requirement of the community sustainable investment (CSI), to commit a portion of the turnover to CSI. That should cover both environmental and social impacts.</p> <p>At this point the Proponent is not sure if it will be a cash rich operation, what often happens is a is set up community trust to address the social aspect, as for the environmental impacts we need to look at offset, nurseries and how the Proponent can identify target specific projects where we can add benefits. This has been discussed with the Proponent.</p> <p>In response to the trustees: There will be a representation from the community and the company and an independent representation.</p>
		How and where will roads be built to access the mine, should mining activities go forward? We don't want roads to scar the landscape of the area, is it possible for it to be hidden as much as possible?	It will be part of the land access agreement. Existing roads and tracks will be used as much as possible. Any new roads maximise post-exploration land use opportunities but will be kept to a minimum. Stakeholders will be consulted beforehand about the design and location of the roads.

<b>Wednesday, 31 May 2023</b>			
Virtual (Zoom) Meeting			
<b>Name</b>	<b>Stakeholder Details</b>	<b>Comment/Question Received</b>	<b>Response/Clarification</b>
			Design will minimise footprint impacts as far as practically possible.
Pete Morkel	Farm Pelgrimrust	Who will supervise the operations? Who do I go to if I have issues?	The geological consultant's (Dr Hattingh) company will provide supervision of the drilling contractors. Regarding issues, you can report to Johan Hattingh.
		During mining operations, would you be pumping water from the groundwater from the orange river? We just want to make sure when moving from exploration to mining things won't get lost and everything will be properly addressed.	The Proponent may have to look at where they can position the treatment plant and that will have various factors that impact on its accessibility, the cost of getting water to plants, many of these aspects need to be considered. In the exploration phase they capture any lessons learned. If Karas Lithium do move forward with mining, a completely new environmental assessment and environmental management plan will be drafted to assess specific impacts.





## VACANCY

**UNIT MANAGER: THEATRE**

Welwitschia Hospital provides the best medical care in the region. Our aim is to ensure that the Walvis Bay community receives the most advanced, internationally accredited evidence-based medical service in a warm and genuinely caring environment. We are committed to building a team of passionate medical professionals who share our values and wish to deliver care beyond the expected. As an Equal Opportunity Employer in Namibia, Welwitschia Hospital invites suitable qualified candidates to apply for the below vacancy.

**KEY DUTIES AND RESPONSIBILITIES**

- Perform a vital role in the effective relationship management between the hospital and medical practitioners operating within the Operating Theatre departments.
- Motivate and lead direct subordinates and clinical staff through example by means of continuous adherence to Performance and Nursing Standards, Reporting Structures, Company Policies and Procedures, Standard Operating Procedures and relevant protocols.
- Execute all administrative, audit and managerial duties as operationally required from the Theatre Unit Manager, such as monthly reports, infection and Risk management strategies, Theatre stock and equipment control, gathering statistics and writing of Theatre nursing Standard Operating Procedures.
- Play an active role in the Recruitment and Selection of new clinical staff. Conduct and provide training to clinical staff who may require additional guidance or instruction.
- Perform continuous research to remain up-to-date with current knowledge, skills, Theatre techniques and trends on nursing care and hospital principles/practices.

**MINIMUM REQUIREMENTS**

- Namibian Citizenship or eligible to work in Namibia.
- Registered Nurse and Theatre Techniques Qualification will be an added advantage.
- 10 Years' working experience as a Registered Nurse in Theatre, of which at least 3 years were in a mid-management position.

**NON-NEGOTIABLE COMPETENCIES**

- Ability to guide team and individuals in order to ensure the highest standard of care is maintained, and dealing effectively with negative deviation of performance and behavioural standards & norms.
- Excellent interpersonal communication skills and willingness to deal with everyday challenges.
- Carry great knowledge of current Namibian Acts and Health & Safety legislation that influence patient care and rights.
- Availability and willingness to assist in case of emergencies at inconvenient hours, weekends or public holidays.

HOW TO APPLY

Interested applicants meeting the above-mentioned specifications and requirements are invited to apply for the vacancy by submitting their applications via [www.nta.com.na/hr@nta.com.na](mailto:hr@nta.com.na) or to [hr@nta.com.na](mailto:hr@nta.com.na).

Only shortlisted candidates will be contacted and must be willing to submit themselves to interview and selection procedures.

As per Affirmative Action (Employment) Act, Act 29 of 1998:  
Namibian Citizens from previously disadvantaged groups will enjoy preferential treatment.

CLOSING DATE: 28 APRIL 2023

## VACANCY

Swakop Uranium, a Namibian world class uranium mining company, invites people who are self-motivated, energetic and wish to work in a High Performance Culture environment, to apply for the following role:

## Planner: Field

To apply, please upload your CV and other recently certified AND verified/ authenticated relevant documents to [hr@swakopuranium.com.na](mailto:hr@swakopuranium.com.na), or scan the QR code, and/ or apply on the NTA's platform by following this link: <https://www.nta.com.na/nta/apply>.

NB: Please note that all relevant qualifications (Namibian qualifications included) must be recently certified and verified by the institution where it was obtained or the NQA. For more information regarding evaluation of qualifications, please visit [www.nta.com.na](http://www.nta.com.na).

SCAN ME

### NOTICE OF AN ENVIRONMENTAL ASSESSMENT FOR THE PROPOSED KARAS LITHIUM PROJECT ONE PL 7574, (//KHARAS REGION, NAMIBIA)

Environmental Compliance Consultancy (Pty) Ltd provides this notice to members of the public that an application for an environmental clearance certificate in accordance with the Environmental Management Act, No. 7 of 2007 will be made for the proposed Karas Lithium project on EPL 7574, //Kharas Region, Namibia. Members of the public are invited to register as an interested and affected party (ISAP), and invited to attend a public meeting and provide input into the environmental clearance certificate application process.

Applicant: Karas Lithium Resources (Pty) Ltd.  
Environmental Assessment Practitioner (EAP): Environmental Compliance Consultancy

Location: //Kharas Region, Namibia  
Project Location: Located in the Karasburg district, south of Karasburg near the Orange River and can be accessed via the B5 to Karasburg, turn off onto the D1 and then turn off onto the D336 road.

Proposed Activity: Karas Lithium Resources (Pty) Ltd proposes to explore for lithium by identifying the potentially mineral rich areas using various exploration techniques. The Proponent proposes to conduct the following activities: geological mapping, geotechnical surveys, ground and airborne geophysical surveys, stream sampling and drilling.

ISAPs Registration: The purpose of the registration period is to introduce the proposed project and to allow interested and affected parties (ISAPs) to register and comment on the project and to ensure that potential issues and concerns are brought forward, so that they can be considered and assessed during the impact assessment process.

The registration period is effective from 20 April 2023 to 5 May 2023. ISAPs and stakeholders are required to register for the Project at: <https://www.environmental.com.na/submit-the-proposal-request-for-environmental-clearance>, or call ECC to register.

The team at ECC will maintain contact with registered ISAPs to engage and to keep them informed as the EIA process develops. ECC will also provide registered ISAPs input opportunities and review periods throughout the assessment process.

Contact: Environmental Compliance Consultancy  
PO Box 9193, Main Windhoek | Tel: +264 81 669 7608 | E-mail: [info@ecc.com.na](mailto:info@ecc.com.na)  
Website: [www.environmental.com.na/projects](http://www.environmental.com.na/projects)

## Vacancy [va kən sē]

noun  
An unoccupied position or job.

---

**GENERAL MANAGER:  
HUMAN RESOURCES (GRADE E2)**

Duty Station: Head Office  
Reporting to: Chief Executive Officer  
Purpose: To strategically lead the HR function, in line with best practice and standards.

**Key Performance Areas:**

- Budget Management: Participate in annual budgeting, monitoring and control processes.
- Strategic Planning: Participate in strategic planning and execution
- Human Resources Leadership: Develop and ensure implementation of and compliance to all human resources policies and procedures, including recruitment and selection, remuneration and benefits, training and development, employment equity, employee wellness, performance management and employee relations.
- Stakeholder Management: Engage with stakeholders on HR and other relevant strategic matters.
- Leadership: Provide strategic direction to all Human Resources employees.

**Minimum Qualifications and Experience:**

- A Master's Degree in Human Resources Management, or equivalent qualification, from a recognised institution (NQF Level 09).
- Ten (10) years' relevant experience, of which five (5) years' at a middle management and two (2) years' at a senior management level.

**Other Competencies and Knowledge**

- Lateral thinking skills
- Strategic and operational planning skills
- Analytical skills
- Risk assessment skills
- Business systems applications skills
- Inductive- and deductive reasoning skills
- Interpersonal communication skills
- Financial analysis skills

**Other Requirements**

- Driver's Licence

**Closing Date: 8 May 2023**

Applications should be emailed to: [hr@nta.com.na](mailto:hr@nta.com.na) or couriered and hand-delivered at NTA Village, Rand Street, Khomasdal (former Rössing Foundation), P.O. Box 70407 Khomasdal, Tel +264 61 2078 550.

The NTA is an Equal Opportunity Employer and candidates from designated groups are encouraged to apply. Kindly note that reference checks and competency assessment tests will be conducted and qualifications will be verified. Only shortlisted candidates will be contacted. Only certified documents will be accepted. All applicants with foreign qualifications must submit their application(s) by attaching their Namibia Qualifications Authority (NQA) evaluation results/records.

The NTA reserves the right not to make any appointment in this position.

Enquiries:  
[hr@nta.com.na](mailto:hr@nta.com.na)

## PROCUREMENT NOTICE

MTC hereby invites companies to participate in the following procurement opportunity:

**MTC24/23/O: REQUEST FOR PROPOSAL FOR THE LEASING OF A WAREHOUSING SPACE TO MOBILE TELECOMMUNICATIONS LIMITED (MTC)**

**BRIEFING MEETING:**  
Wednesday, 26<sup>th</sup> APRIL 2023 @ 10h00 (Namibian Time)

**VENUE:**  
Microsoft Teams, the link will be on the MTC website

**CLOSING DATE:**  
05<sup>th</sup> MAY 2023 by 14h30 (Namibian Time)

Tender documents are available at: [www.mtc.com.na/procurement](http://www.mtc.com.na/procurement)

@mtc.com.na

---

## APPENDIX B - STAKEHOLDER LETTERS

---

**Environmental Compliance Consultancy (Pty) Ltd**  
PO Box 91103 Klein Windhoek Namibia  
info@eccenvironmental.com  
www.eccenvironmental.com  
+264 81 669 7608



---

ECC-139-449-LET-13-A

22 May 2023

### **Identified Stakeholders and potentially interested or affected parties**

Dear Stakeholders,

#### **RE - NOTIFICATION OF ENVIRONMENTAL ASSESSMENT FOR THE PROPOSED KARAS LITHIUM PROJECT FOR LITHIUM EXPLORATION ACTIVITIES WITHIN EPL 7574, //KARAS REGION, NAMIBIA.**

Environmental Compliance Consultancy (ECC) has been engaged by Karas Lithium Resources (Pty) Ltd, the Proponent, as their environmental assessment practitioner to conduct the environmental clearance certificate application in terms of the Environmental Management Act, No. 7 of 2007 for the proposed lithium exploration activities within EPL 7574.

The proposed Project is in the Karasburg district, south of Karasburg near the Orange River. The Proponent proposes to explore for lithium by identifying the potentially mineralised areas using various exploration techniques, such as sediment sampling, geophysical surveys, geological mapping and drilling.

This letter is intended to engage potentially interested and affected parties (I&APs) for the Project and to provide a communication channel to ECC while the environmental and social impact assessment (ESIA) is in process.

Public participation is an important part of the ESIA process, as it allows the I&APs to obtain information about the proposed project and provide feedback to the assessment practitioners.

For this reason, ECC would like to have a focused meeting with you and the neighbouring farms over which the EPL falls to discuss any concerns and answer questions you may have.

**Date:** 31 May 2023

**Time:** 17:00

**Venue:** Warmbad Public Library

Should you require further information about the project or wish to register as an I&AP to receive ongoing

**Date:** 31 May 2023

**Time:** 17:00

**Venue:** Warmbad Public Library

Should you require further information about the project or wish to register as an I&AP to receive ongoing updates about the Project please feel free to download the BID and register using the link below:

<https://eccenvironmental.com/download/the-proposed-exploration-of-industrial-minerals-on-epl-7574-kharas-region-namibia/>

Or if you are unable to complete the registration form online, please contact us via email for assistance at [info@eccenvironmental.com](mailto:info@eccenvironmental.com).

Additionally, as the exclusive prospecting licence incorporates portions of your farm, our team along with the proponent would kindly like to request access to your farm to conduct a site visit on the 31<sup>st</sup> of May 2023 – 1<sup>st</sup>

Environmental Compliance Consultancy (Pty) Ltd | Registration Number: 2022/0593

1

+264 81669 7608  
info@eccenvironmental.com  
www.eccenvironmental.com  
PO BOX 91193  
Klein Windhoek  
Namibia



of June 2023 and would require vehicle access. This visit would consist of simply walking around to evaluate any sensitive areas, flora, fauna, or heritage sites that should be considered during the impact assessment.

ECC values community input and participation in our projects and we look forward to working with you through the assessment process.

Should you have any questions or require additional information please do not hesitate to contact our office, and a team member will assist you.

Yours sincerely,



**Stephan Bezuidenhout**  
stephan@eccenvironmental.com



**Jessica Bezuidenhout Mooney**  
jessica@eccenvironmental.com

## APPENDIX C - SITE NOTICES



**GPS Coordinates:**

**Lat:** -28.74540901

**Long:** 19.1149883



**GPS Coordinates:**

**Lat:** -28.813772201

**Long:** 19.09729576

## **APPENDIX D – BID**

## APPENDIX E – VIRTUAL FOCUS MEETING INVITATION



Monique Jarrett <monique@eccenvironmental.com>

### 139-449: Request for access to farm from 31st of May to 1st of June

1 message

Monique Jarrett <monique@eccenvironmental.com>

26 May 2023 at 15:18

To: Anke Stegmann <anke.stegmann@me.com>, andreia pawel <andreia@orkca.org>, Ed Barthorp <ed@orkca.org>, Johannes Van De Merwe <jannie@orkca.org>, petemorkel@gmail.com, peter koep@gmail.com  
Cc: Kelly Ochs <kelly@eccenvironmental.com>, AllRound Namibia <logistics@iway.na>, "William Morrell (OTR)" <william@optiterrae.com>, Jessica Bezuidenhout <jessica@eccenvironmental.com>, Stephan Bezuidenhout <stephan@eccenvironmental.com>, James Lumley <jlumley1967@icloud.com>, hattingh@creo.co.za

Dear Mr Morkel, Ms Stegmann and Mr Koep,

ECC is a team of experienced environmental consultants who value the protection of biodiversity and livelihoods above all else. With that said we are an environmental consulting firm and do not partake in mining or exploration activities, we are only involved in the environmental and social impact assessment and monitoring thereof.

Our site visits that are conducted during scoping and environmental impact assessments are solely to assess any sensitive habitats or protected species which may occur on site, along with the desktop studies we conduct to establish a baseline of the biophysical and social environment. We then continue to base our assessments against that established baseline. These visits do not require us to analyze the entire site and would not require more than a day.

Should we require a more in-depth study to be conducted such as the heritage assessment that needs to be conducted, we commission specialists to conduct these studies. Should accommodation, a guide etc be needed along with that specialist's scope of work, that will be thoroughly discussed and arranged with you in advance.

Nonetheless, we understand your concerns and are more than willing to provide any documentation you may require before any site visits may be arranged.

However, due to the fact that there has been very little response from the I&APs for a focused group meeting, we would like to recommend a virtual meeting instead to discuss the Project with you both and any other interested parties that may be interested to join. I will send out an invite on Monday.

Additionally, we will need to conduct a heritage assessment but I will contact you both individually throughout the course of this week to arrange that.

Should you have any further questions or concerns please do not hesitate to contact us.

Kind regards,

Monique Jarrett

Environmental Compliance Consultancy (ECC)

Position: Environmental Practitioner

Office Tel: +264 81 669 7608

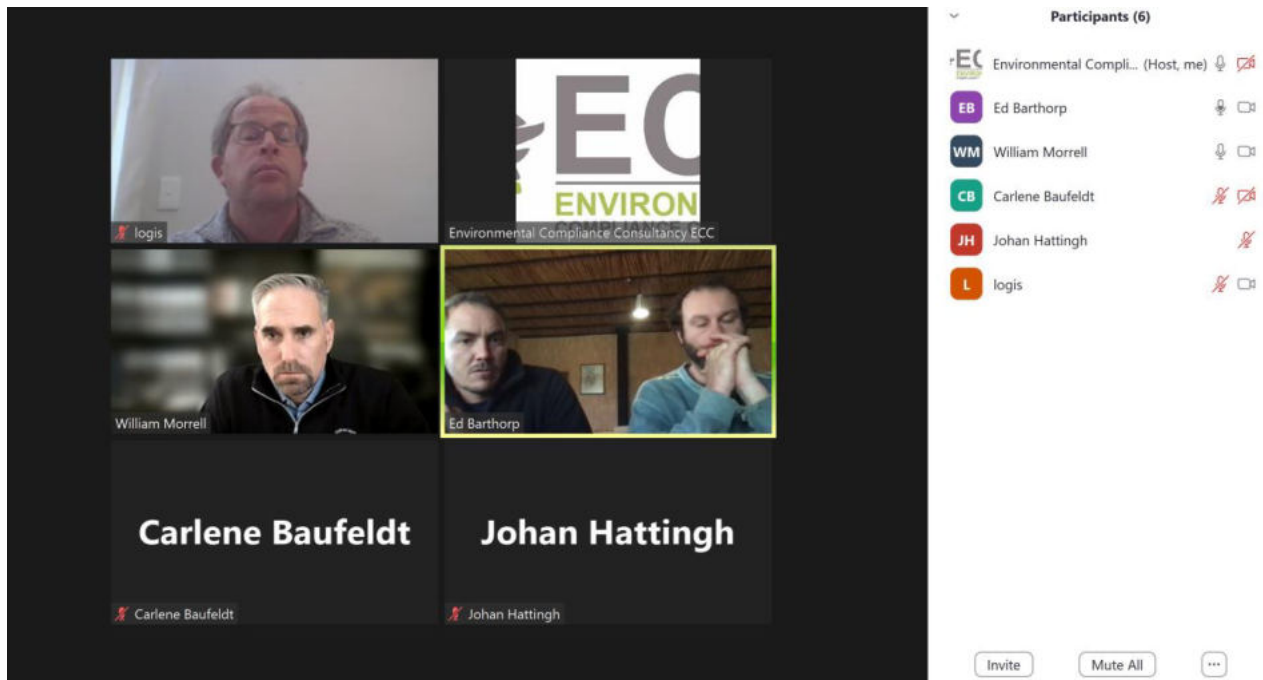
Postal: PO BOX 91193 | Klein Windhoek | Namibia

Address: 1 Jan Jonker St | Wasserberg Park | Klein Windhoek | Namibia

Email: [monique@eccenvironmental.com](mailto:monique@eccenvironmental.com)

Website: [www.eccenvironmental.com](http://www.eccenvironmental.com)

## APPENDIX F – ATTENDACE REGISTERS



Name	Organisation/farm they represent
William Morrell	Director of Karas Lithium Resources (Pty)
Dr Johan Hatting	Senior Geologist for Karas Lithium Resources (Pty)
Jaco van Vuuren	Logistics manager for Karas Lithium Resources (Pty)
Pete Morkel	Owner of Farms Kambreek and Pelgrimrust
Anke Stegmann	Owner of Farm Oranjevalle
Ed Barthop	Representative of ORKCA
Johannes van de Merwe	Representative of ORKCA
Monique Jarrett	ECC
Carlene Baufeldt	ECC
Kelly Ochs	ECC



<b>Name</b>	<b>Organisation/farm they represent</b>
Veto Islasia Katjivena	ECC

## APPENDIX G – STAKEHOLDER MEETING PRESENTATION



**Exploration on EPL 7574**  
ESIA PROCESS  
SCOPING PHASE  
31 May 2023

**Welcome**



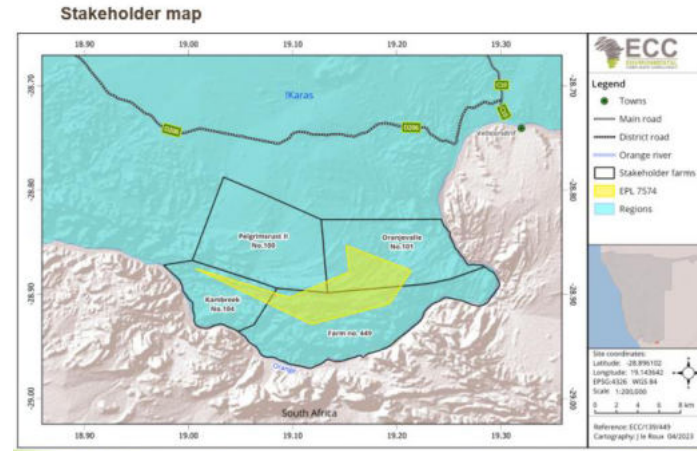
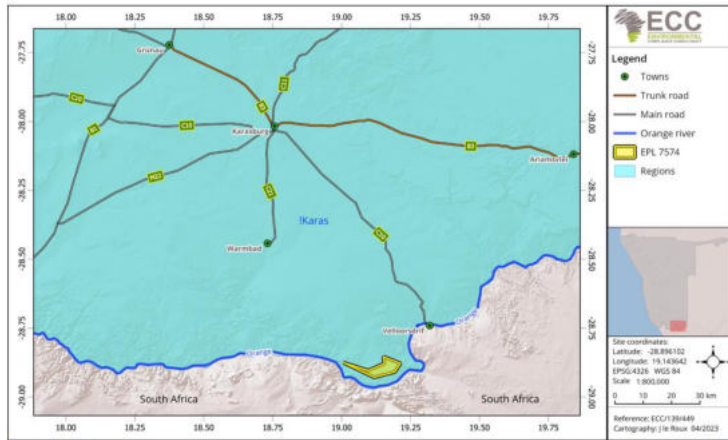
www.eccenvironmental.com

**AGENDA**

- Background Information
- Karas Lithium Presentation – *Presented by William Morrell*
- Public Participation
- Environmental & Social Impact Assessment (ESIA) – *Presented by ECC*
- Questions and answers

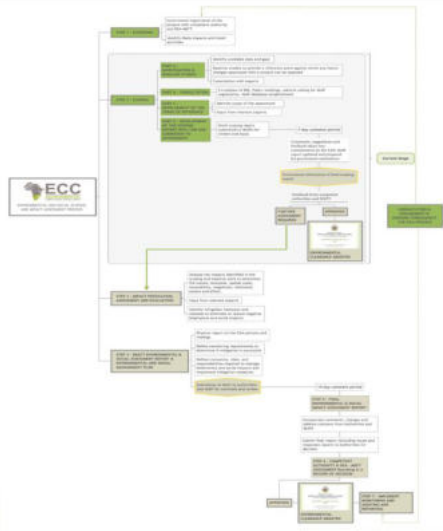
**Main Objectives of the ESIA**

- ✓ Provide information describing the planned Karas Lithium EPL 7574 and associated activities;
- ✓ Provide an independent environmental and social impact assessment of the activities associated with the proposed exploration project; and
- ✓ Describe management and mitigation measures associated with any identified potential impacts where necessary.



**ESIA Process**

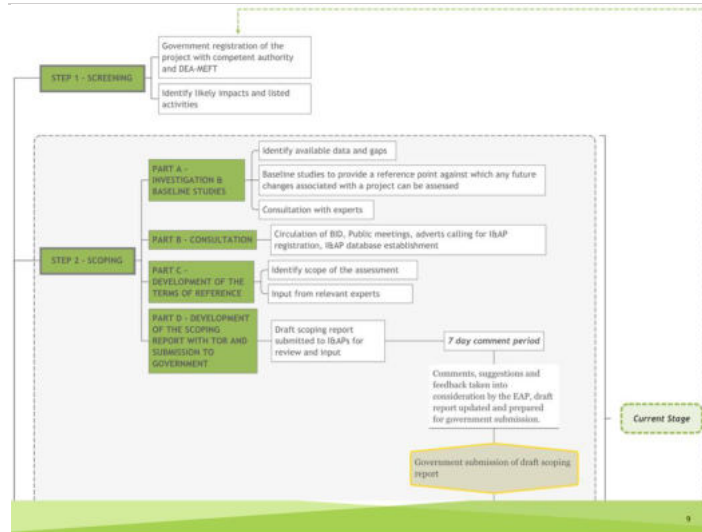
- Screening - APP-0001259 (DEA PORTAL)
- Scoping and Assessment – Current Phase
  - Public Participation



**ESIA Process**

- Screening – APP-0001259 (DEA PORTAL)

ACTIVITIES THAT TRIGGERED A CLEARANCE CERTIFICATE APPLICATION
WASTE MANAGEMENT, TREATMENT, HANDLING AND DISPOSAL ACTIVITIES
MINING AND QUARRYING ACTIVITIES
FORESTRY ACTIVITIES
WATER RESOURCE DEVELOPMENT
HAZARDOUS SUBSTANCE TREATMENT, HANDLING AND STORAGE



## Company Highlights

**Diversified African Lithium Assets in Namibia and Madagascar**

- Securing multiple exploration and mining licenses in both areas offering stability and a broad range of opportunities at various stages of development for lithium extraction.
- Positioned in regions demonstrated to be rich in lithium resources, ensuring access to high-grade lithium deposits for long-term profitability.
- Committed to environmentally and socially responsible practices, ensuring robust operations and fostering positive relationships with local communities.
- Advanced Exploration: Utilizing advanced remote sensing technology and innovative techniques to optimize lithium identification, maximizing resource potential.
- Efficient extraction and enrichment: access to energy efficient beneficiation technology to reduce operating costs and reduced environmental impact.

**World-Class Capability in Mineral Resource Project Design, Development, and Operations**

- Resource Assessment: Leveraging advanced geospatial technology to identify and evaluate high-grade lithium resources in Namibia and Madagascar.
- Project Development & Management: Streamlining the lithium extraction process through efficient project planning, execution, and management.
- Market Analysis & Strategy: Analyzing global lithium market trends to make informed decisions and position the company for long-term growth.
- Environmental and Social Stewardship: Implementing sustainable mining and beneficiation practices to minimize ecological impact and protect local ecosystems while providing meaningful employment and development opportunities for local communities.

**Veteran Mining Management Team with a Proven Record of Operational Excellence**

- Team of industry experts with a proven track record in lithium exploration and mine development in Africa, ensuring successful execution of projects, including experience in handling over US \$4 billion worth of projects over 20 years.
- Collaborating with strategic partners, including financial institutions, government entities and industry leaders, to secure access to mineral resources and drive growth.



## Company Overview

Continental Lithium Africa is a mineral resource development company providing practical and value-driven strategies for project identification, design, development, and operations, targeting the massive untapped African lithium and battery metals resources opportunity.

The company has built a team of experienced miners and project developers, leveraging advanced technologies and proven methodologies, to navigate the complex mining industry value chain. The company is committed to sustainable mining practices and strong community engagement, ensuring environmentally responsible operations.

The company is developing a portfolio of lithium properties in Namibia and Madagascar. With significant progress made in remote sensing, mapping, and site assessments, the company has identified and secured promising prospects and provided guidance on the next steps for exploration and development. Experience in efficiently developing greenfield projects will maximize value for shareholders and partners.



**Our vision is to become the leading African-focused miner in sustainable lithium production, leveraging the continent's vast resources to power the clean energy revolution.**

### EV Battery Market is Driving Lithium Demand

- The global demand for lithium is expected to surpass 2 million metric tons of lithium carbonate equivalent
- by 2030, more than doubling the demand forecast for 2025. In the next decade, increases in battery demand for electric vehicles (EVs) will be a major driver for lithium consumption.

The EU and increasingly more US states aim to ban petrol/diesel car sales by 2035, prompting car makers like GM, Ford, Tesla, and Volvo to invest in energy cooperates for lithium, which is in short supply.

Projection of worldwide lithium demand from 2015 to 2030 (in 1,000 metric tons of lithium carbonate equivalent)

Year	Demand (1,000 metric tons)
2015	100
2016	120
2017	150
2018	180
2019	220
2020	280
2021	350
2022	450
2023	550
2024	650
2025	750
2026	850
2027	950
2028	1050
2029	1150
2030	1250

### "White Gold" Lithium Supply Shortage

The supply of lithium is expected to face chronic shortages by 2030, even with the addition of new mining and recycling projects. This is due to a projected fall in the amount of lithium extracted from deposits around the world and the heavy concentration of refining capacity in only a few countries. Increasing production is challenging due to environmental hazards and the vast amounts of water required for conventional extraction methods. New technologies hold promise for reducing the environmental impact, but the challenge is to deploy them at scale.

Continental Lithium Africa has identified energy and resource-efficient concentration and extraction technologies, significantly reducing the impact of lithium production.

A Lithium Supply Shortage is Expected by 2030  
 Forecasted global lithium supply and demand (in million tons LCE)

Year	Mines in operation	Projects now under construction	Projects now extraction	Total Supply	Lithium demand
2020	4.4	0	0	4.4	4.4
2025	10	10	0	20	15
2030	15	15	10	40	60

### Africa's Lithium Boom: MASSIVE UNTAPPED RESOURCES

Africa is emerging as a leading lithium supplier over other countries, and forecasted to supply a fifth of the world's lithium by 2030, according to commodity trading giant Trafigura.

China, the leader in global lithium, is investing heavily into Africa. After Zimbabwe, Namibia is the next country in Chinese investors' sights.

- In March 2023, Huayou Cobalt made a symbolic investment in Askani, an Australian firm exploring in Erongo and Us areas of Namibia.
- Xinfeng, a Chinese exploration company active in Erongo, Namibia, has mined tens of thousands of tonnes of raw lithium ore and shipped it to China.

Madagascar has not been on the industry's radar screen due to the hiatus in license approvals and is now drawing attention with a new mining code up for approval, backed by World Bank and IMF initiatives. This shift offers our company a unique chance to leverage our Malagasy network for priority access to valuable resources.

Forecast mine output  
 (thousand tonnes of lithium carbonate equivalent)

Year	Zimbabwe	Democratic Republic of Congo	Chad	Mex	Namibia	Total
2020	0	0	0	0	0	0
2021	0	0	0	0	0	0
2022	10	0	0	0	0	10
2023	20	0	0	0	0	20
2024	30	0	0	0	0	30
2025	40	0	0	0	0	40
2026	50	0	0	0	0	50
2027	60	0	0	0	0	60
2028	70	0	0	0	0	70
2029	80	0	0	0	0	80
2030	90	0	0	0	0	90

## Our Capabilities Across the Value Chain

Continental Lithium Africa has the international expertise and relationships to overcome challenges of setting up processing plants in Africa, including supply chain management.

The EU and increasingly more US states aim to ban petrol/diesel car sales by 2035, prompting car makers like GM, Ford, Tesla, and Volvo to invest in mining companies for lithium, which is in short supply.

<b>Focused Due Diligence</b> Comprehensive assessments including market, technology, geography, resources, environment and stakeholder considerations.	<b>Exploration &amp; Data Management</b> Use of industry experts with deep pegmatite knowledge for designing, managing and analyzing exploration activities ensuring robust data and modeling outputs.	<b>Portfolio Management &amp; Valuation</b> Balanced project selective approach based on key drivers, including market conditions, funding, sovereign risk, partners selection, skills availability, and economic metrics for valuation.	<b>Project Execution Strategy &amp; Implementation</b> Tailored solutions with optimal cost/risk balance, considering project specific capabilities, tender, scope, environment, infrastructure, cost and safety, as a range of execution methods from self perform to LSTK.
<b>Contracting &amp; Procurement</b> Efficient, transparent processes with quantitative bid analysis for mitigating risk, improving bottom line and protecting reputation.	<b>Construction Management</b> Owner-driven, customized construction management solutions with key tools and partnerships for effective project execution.	<b>Mine Design &amp; Fleet Optimization</b> Expert guidance in design, valuation, equipment selection, and metallurgical optimization for improved productivity and reduced operating costs.	

## Lithium in Namibia: Karas Region

In Namibia, Continental Lithium Africa has already secured two Exclusive Prospecting Licenses in the Karas region of Southern Namibia and is negotiating ownership of a further two licenses in the same highly prospective area. Advanced spectral analysis and infrared remote sensing have identified promising pegmatite bodies across all EPLs. Sampling plans have been initiated to demonstrate the pegmatite grades. A comprehensive geological review is in progress, detailing the pegmatites and evaluating their potential for economic lithium potential.

Our current work includes creating drainage maps for each EPL to enable stream sampling to pinpoint lithium-bearing pegmatites. We have implemented a focused stream sediment sampling program targeting tributary junctions for essential data collection and high-grade orebody identification. After identifying lithium-rich pegmatites, we will conduct channel sampling across the economically attractive pegmatites, followed by an extensive drilling program on the most promising sites, bringing us closer to realizing the full potential of our resources.

## Lithium in Namibia: Cape Cross - Uis Area

Continental Lithium Africa is exploring the Cape Cross-Uis Pegmatite Belt (CUPEB) area, which stretches from the coast at Cape Cross in a 24 km wide and 115 km long zone of mineralisation extending to just east of the settlement and its mine at Uis, with significant mineralization potential.

Reconnaissance work for the CUPEB is nearing completion. The region is characterised by shearwash sediments and dune ridges, which obscure the underlying substrata. Despite competition from larger miners targeting the well-known pegmatite swarms, ample opportunities exist for further exploration and development in the area.

Prior field work experience in this region has bolstered our confidence in the area's prospectiveness. We are in negotiation with several EPL holders to contribute their properties to the CUPEB portfolio of projects currently being assessed.

## Lithium in Namibia: Cape Cross - Uis Area

Continental Lithium Africa has already secured 12 mining claims, which are being converted into mining licences and four EPLs and adjacent to this mineralized zone of Cape Cross - Uis Area.

## Government & Global Interests in African Resources



**Amos Hochstein**

*"We would like to see American and European and Australian investment into African supply chains"*  
(Digital Press Briefing, November 9, 2022)

Joe Biden's Energy Security Events visited Africa and Namibia, emphasizing U.S. investment strategy in Africa's minerals, promoting competition among economies and companies.



**Anthony Viljoen**

*"We believe this province [Erongo] will become a globally significant metallogenic province for new technology metals"*  
(Africa Mining, Annual Report 2021)

Andrade's CEO, anticipates global significance for Erongo. The region is lithium and other critical energy transition metals, including tin and tantalum.



**Thierry Breton**

*"Visit on the ground in Uto in Namibia of one of the potential largest lithium hardrock mine[s] in the world."*  
(Jan 24, 2023)


EU Internal Markets Commissioner, overseeing the bloc's strategy for critical minerals supplies, identifies Namibia's Uto region as having the potential to host the world's largest lithium hard-rock mine.




## ESG

At Continental Lithium Africa, our dedication to Environmental, Social, and Governance (ESG) principles drives us to create shared value by prioritizing safety, environmental responsibility, and inclusivity. We strive to maximize our operation's positive impact on local communities and surpass regulatory standards to achieve the highest level of environmental performance.

Our lithium projects emphasize a reduced carbon footprint and lower greenhouse gas (GHG) emissions compared to traditional pegmatite mining, demonstrating our commitment to sustainability and eco-friendly practices. We base our social and environmental management plans on global best practices and standards.




## Our Values




**Transparent & Open Communication**

Comprehensive assessments including market, technology, geography, resources, environment and stakeholder considerations.




**Efficiency & Performance**

Assistance with key personnel, progress reviews, supplier selection and data management for effective exploration programs.



**Trust & Integrity**

Our strong reputation is built on a solid code of conduct and business ethics that guide every aspect of our operations, ensuring we remain beyond reproach.



**Safety & Security**

We carefully assess risks in mining operations, including physical, political, environmental, and legal factors, to safeguard your team and investments.

## Management Team and Advisors

**Steve Mynott**

Steve Mynott is a seasoned professional in the mining and resource sector, with a notable record of leadership within both private and public companies, holding various executive roles. He has demonstrated exceptional team management skills while successfully advancing multiple resource projects.

Over his distinguished career, Steve has actively raised substantial funding for diverse organizations, cementing strong relationships with a global network of investors and financial institutions across North America, Europe, and Japan. His robust communication and networking abilities have proven instrumental in driving the growth and success of the companies he has been part of, underpinning his valuable contributions to the industry.

**William Morrell**

William is a seasoned professional in the metals and mining industry, with a strong focus on sustainable and responsible development, his vast extensive knowledge across various aspects of the sector, including exploration, project acquisition and operations management. With experience in 10 countries and having initiated projects worth US\$ 4.9 billion, William has gained multi-continentally expertise and demonstrated his ability to create dynamic and motivated teams for exceptional performance in the industry.

William holds a B.Sc. in Mining Engineering, a Graduate Diploma in Mineral Economics, a Master in Mining Engineering, and an MBA with Dean's list recognition. His key industry skills include project financing, logistics management, exploration, sales and marketing, business re-engineering, government relations, and CSR management. In his career, he has also managed procurement worth US\$ 863 million and achieved a F&EB million level 133 time bonus.

William founded CS&G Terres Resources, an advisory firm specializing in helping asset owners develop and implement projects responsibly and efficiently. He has held leadership positions in various organizations, including CEO of International Gulf Mining and Dynamic Mining S&A, CEO of Guinea Alumina Corporation (an Exxaro Group Alumina subsidiary) and Chief Commercial Officer (Senior VP Early-Stage Studies and Operations) at Capricorn Africa. William's extensive experience and skills make him a valuable asset in the global metals and mining industry.

**James Lumley**

James Lumley is an experienced professional in the mining and resource sectors, as well as property investment. He has held various executive positions, including Chief Executive Officer, Business Unit Head, and Project Director. He was most recently the Business Unit Head for Continents at Tercon Resources, where he is responsible for managing and developing potential assets and iron ore projects.

Previously, he served as CEO at Anglo-African Minerals private Resource Pty. and PAMA Resource Limited, successfully securing millions of dollars in funding and managing government relations in multiple countries in the property investment sector. James was the Managing Director of Iron Circle Limited, overseeing the company's rapid growth in turnover, and asset strategy. James started his career with Barclays Bank working through to the Capital Markets in London.

He holds an MBA in Finance and business studies and has completed graduate teaching and finance exams. James has a history of building strong working relationships with government bodies, investors, and financial institutions, and has successfully negotiated several major deals and memoranda of understanding throughout the African continent.

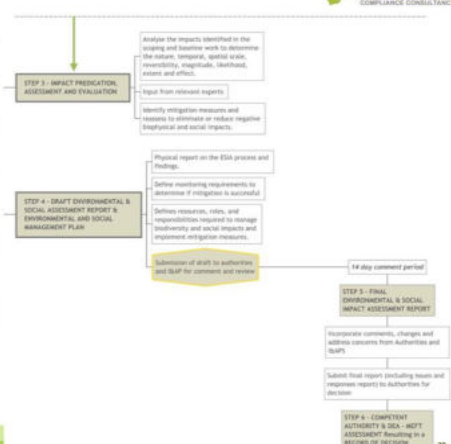
Expert guidance in design, valuation, equipment selection, and metallurgical optimization for improved productivity and reduced operating costs.





### Process

- Screening - APP-0001259 (DEA PORTAL)
- Scoping and assessment phase – Current Phase
  - Impact prediction and evaluation of alternatives,
  - Assigning mitigation measures
  - This phase culminates in the drafting of the Scoping plus impact assessment report and draft Environmental Management Plan (EMP) and
  - Submission to the appropriate competent authorities.



The flowchart details the following steps:

- STEP 3 - IMPACT PREDICTION, ASSESSMENT AND EVALUATION:**
  - Analyse the impacts identified in the scoping and baseline work to determine the nature, temporal, spatial scale, reversibility, magnitude, likelihood, extent and offset.
  - Input from relevant experts
  - Identify mitigation measures and reasons to eliminate or reduce negative (biophysical and social) impacts.
- STEP 4 - DRAFT ENVIRONMENTAL & SOCIAL ASSESSMENT REPORT & ENVIRONMENTAL AND SOCIAL MANAGEMENT PLAN:**
  - Physical report on the EIA process and findings.
  - Define reporting requirements to determine if mitigation is successful.
  - Define resources, roles, and responsibilities required to manage (biophysical and social) impacts and implement mitigation measures.
  - Submission of draft to authorities and staff for comment and review.
- 14 day comment period**
- STEP 5 - FINAL ENVIRONMENTAL & SOCIAL IMPACT ASSESSMENT REPORT:**
  - Incorporate comments, changes and address concerns from Authorities and staff.
  - Submit final report (including reasons and responses) to Authorities for decision.
- STEP 6 - COMPETENT AUTHORITIES & DEAs - BEST ASSESSMENT Resulting in a RECORD OF DECISION.**

### Potential Impacts to be assessed

Potential impacts that can arise from the proposed project include but are not limited to:

- Air Quality
- Noise impacts
- Visual impacts
- Water resource impacts
- Impact on archaeological and cultural features
- Biodiversity impacts
- Socio-economic

### Environmental Management Plan (EMP)

- All mitigations will be incorporated into the Environmental & Social Management Plan (ESMP).

### Questions / Discussion ?



www.eccenvironmental.com

**Thank You For Your Time!**



Contact Us:  
Tel: +264 81 669 7608  
[info@eccenvironmental.com](mailto:info@eccenvironmental.com)

[www.eccenvironmental.com](http://www.eccenvironmental.com) 33