

Background Information Document (BID)

Environmental Management Plan (EMP) for the Proposed Mineral Exploration Activities on Exclusive Prospecting License (EPL) No. 7030 located Near Dordabis, in the khomas Region

EAP: Excel Dynamic Solutions (Pty) Ltd

Proponent: Aloe Investment Two Hundred and Thirty Seven (Pty) Ltd

1 INTRODUCTION AND BACKGROUND

Aloe Investments Two Hundred and Thirty Seven (Pty) Ltd (The Proponent or Aloe Investments 237) is the owner of Exclusive Prospecting License (EPL) No. 7030. The Proponent has been granted an Environmental Clearance Certificate (ECC-00441) by the Ministry of Environment, Forestry & Tourism (MEFT), valid between 19 December, 2019 and 19 December, 2022. The Proponent seeks to apply for a renewal of the ECC, in order to continue with exploration works on the EPL. The 34122.5655 ha EPL is located about 80 km southwest of Windhoek, near Dordabis Settlement (**Figure 1**). The EPL is prospective to Base and Rare Metals, Industrial Minerals, and Precious Metals.

Exploration and all mining-related activities are among the listed activities that may not be undertaken without an Environmental Clearance Certificate (ECC) under the Environmental Management Act (EMA) (2007) and its 2012 Environmental Impact Assessment (EIA) Regulations. The relevant listed activities as per EIA regulations are:

- *3.1 The construction of facilities for any process or activities which requires a license, right of other forms of authorization, and the renewal of a license, right or other form of authorization, in terms of the Minerals (Prospecting and Mining Act, 1992).*
- *3.2 other forms of mining or extraction of any natural resources whether regulated by law or not.*
- *3.3 Resource extraction, manipulation, conservation and related activities.*

The Proponent is, therefore, required to renew their ECC, in order for the planned exploration works to continue on EPL 7030. To fulfill the legal requirements, the Proponent has appointed Excel Dynamic Solutions (Pty) Ltd (Environmental Consultants), to conduct the required compliance audit and Environmental Management Plan (EMP) update, and submit the ECC renewal application to the Department of Environmental Affairs and Forestry (DEAF) at the Ministry of Environment, Forestry & Tourism (MEFT).

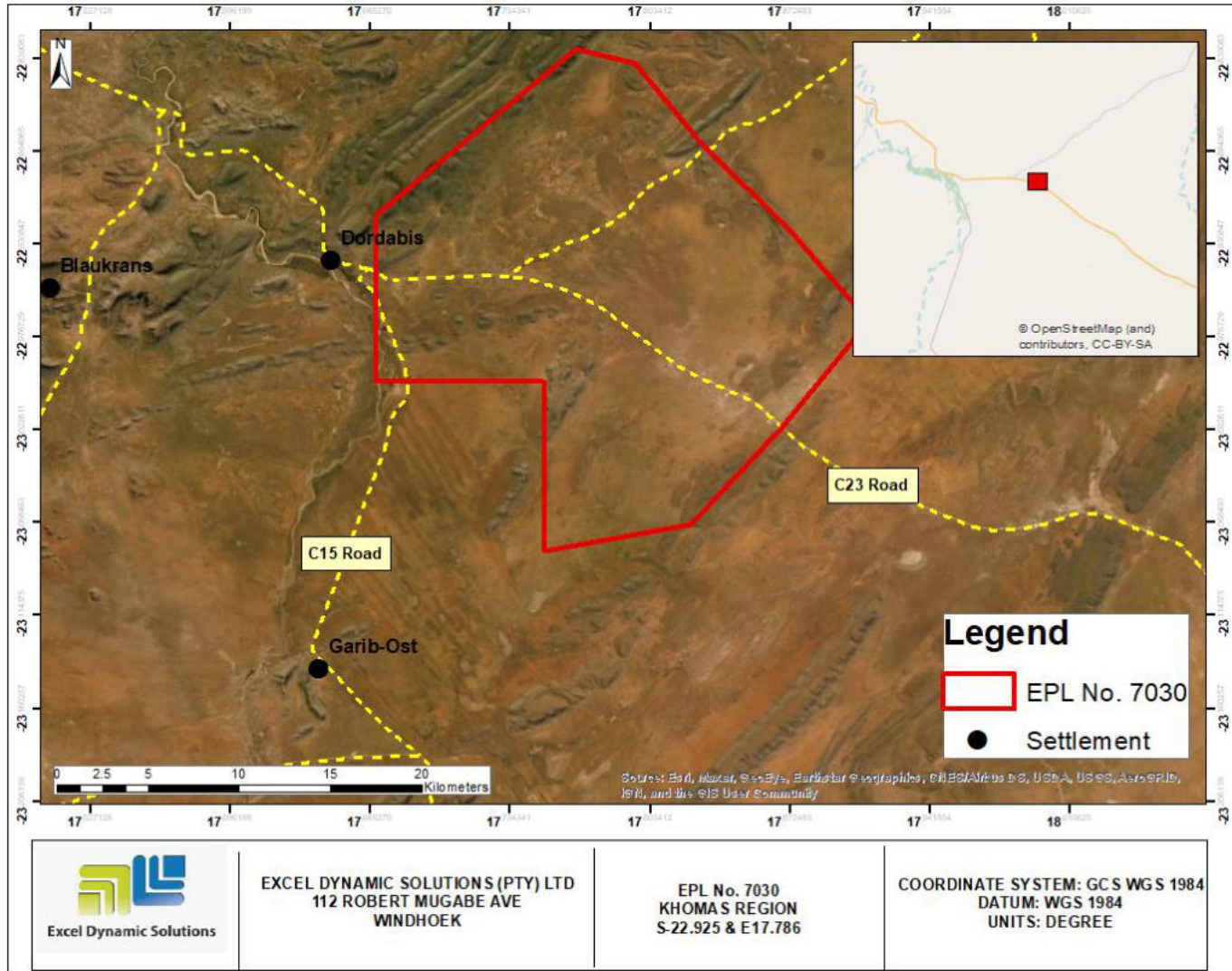


Figure 1: The locality of EPL 7030

2 PURPOSE OF THIS DOCUMENT

It should be noted that the Background Information Document (BID) is a non-technical summary of the EA (not an EA Report or EMP). The aim of the BID is to:

- Briefly introduce the proposed project and related activities to potential interested and affected parties (I&APs)/stakeholders, and afford them an opportunity to raise issues, concerns / submit comments about the proposed project.

Once the Proponent has been issued with the ECC Renewal and obtained all required permits such as consents and land use agreements, and is ready to resume the exploration activities, the planned activities commence.

3 PROJECT DESCRIPTION

The proposed activities entail prospecting and detailed exploration activities to delineate the mineral deposits on the EPL, in order to determine whether the deposit for the target commodities is economically feasible (to advance to the resources development and mining phase).

Prospecting and exploration of minerals are the first components of any potential mining project. They are carried out to acquire the necessary data required for further decision-making and investment options.

Exploration activities are anticipated to last for about three years or sometimes longer (depending on the various factors such as turnaround between exploration data analysis and availability of funds between project phases).

3.1 Project Activities

The proposed prospecting and exploration activities (methods) are divided into the following categories:

Phase 1: Non-invasive techniques (prospecting) – mapping / surveys.

Phase 2: Invasive techniques (detailed exploration) – soil sampling, trenching and exploration drilling.

Non-Invasive prospecting techniques have already been carried out on this EPL, but no invasive exploration techniques have been employed yet. Once the target areas have been selected and verified under the prospecting phase, detailed exploration works will follow.

3.2 Human Resources, Services, and infrastructure

The following services and infrastructure as provided below will be required for the project activities:

Human resources and accommodation: Around 10-15 people will be employed on-site during the exploration phase and will be accommodated in tented camps.

Fuel Supply (machinery and equipment): Diesel will be used for machinery and equipment and fuel generator.

Accessibility (roads): the EPL is accessible via the C15 and the C23 roads that pass through the EPL 7030.

Waste management:

Sewage: Mobile chemical ablution facilities will be provided on-site. The wastewater will be transported offsite for treatment at a facility.

Solid waste: Sufficient waste containers will be made available at exploration and camp sites for waste storage and disposal at a certified solid waste site.

Hazardous waste: The waste fuel/oils will be carefully stored in a standardized container for disposal at an approved hazardous waste management facility near the EPL site.

Health and Safety: Adequate and appropriate Personal Protective Equipment (PPE) will be provided to project personnel. A minimum of two first aid kits will be readily available onsite.

Potential Accidental Fire Outbreaks: Fire extinguishers will be readily available in vehicles, at the sites and campsite.

Project Equipment, Material, Machinery, and Vehicles: About two or three 4X4 vehicles, drilling supporting truck, excavator / front-end loader, dozer, air compressor, drilling fluids stored in manufacturers approved containers, and a generator for power supply.

Upon completion of exploration works, the disturbed sites will be rehabilitated as far as practically possible. This will include backfilling of exploration trenches, boreholes, levelling of stockpiled topsoil and cleaning of site areas.

4 ENVIRONMENTAL ASSESSMENT

This EA process is conducted in accordance with the provisions stated in the EMA No 7 of 2007 and its 2012 EIA Regulations. The primary objective of the EA is to identify potential negative impacts associated with the project and assess them. Practical and effective mitigation measures will be recommended for implementation.

The main objectives of this EA are to:

- Revise the previous EA documents according to the works completed on the site
- Identify any further potential impacts associated with the proposed activity.

- Carry out a compliance audit as according to the project EMP
- Compile an updated EMP addressing all identified issues and potential impacts.

4.1 Potential Impacts

The following potential impacts have been identified:

4.1.1 Positive:

- Socio-economic development: employment creation and skills transfer.
- Investment opportunities/infrastructure-related development benefits,
- Produce a trained workforce and small businesses that can service communities.
- Boosting the local economic and regional economic development.
- Increased support for local businesses through the procurement of locally available goods and services.

4.1.2 Adverse (Negative) Impacts:

- Impacts on Biodiversity and Land (Clearing of Vegetation, Alien Invasive Plants, Wildlife and Livestock, Birds, Fire)
- Impact on Water Resources
- Generation of dust
- Generation of waste
- Visual impacts (scars) on landscape,
- Potential Impact on Surrounding Soils
- Vibrations and noise from exploration works
- Possible disturbance to heritage/archaeological resources
- Potential occupational health and safety risks,
- Vehicular traffic safety
- Impacts associate with closure and decommissioning of exploration works

Contact: Ms. Rose Mtuleni

Environmental Assessment Practitioner

Aloe Investments 237 (Pty) Ltd

BID: EPL 7030

Tel: +264 (0) 61 259 530

Email: public@edsnamibia.com / rosem@edsnamibia.com