

Locality Map: Proposed Exploration activities on EPL 8388 and 8389, Khomas Region

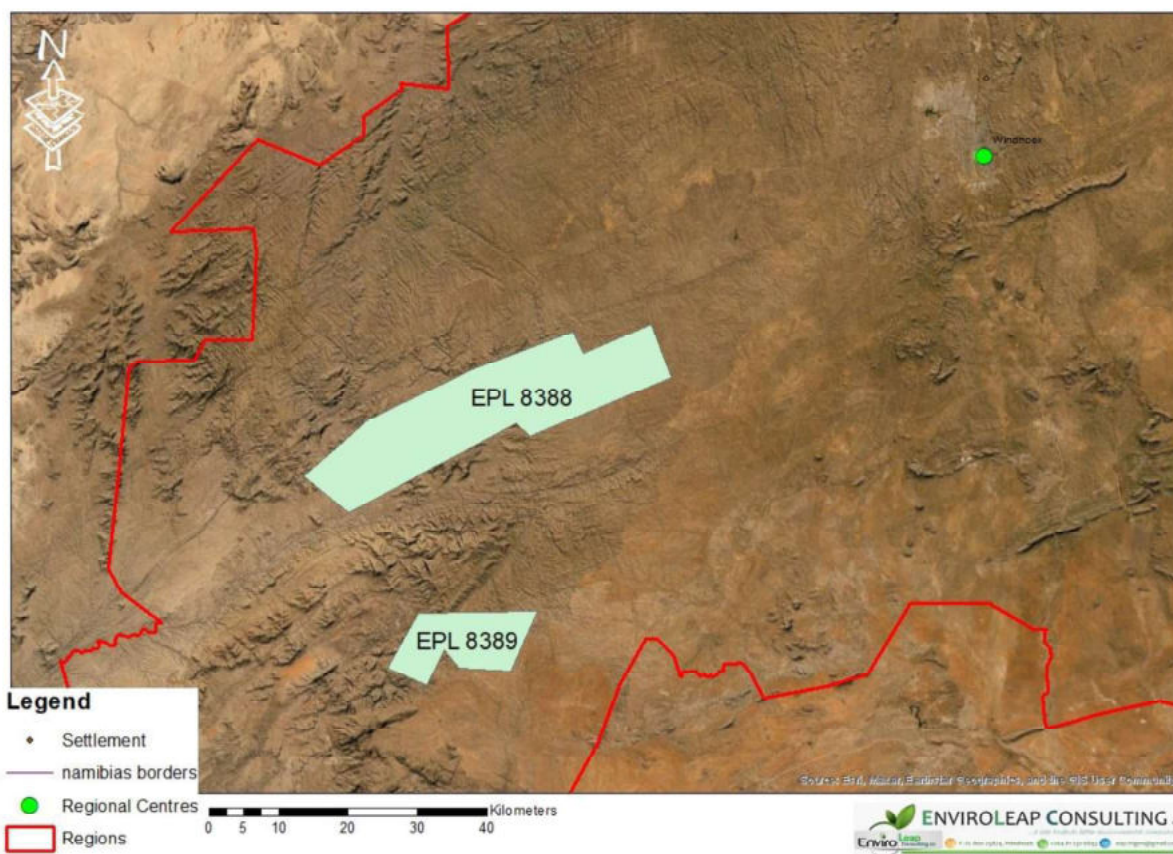


Figure 5: Location of the proposed exclusive prospecting licenses (EPLs 8388 & 8389) in the Khomas Regions

Table 3: Corner coordinates of the proposed development site

Corner point	Latitude	Longitude
A – EPL 8388 Conner Point 1	-23.059103°	16.205545°
B – EPL 8388 Conner Point 2	-23.012625°	16.142632°
C – EPL 8388 Conner Point 3	-22.873287°	16.657393°
D – EPL 8388 Conner Point 4	-22.805971°	16.630172°
E – EPL 8389 Conner Point 1	-23.182913°	16.470454°
F – EPL 8389 Conner Point 2	-23.261750°	16.436860°
G – EPL 8389 Conner Point 3	-23.188525°	16.303861°
H – EPL 8389 Conner Point 4	-23.263268°	16.257275°

Table 4: List of Former Commercial farms included within the boundaries of EPLs

No.	Farm Name	No.	Farm Name
1	Farm Valencia	12	Farm Koam
2	Farm Weisenfels	13	Farm Kiamsab
3	Farm Hohenheim	14	Farm Okasume
4	Farm Portsmut	15	Farm Mato
5	Farm Groot Hakos	16	Farm Ammans
6	Farm Nomtsas	17	Farm Wasserfall
7	Farm Natas	18	Farms Groot Wasservallie and Wasservallie
8	Farm Usambara	19	Farm Sesskoppie
9	Farm Us	20	Farm Luvahole
10	Farm Zeotvereden	21	Farm Simmenau
11	Farm Westende	22	Farm Jonkergrap

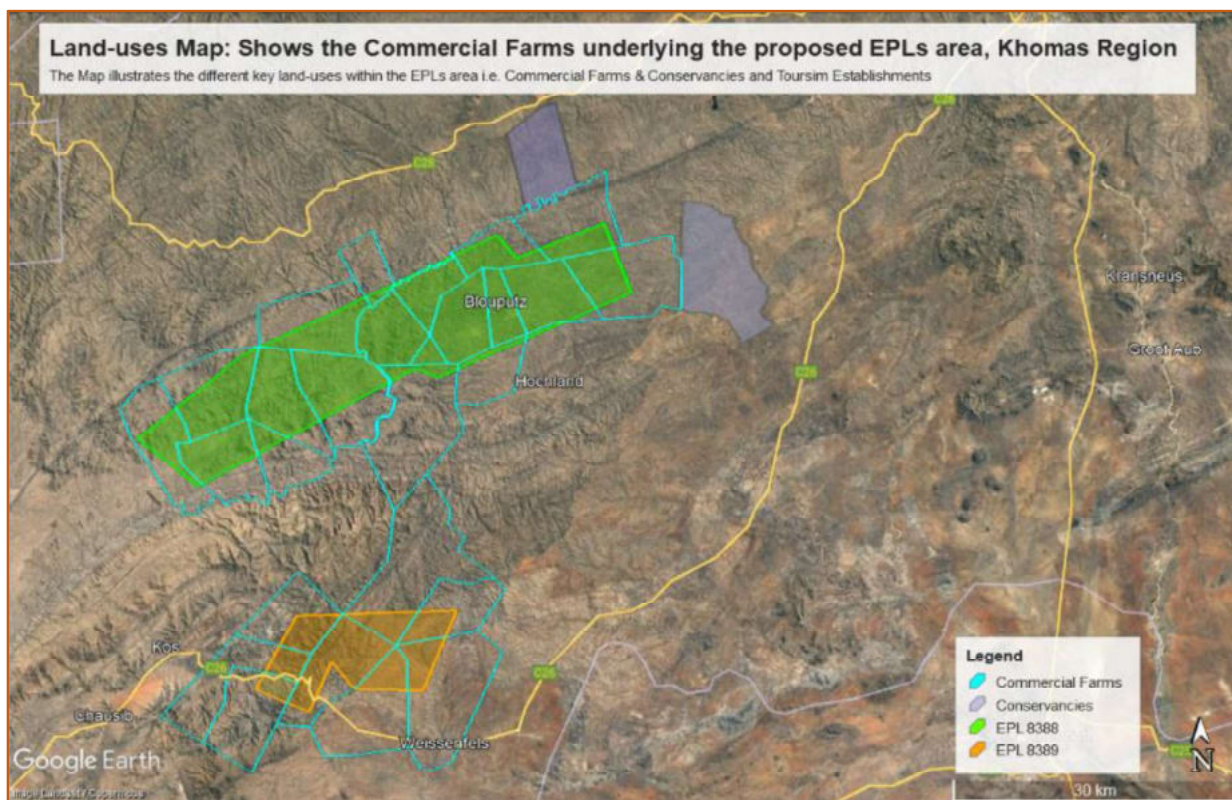


Figure 6: Locality map showing commercial farms underlying the two proposed EPLs area

2.4. SUPPORTING INFRASTRUCTURE

2.4.1 Basecamp

Given the location of the mining claims and that it is situated in a region with high tourism activity, an entirely new base-camp is not primarily recommended but rather an existing and suitably situated lodging facility must be utilised for the duration of the exploration activity. Otherwise, a suitable site must be identified in collaboration with all relevant authorities including the property (farm) owner. Where practical and possible, it is strictly recommended that for unskilled labour, local community members are employed and thus accommodated at their existing homestead to mitigate and reduce potential conflict with the conservancy wildlife and livestock management protocols.

During the prospecting period, it is anticipated that about 5 – 10 persons will be employed, although only four staff are allowed to lodge on-site on an alternating (rotating) basis. The project specialists such as geologists, field assistants, geo-technicians and sampling crew, will be hosted on either a daily or special visit basis, and thus might not all be on-site simultaneously.

Therefore, it is highly recommended that temporary ablution facilities must be provided and limited to within the existing base-camp footprint pre-identified national park campsites, and the necessary authorization must be obtained prior to installation of any such facility.

2.4.2 Water supply

Water will be required for diamond-core drilling and for dust suppression. Water can be supplied through existing farm boreholes (with the permission of the land owners) and or if