



Seagull Fish Processors

P.O.Box 3824

Walvis Bay

Ben Amathila Avenue

Ministry of Environment, Forestry & Tourism

Office of the Environmental Commissioner

Private Bag 13306

Windhoek

**ATT:** Mr. Timoteus Mufeti

**RENEWAL OF ENVIRONMENTAL CLEARANCE CERTIFICATE FOR SEAGULL FISH PROCESSORS (PTY) LTD**

Seagull Fish Processors would wish to formally request for a renewal of our Environmental clearance certificate from the Ministry of Environment, Forestry and Tourism.

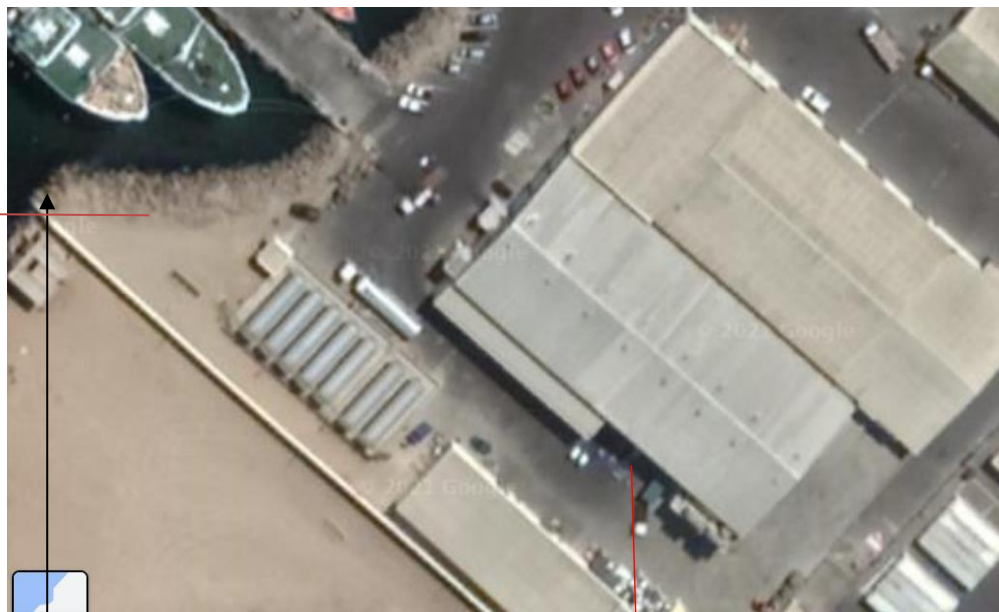
Seagull Fish Processors is a Namibian fishing company located in Walvis Bay. It is situated near the ocean on the erf of Merlus Group of Companies (Merlus Seafood and Merlus Management). Its next-door neighbors are Etosha Fishing and Pereira Fishing.

We have attached our EMP (Environmental Management Plan) and EPR (Environmental Performance Report). Also attached copies of our current ECC which was amended from Abroma Fishing Industries to Seagull Fish Processors which also includes the abstraction of seawater.

**How the Effluent treatment plant Works currently.**

Effluent from the factory flows into the sump. An automated sump pump transfers the effluent from the sump onto the wedge wire screen. The wedge wire screen filters the effluent and removes fish scales, fish pieces, plastic pieces and other solids larger than 1.1mm. Effluent passing through the screen flows over to the ice melting tank where it mixes with the factory ice. The ice melting tank fulfills two functions. Firstly, screened effluent from the factory mixes with the factory ice and melts it. Secondly, it functions as an addition settling tank. The factory ice often contains fish pieces, cleaning chemicals, oil and other solids. Due to the slow velocity in the ice melting tank, heavy particles will settle to the bottom as suspended solids and light particles will float to the surface as floaters. The suspended solids can be drained off through the bottom valve back into the sump. Floaters can be racked off. Treated effluent will leave the ice melting tank as middle phase through the overflow chamber of the ice melting tank and is discarded to the sea. However, the effluent water is sampled at the sump and tested on a monthly basis to determine the quality of the effluent. The solid waste trapped by the wedge wire screen together with fish off cuts are collected in the skips. Fish waste is separated from plastics and fish waste is taken to the fishmeal plant.

The geographical location is latitude – 22.93754°S & longitude 14.50957°E



**SUMP:** collection point where the effluent is pumped continuously.

**Out flow pipe:** effluent water pumped from the sump into the sea.

**Pump:** location of where the pump for abstracting seawater is built.

**Factory Effluent sump**



**Pump to be used in abstracting seawater**





Yours sincerely

Jacques Seibeb

SHE OFFICER